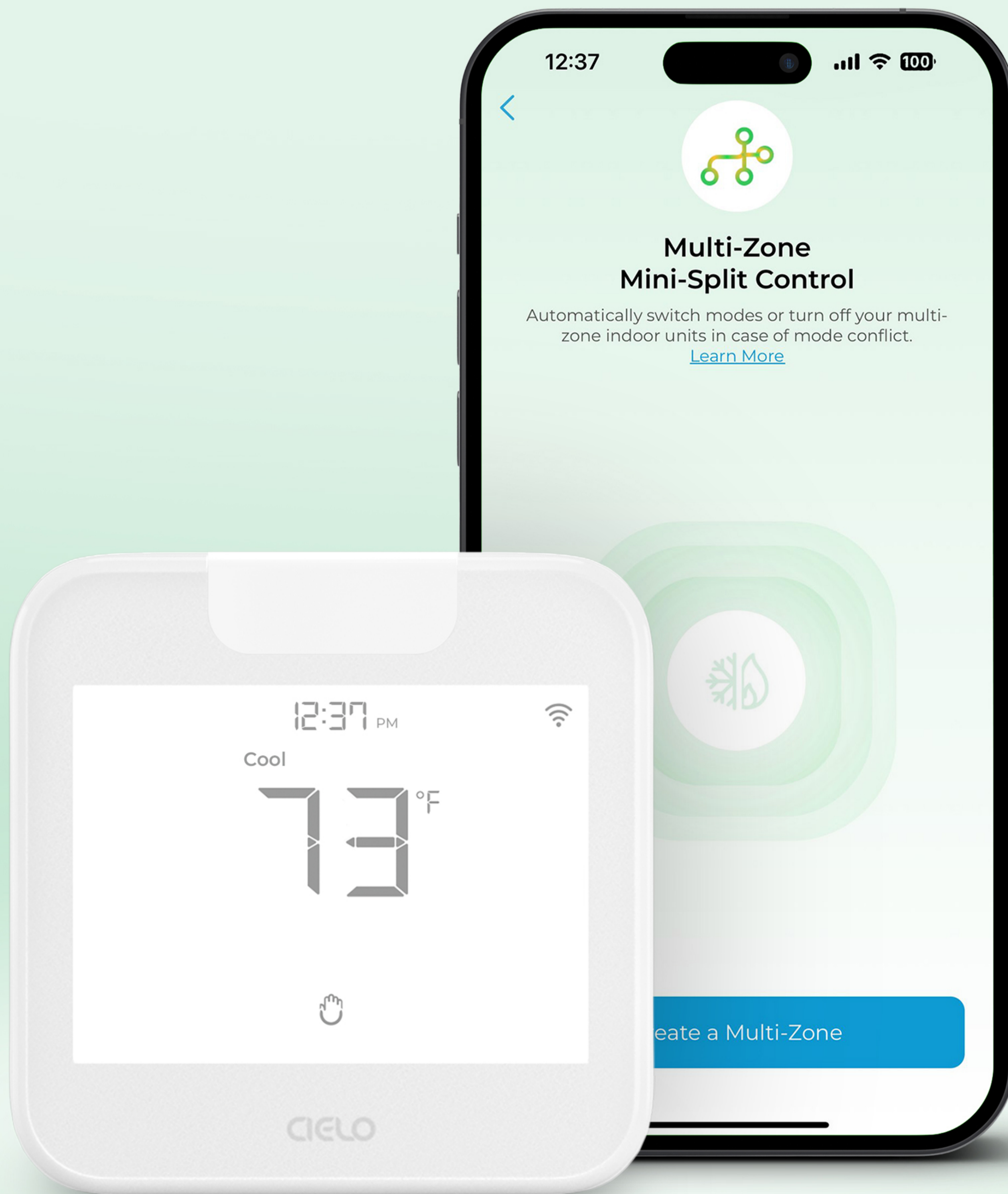


# Multi-Zone Mini-Split Control

Avoid Mode Conflict With  
Cielo Breez Max



# Cielo Breez Max

The Perfect Solution to Avoid Mode Conflict in Multi-Zone Mini-Splits

Multi-zone mini-split system, which consists of one outdoor unit and multiple indoor units, can only operate in either heating or cooling mode at any given time. This limitation often leads to mode conflict when one indoor unit is switched to heat mode while others are operating in cool mode or vice versa.

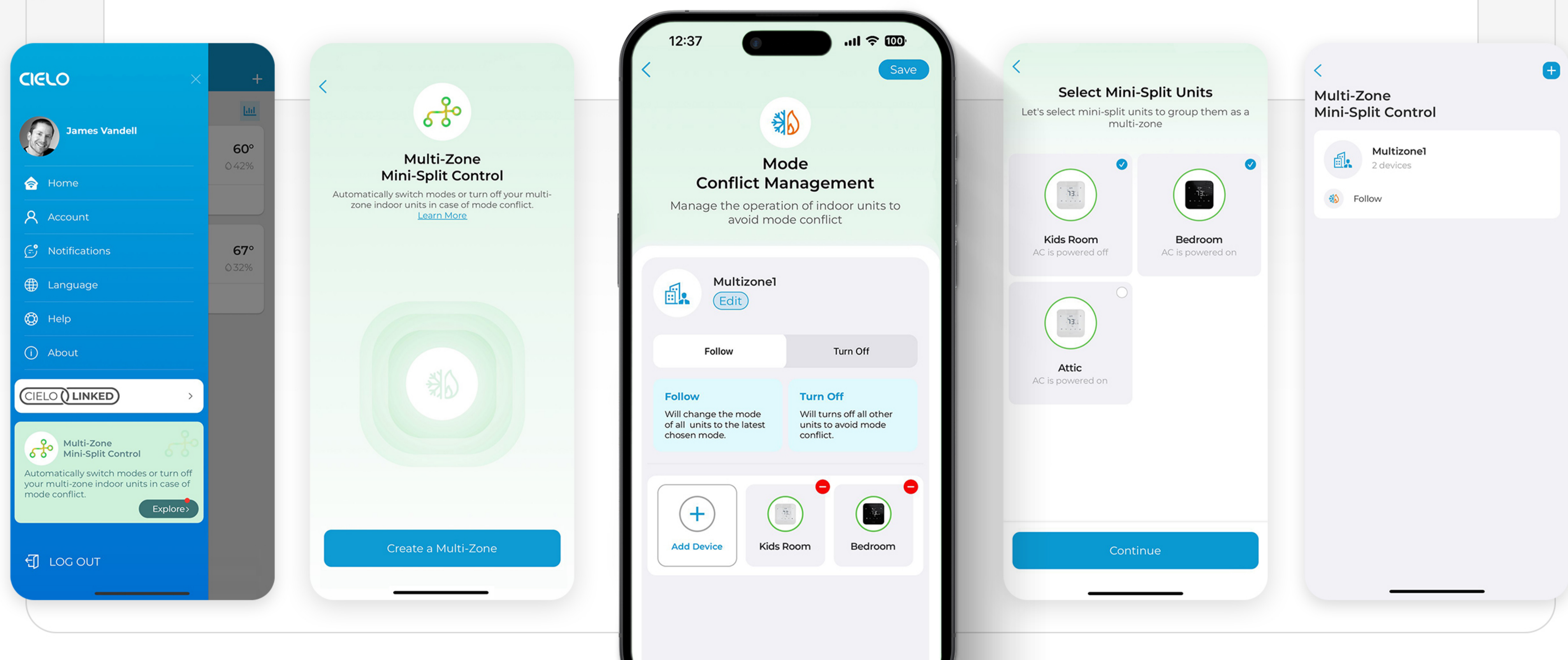
Cielo Breez Max offers a unique feature to avoid mode conflict and ensure uninterrupted operation of a multi-zone mini-split system. You'll need to connect each indoor unit with a Cielo Breez Max.

To avoid mode conflict, this feature offers two key functionalities to either:

- ✔ **Follow:** This enables mode synchronization across all units, meaning that if one unit is switched to heat mode while others are cooling or vice versa, all the units will switch to the latest chosen mode.
- ✔ **Turn Off:** If one unit is switched from heating to cooling or vice versa, the remaining units will automatically turn off to avoid mode conflict.

Multi-Zone Mini-Split Control Using Breez Max Ensures:

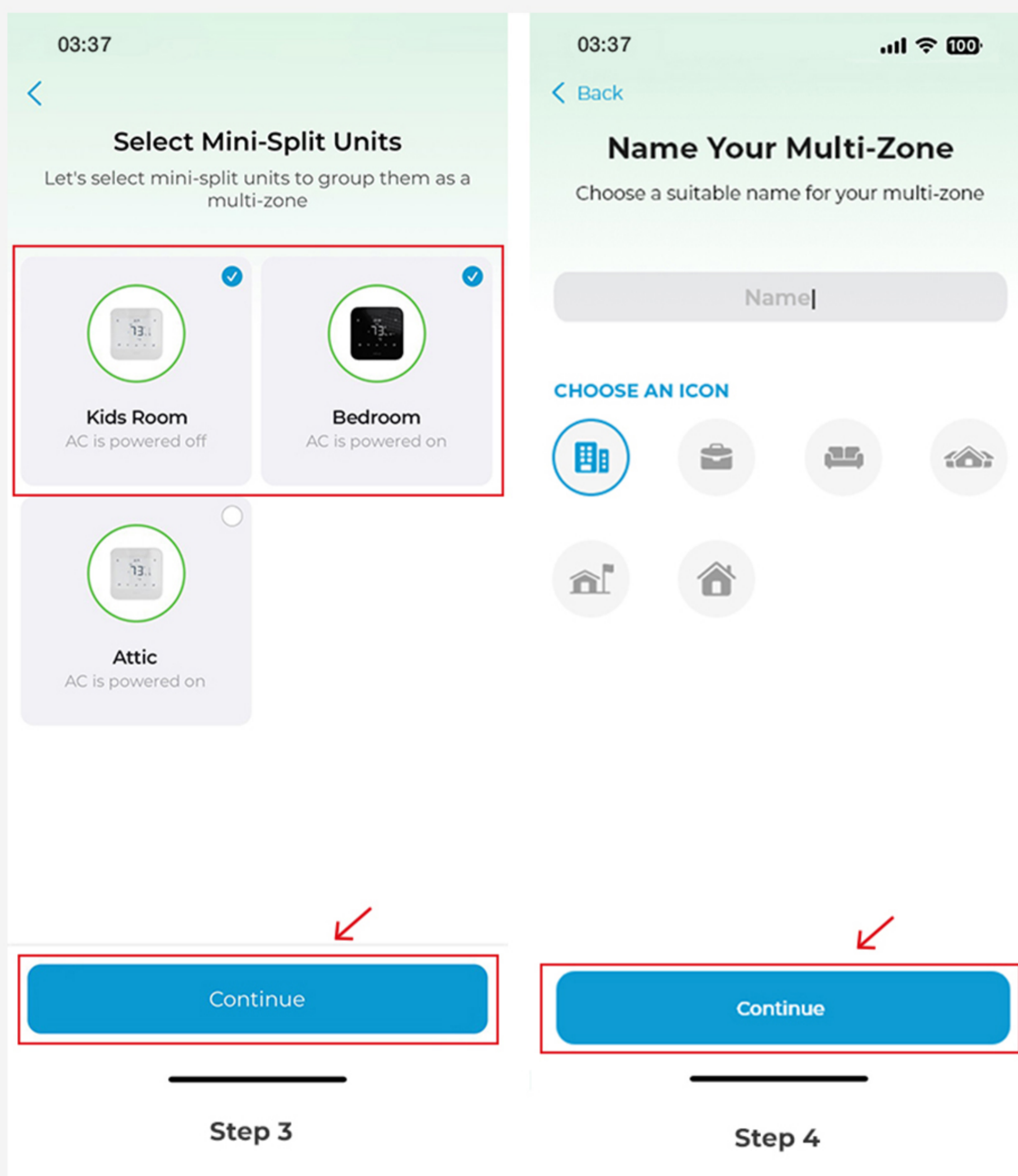
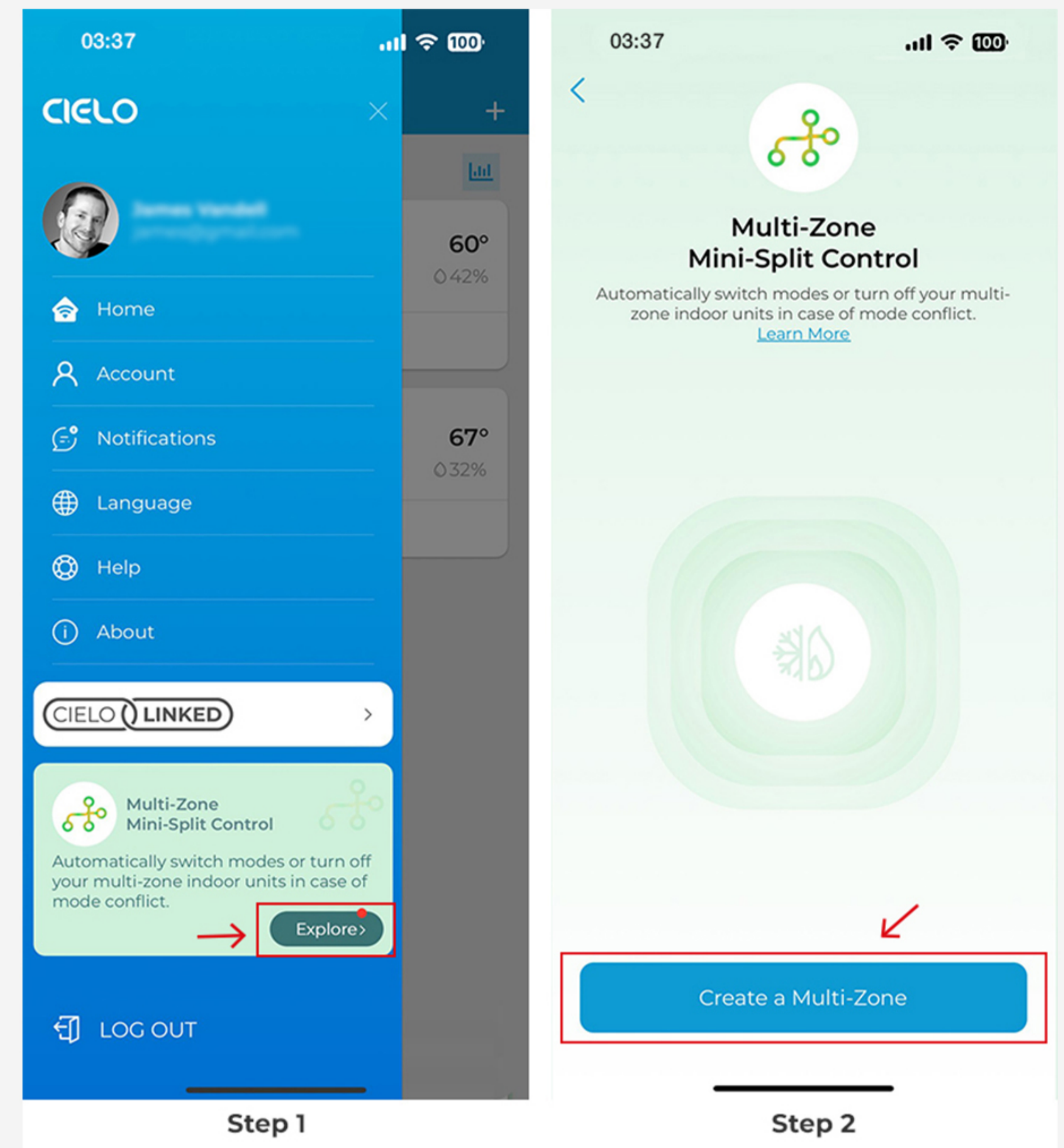
- ✔ **Smooth Operation:** Breez Max avoids mode conflict, ensuring your system operates seamlessly without interruptions.
- ✔ **Enhanced Comfort and Convenience:** By avoiding mode conflict, Breez Max guarantees consistent comfort and makes managing your multi-zone mini-split simpler and more convenient.



# How to set up Multi-Zone Mini-Split Control using the Cielo Home App

**Step 1:** Open 'Menu' from the Home screen and tap on 'Explore' under the Multi-Zone Mini-Split Control.

**Step 2:** Tap on 'Create a Multi-Zone'.



**Step 3:** Select the mini-splits that you want to group as a multi-zone. Tap on 'Continue'.

**Step 4:** Choose a name for your multi-zone. Also, select a suitable icon. Tap on 'Continue'.

**Step 5:** Select from the two options; 'Follow' or 'Turn Off'. Tap on 'Save'.

Your multi-zone mini-split control will be activated.

