

Cielo Breez Edge

Detailed User Manual

Breez Edge Control Screen



Mode:

Indicates the current mode of the mini-split, window, or portable unit. Tap on the mode icon to select the preferred mode.

Indoor Humidity

Displays current humidity level in the room.

Menu

Allows to set schedules, activate Comfy Max, adjust device preferences, and much more.

Indoor Temperature

Displays the current room temperature.

Setpoint

Desired temperature the AC aims to achieve.

Weather

Shows the current weather and weekly forecast.

Note: In case of an internet outage, Breez Edge saves 72 hours of weather data to keep making weather-based decisions, ensuring uninterrupted home comfort.

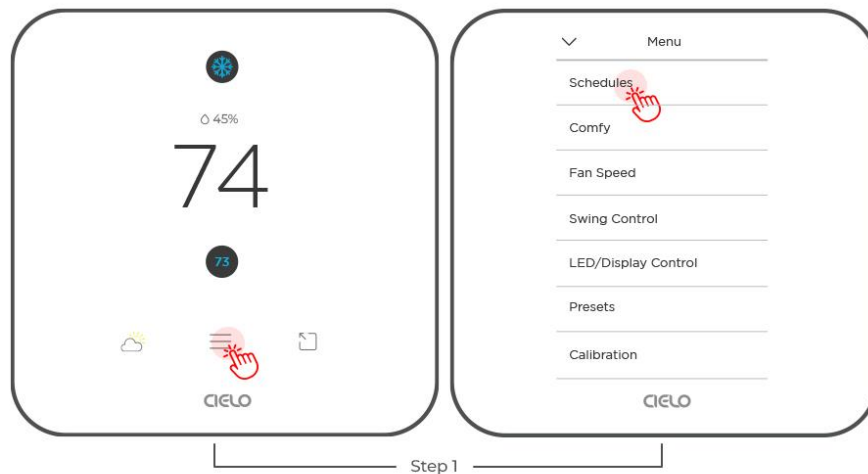
Presets

Gives quick access to Presets - Home, Away, Pets, and Sleep.

Setting Up Schedules for Your Heating & Cooling

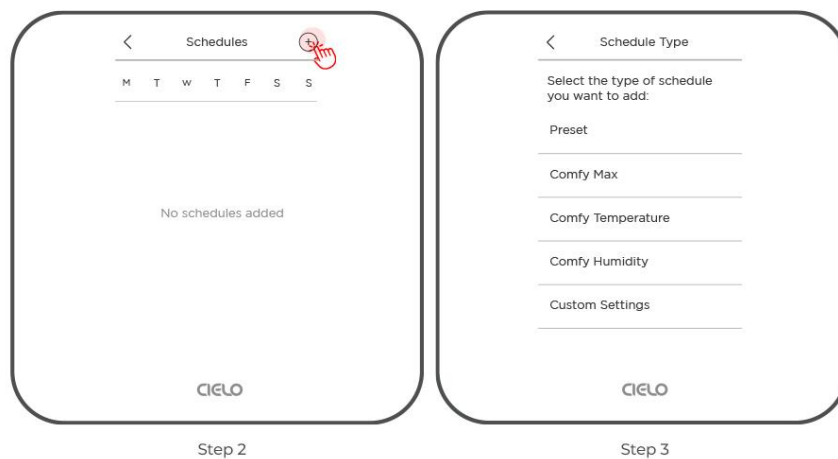
Cielo Breez Edge lets you set cooling/heating schedules, allowing you to enjoy a true smart home experience and maximize your energy savings.

Step 1: Go to 'Menu' and select 'Schedules'.



Step 2: Tap on the '+' sign at the top right corner of the screen.

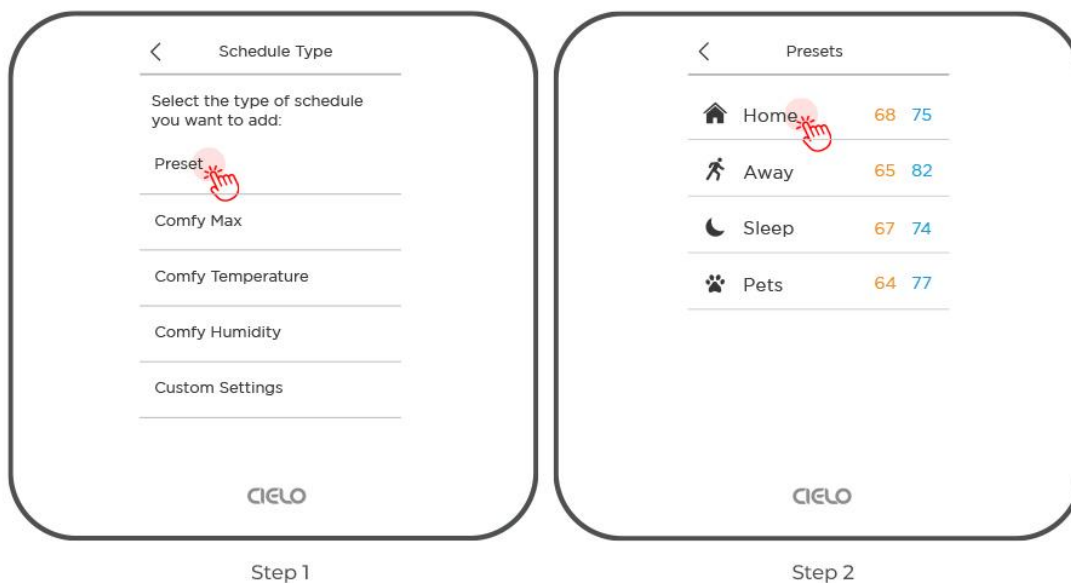
Step 3: You can choose from various schedules like Preset, Comfy Max, Comfy Temperature, Comfy Humidity, and Custom Schedule.



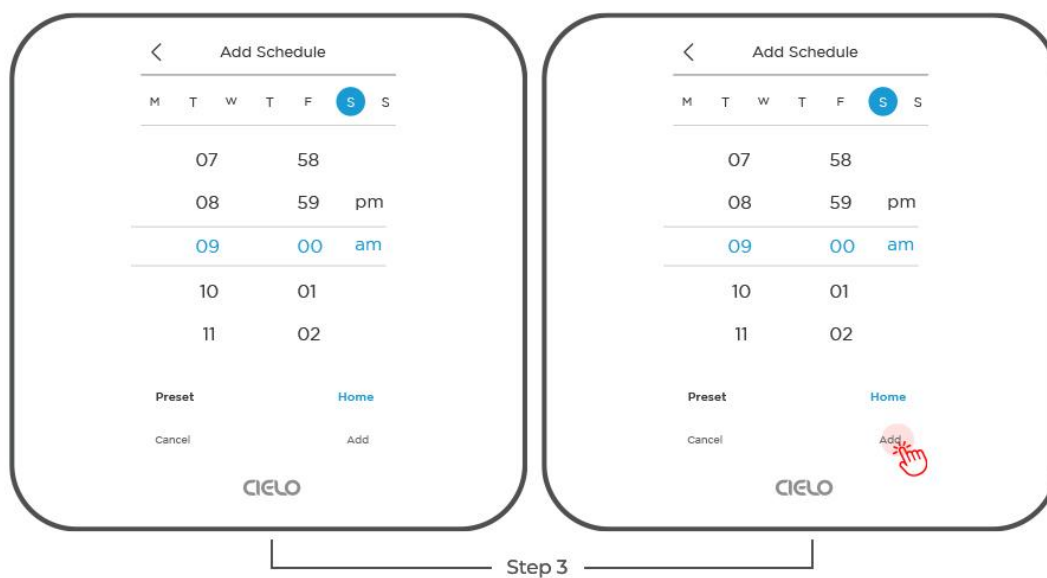
Scheduling a Preset

Step 1: Tap on the 'Preset'.

Step 2: Tap on the 'Preset' you want to add to your schedule.



Step 3: Select the time and day(s) on which you want the schedule to run. Tap on 'Add'.



Your schedule is now saved.

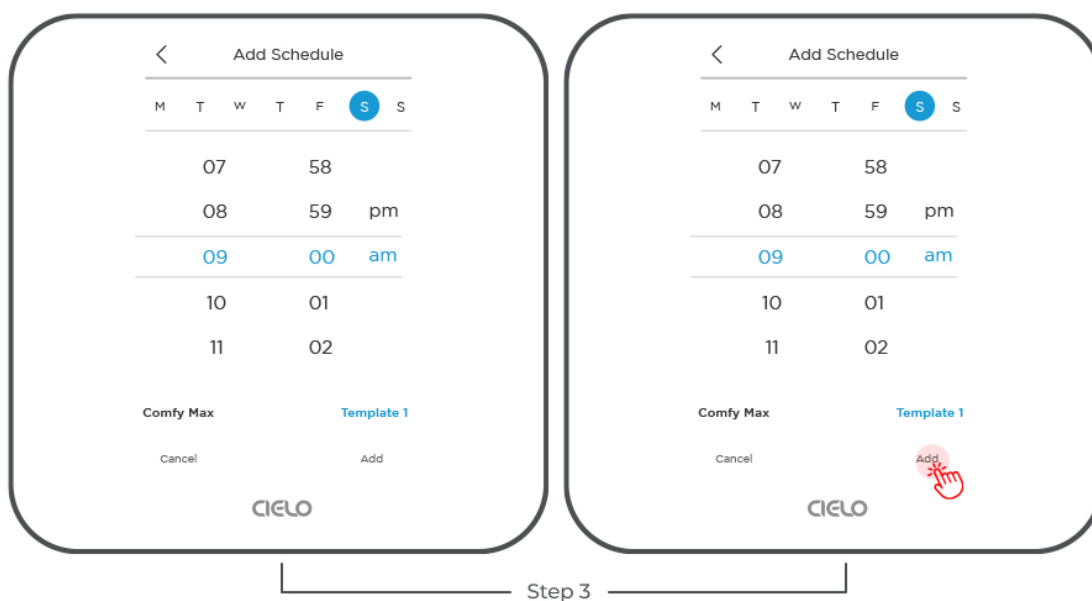
Scheduling Comfy Max

Step 1: Tap on the 'Comfy Max Schedule'.

Step 2: Select your desired Comfy Max template.



Step 3: Select the time and day(s). Tap on 'Add'.

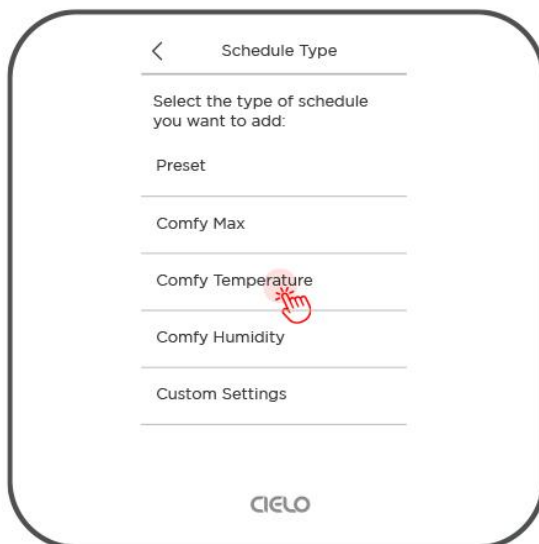


Your schedule is now saved.

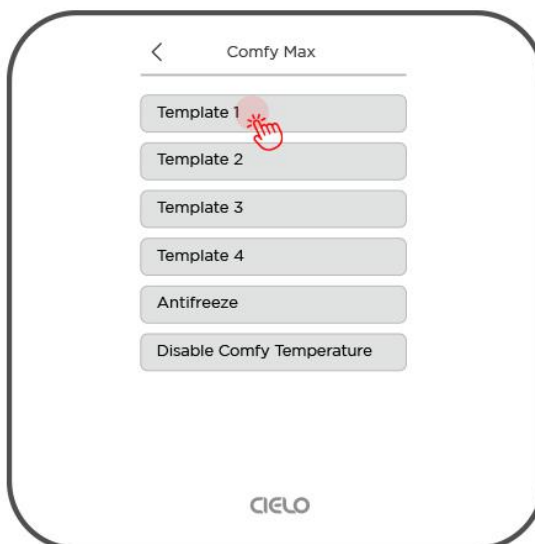
Scheduling Comfy Temperature

Step 1: Tap on the 'Comfy Temperature'.

Step 2: Select your desired Comfy Temperature template.



Step 1



Step 2

Step 3: Select the time and day(s). Tap on 'Add'.



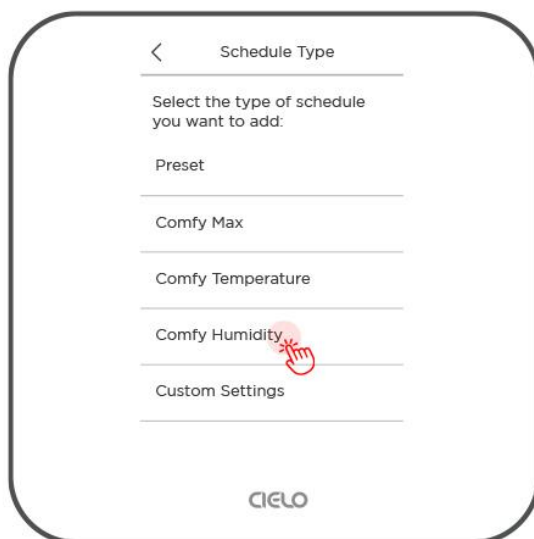
Step 3

Your schedule is now saved.

Scheduling Comfy Humidity

Step 1: Tap on the 'Comfy Humidity'.

Step 2: Select your desired Comfy Humidity template.

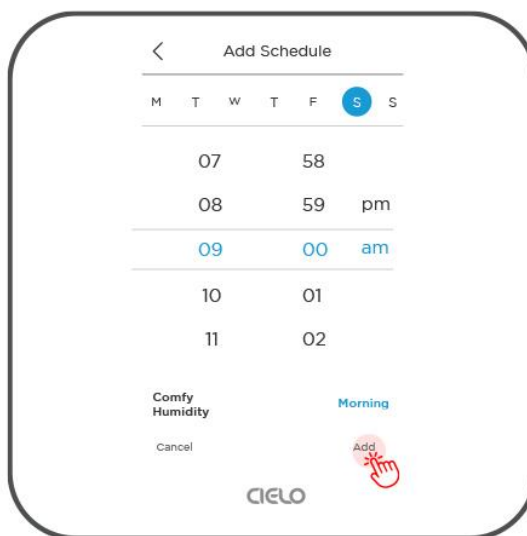


Step 1



Step 2

Step 3: Select the time and day(s). Tap on 'Add'.



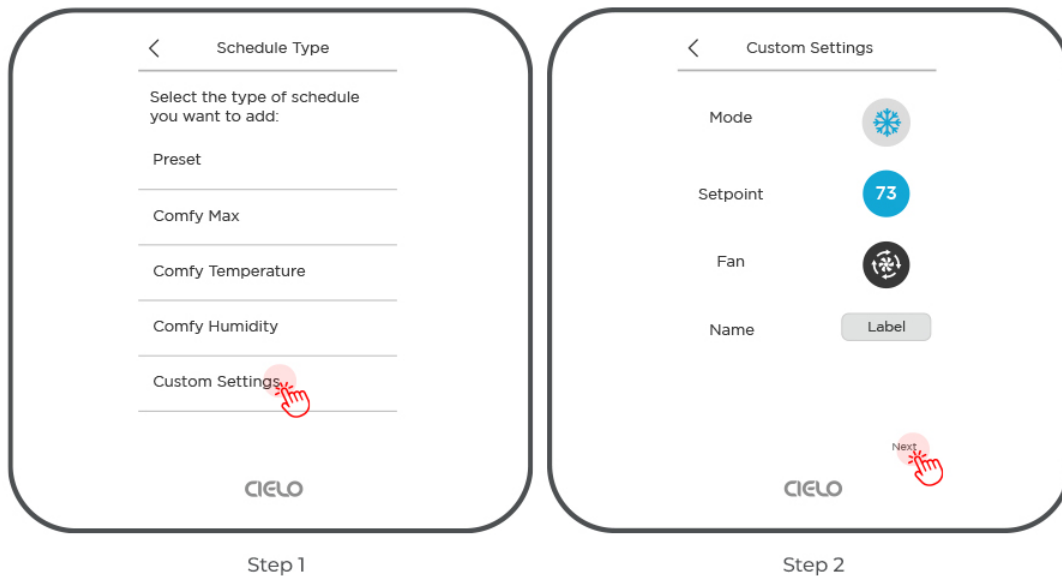
Step 3

Your schedule is now saved.

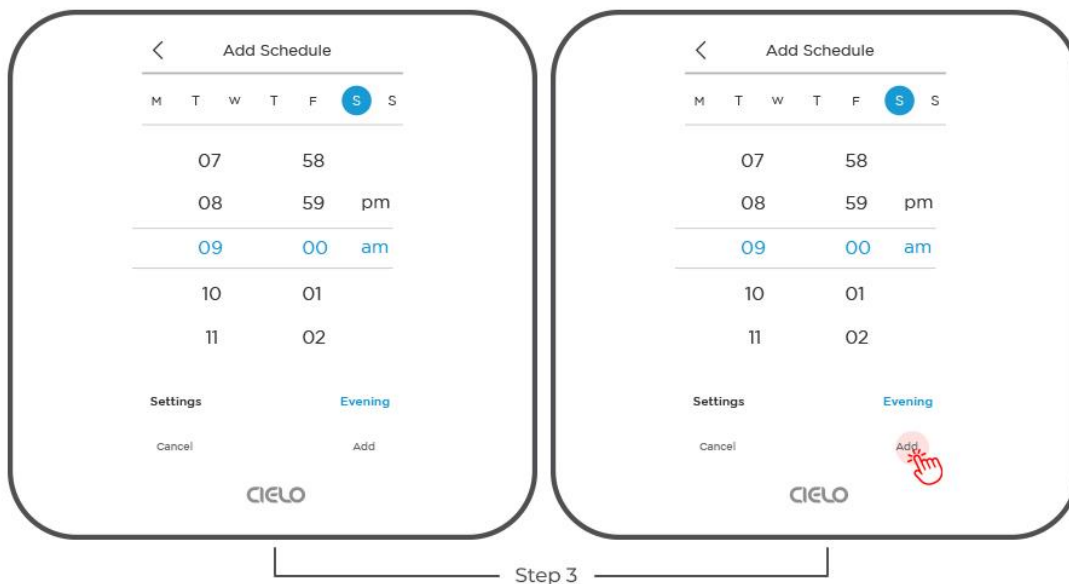
Custom Schedule

Step 1: Tap on the 'Custom Settings'.

Step 2: Choose your desired mode, setpoint, and fan speed by tapping on the icons. Label your schedule. Tap 'Next'.



Step 3: Select the time and day(s). Tap on 'Add'.

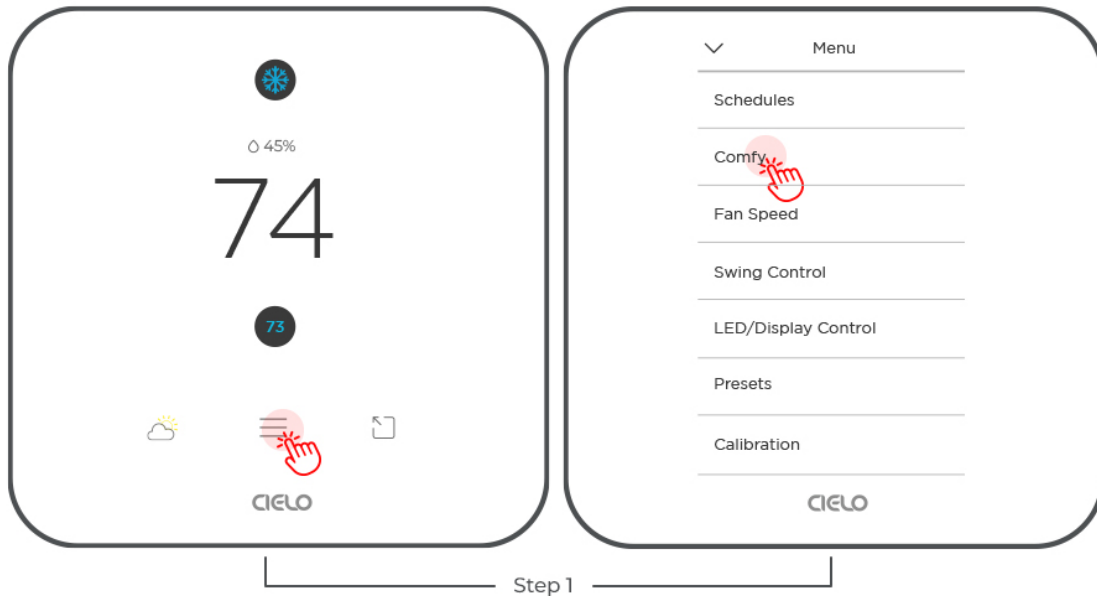


Your schedule is now saved.

Setting up Comfy Max

Comfy Max transforms your Breez Edge into a true smart thermostat for your mini-split. It enables your mini-split to work in a configurable and intelligent mode. It prevents overheating/overcooling while maintaining your desired comfort settings at all times.

Step 1: Go to 'Menu' and select 'Comfy'.



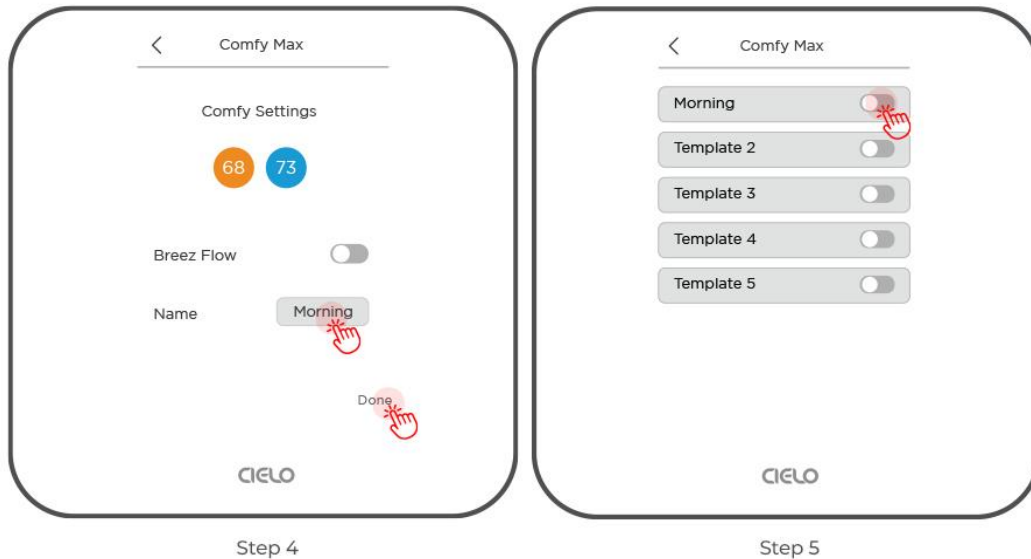
Step 2: Tap on the 'Comfy Max'.

Step 3: Tap on a template.



Step 4: Choose your preferred temperature, and select whether you want the fan (Breez Flow) to run after your desired cooling temperature is reached. Add a name for this template and tap on 'Done'.

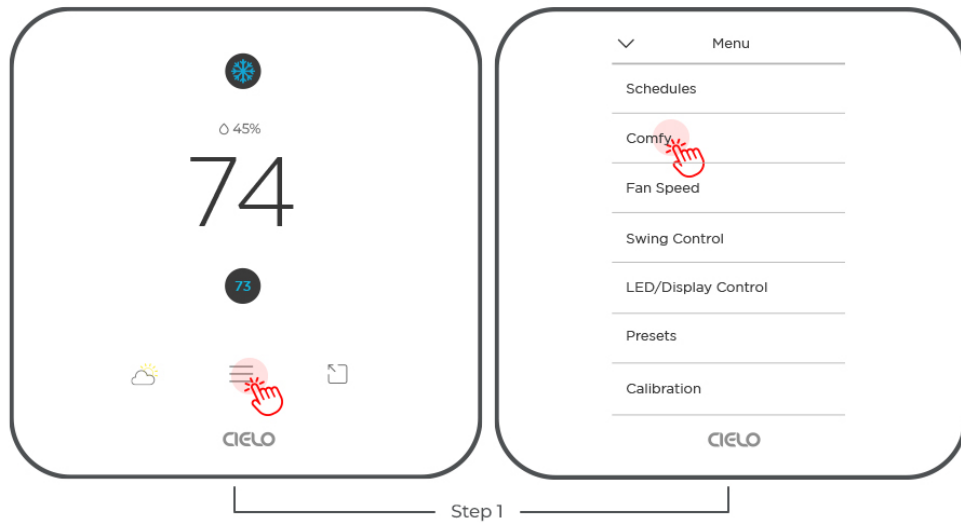
Step 5: Your Comfy Max settings are now saved. It is disabled by default. You can turn Comfy Max 'On' from the toggle next to the name of the Comfy Max template.



Setting up Comfy Temperature

Comfy mode helps prevent temperature extremes by maintaining your desired settings based on your defined setpoints.

Step 1: Go to 'Menu' and select 'Comfy'.

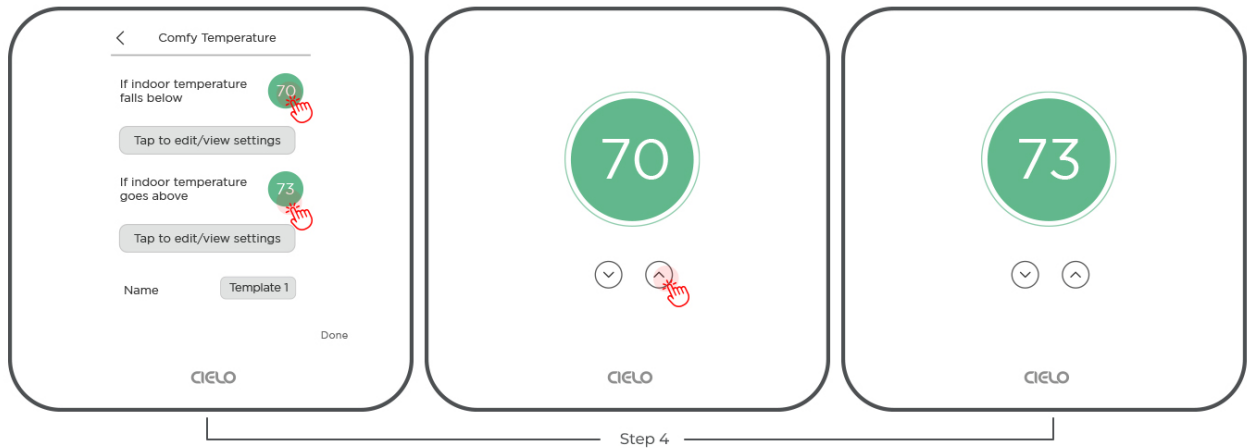


Step 2: Tap on the 'Comfy Temperature'.

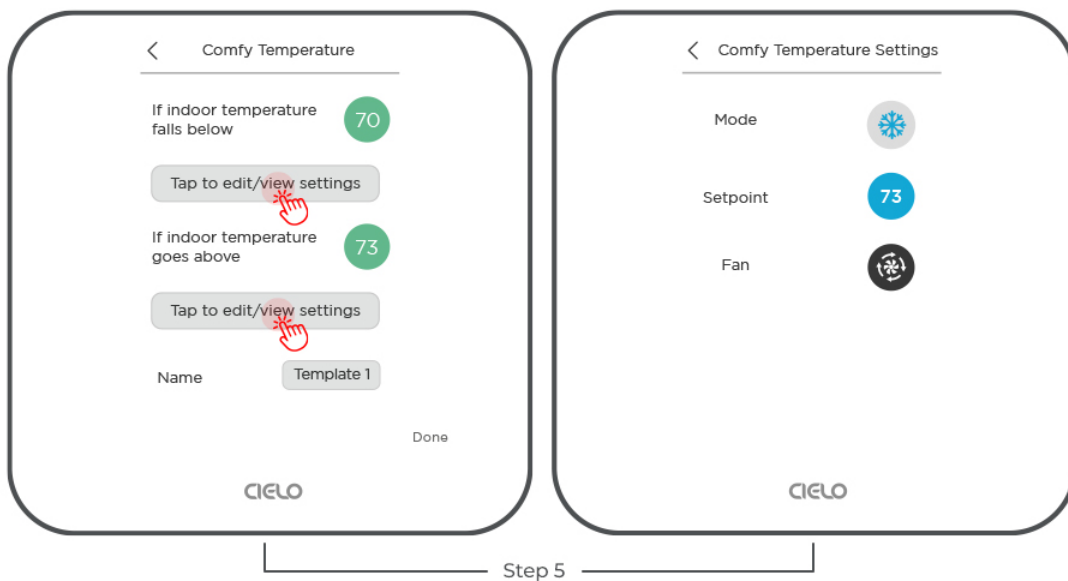
Step 3: Tap on a template.



Step 4: Choose your upper and lower temperature range.

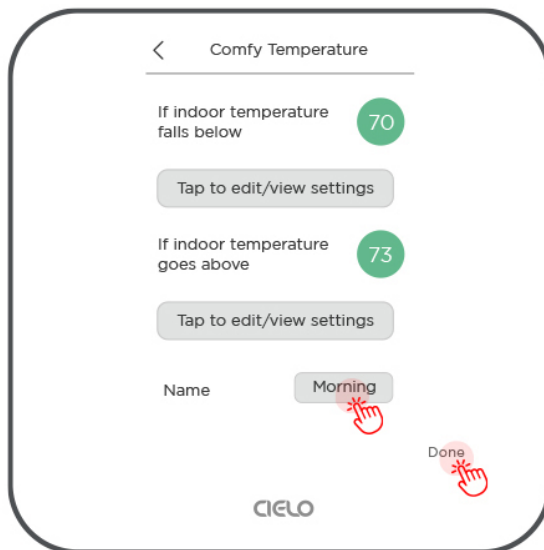


Step 5: Tap on 'Edit/View settings' to select what actions to perform if the temperature falls below or goes above the set range, e.g., changing its mode, temperature, and fan speed to help it get back into the preferred temperature range.

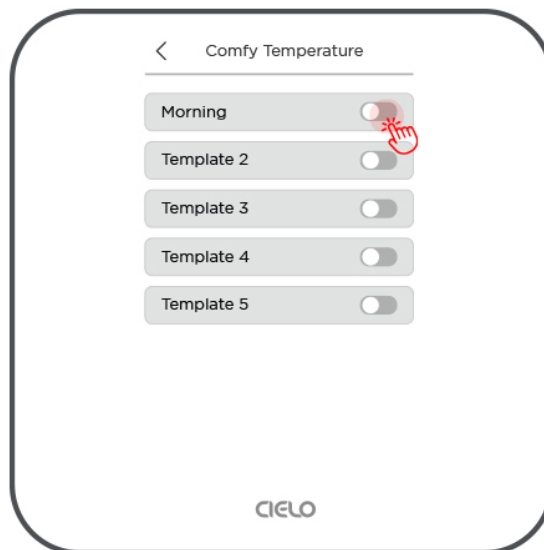


Step 6: Add a name for this template and tap on 'Done'.

Step 7: Your Comfy settings are now saved. It is disabled by default. You can turn Comfy Temperature 'On' from the toggle next to the name of the Comfy template.



Step 6

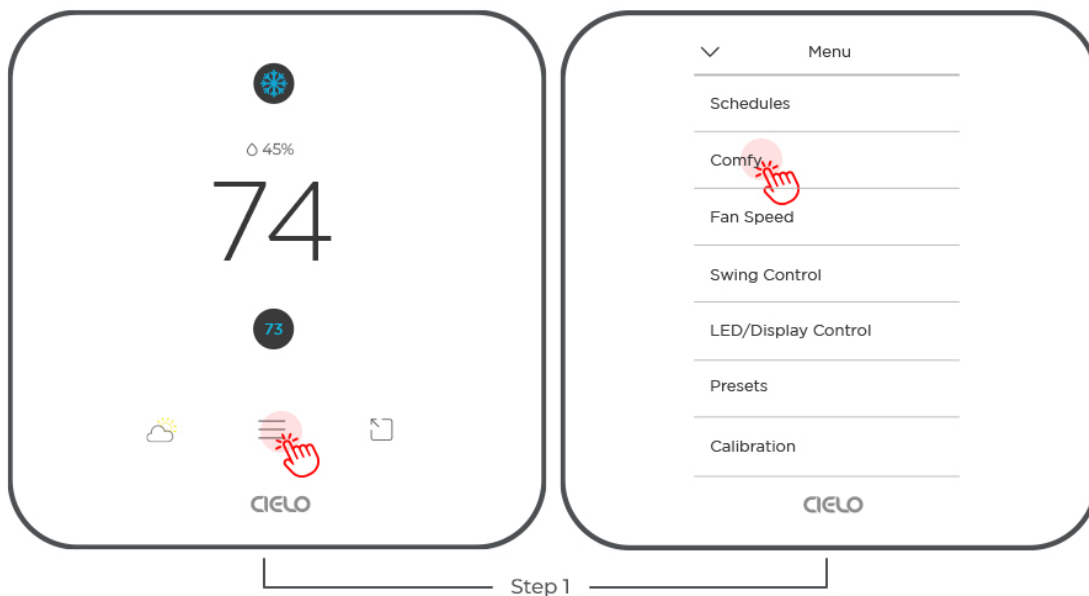


Step 7

Setting up Comfy Humidity

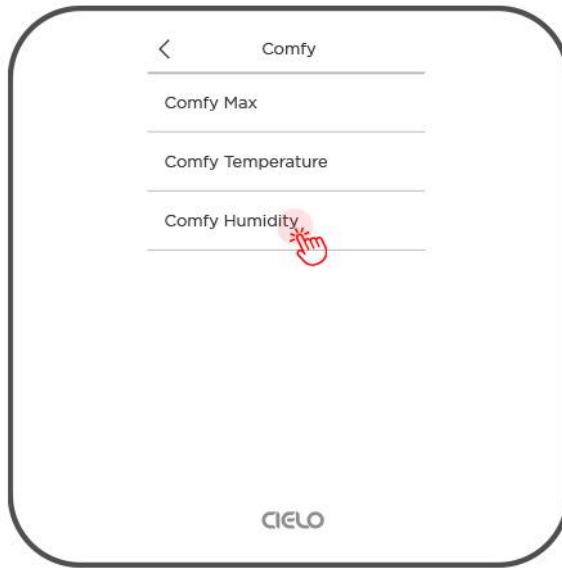
Comfy Humidity automatically changes your settings if the room humidity goes above or falls below a pre-set value, helping to maintain your ideal humidity levels.

Step 1: Go to 'Menu' and select 'Comfy'.



Step 2: Tap on the 'Comfy Humidity'.

Step 3: Tap on the template.



Step 2



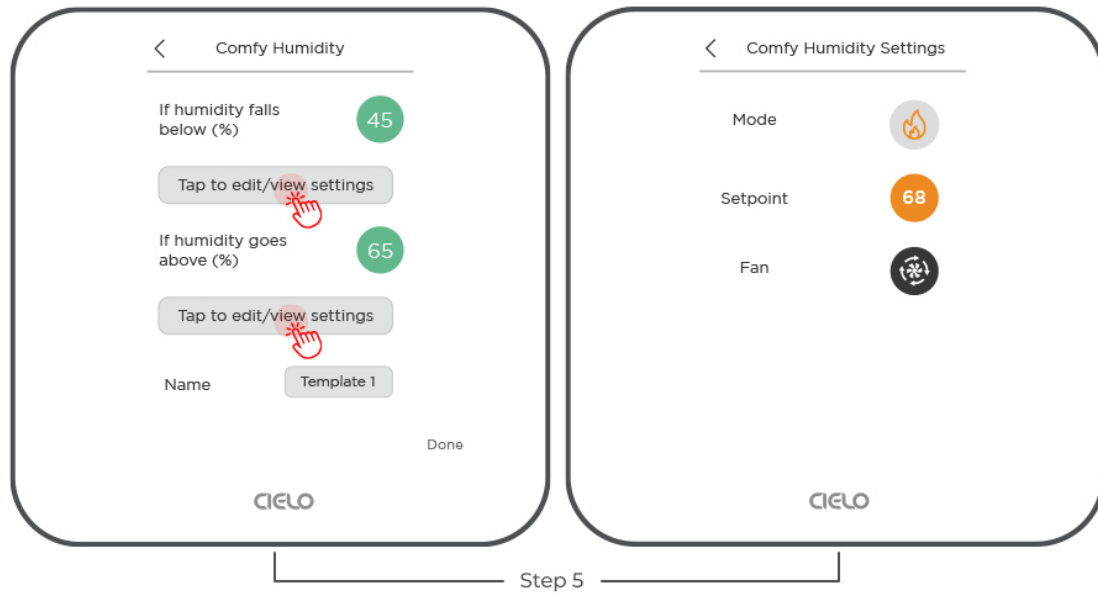
Step 3

Step 4: Choose your preferred humidity range.



Step 4

Step 5: Tap on 'Edit/View settings' to select what actions to perform if the humidity falls below or goes above the set range, e.g., changing its mode, setpoint, and fan speed to help it get back into the preferred humidity range.



Step 6: Add a name for this template and tap on 'Done'.

Step 7: Your Comfy settings are now saved. It is disabled by default. You can turn Comfy Humidity 'On' from the toggle next to the name of the Comfy template.



Adjusting Fan Speed

Step 1: Go to 'Menu' and select 'Fan Speed'.

Step 2: You can select your desired fan speed.



Adjusting Swing Position

Step 1: Go to 'Menu' and select 'Swing Control'.

Step 2: You can adjust the swing position as required.



Switching the LED light On/Off of the Indoor Unit

Step 1: Go to 'Menu' and select 'LED/Display Control'.

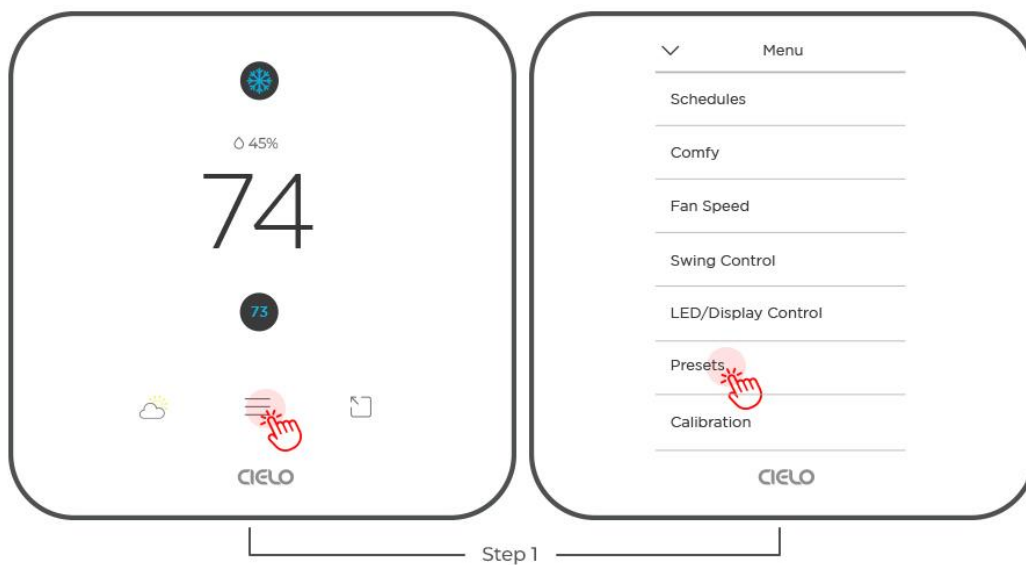
Step 2: You can switch on/off the LED of your mini-split indoor unit.



Editing a Preset

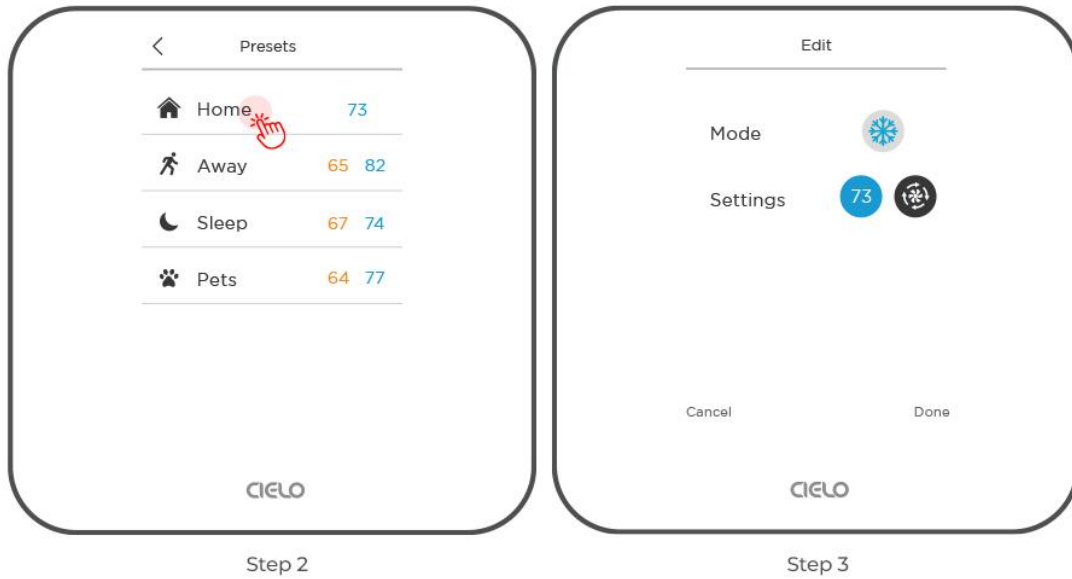
You can enjoy a truly tailored experience with predefined comfort settings, including Home, Away, Sleep, and Pets.

Step 1: Go to 'Menu' and select 'Presets'.



Step 2: Select the 'Preset' you want to edit.

Step 3: Change the mode, adjust the temperature setpoint and fan speed according to your preferred settings.

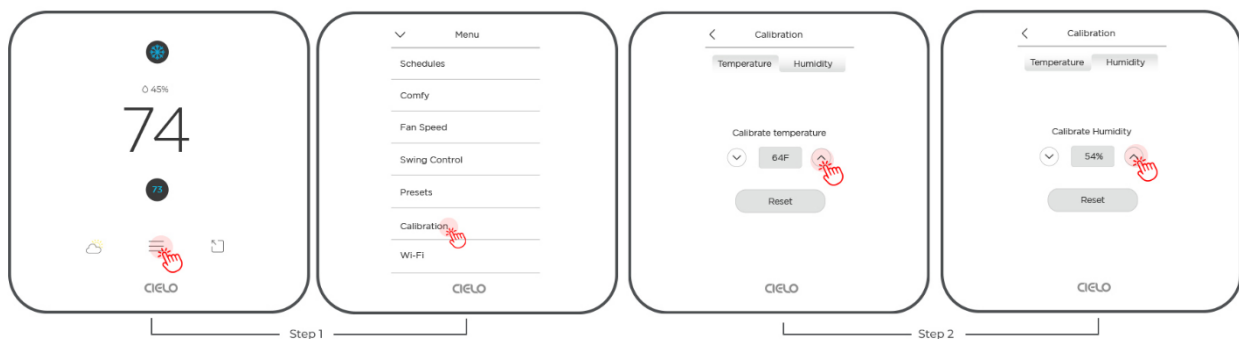


Calibrating Temperature & Humidity

Calibration helps correct inaccuracies caused by differences between the ambient temperature/humidity levels near your Breez Edge and the rest of your room.

Step 1: Go to 'Menu' and select 'Calibration'.

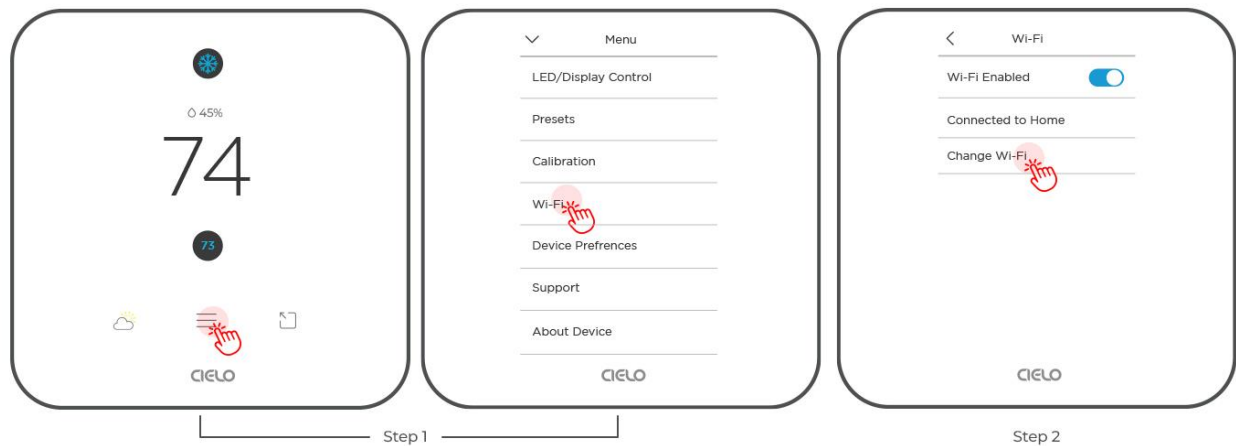
Step 2: Use the up/down arrows to calibrate the temperature and humidity as required.



Changing Wi-Fi

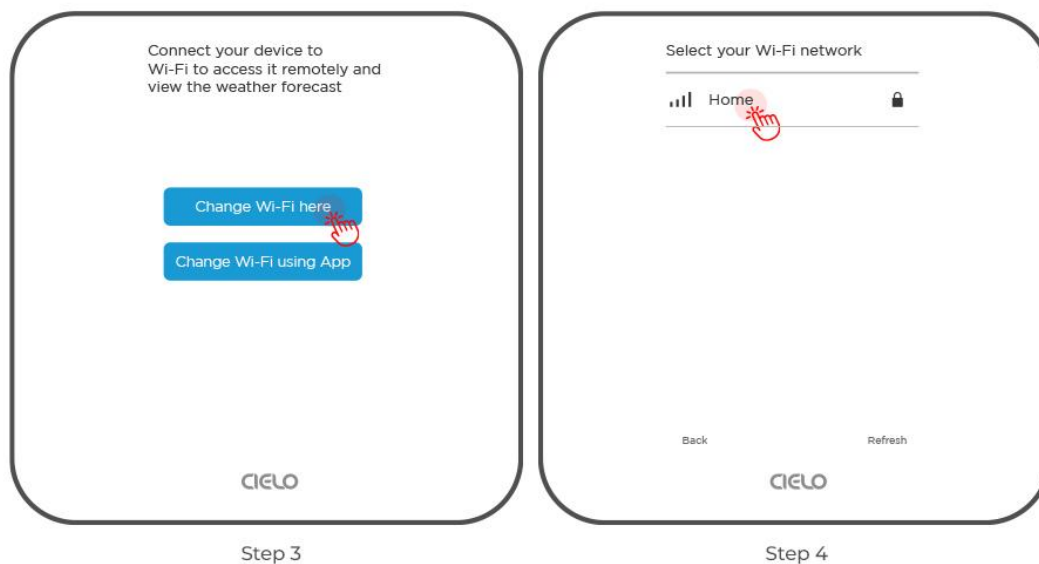
Step 1: Go to 'Menu' and select 'Wi-Fi'.

Step 2: Select 'Change Wi-Fi'.

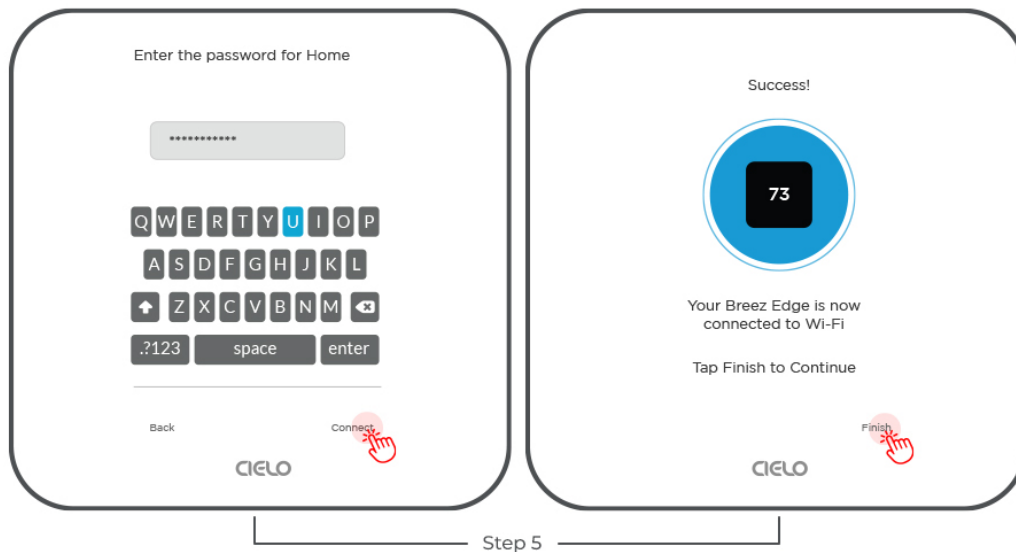


Step 3: Tap on 'Change Wi-Fi here'. It will start scanning, and a list of available Wi-Fi networks will appear.

Step 4: Select your desired Wi-Fi network.



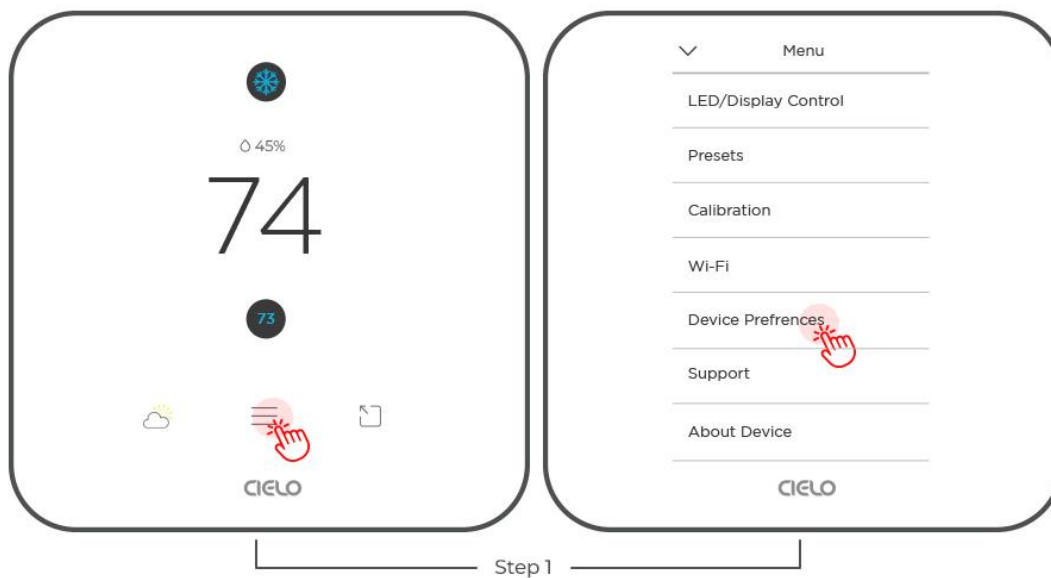
Step 5: Enter the password and tap 'Connect'.



Device Preferences

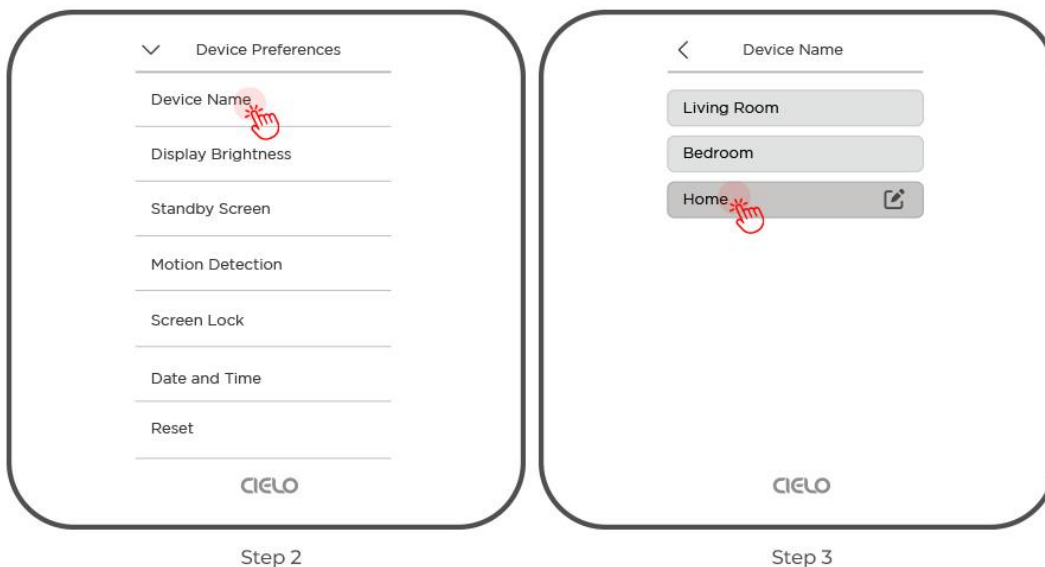
Changing Device Name

Step 1: Go to 'Menu' and select 'Device Preferences'.



Step 2: Select 'Device Name'.

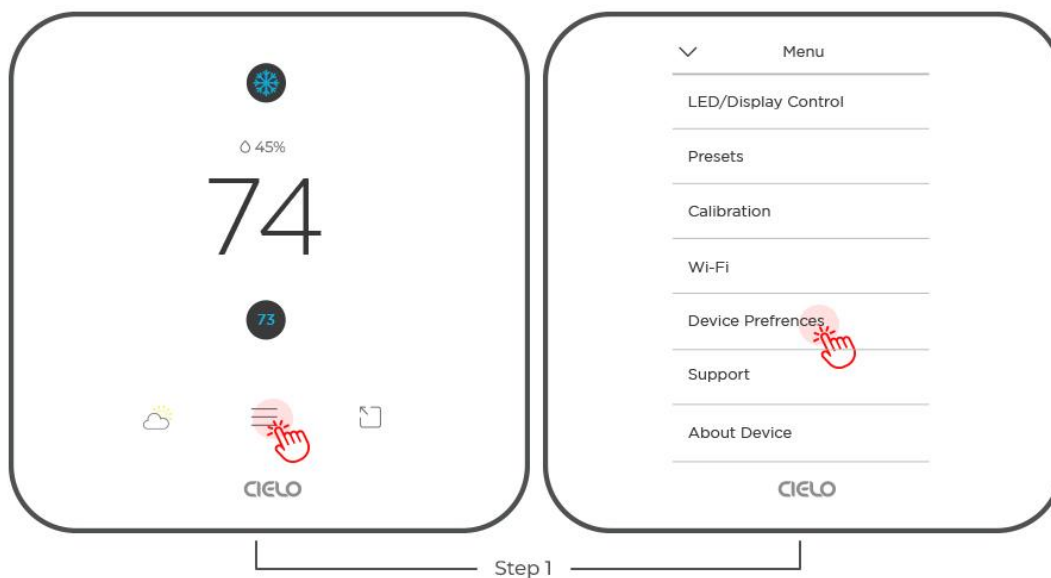
Step 3: Select an existing name from the list or enter your own.



Adjusting Display Brightness

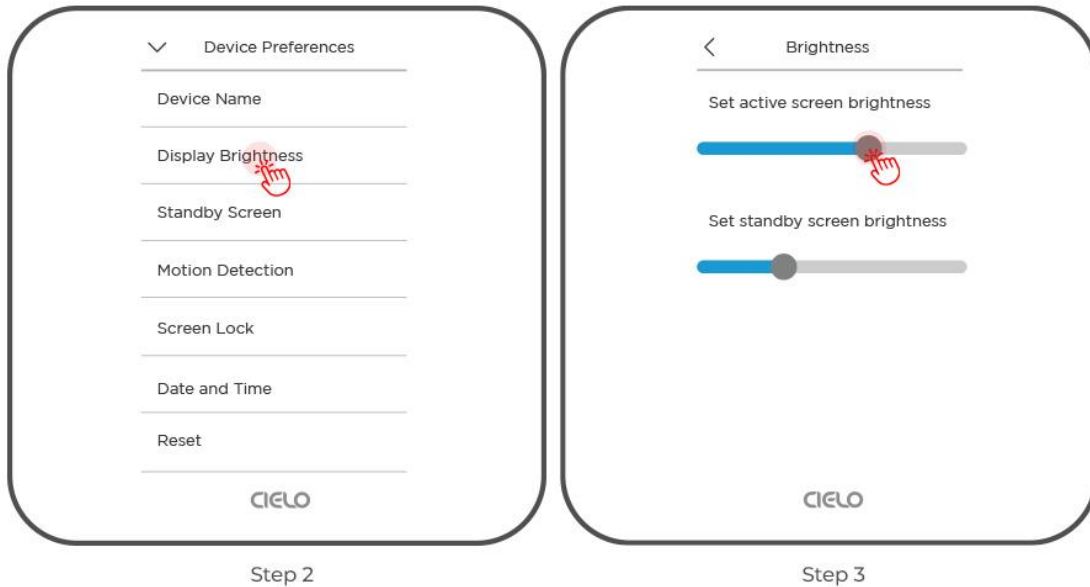
You can adjust the screen brightness of both the Control and Standby screens.

Step 1: Go to 'Menu' and select 'Device Preferences'.



Step 2: Select 'Display Brightness'.

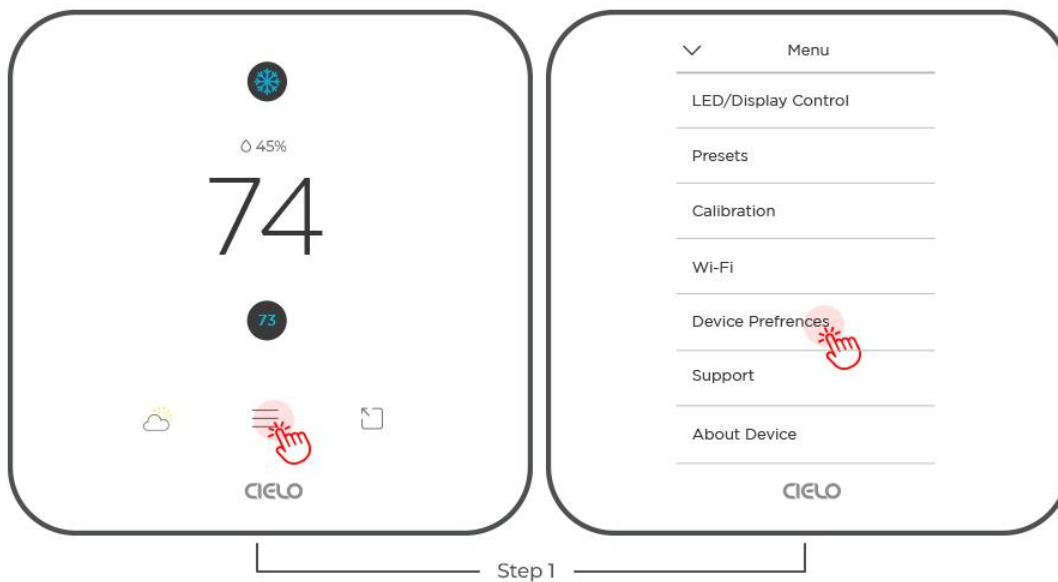
Step 3: Use the slider to adjust the brightness.



Switch to Standby Screen

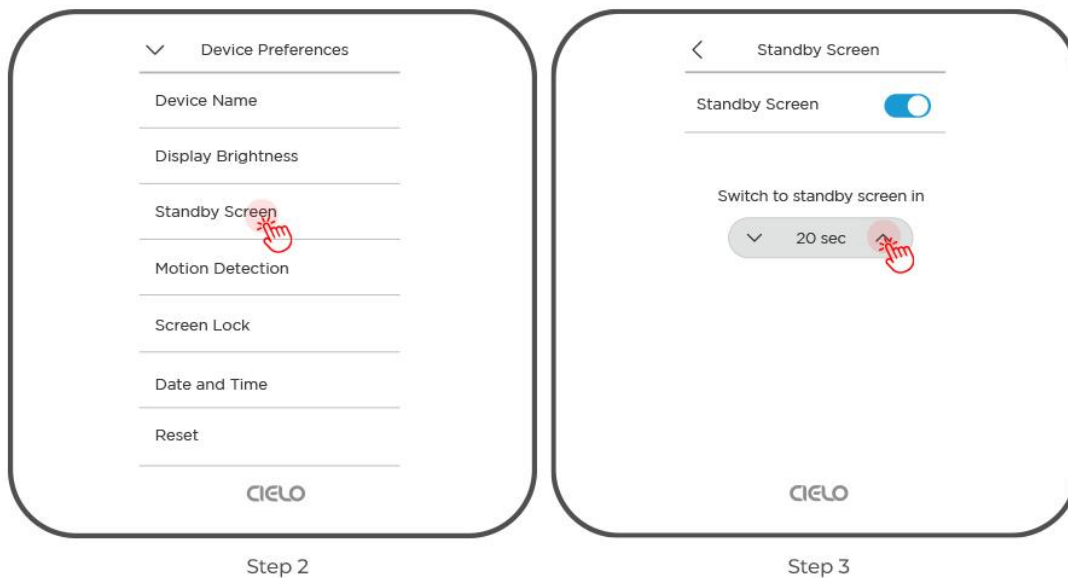
You can adjust how long it takes to switch to the standby screen. You can also toggle it on/off.

Step 1: Go to 'Menu' and select 'Device Preferences'.



Step 2: Select 'Standby Screen'.

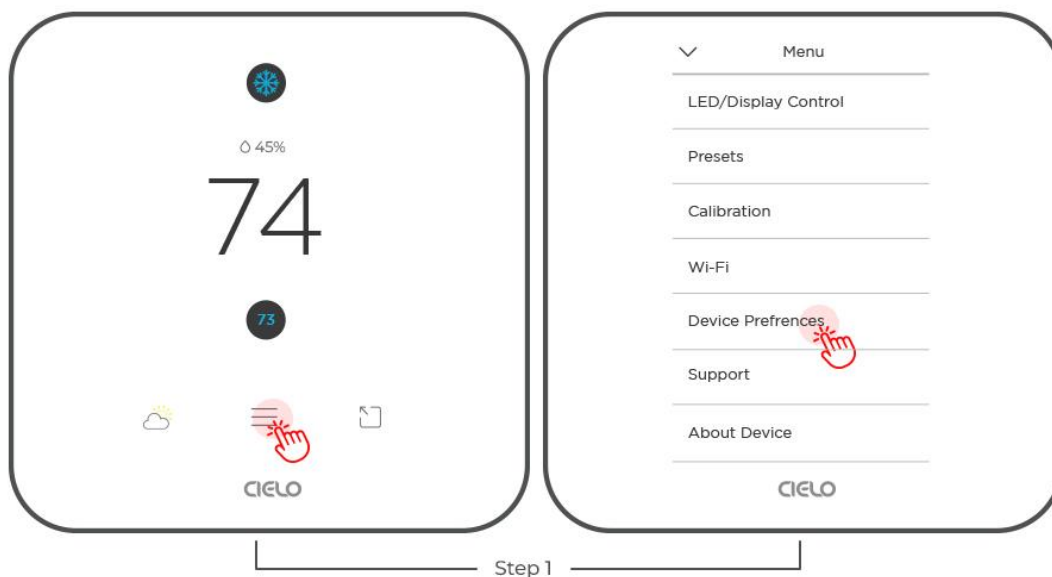
Step 3: Use the up/down arrows to adjust the time.



Motion Detection

Cielo Breez Edge can automatically detect your presence using the motion sensors and activate the control screen. You can also set it up to switch from Away to Home settings when motion is detected. Here's how to do it:

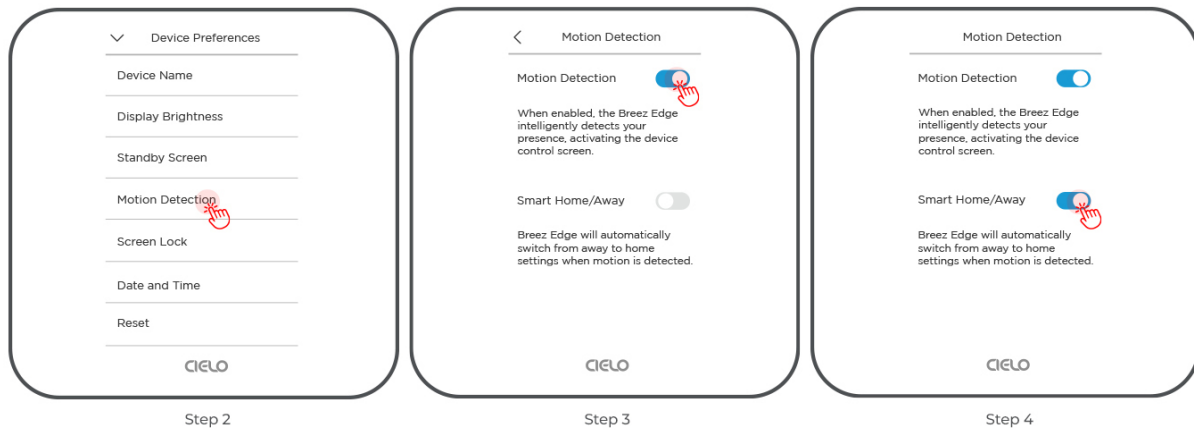
Step 1: Go to 'Menu' and select 'Device Preferences'.



Step 2: Select 'Motion Detection'.

Step 3: Toggle the button to turn on motion detection. When enabled, Breez Edge will detect your presence, activating the control screen.

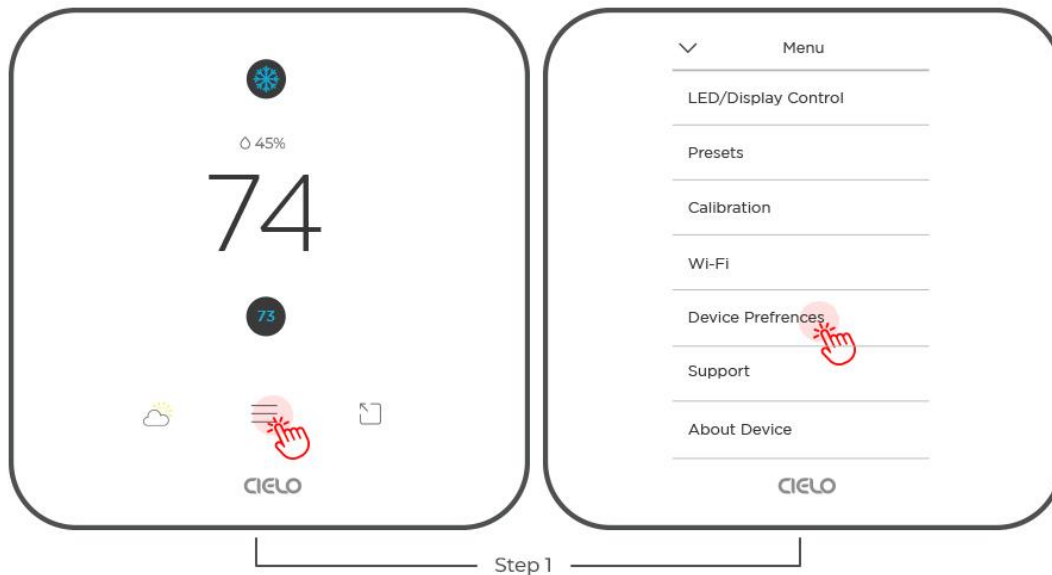
Step 4: Toggle on Smart Home/Away. When motion is detected, the system will automatically apply the Home Preset.



Locking Your Breez Edge

You can easily lock your Breez Edge to prevent unwanted adjustments.

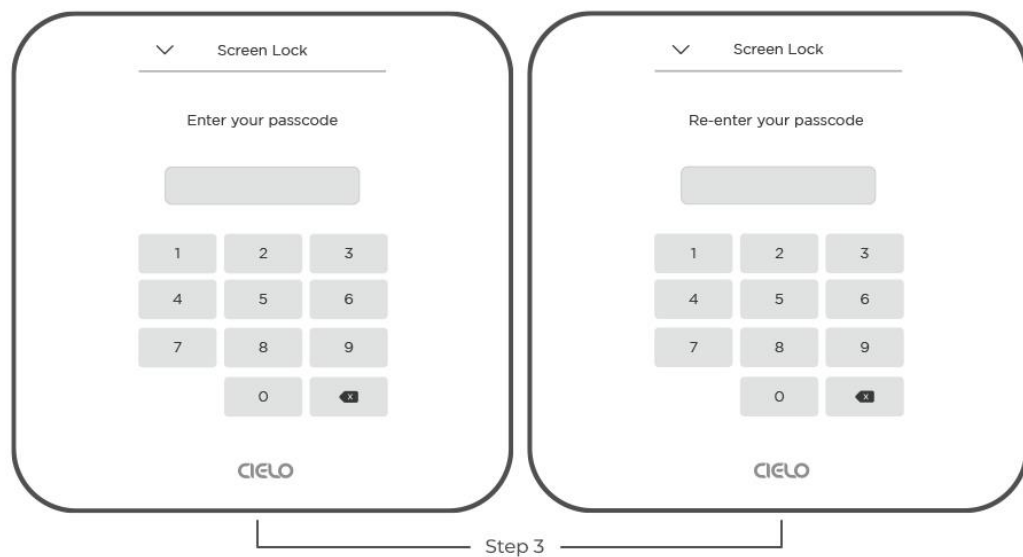
Step 1: Go to 'Menu' and select 'Device Preferences'.



Step 2: Select 'Screen Lock'. Toggle the screenlock button to set your passcode.

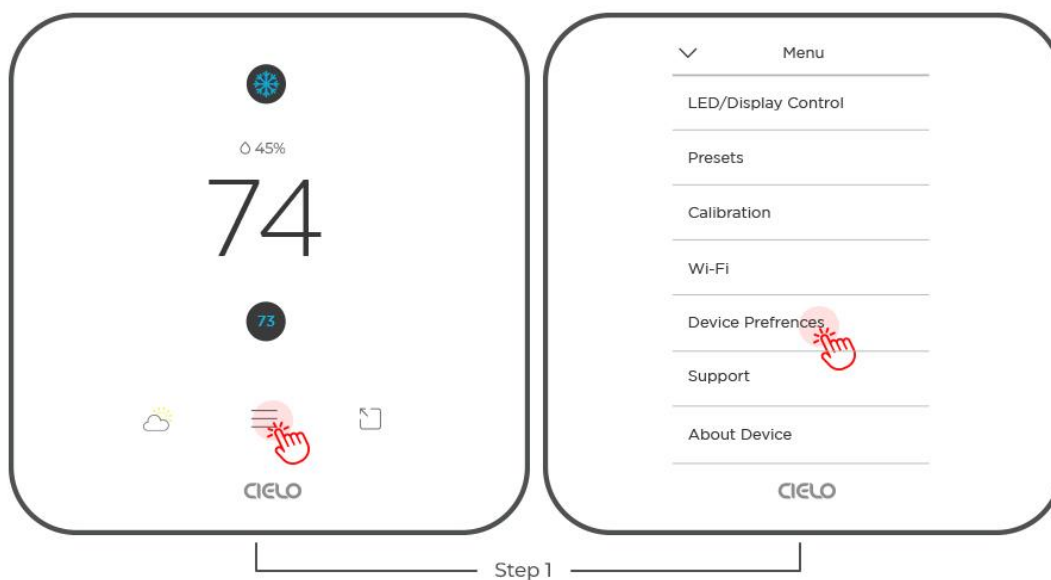


Step 3: Enter your passcode. Re-enter it. Your Breez Edge screen will be locked. You can unlock it using this passcode.



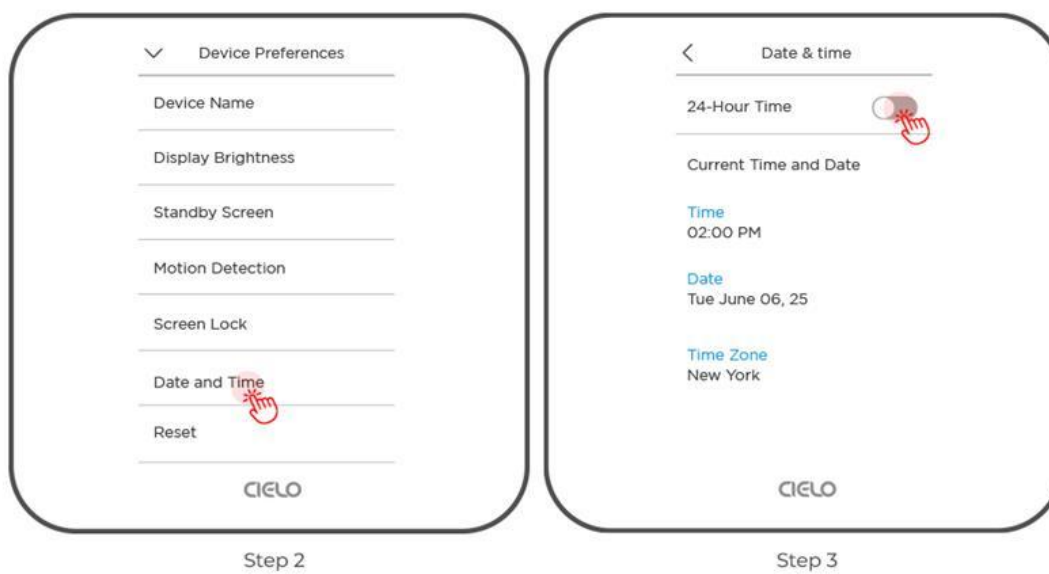
Change Time Format

Step 1: Go to 'Menu' and select 'Device Preferences'.



Step 2: Select 'Date & Time'.

Step 3: You can toggle on/off the 24-hour time.



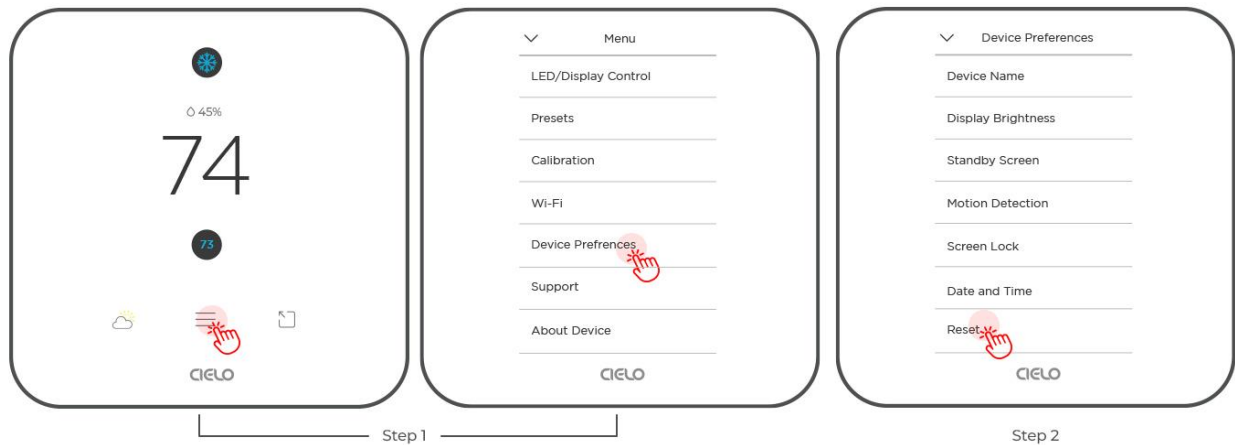
Resetting Your Breez Edge

Resetting Preferences and Schedules

Resetting Preferences and Schedules will delete all the current settings and preferences.

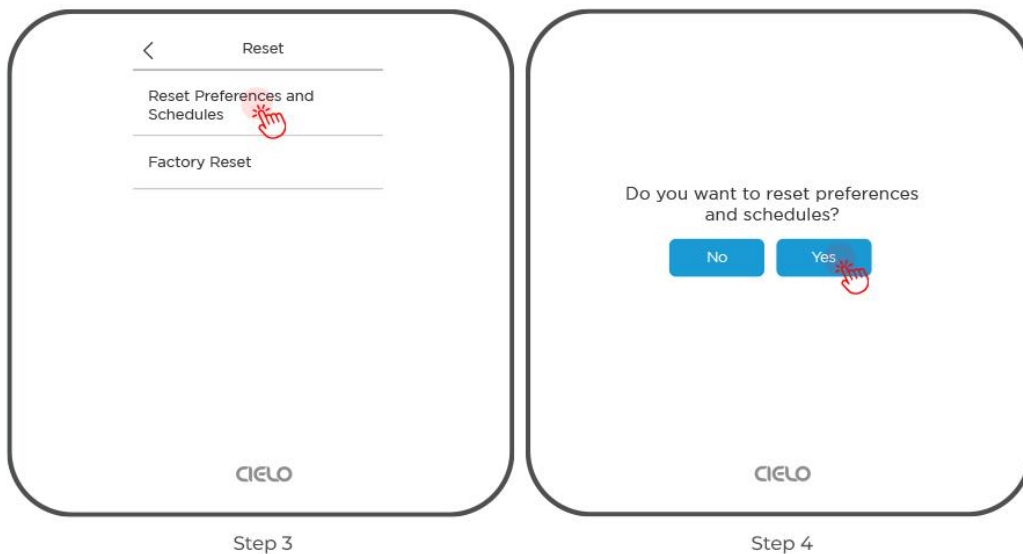
Step 1: Go to 'Menu' and select 'Device Preferences'.

Step 2: Select 'Reset'.



Step 3: Select 'Reset Preferences and Schedules'.

Step 4: Tap "Yes".

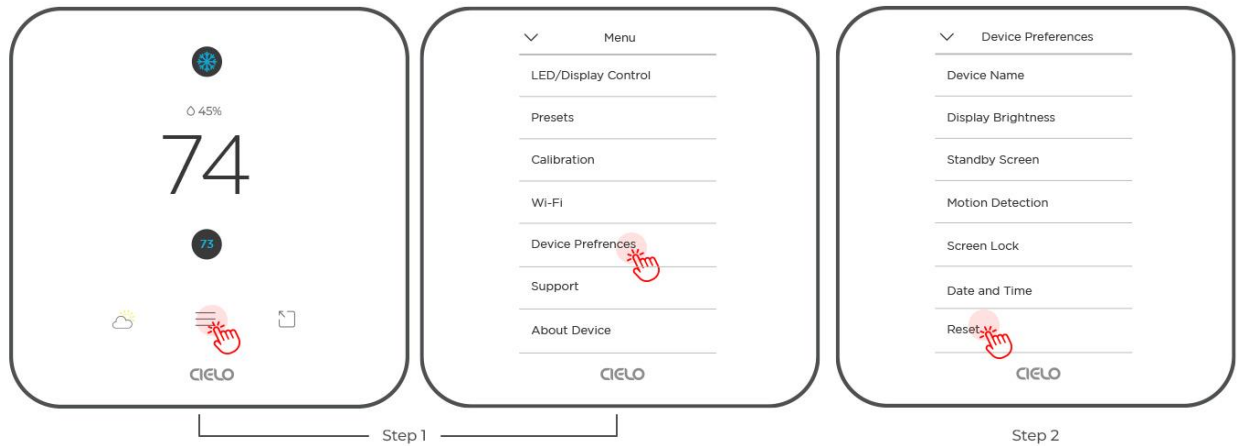


Factory Reset

The Factory Reset option restores your device to its factory settings.

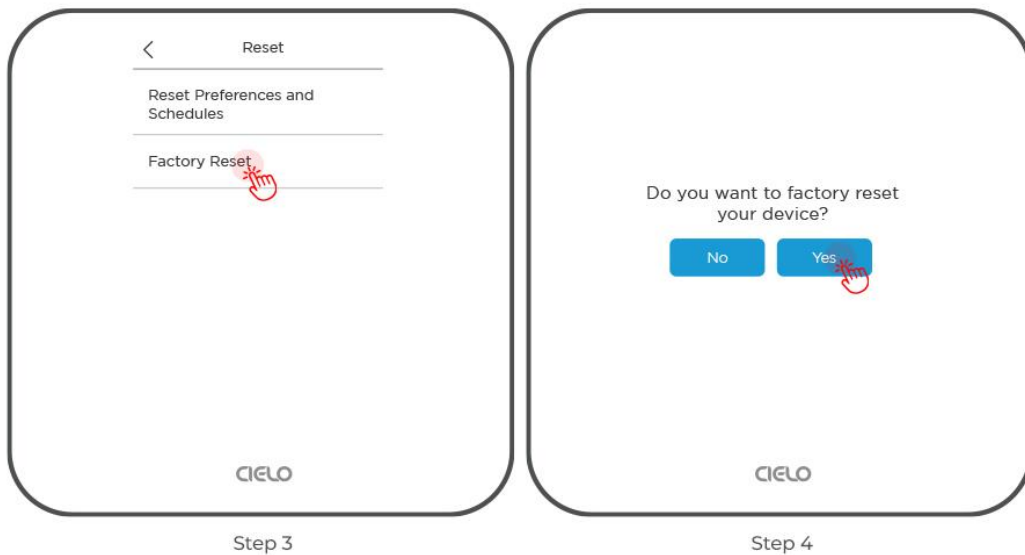
Step 1: Go to 'Menu' and select 'Device Preferences'.

Step 2: Select 'Reset'.



Step 3: Select 'Factory Reset'.

Step 4: Tap "Yes".



Checking Details of Your Breez Edge

Step 1: Go to 'Menu' and select 'About'.

You can see all the device details here.

