

# Cielo Smart Thermostat

Cielo Home App Controls

## Registering Your Thermostat via the Cielo Home App

### Step 1: Prior to App Installation

#### For your phone:

- Make sure your smartphone's Bluetooth is turned ON.
- Make sure your smartphone's Wi-Fi is turned ON.
- Make sure your smartphone has internet access.

#### For your Wi-Fi router:

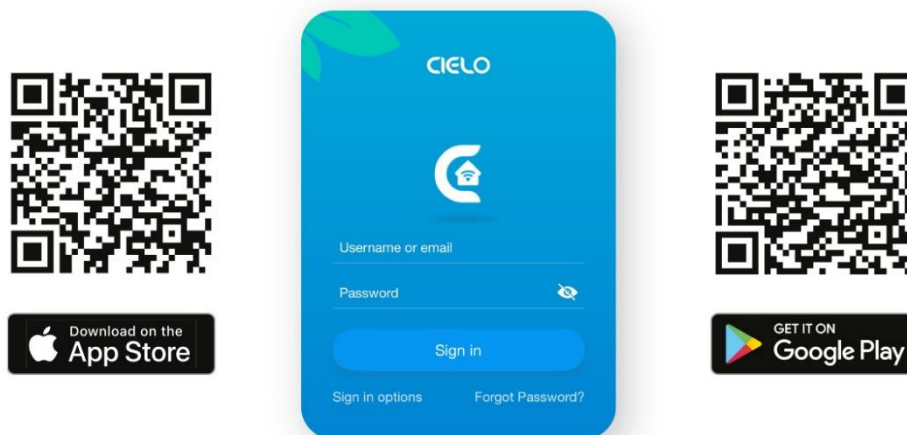
- Make sure you have a working internet connection on your Wi-Fi router.
- Make sure there is no proxy server or authentication server configured on your internet connection.
- Make sure there is no captive portal on your Wi-Fi router.

**Important:** Make sure IP isolation or client isolation is turned OFF on your Wi-Fi router.

### Step 2: App Installation & Registration iOS / Android

Install the 'Cielo Home' app from the App Store/Play Store. Search for the Cielo Home app or scan the QR code provided below.

Log in to the app if you already have an account; otherwise, create one using the sign-up option.



**Note for iOS users:**

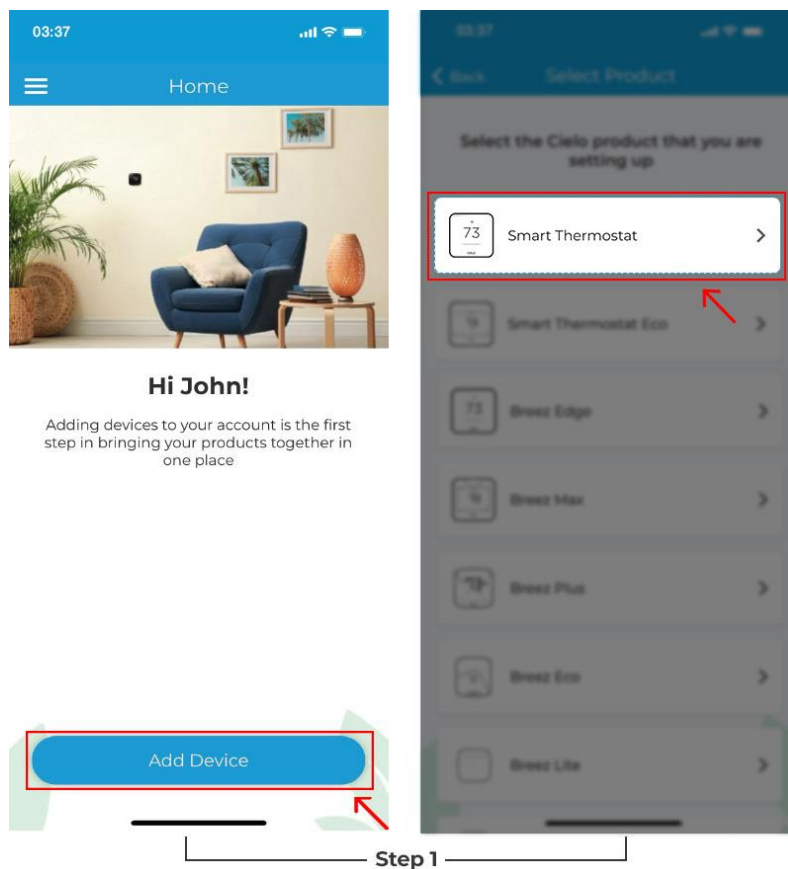
For iOS 13.0 & above, location permission is required to complete the registration process. You may disable it later.

#### **Note for Android users:**

For Android OS 8.1 & above, location permission is required to complete the registration process. You may disable it later.

### **Step 3: Device Registration**

**Step 1:** Open the Cielo Home app, tap 'Add Device' on the home screen, and select Cielo Smart Thermostat from the list of devices.

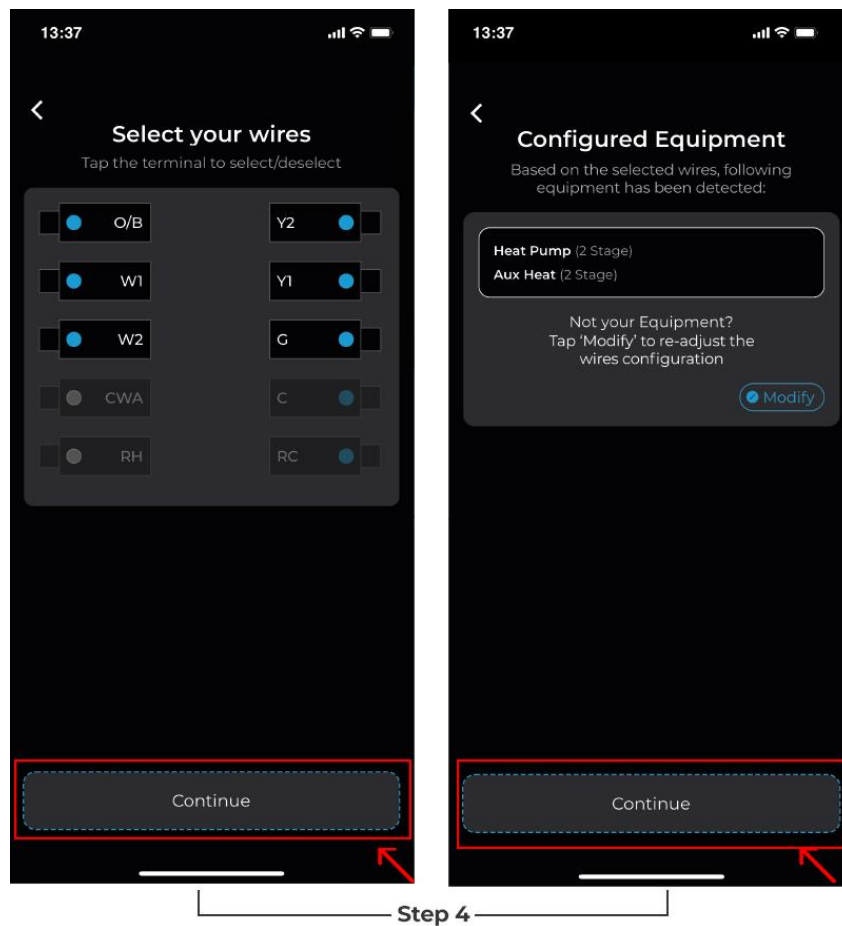


**Step 2:** Tap on 'Continue' to start the registration process.

**Step 3:** Please give the necessary permissions and tap 'Continue'; your thermostat will appear on the screen. Tap on 'Connect' to move to the next step.

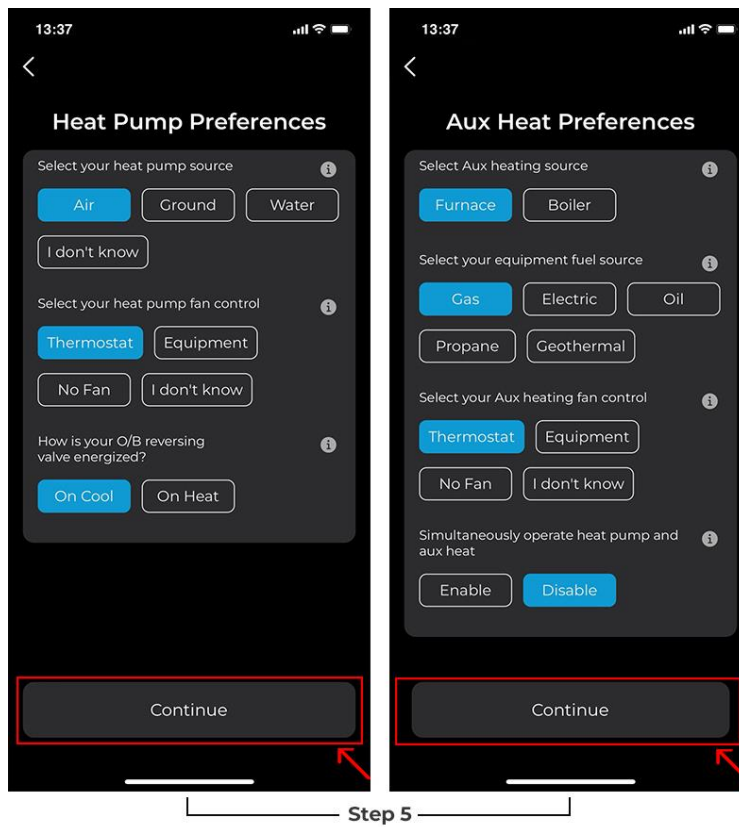
**Step 4:** Select the wires that you have connected with your thermostat backplate. (Refer to the picture you took while installing your thermostat) Tap on 'Continue', and the Cielo Home app will detect your equipment based on the wires selected. Once the equipment is detected, tap on 'Continue' to go to the next step.

**Note:** These screens may appear different based on your wires selection.



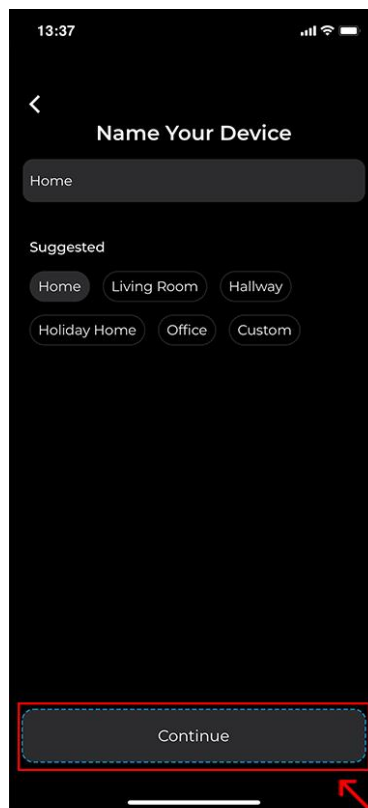
**Note:** In case the detected equipment is wrong, tap 'Modify' and reselect your wires.

**Step 5:** Based on your wire selection, this step requires you to select your heating source and determine how you want your system to work. Tap on 'Continue' after you have configured these settings.



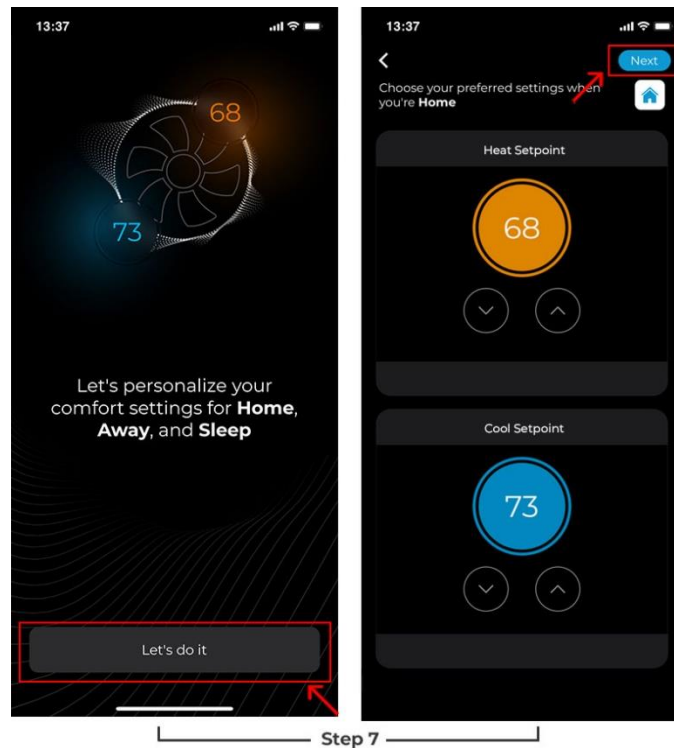
**Note:** The system preferences screen may appear different based on your HVAC system.

**Step 6:** Name your thermostat and tap on 'Continue' to move to the next step.

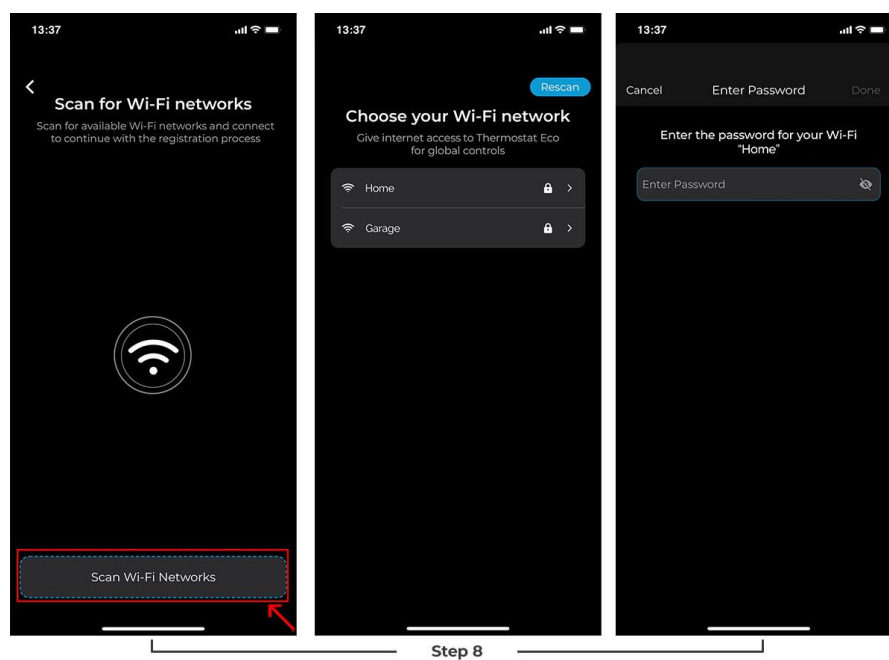


Step 6

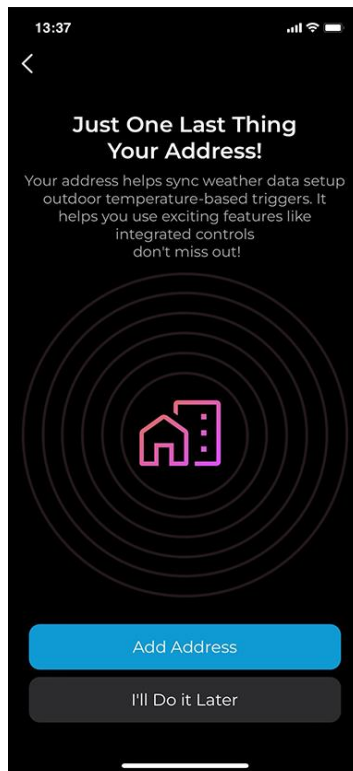
**Step 7:** Next, personalize your desired comfort settings for Home, Away, and Sleep. You can also change these settings later via the app. Tap 'Next' when you are done.



**Step 8:** Tap on 'Scan Wi-Fi Networks' and select your internet connection. Enter your password to connect the smart thermostat to the internet.

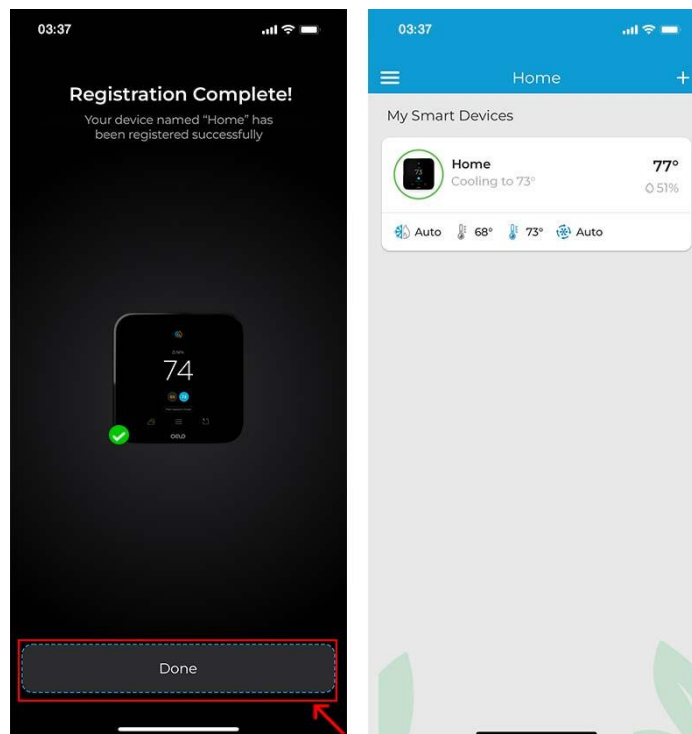


**Step 9:** Add your address to sync weather data. This will allow you to use exciting features like integrated controls (set-up automation based on outdoor temperature).

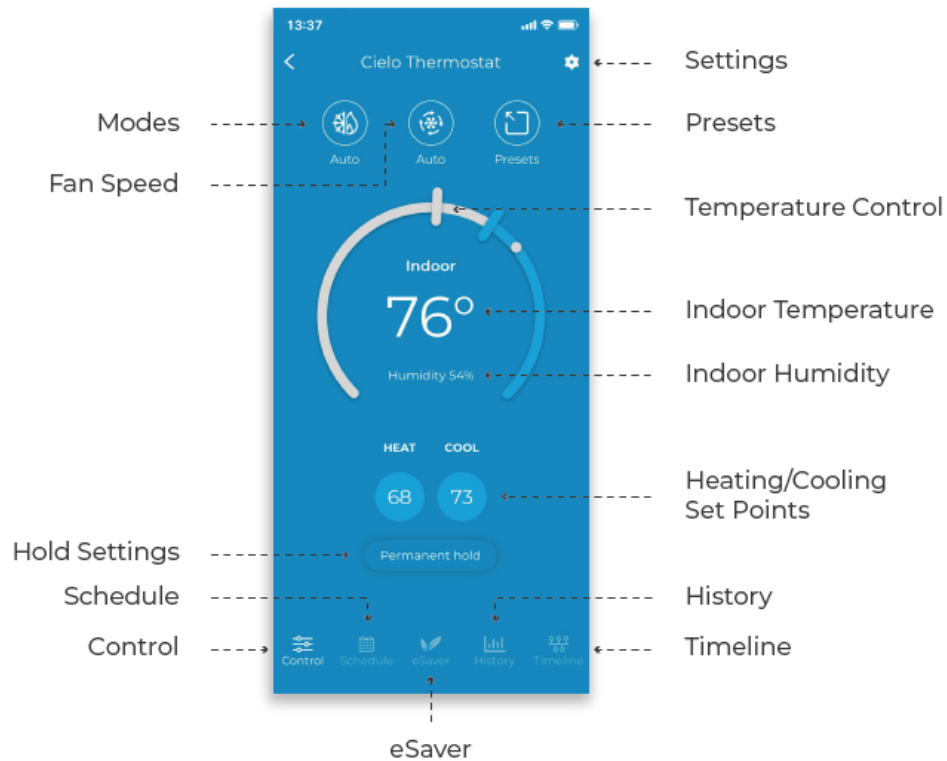


Step 9

The registration process is complete. Tap 'Done', and your Thermostat will appear on the Home Screen.



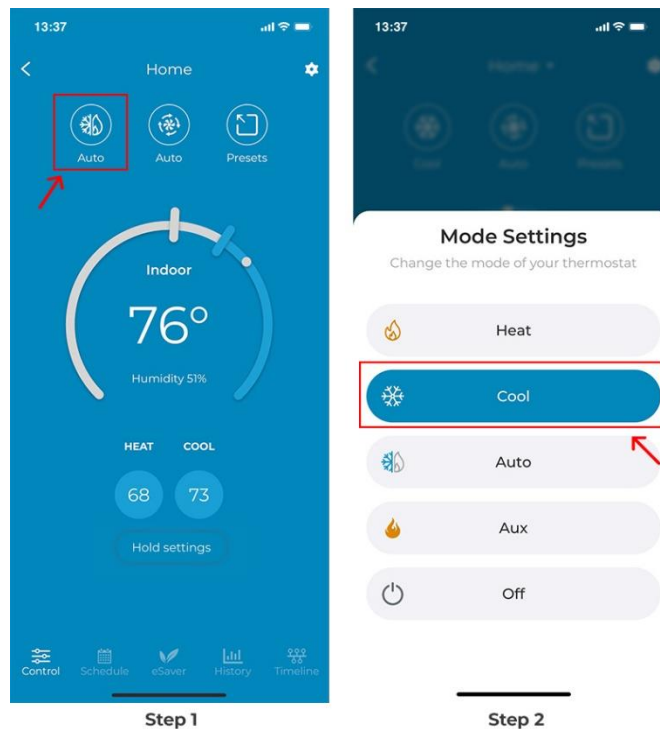
## Cielo Home App Controls



### Changing the Mode of Your HVAC System

**Step 1:** On the Control screen, tap on the 'Mode' icon.

**Step 2:** You can select your desired mode by tapping on it.

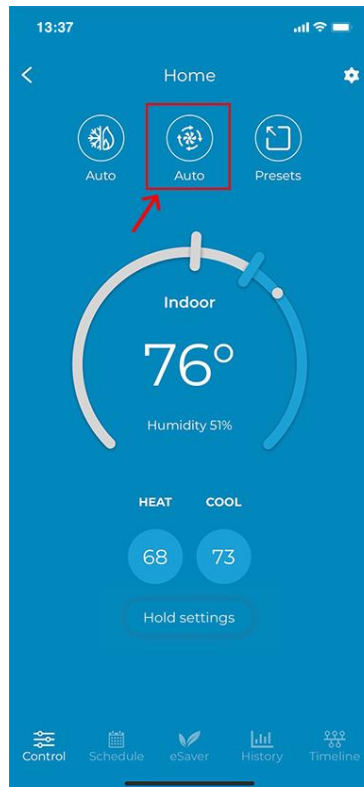




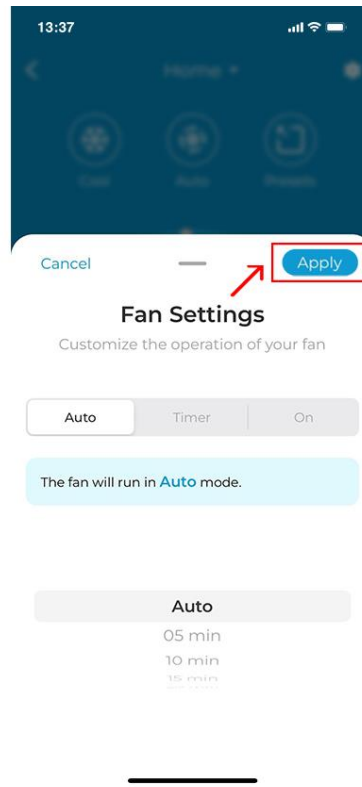
## Changing Fan Settings

**Step 1:** On the Control screen, tap on the fan icon.

**Step 2:** You have the option to run the fan on Auto, set a timer, or turn it on continuously.



Step 1



Step 2

## Setting a Preset

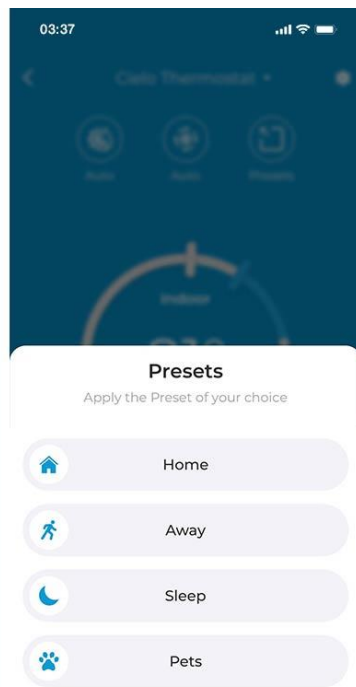
You can enjoy a truly tailored experience with predefined comfort settings, including Home, Away, Sleep, and Pets.

**Step 1:** On the Control screen, tap on the 'Presets' icon.

**Step 2:** You can apply the preset of your choice by tapping on it.



Step 1



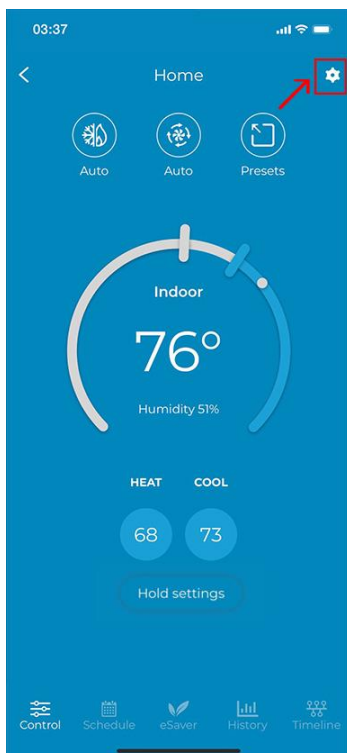
Step 2

## Editing a Preset

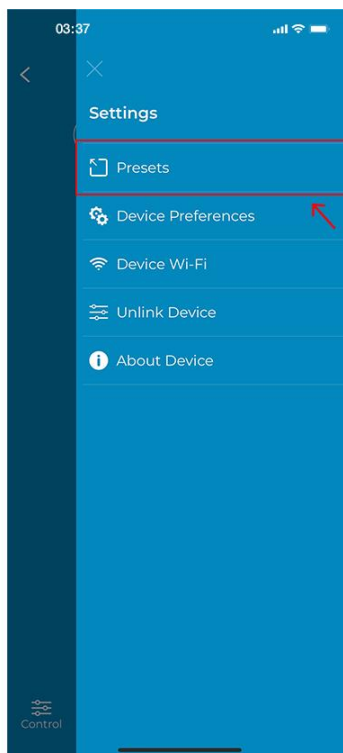
**Step 1:** On the Control Screen, tap on the 'Settings' icon at the top right corner.

**Step 2:** Tap on 'Presets'.

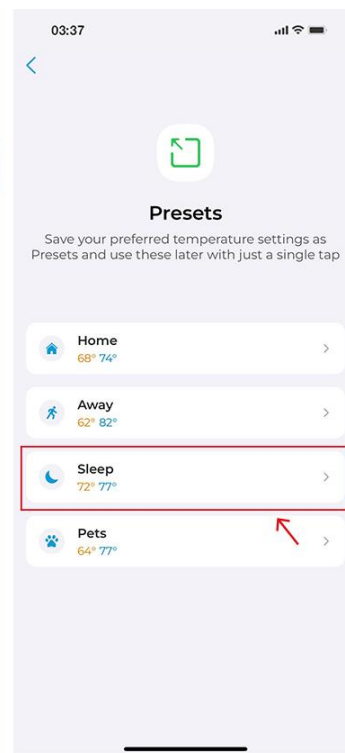
**Step 3:** Select the Preset you want to edit.



Step 1

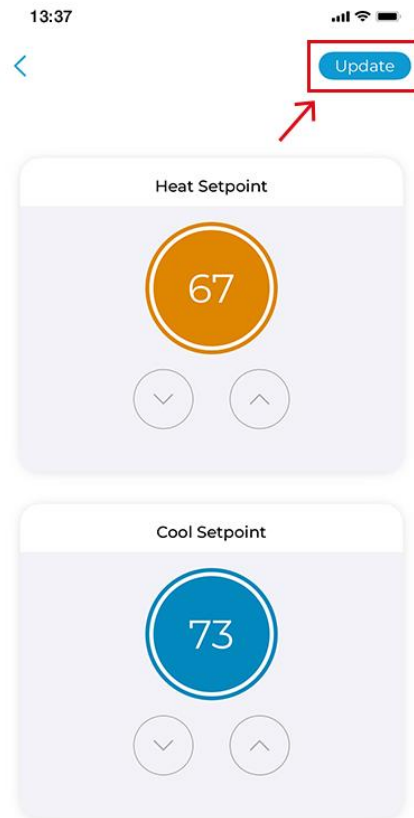


Step 2



Step 3

**Step 4:** Adjust the heating and cooling setpoint. Tap on 'Save' once done.



**Step 4**

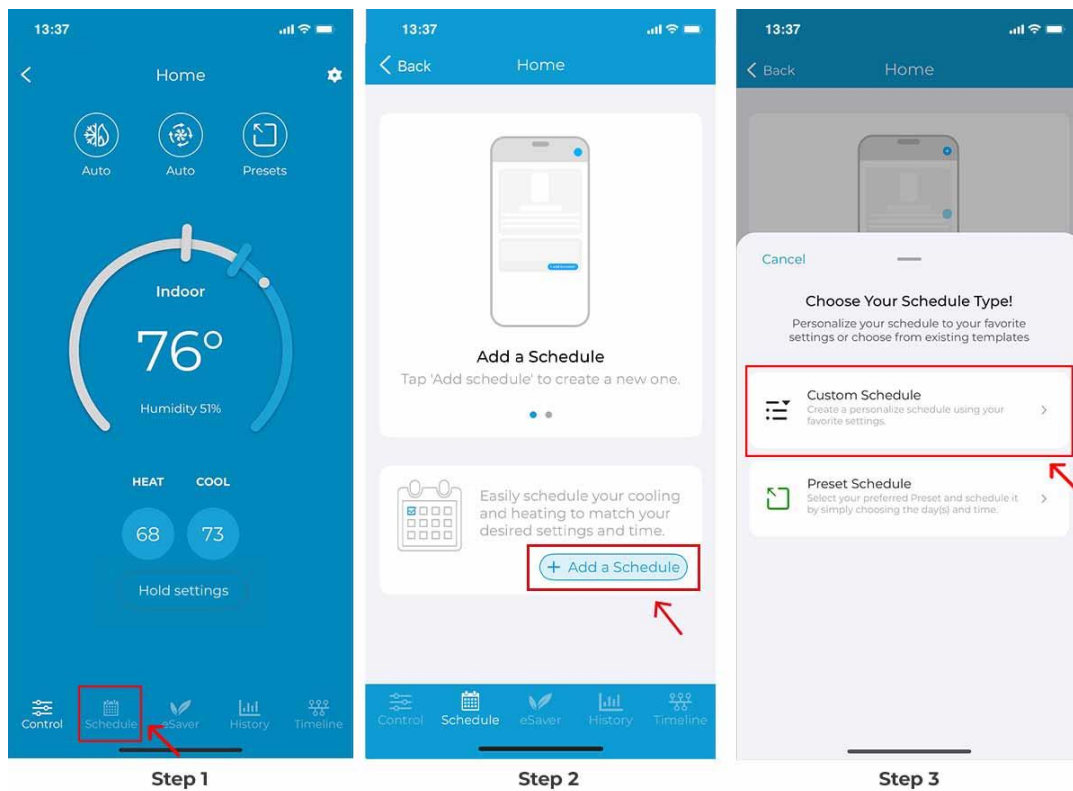
## Setting up Schedules

Cielo Smart Thermostat lets you set intelligent cooling/heating schedules so you can enjoy a true smart home experience and maximize your energy savings.

**Step 1:** On the Control screen, tap on 'Schedule' in the navigation bar.

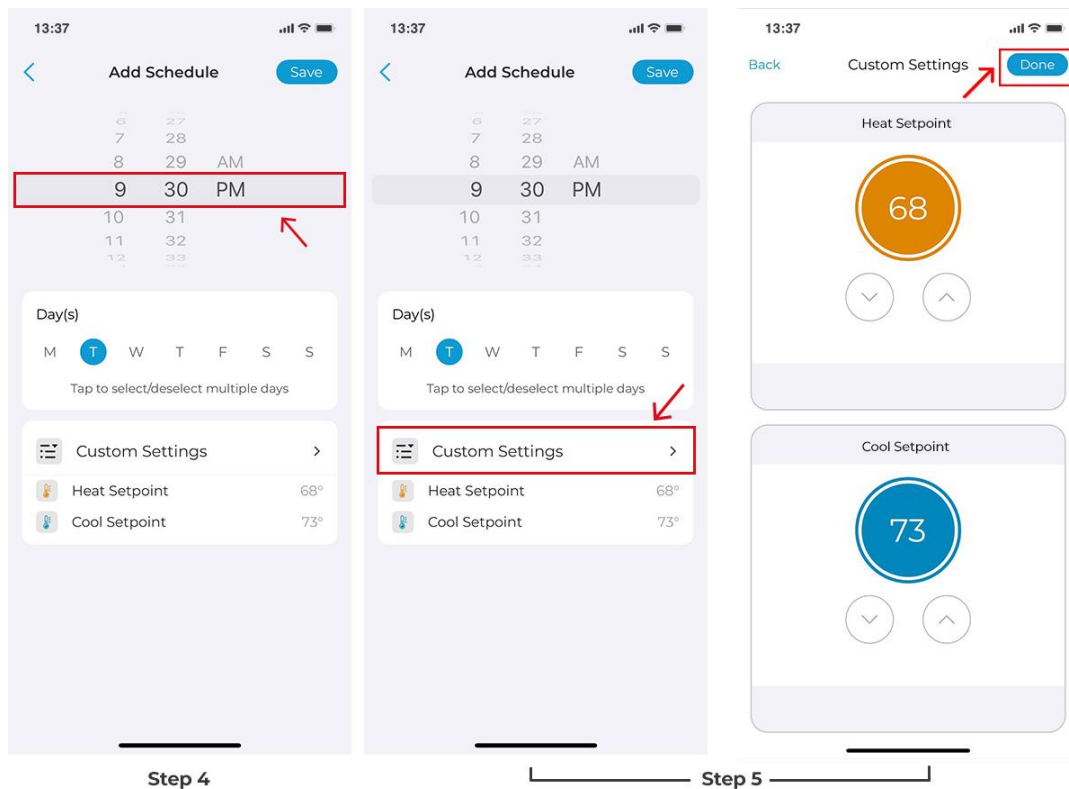
**Step 2:** Tap on the '+ Add Schedule' icon.

**Step 3:** Tap on 'Custom Schedule'.



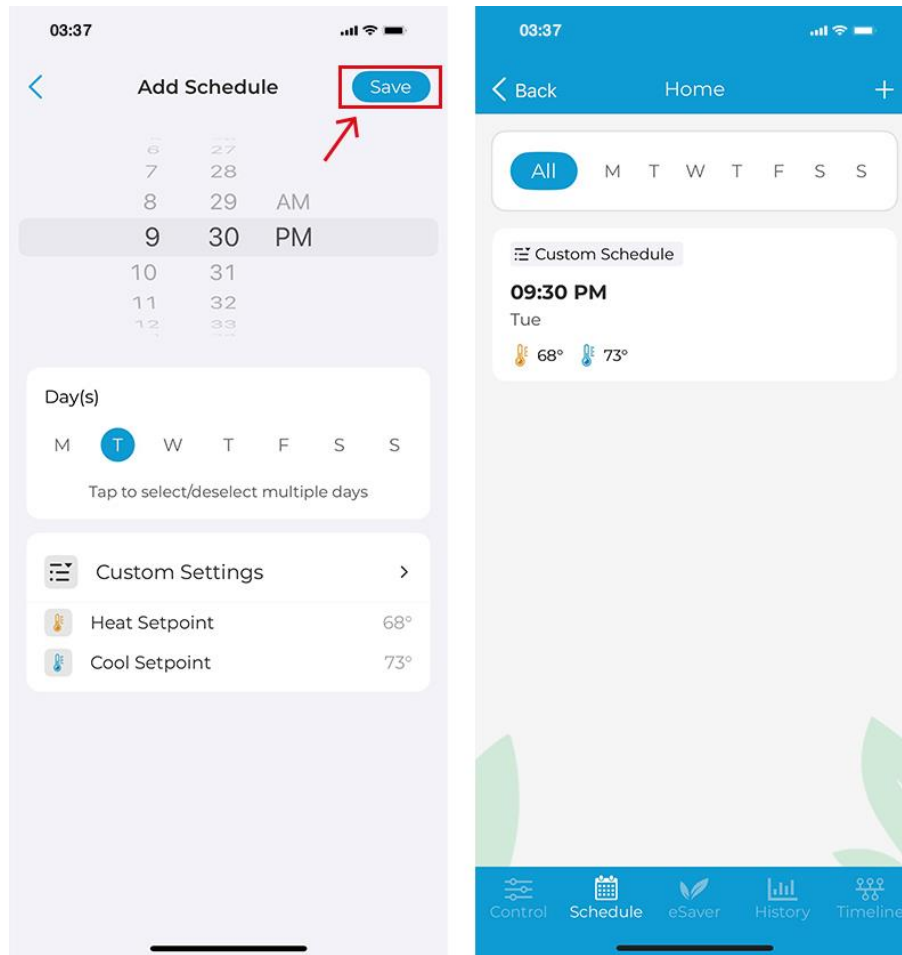
**Step 4:** Select the time and day(s) on which you want the schedule to run.

**Step 5:** Tap on 'Custom Settings and set your Heat and Cool setpoints as per your preference, then tap 'Done'.



**Step 6:** Now tap on 'Save'.

Your custom schedule is now set.

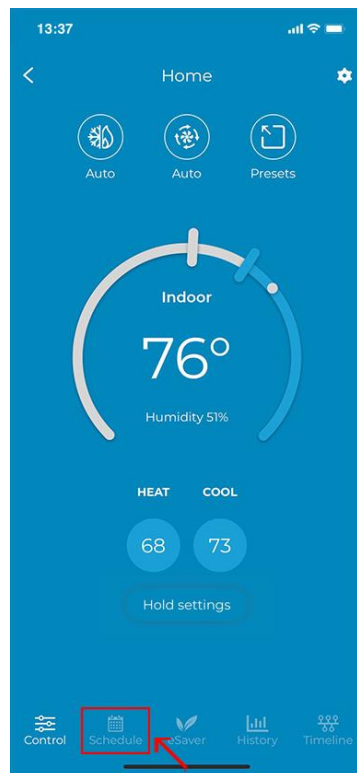


Step 6

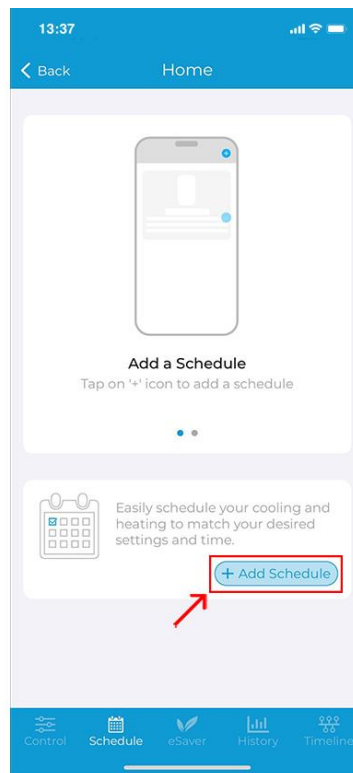
## Setting up Preset Schedules

**Step 1:** On the Control screen, tap on 'Schedule' in the navigation bar.

**Step 2:** Tap on the '+ Add Schedule' icon.

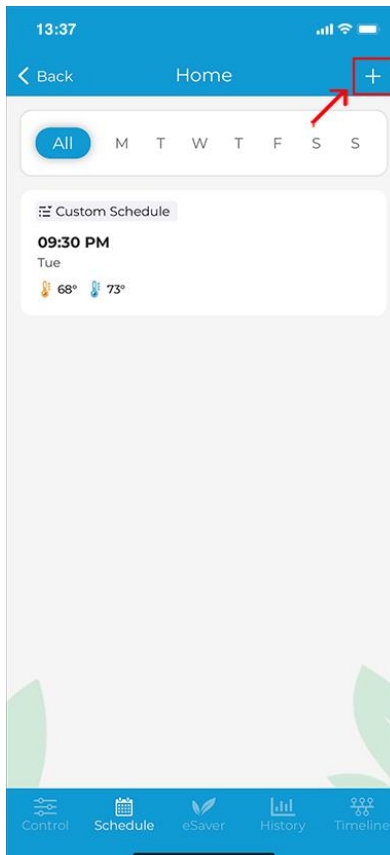


Step 1



Step 2

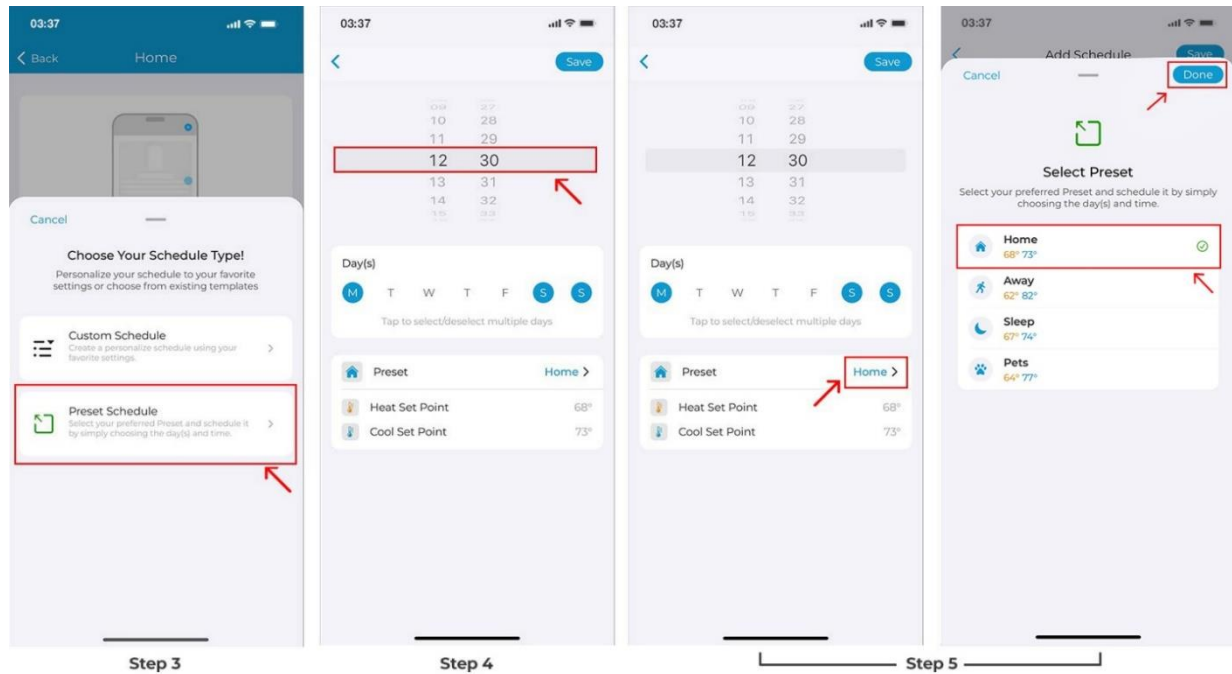
If you already have a schedule added, the '+' icon will appear in the top right corner.



**Step 3:** Tap on 'Preset Schedule'.

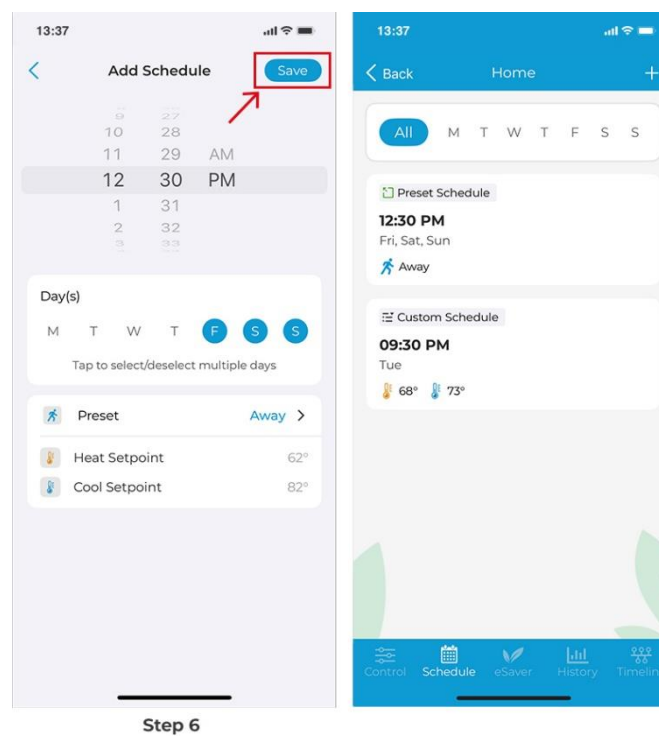
**Step 4:** Select the time and day(s) on which you want the schedule to run.

**Step 5:** Select the 'Preset' you want to schedule, i.e., Home, Away, Sleep, Pets. Tap 'Done'.



**Step 6:** Now tap on 'Save'.

Your preset schedule is now set.



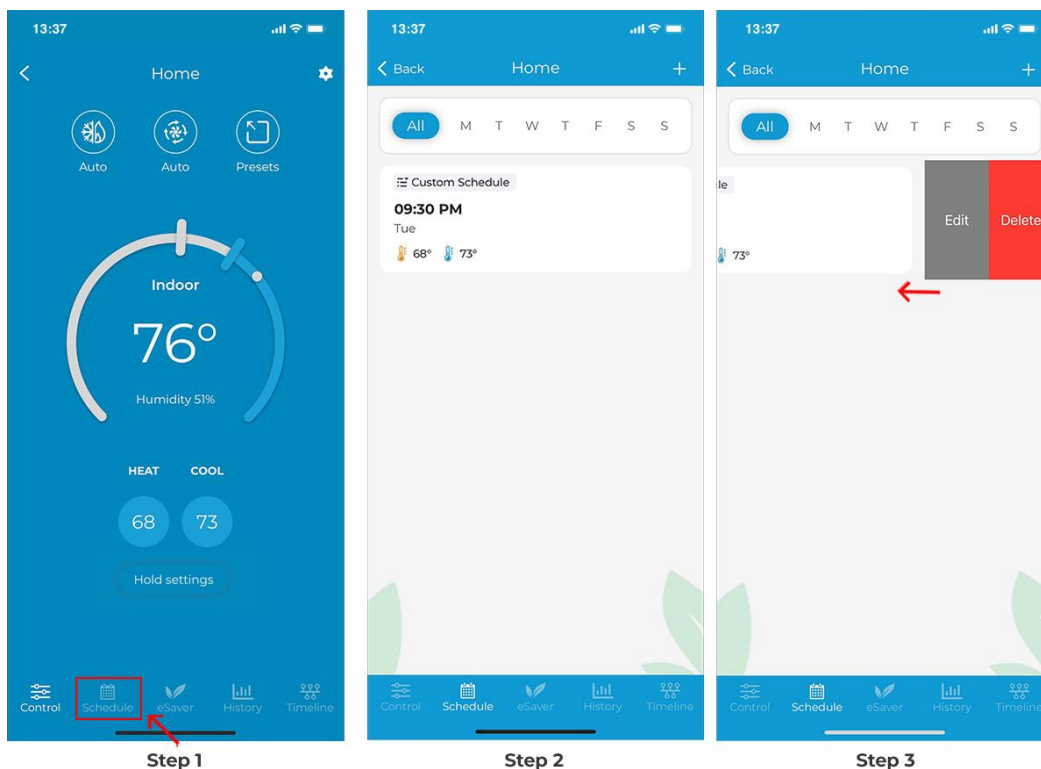
## Deleting/Editing a schedule

**Step 1:** On the Control screen, tap on 'Schedules' in the navigation bar.

**Step 2:** In the 'Schedule' tab, you will see all your set schedules.

**Step 3:** Swipe left on the schedule you want to edit or delete until both options appear.

Choose your desired option and proceed. You can also swipe left to right till the edge of the screen to delete the schedule.



## Enabling Geofencing (Location-Based Controls)

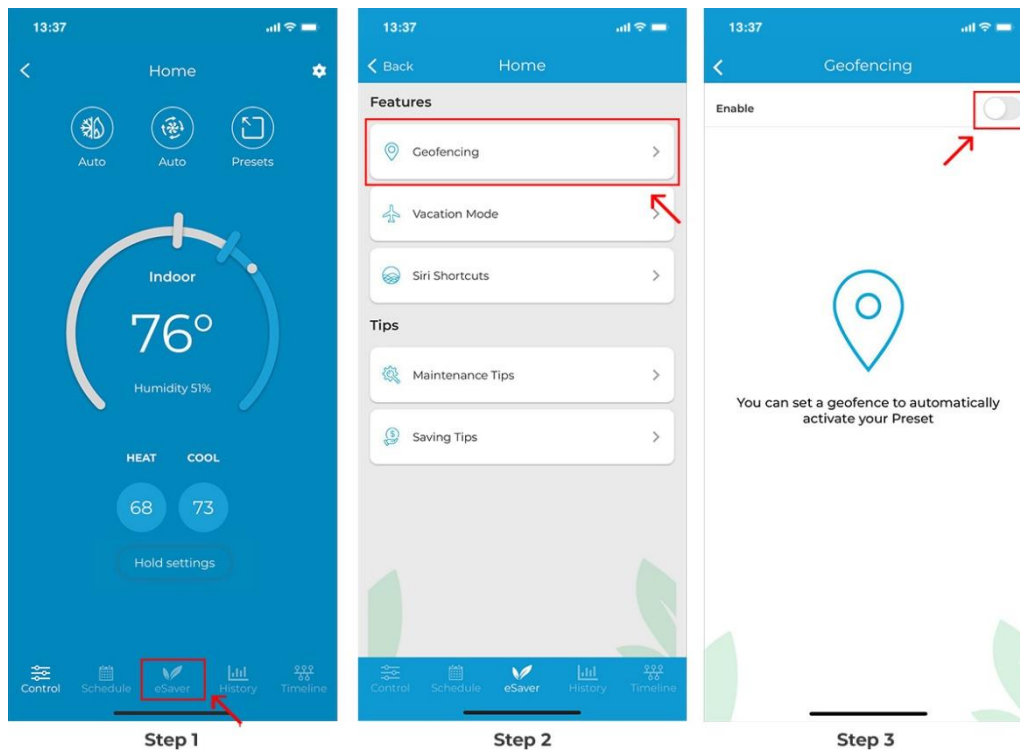
Geofencing turns the HVAC system on before you arrive and turns it off after you have left the pre-set location.

**Step 1:** On the Control screen, Tap on 'e-saver' in the navigation bar.

**Step 2:** Tap on 'Geofencing'.

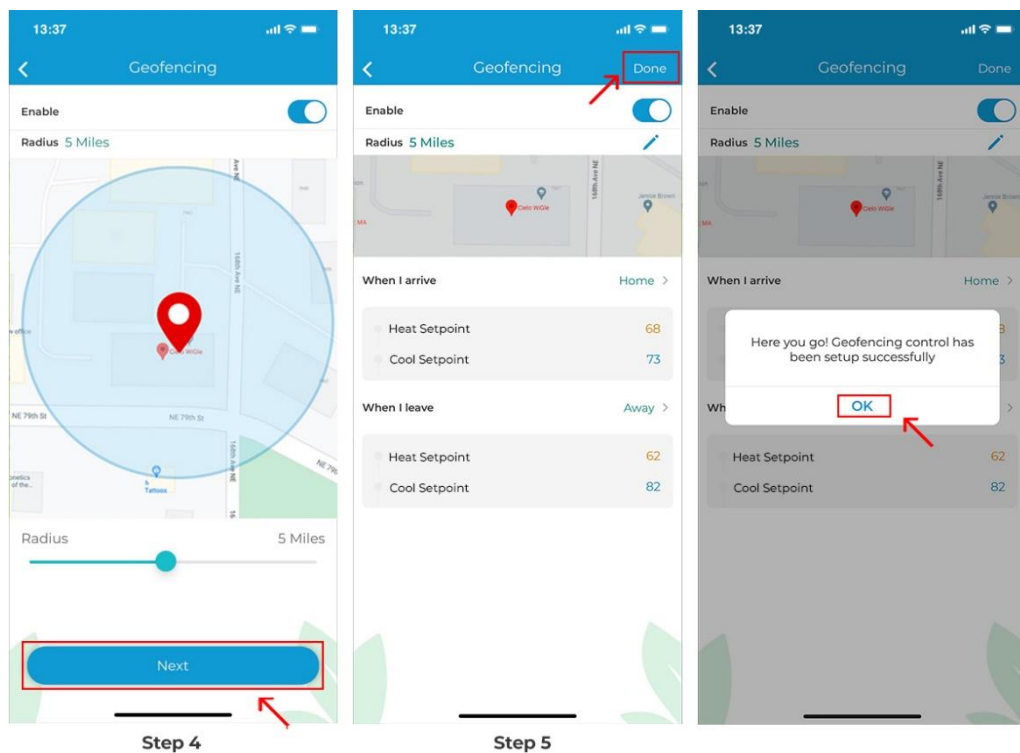
**Step 3:** Toggle the slider to enable Location-Based controls.





**Step 4:** You will see your current location on the map. Set a geofence range between 1 - 10 Miles using the slider. Entering or exiting this range will trigger the Presets. Tap on 'Next'.

**Step 5:** Select the preset you want to set when you enter or exit the location. Tap on 'Done'. Geofencing has been enabled.



## Setting up Vacation Mode

If you're planning to be away for an extended period, Vacation Mode can help you conserve energy while ensuring that your home is comfortable when you return.

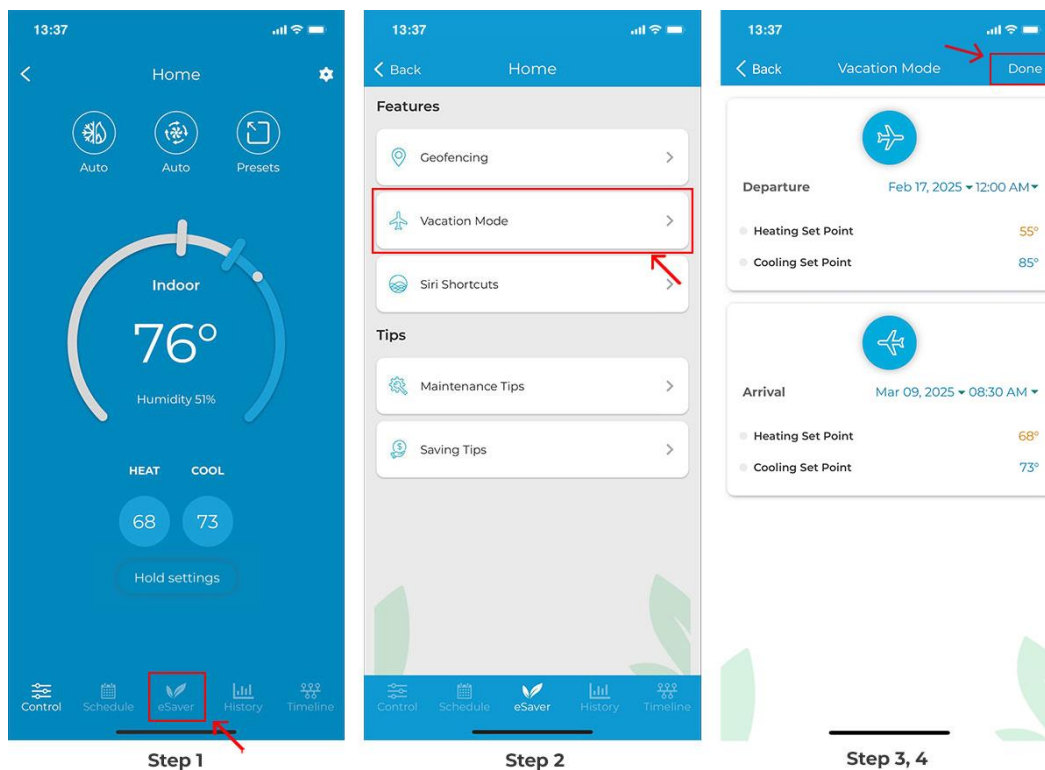
**Step 1:** On the Control screen, Tap on 'e-saver' in the navigation bar.

**Step 2:** Tap on 'Vacation Mode'.

**Step 3:** Set start and end date/time, and set your preferred temperature settings,

**Step 4:** Tap on 'Done'.

Your vacation settings are now saved.

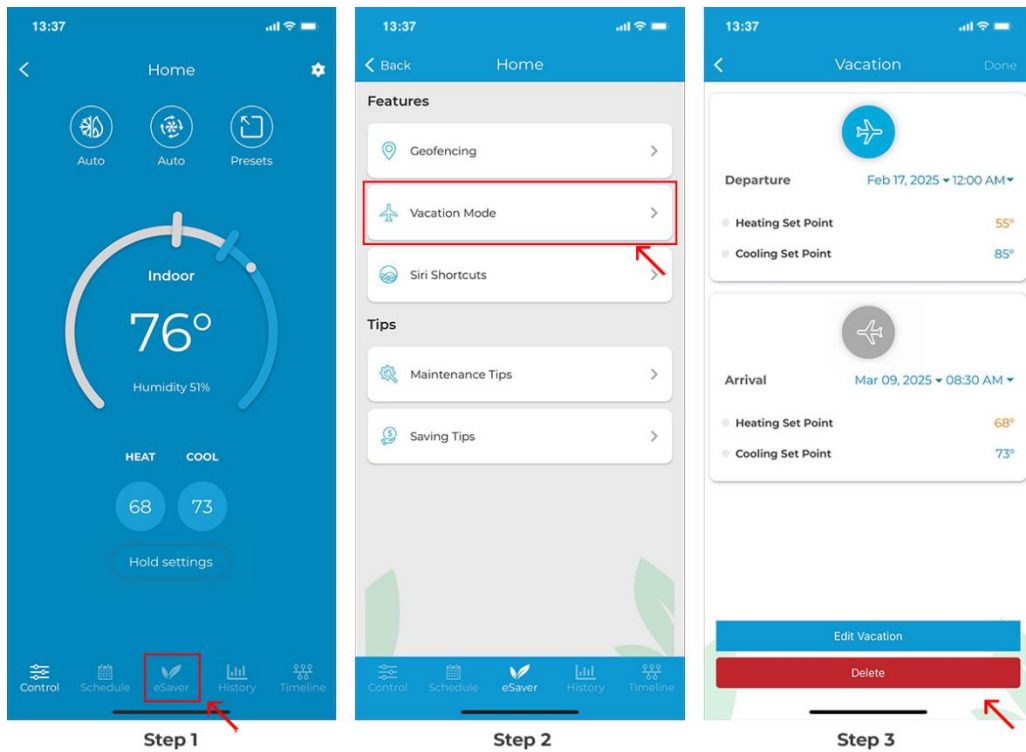


## Editing/Deleting Vacation Mode

**Step 1:** On the Control screen, Tap on 'e-saver' in the navigation bar.

**Step 2:** Tap on 'Vacation Mode'.

**Step 3:** You have the option to edit or delete the vacation at the bottom of the screen.

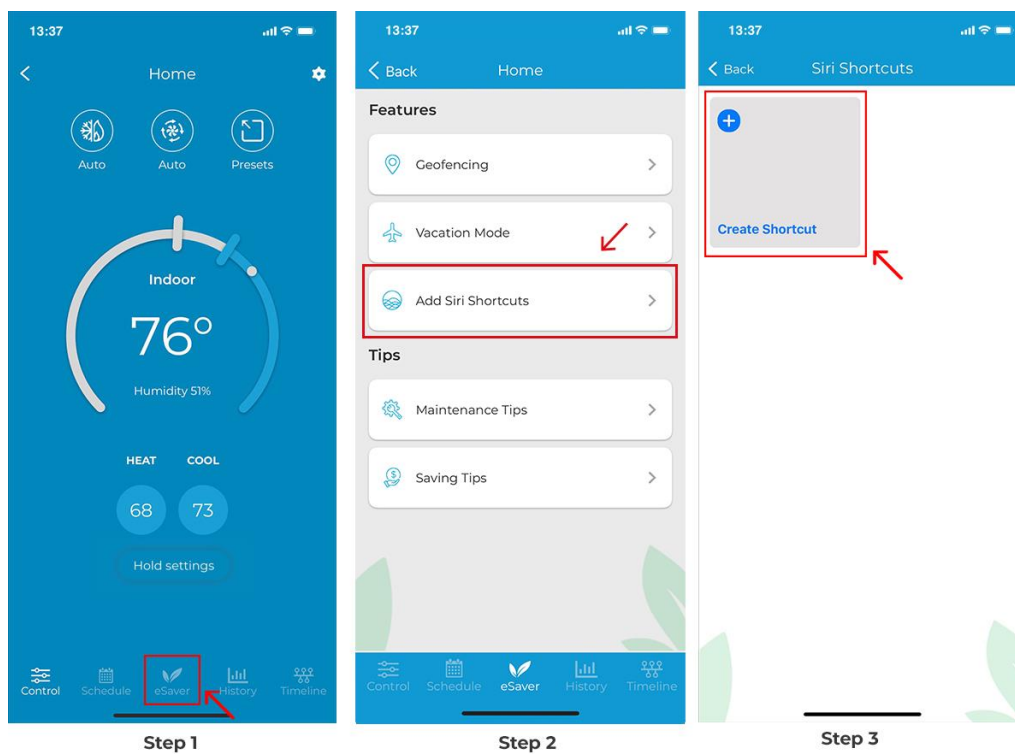


## Adding Siri Shortcuts (For iOS)

**Step 1:** On the Control screen, Tap on 'e-saver' in the navigation bar.

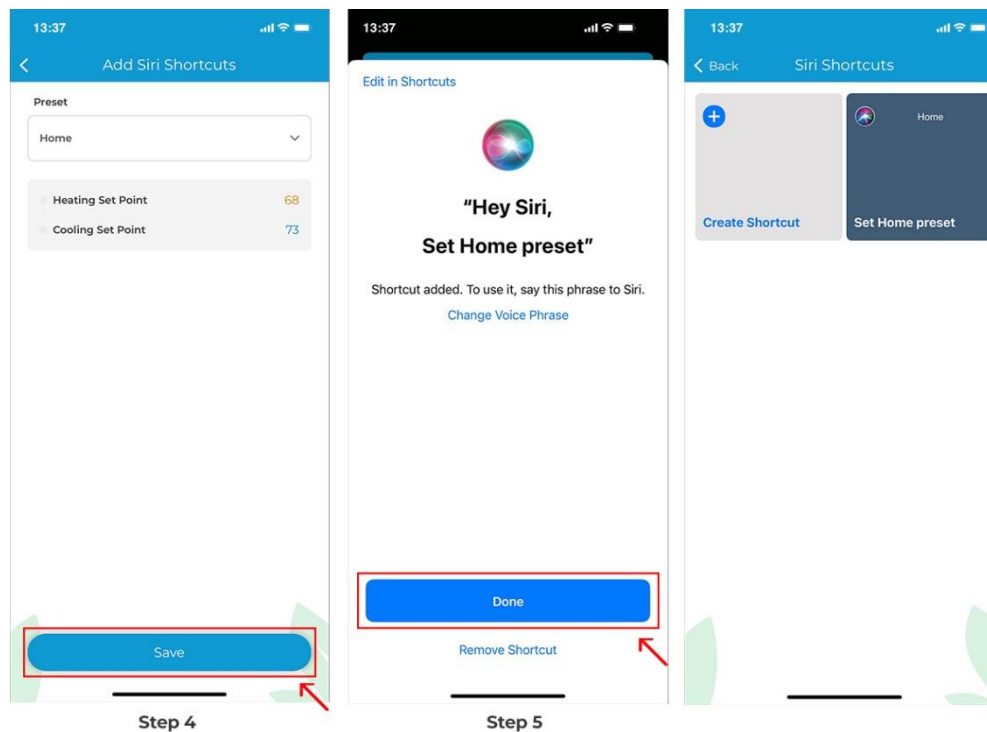
**Step 2:** Tap on 'Siri Shortcuts'.

**Step 3:** Tap on 'Create Shortcut'.



**Step 4:** Choose the Preset you want to add as a shortcut. Tap on 'Save'.

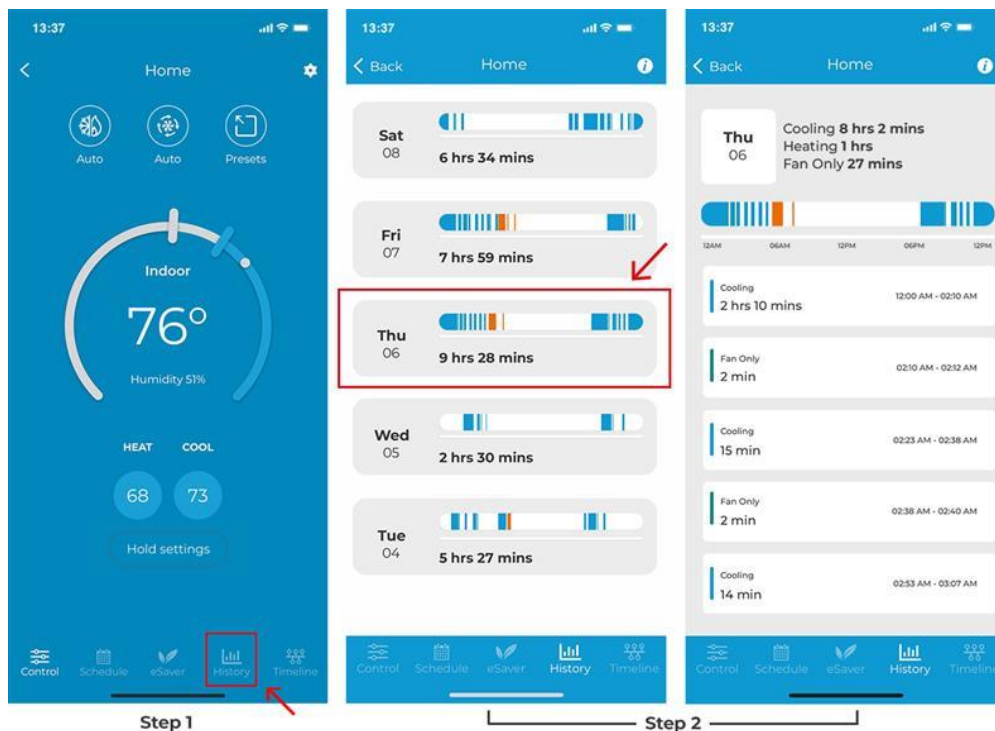
**Step 5:** Next, enter the phrase on which you want the Shortcut to activate. In this example, Set Home Preset'. Tap on 'Done'.



## Checking Usage History

**Step 1:** On the Control screen, Tap on 'History'.

**Step 2:** Your last 30-day usage summary should appear on the screen. Tap on any day to learn more details about your detailed usage history.



Below is the color legend for the detailed usage statistics:

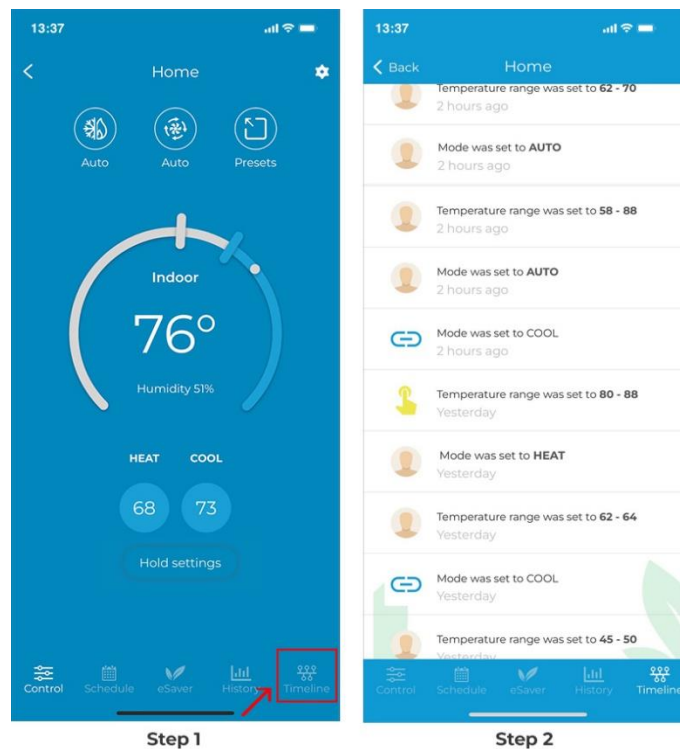


## Checking Timeline of Actions

Timeline of Actions provides details of all the changes happening on your unit, including actions performed through the app or over voice commands.

**Step 1:** On the Control screen, Tap on 'Timeline'.

**Step 2:** You'll see a complete list of actions performed over the last 60 days.



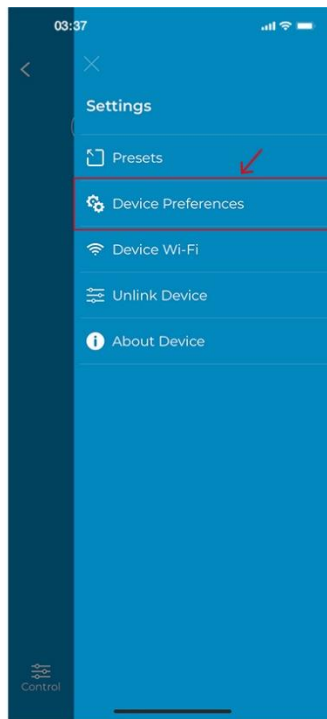
## Changing Device Name

**Step 1:** On the Control Screen, tap on the 'Settings' icon at the top right corner.

**Step 2:** Tap on 'Device Preferences'.



Step 1

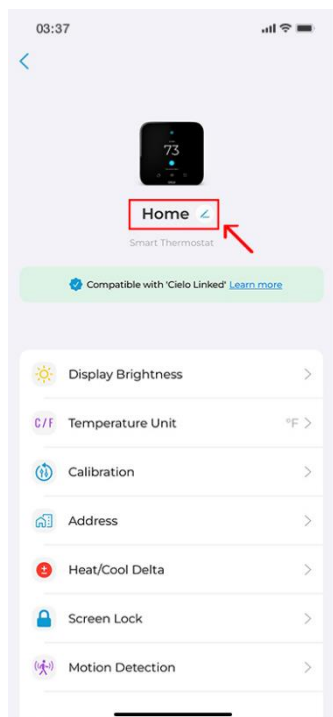


Step 2

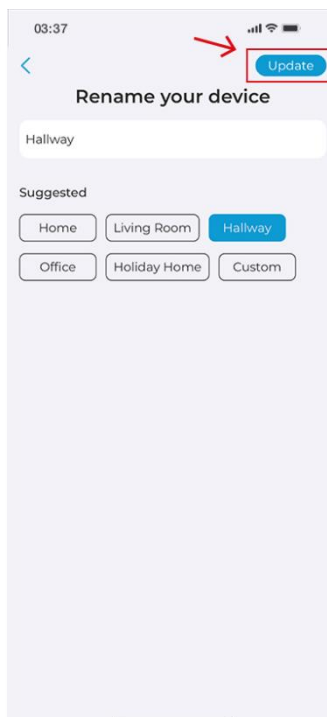
**Step 3:** Tap the pencil icon in front of the name.

**Step 4:** Select a new name from the list of suggested names, or select 'Custom' to enter a name of your choice. Tap on 'Update.'

The device name is now changed.



Step 3

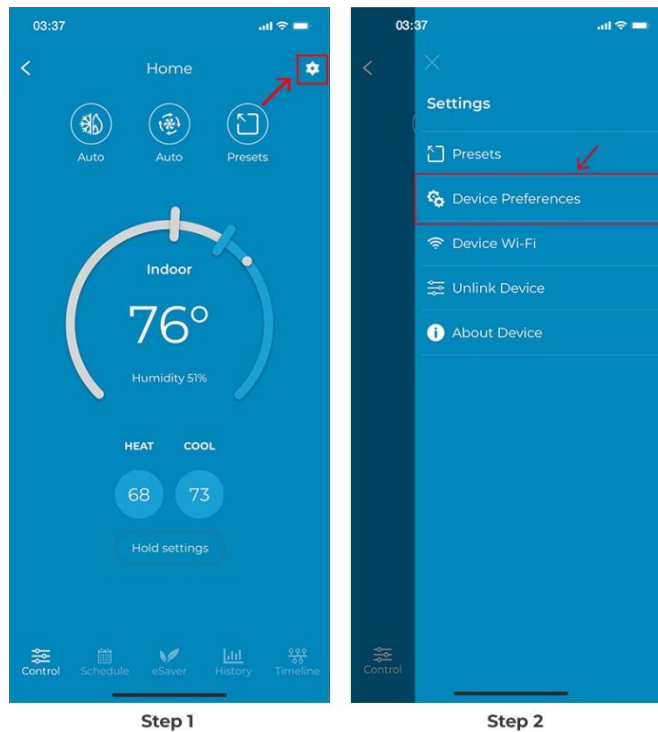


Step 4

## Changing the Brightness

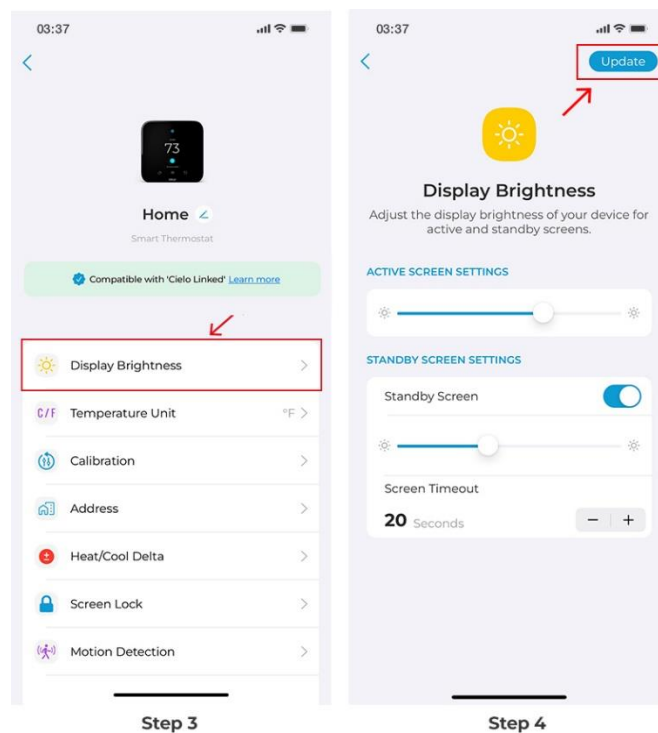
**Step 1:** Go to settings by tapping the 'Settings' icon on the control screen.

**Step 2:** Tap on 'Device Preferences'.



**Step 3:** Tap on 'Display Brightness'.

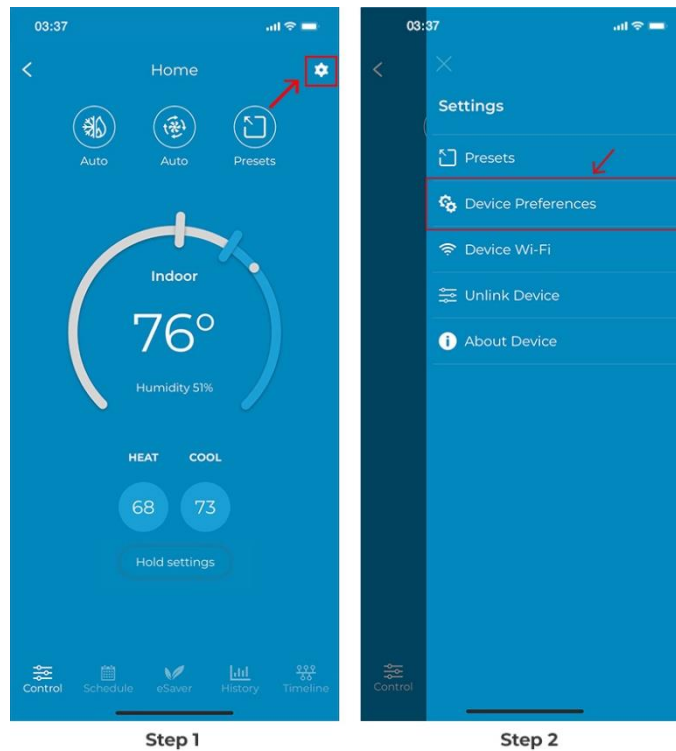
**Step 4:** Use the slider to adjust the active screen brightness. You can also adjust the standby screen settings and screen timeout.



## Switch Temperature Units Between Centigrade and Fahrenheit

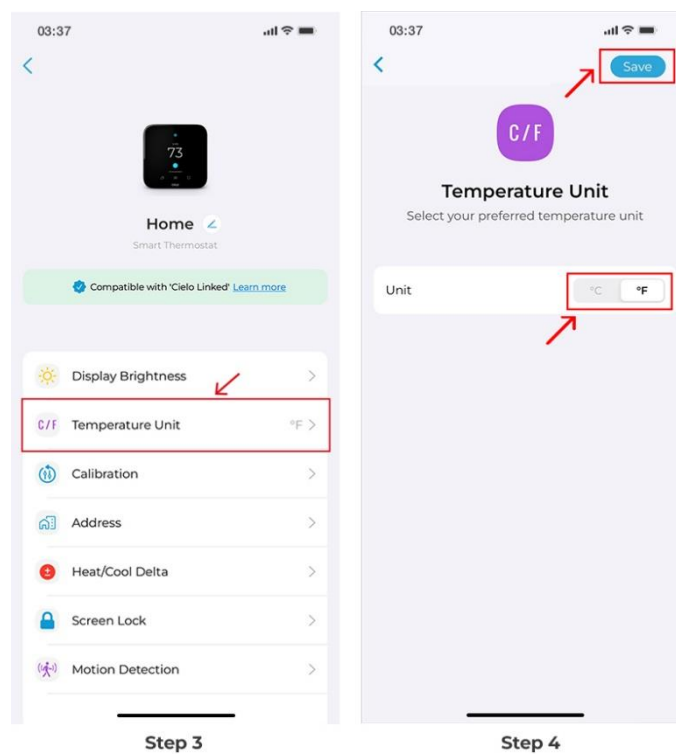
**Step 1:** Go to settings by tapping the Settings icon on the control screen.

**Step 2:** Tap on 'Device Preferences.'



**Step 3:** Tap on the C to F toggle against 'Temperature Unit.'

**Step 4:** Your device's temperature units have been changed successfully from Fahrenheit to Celsius.



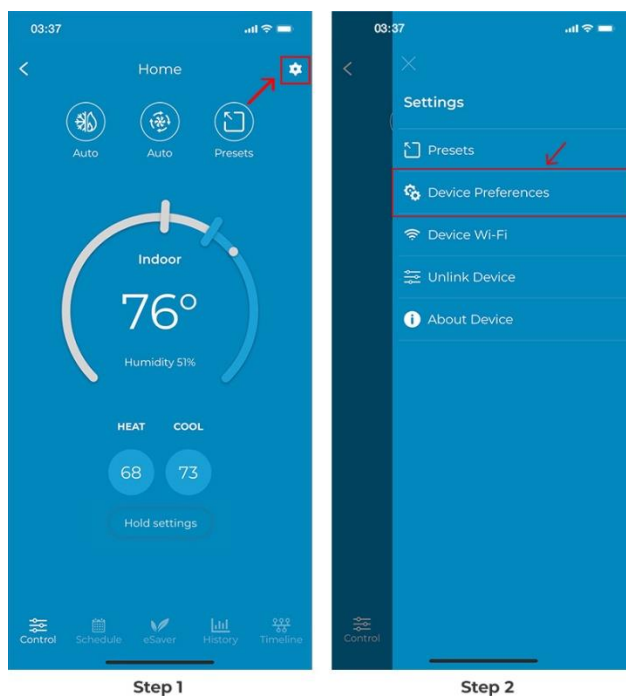


## Calibrate Indoor Temperature

Temperature calibration helps correct inaccuracies caused by differences between the ambient temperature near your thermostat and the rest of your home.

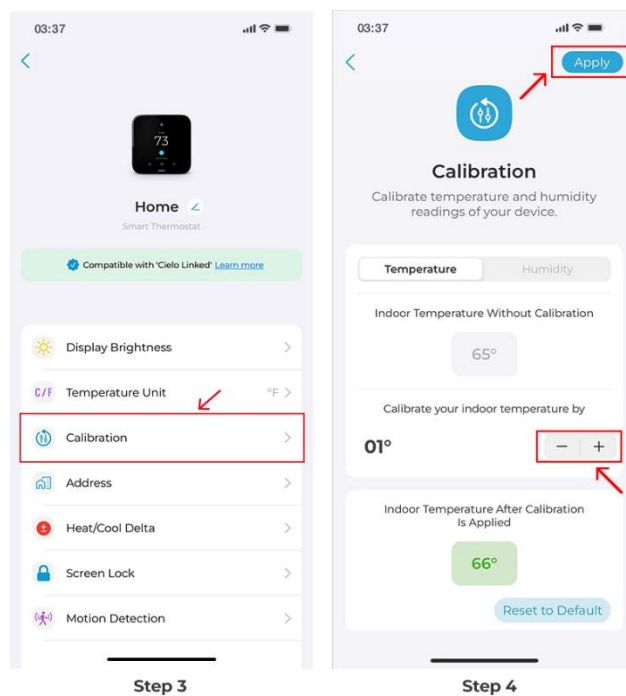
**Step 1:** On the Control Screen, tap on the 'Settings' icon at the top right corner.

**Step 2:** Tap on 'Device Preferences.'



**Step 3:** Tap on 'Calibration.'

**Step 4:** Calibrate temperature by tapping the + or - sign. Tap on 'Save'.'

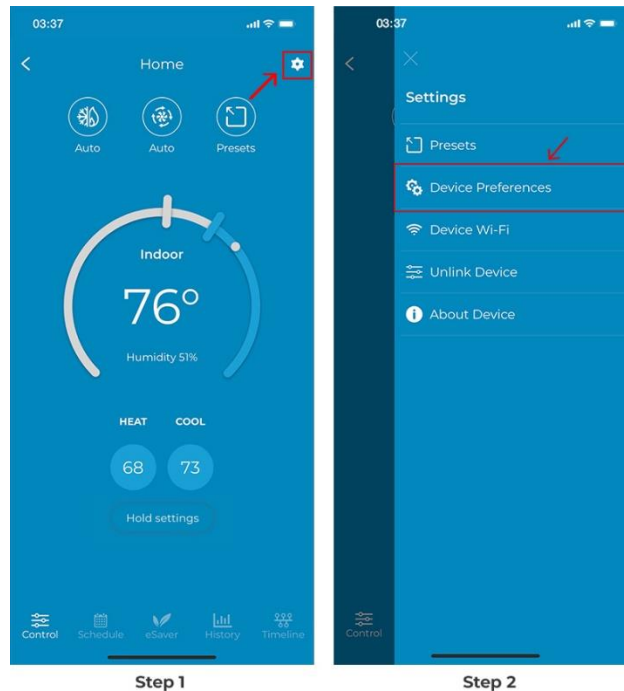


## Calibrate Indoor Humidity

Humidity calibration helps correct inaccuracies caused by differences between the humidity levels near your thermostat and the rest of your home.

**Step 1:** On the Control Screen, tap on the 'Settings' icon at the top right corner.

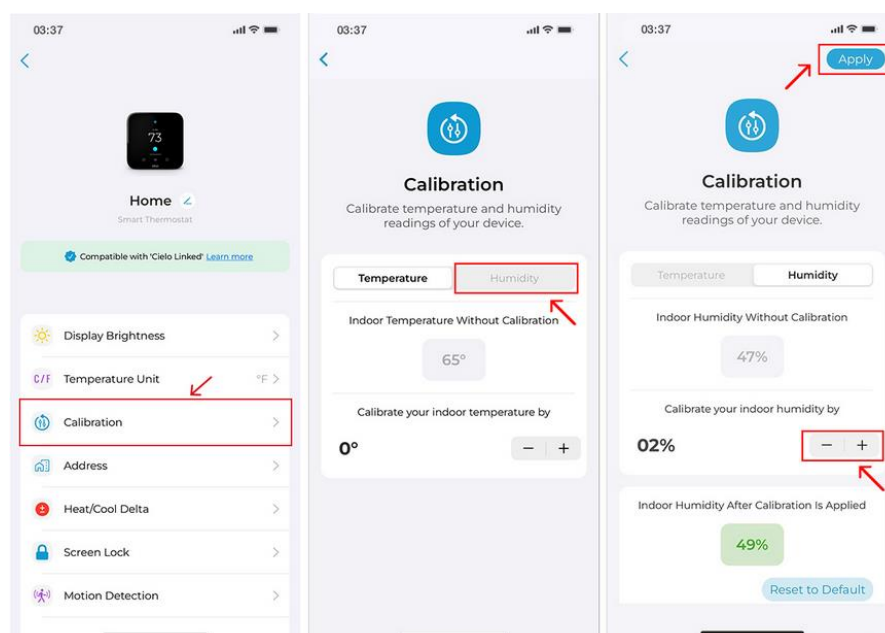
**Step 2:** Tap on 'Device Preferences'.



**Step 3:** Tap on 'Calibration.'

**Step 4:** Tap on 'Humidity.'

**Step 5:** Calibrate humidity by tapping the + or - sign. Tap on 'Save.'

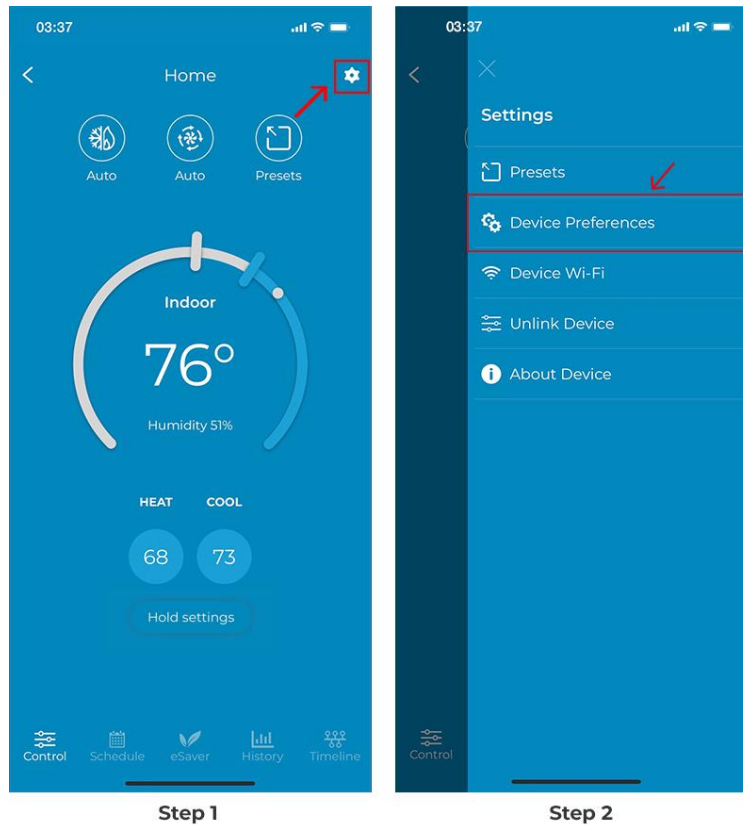


## Adding Address

Add your address to sync weather data. This will allow you to use exciting features like integrated controls (set-up automation based on outdoor temperature).

**Step 1:** On the Control Screen, tap on the 'Settings' icon at the top right corner.

**Step 2:** Tap on 'Device Preferences.'

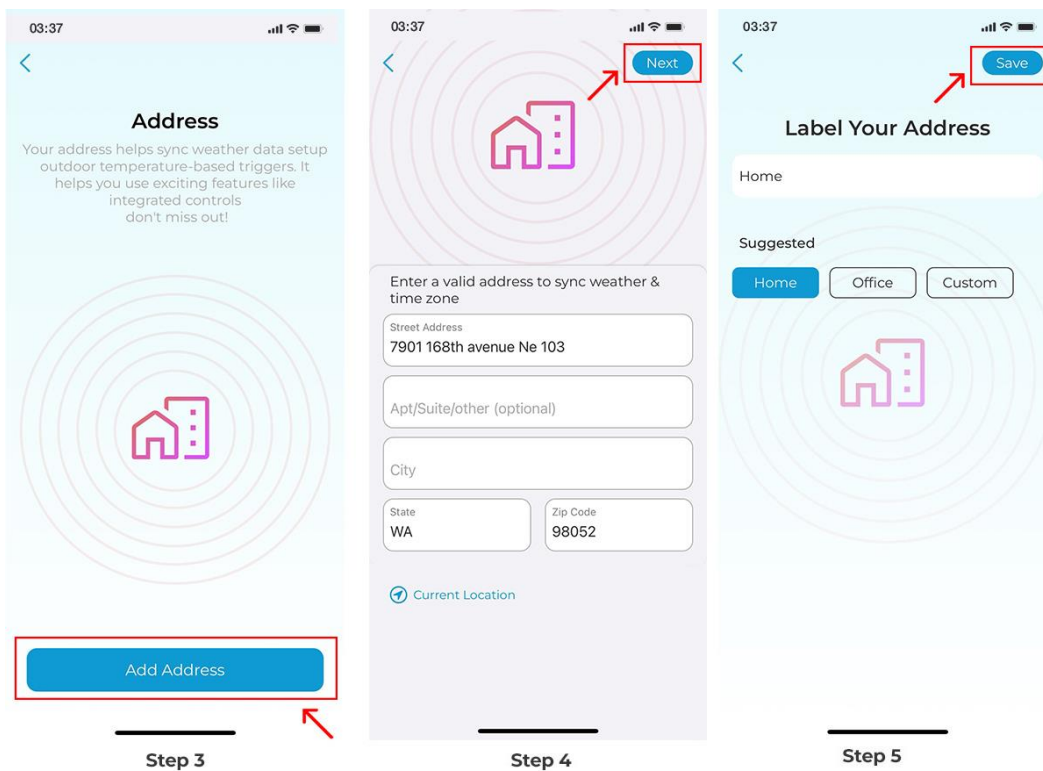


**Step 3:** Tap on 'Add Address.'

**Step 4:** Enter your address details and tap on 'Next.'

**Step 5:** Pick a label or add a custom address, and tap on 'Save.'

You have successfully added the address.

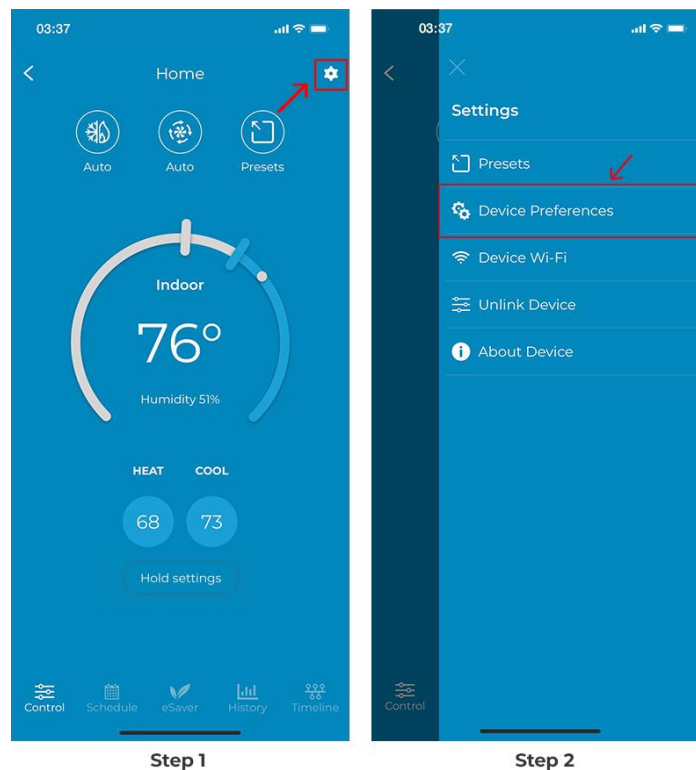


## Set Heat/Cool Delta

Set your desired minimum heating and cooling temperature difference in Auto mode.

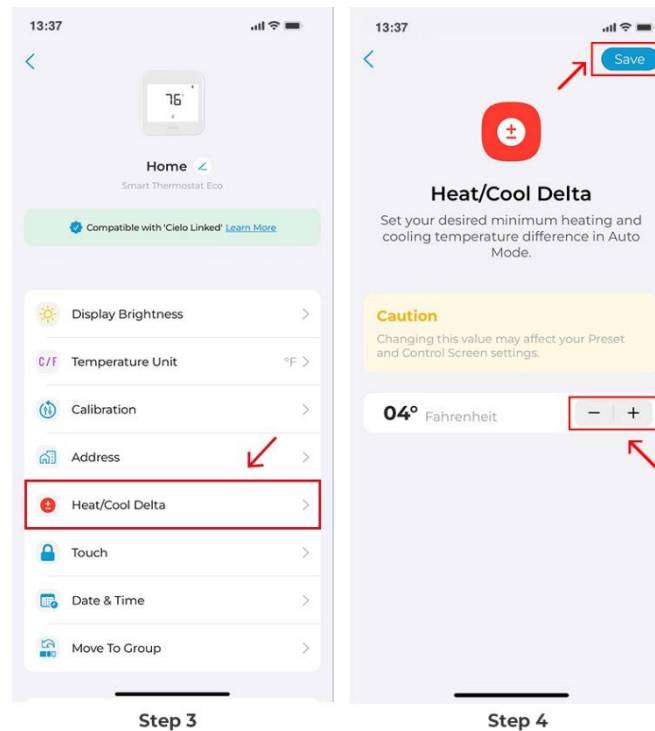
**Step 1:** On the Control Screen, tap on the 'Settings' icon at the top right corner.

**Step 2:** Tap on 'Device Preferences.'



**Step 3:** Tap on 'Heat/Cool/Delta.'

**Step 4:** Use the + or - sign to adjust your preferred temperature difference. Tap on 'Save.'

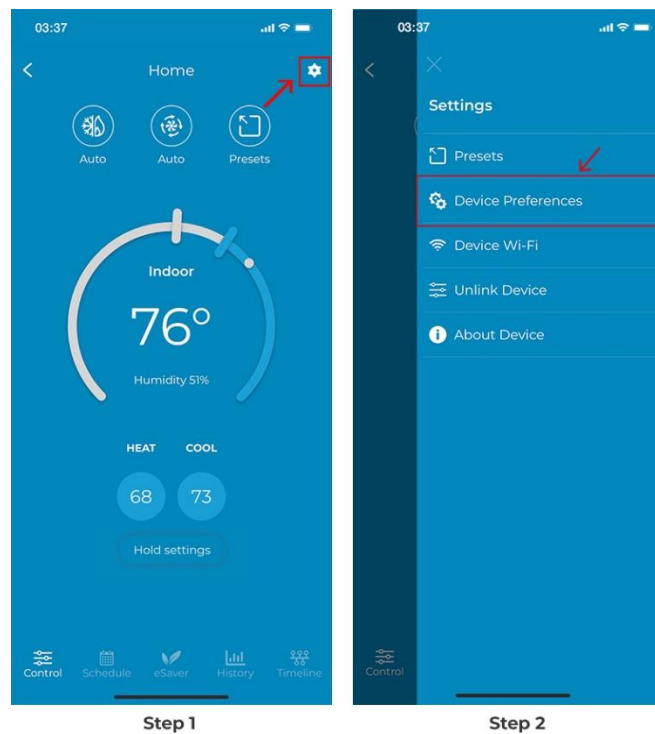


## Locking Your Thermostat

You can easily lock your thermostat to prevent unwanted changes.

**Step 1:** On the Control Screen, tap on the 'Settings' icon at the top right corner.

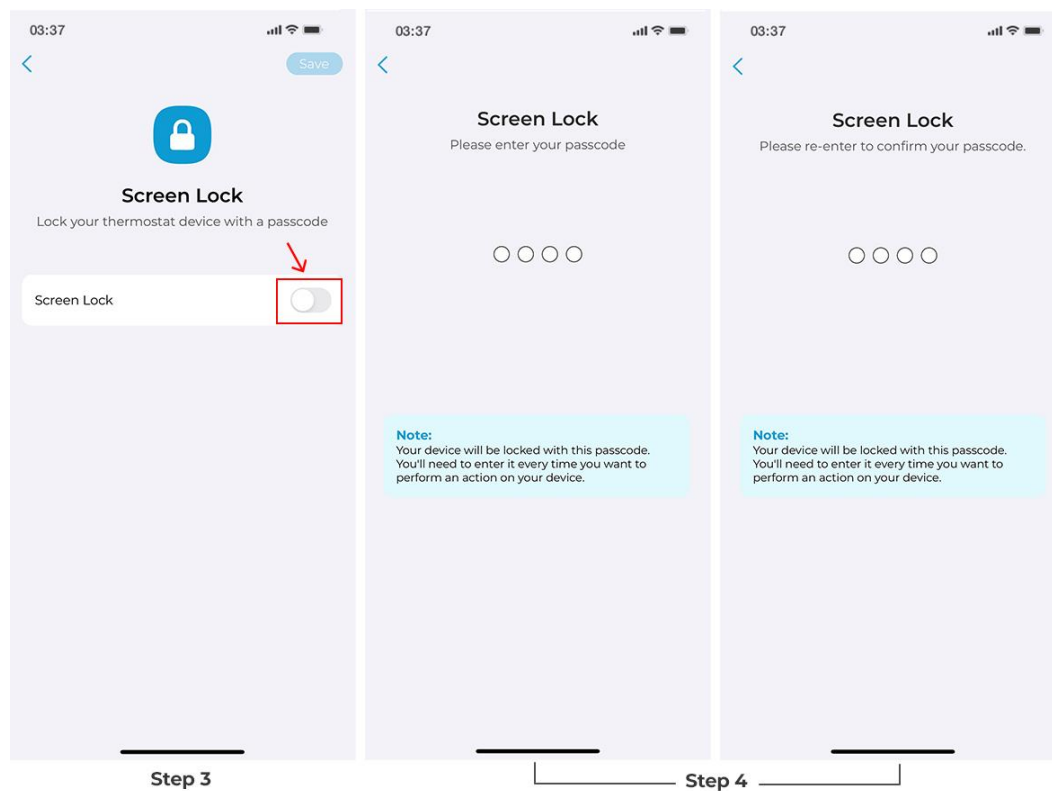
**Step 2:** Tap on 'Device Preferences.'



**Step 3:** Toggle the screen lock button to set your passcode.

**Step 4:** Enter your passcode. Re-enter to confirm the passcode.

Your thermostat screen will be locked. You can unlock it using this passcode.



## Motion Detection

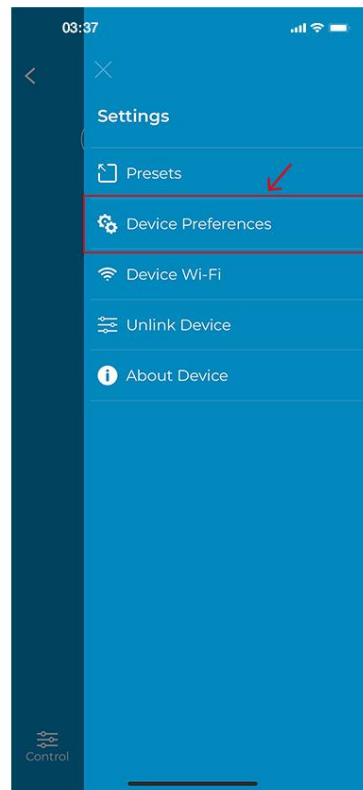
Your thermostat can automatically detect your presence and activate the control screen. You can also set it up to switch from Away to Home settings when motion is detected.

**Step 1:** On the Control Screen, tap on the 'Settings' icon at the top right corner.

**Step 2:** Tap on 'Device Preferences'.



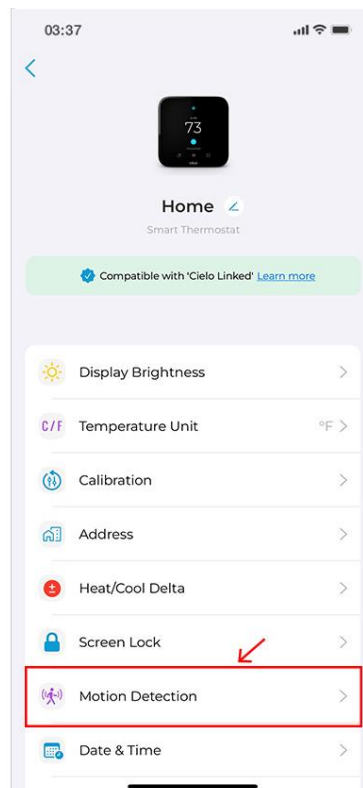
Step 1



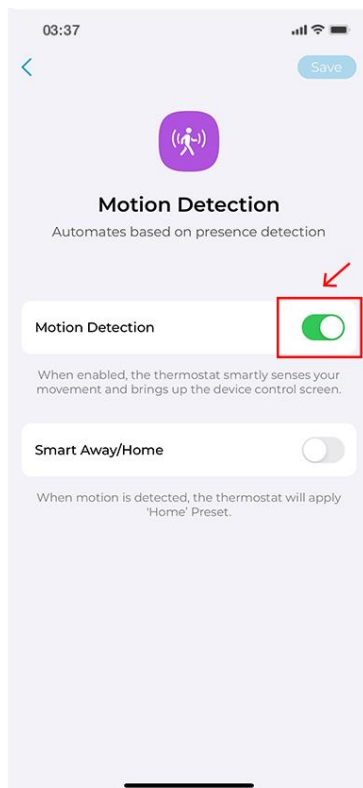
Step 2

**Step 3:** Tap on 'Motion Detection.'

**Step 4:** Toggle the button to turn on motion detection.



Step 3

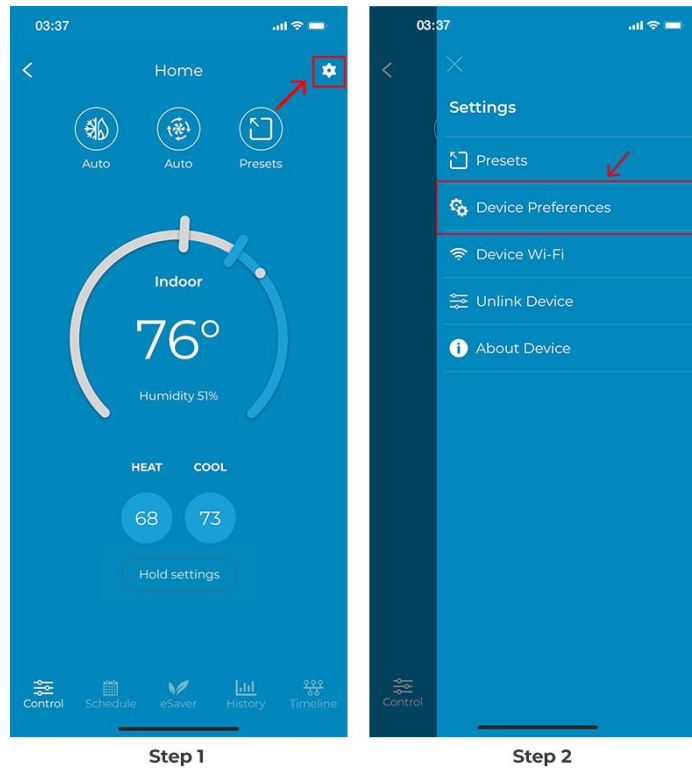


Step 4

## Changing Time Format

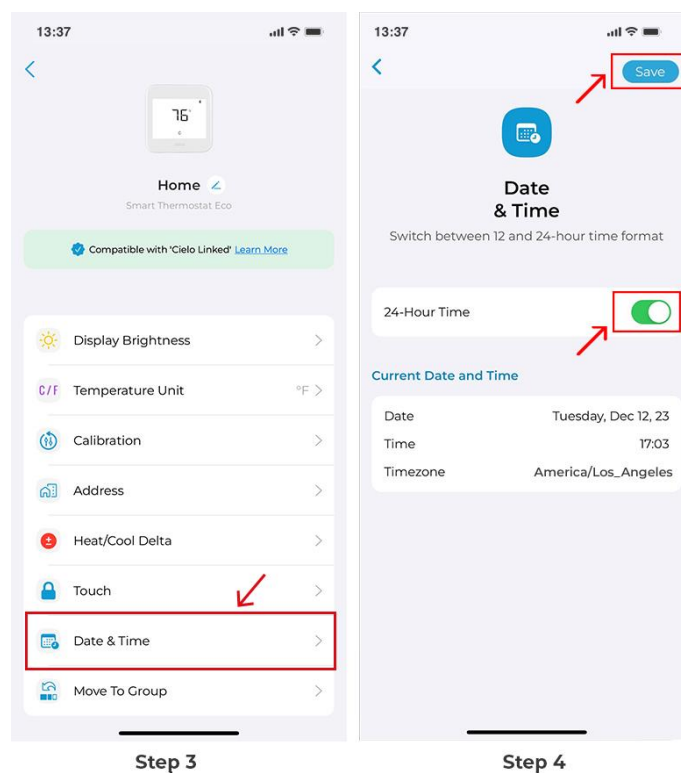
**Step 1:** On the Control Screen, tap on the 'Settings' icon at the top right corner.

**Step 2:** Tap on 'Device Preferences.'



**Step 3:** Tap on 'Date & Time.'

**Step 4:** Use the toggle to change the time format between 12 to 24 hours and vice versa. Tap on 'Save.'





## Move to Group

A group will allow you to control all your registered devices together with a simple tap.

### 1. Creating a group

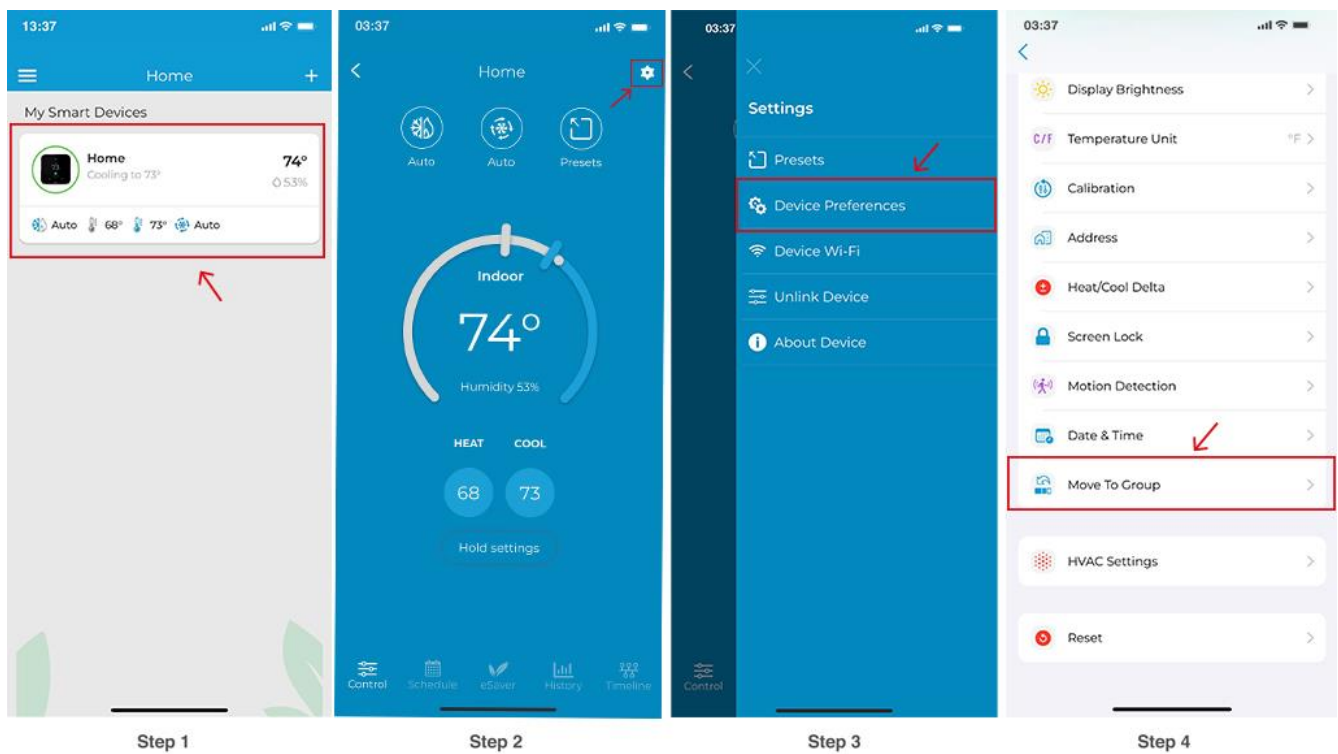
To create a Group in Cielo Home app, follow these steps:

**Step 1:** On the Home screen, tap on your Cielo Smart Thermostat.

**Step 2:** Tap on the 'Settings' icon on the top right.

**Step 3:** Tap on 'Device Preferences'.

**Step 4:** Tap on 'Move to Group'.

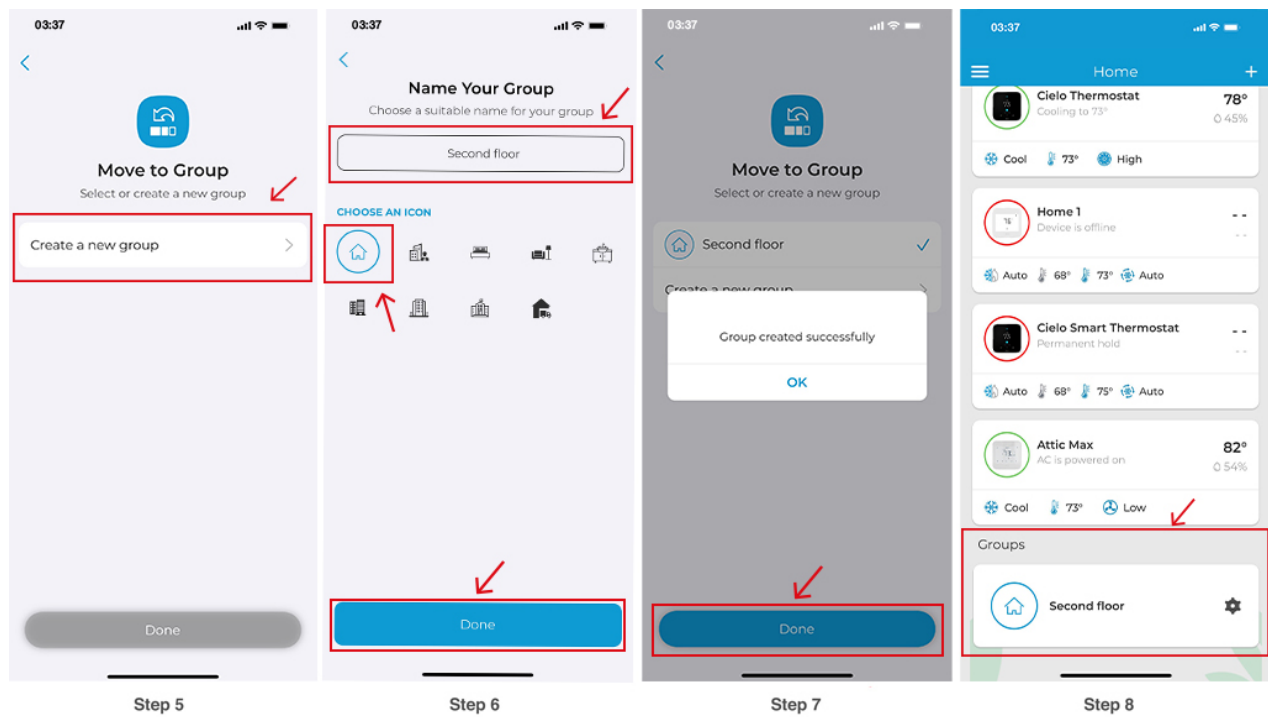


**Step 5:** Tap on 'Create a new group.'

**Step 6:** Give your group a name (e.g. First Floor, Second Floor, etc.) and choose an icon. Tap on 'Done.'

**Step 7:** Group is created successfully, and your device has been successfully moved to the group.

**Step 8:** On the Home screen, you will see a separate 'Groups' tab where you can see your groups along with their devices.



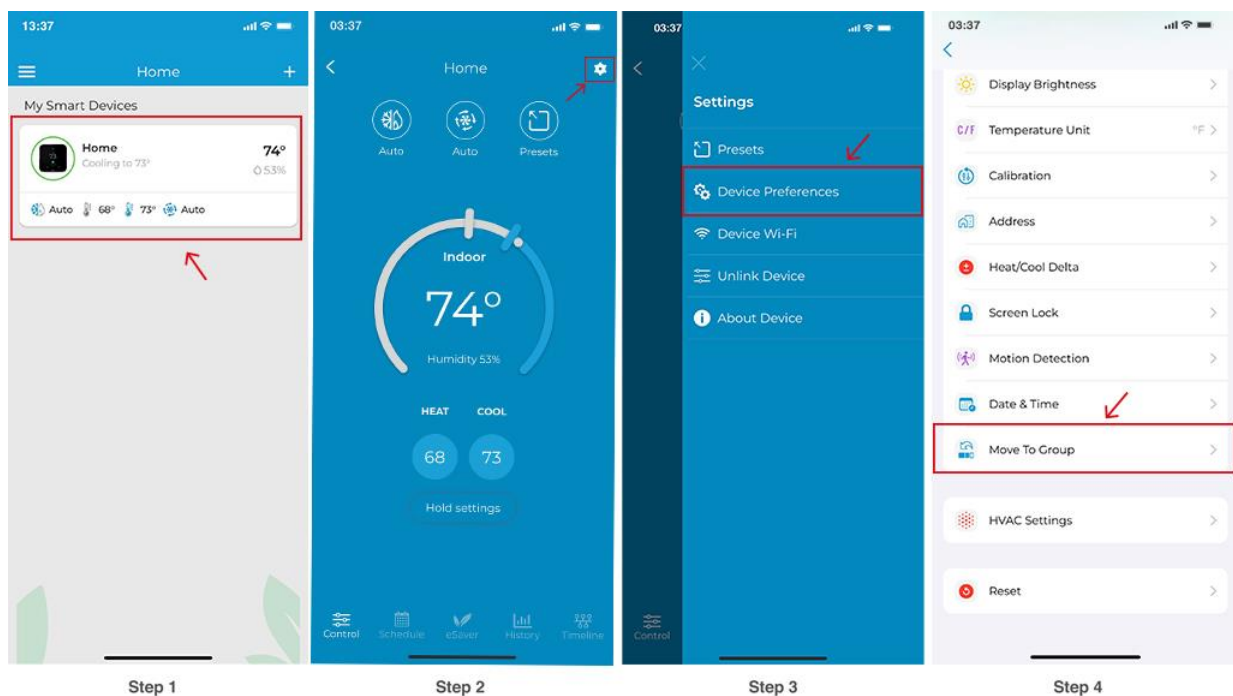
## 2. Adding a Device to a Group

**Step 1:** On the Home screen, tap on your Cielo Smart Thermostat.

**Step 2:** Tap on the 'Settings' icon on the top right.

**Step 3:** Tap on 'Device Preferences.'

**Step 4:** Tap on 'Move to Group.' Your device has successfully moved to the group.

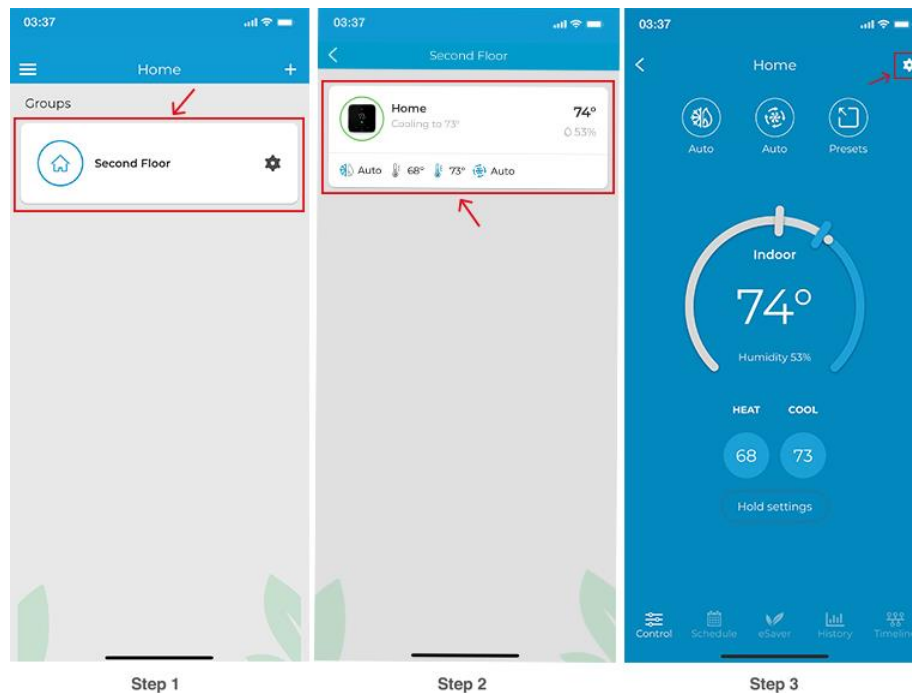


### 3. Removing a Device from a group

**Step 1:** On the Home Screen, go to the 'Groups' section at the bottom and select your created group.

**Step 2:** Tap on the device you want to remove from your group.

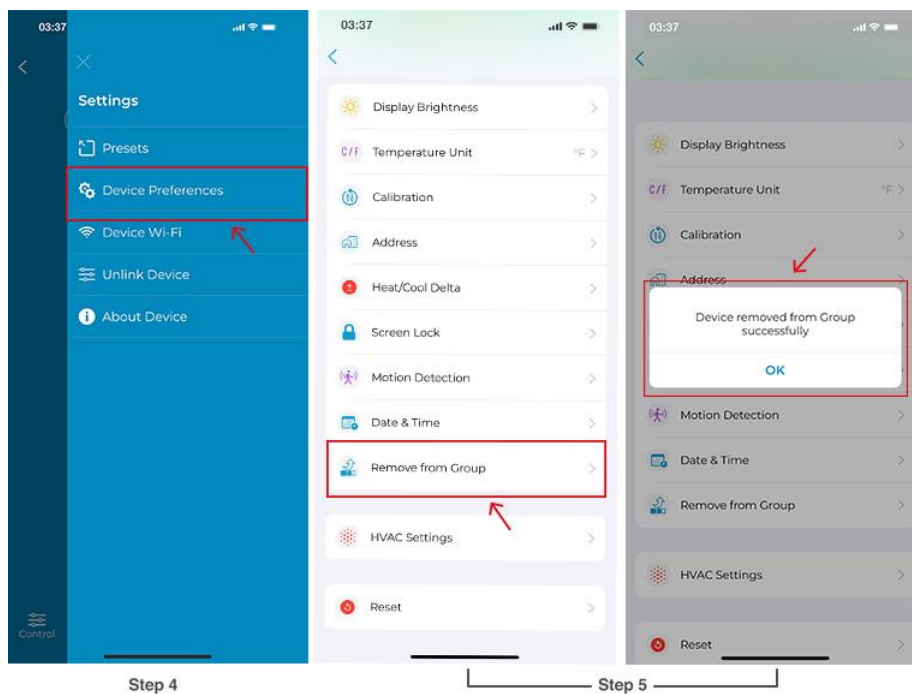
**Step 3:** Go to the 'Settings' on the top right.



**Step 4:** Tap on 'Device Preferences.'

**Step 5:** Tap on 'Remove.'

Device removed from the group successfully.

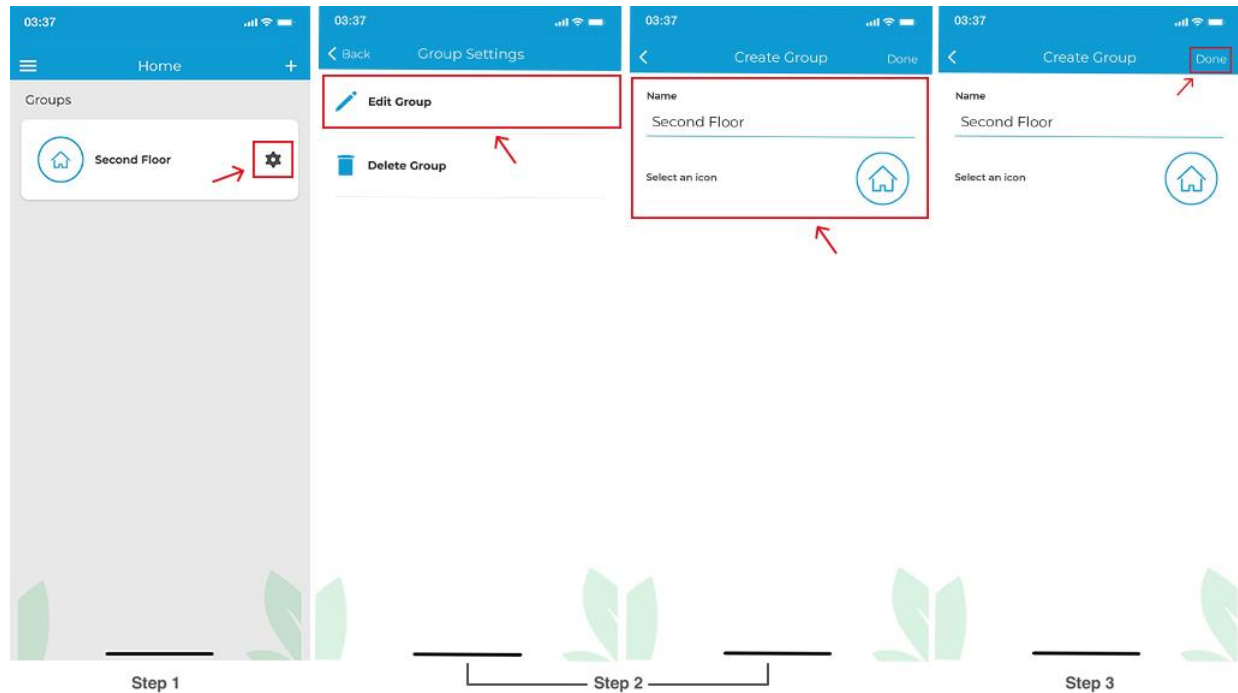


## 4. Editing a Group

**Step 1:** Tap on the 'Settings' icon of the group you wish to edit.

**Step 2:** In group settings, tap on 'Edit Group'. You can change the icon and name of the group as you desire.

**Step 3:** Tap on 'Done.'

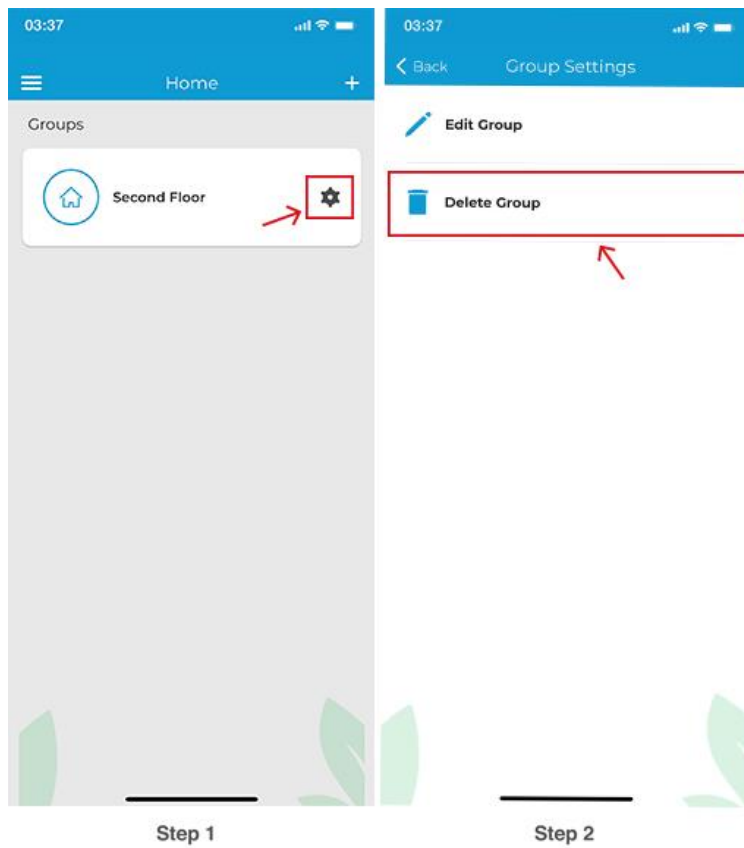


## 5. Deleting a Group

**Note:** To delete a group, you have to remove all the devices added to it individually. You may not be allowed to delete a group otherwise. To delete a device from a group, refer to Section 3.

**Step 1:** Tap on the 'Settings' icon of the group you wish to edit.

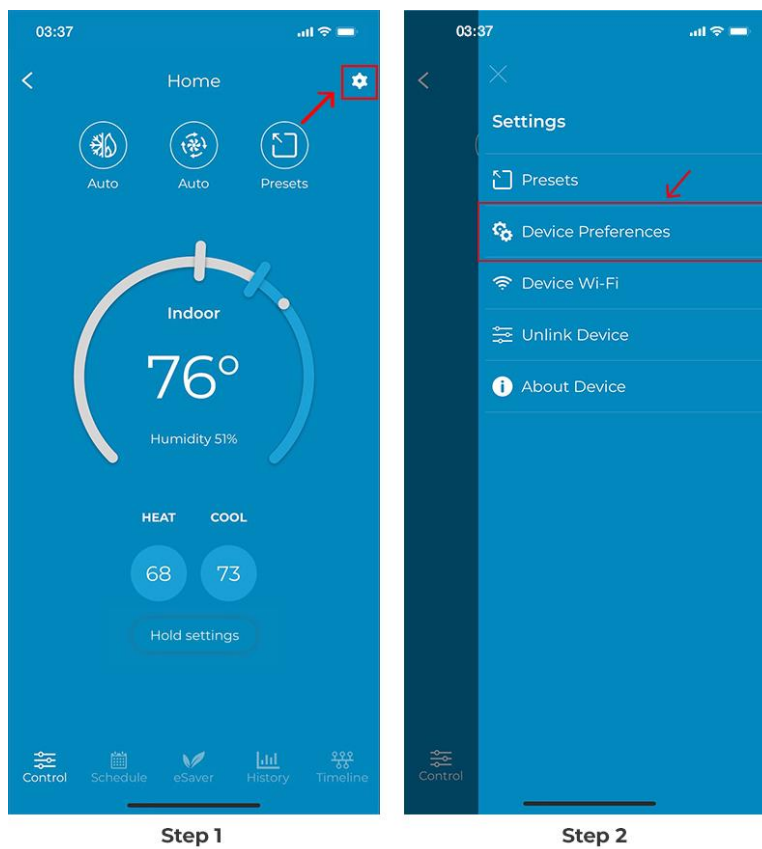
**Step 2:** In group settings, tap on 'Delete Group.'



## Checking Your Currently Configured HVAC Equipment

**Step 1:** On the Control Screen, tap on the 'Settings' icon at the top right corner.

**Step 2:** Tap on 'Device Preferences.'

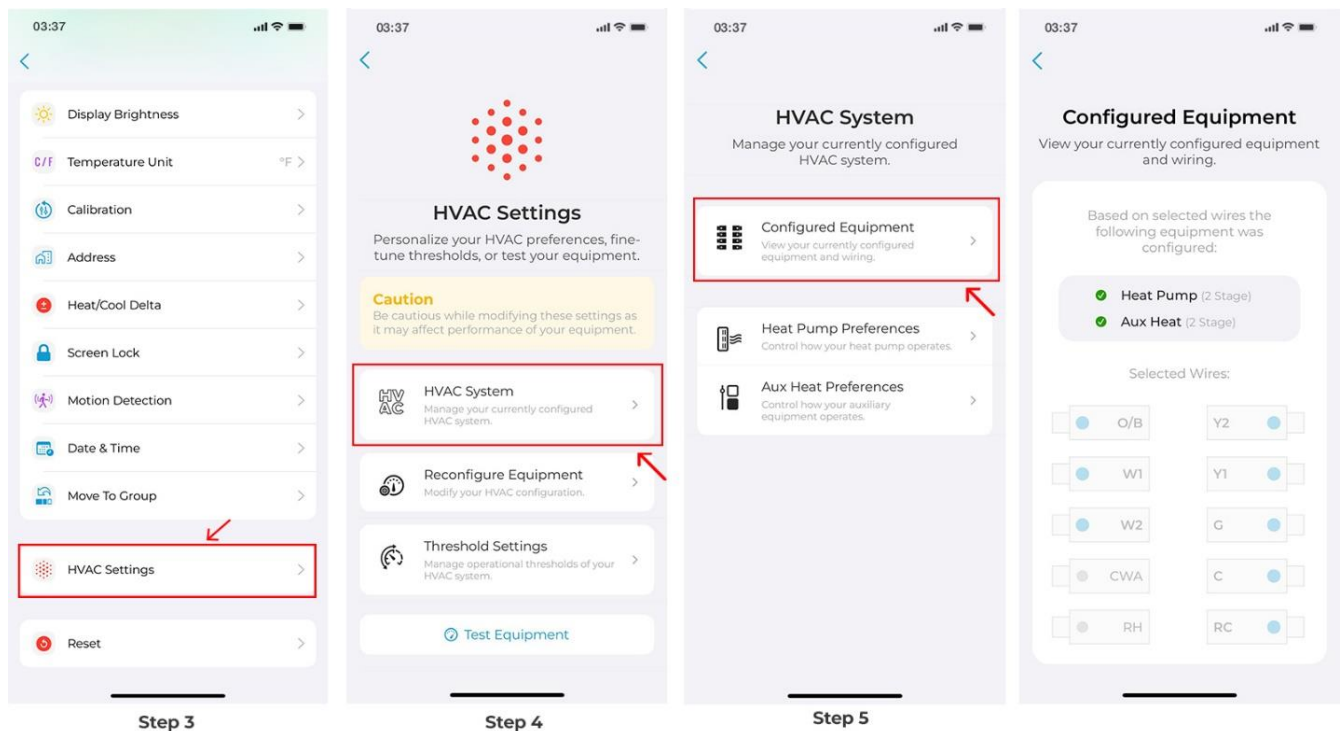


**Step 3:** Tap on 'HVAC Settings.'

**Step 4:** Tap on 'HVAC System.'

**Step 5:** Tap on 'Configured Equipment.'

You can check your currently configured HVAC equipment.



## Changing Your Equipment's Preferences

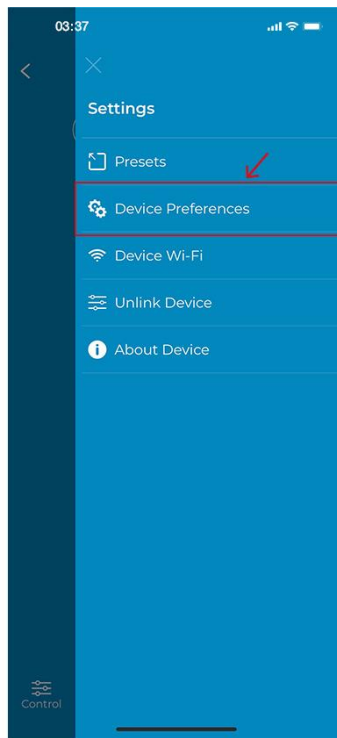
**Step 1:** On the Control Screen, tap on the 'Settings' icon at the top right corner.

**Step 2:** Tap on 'Device Preferences.'

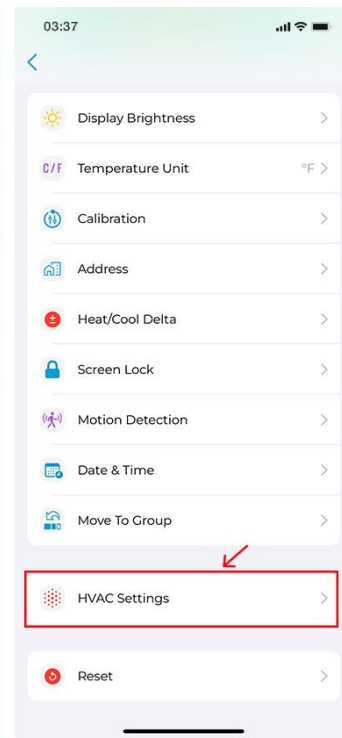
**Step 3:** Tap on 'HVAC Settings.'



Step 1



Step 2

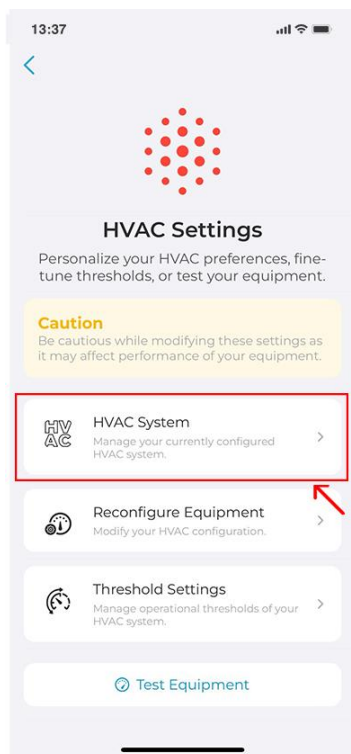


Step 3

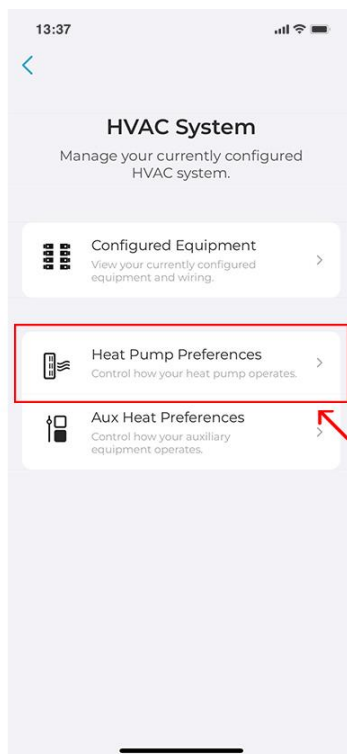
**Step 4:** Tap on 'HVAC System.'

**Step 5:** You'll see your configured equipment preferences here. In this case, heat pump & Aux. Select the equipment you want to change the preferences of.

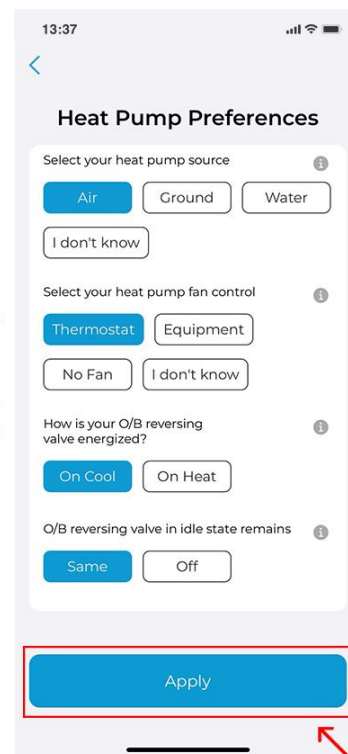
**Step 6:** Make your desired changes and tap on 'Apply.' (Tap on the tooltip to learn about these settings)



Step 4



Step 5



Step 6

## Changing Your Currently Configured HVAC Equipment

**Step 1:** On the Control Screen, tap on the 'Settings' icon at the top right corner.

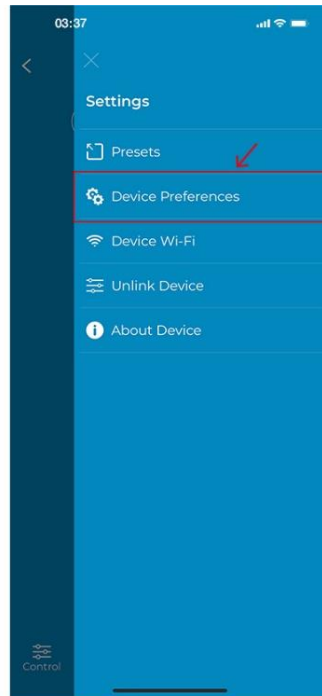
**Step 2:** Tap on 'Device Preferences.'

**Step 3:** Tap on 'HVAC Settings.'

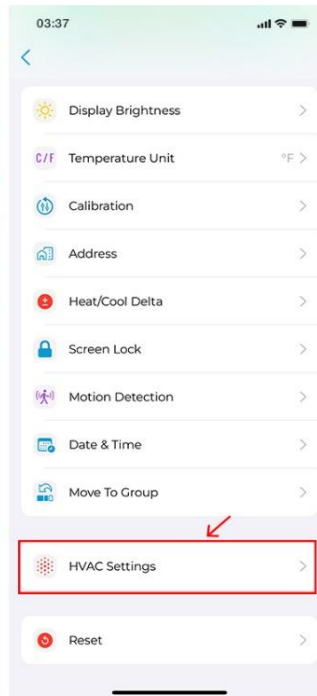
**Step 4:** Tap on 'Reconfigure Equipment.'



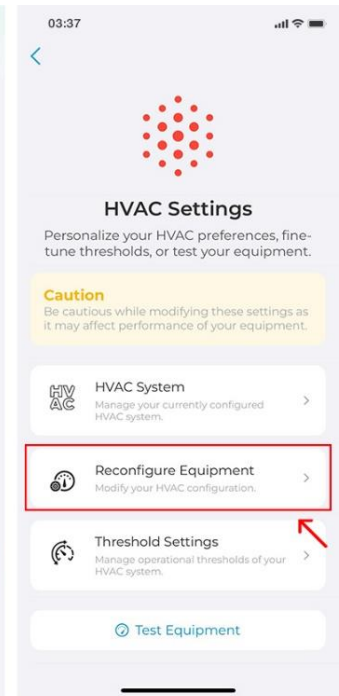
Step 1



Step 2



Step 3



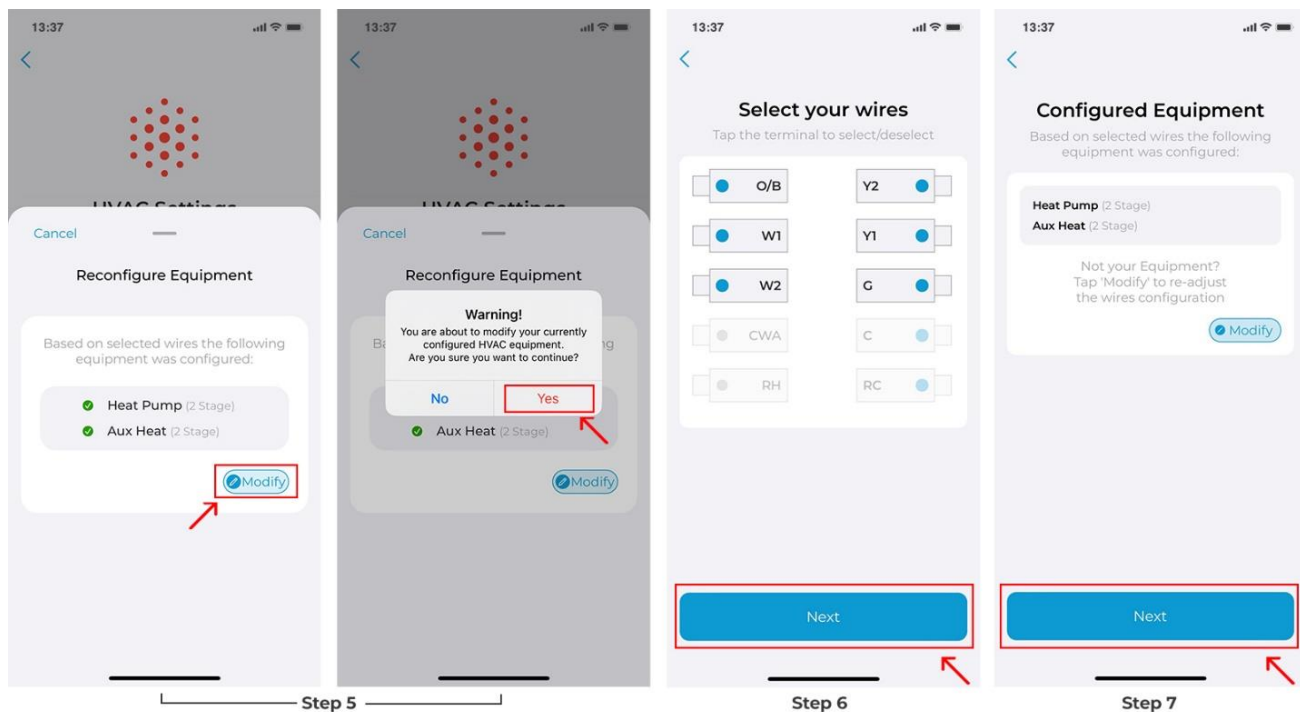
Step 4

**Step 5:** Tap on 'Modify' and select 'Yes.'

**Step 6:** Select the terminals that have wires connected to them. Then tap 'Next.'

**Step 7:** You will see your newly configured HVAC equipment. Tap 'Next.'



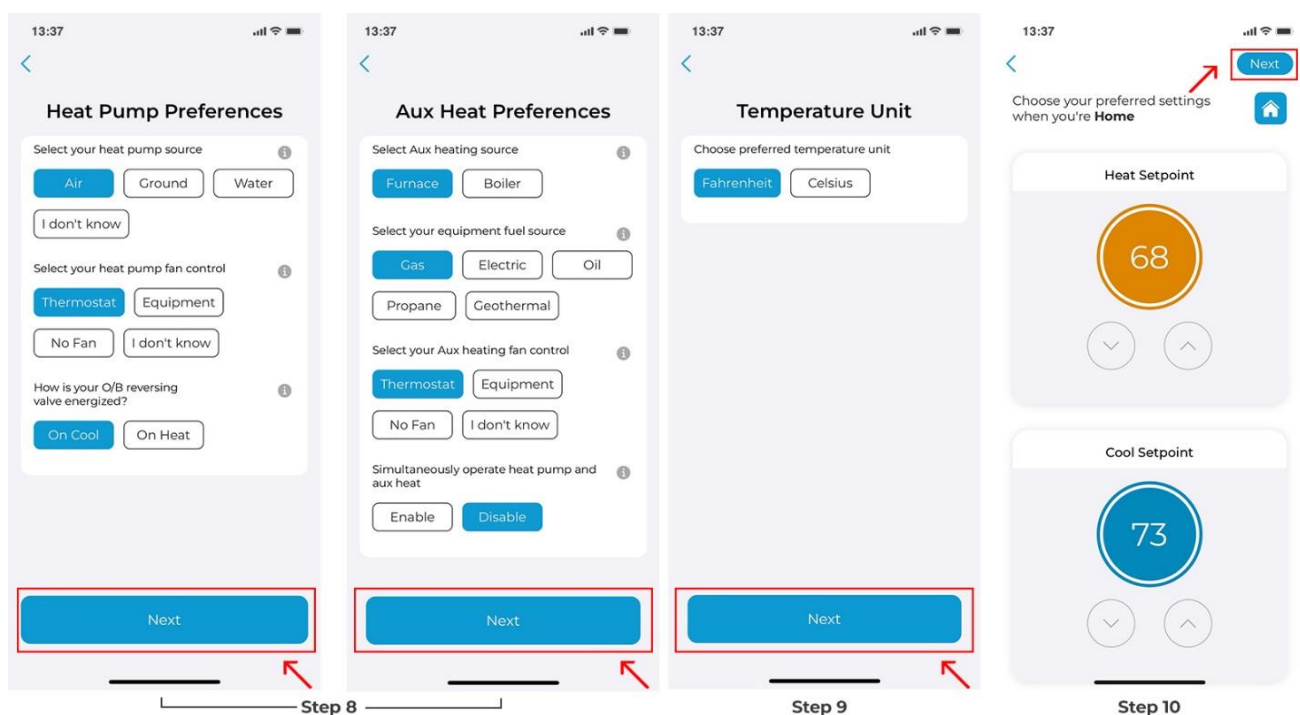


**Step 8:** Based on your wire selection, this step requires you to select your heating source and determine how you want your system to work. Tap on 'Next' after you have configured these settings.

**Step 9:** Choose your preferred temperature unit and tap 'Next.'

**Step 10:** Personalize your desired comfort settings for Home, Away, or Sleep.

Your new HVAC equipment is now configured.

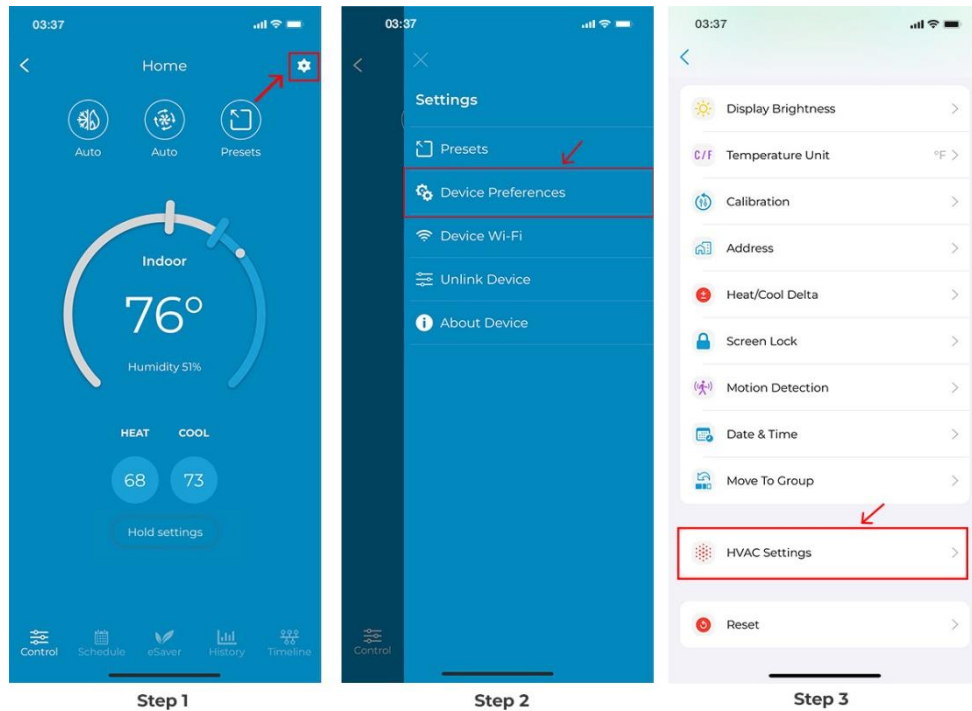


## Changing Threshold Settings

**Step 1:** On the Control Screen, tap on the 'Settings' icon at the top right corner.

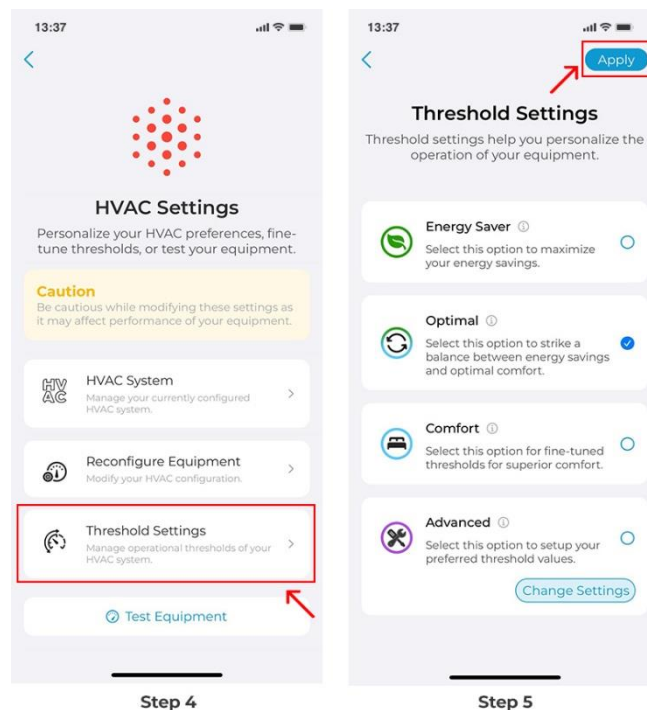
**Step 2:** Tap on 'Device Preferences.'

**Step 3:** Tap on 'HVAC Settings.'

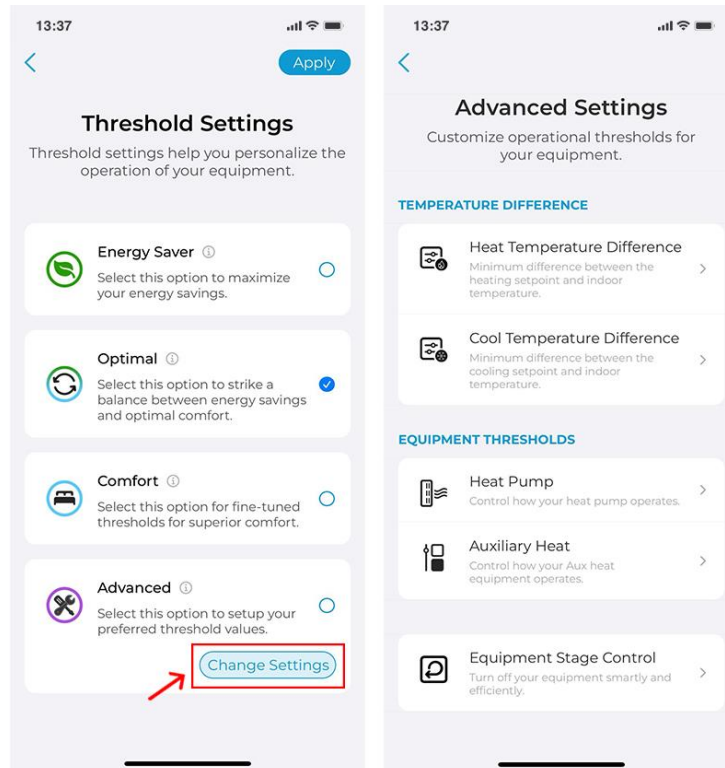


**Step 4:** Tap on 'Threshold Settings.'

**Step 5:** You can choose from the premade threshold templates (energy saver, optimal, or comfort) or select 'Advanced' to change settings according to your own preferences.

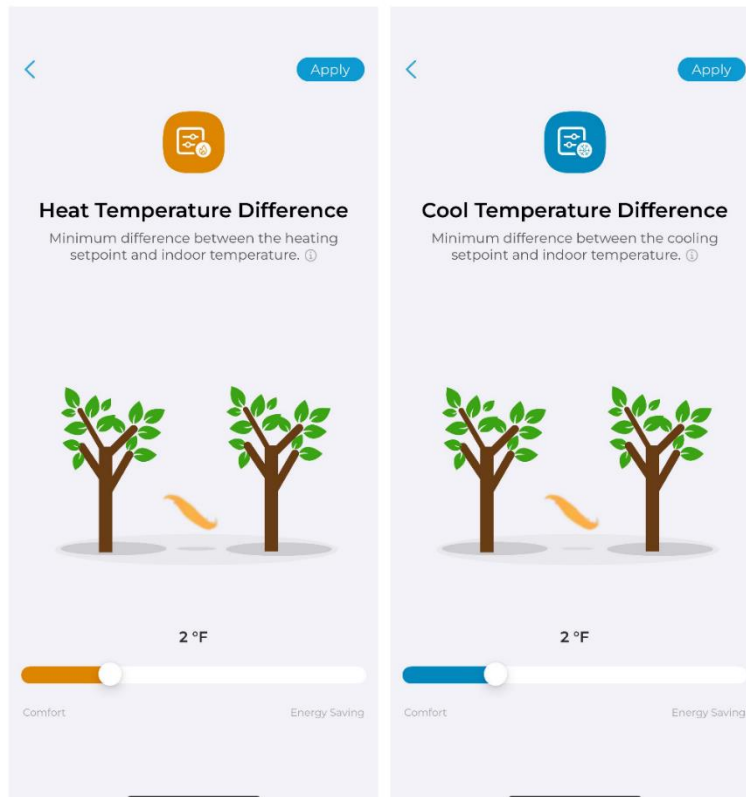


## Advanced Threshold Settings



### Temperature Difference:

- **Heat Temperature Difference:** Minimum difference between the heating setpoint and indoor temperature.
- **Cool Temperature Difference:** Minimum difference between the cooling setpoint and indoor temperature.



## **Equipment Thresholds**

### **-Temperature Thresholds**

#### **1- Temperature Difference Stage 2:**

This is the difference between your indoor and setpoint temperature before stage 2 is activated to help achieve the setpoint. Setting a higher number will result in more savings because stage 2 may not be activated frequently.

In normal weather conditions, HVAC systems can efficiently maintain indoor temperature using stage 1 only and save you energy.

#### **2- Minimum Outdoor Temperature:**

If the outdoor temperature falls below a minimum threshold, the heat pump will turn off and switch to auxiliary heating. When the outdoor temperature goes above the maximum threshold, auxiliary heating will stop, and the heat pump will start running again.

### **Operational Timers:**

#### **1- Maximum Runtime For Stage 1:**

The maximum runtime for stage 1 before stage 2 is activated to achieve the temperature setpoint.

#### **2- Minimum Off Time:**

The minimum OFF time of the heating or cooling system before the thermostat turns it ON again. (A minimum value of 5 minutes is recommended to prevent the system from short cycling.

#### **3- Minimum On Time:**

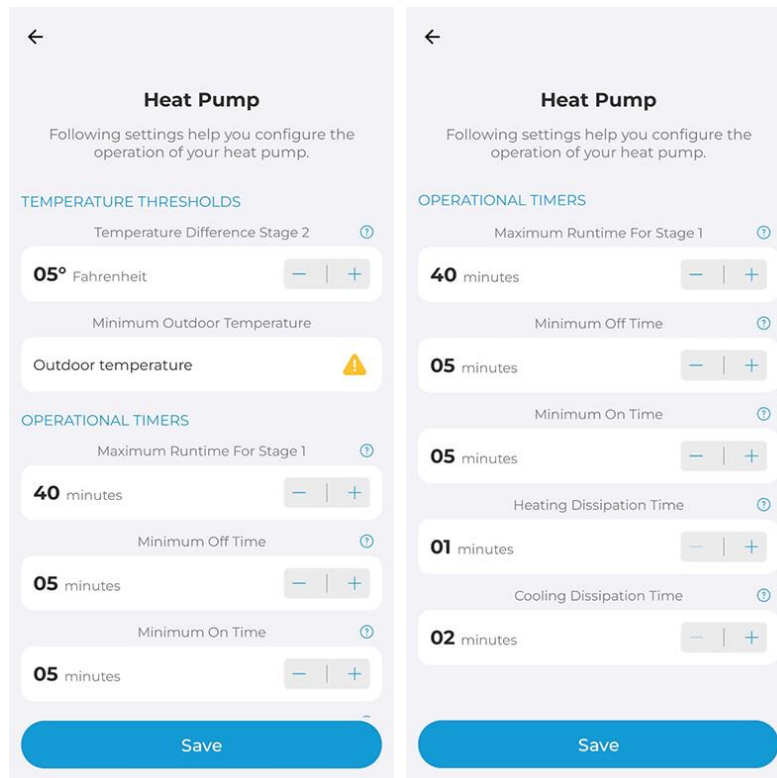
The minimum ON time of the heating or cooling system before the thermostat turns it OFF again. (A minimum value of 5 minutes is recommended to prevent the system from short cycling.

#### **4- Heating Dissipation Time:**

Time for which the fan of your HVAC system will run after the heating has been turned off. This ensures that the hot air left in the ducts is blown into the room to maximize the use of generated heat.

#### **5- Cooling Dissipation Time:**

Time for which the fan of your HVAC system will run after the cooling has been turned off. This ensures that any remaining cool air in the ducts is circulated into the room to maximize the efficiency of the cooling cycle.



## Equipment Stage Control:

### Stage Control

ON - Stage 2 of your equipment automatically turns off as your home temperature approaches your setpoint, and Stage 1 can efficiently reach your setpoint on its own.

OFF - Your equipment will keep on running in stage 2 until your setpoint is achieved.

### Aux to Heat Pump

ON - Auxiliary heat is automatically turned off as your home temperature approaches the setpoint, while the heat pump operates to attain your desired temperature.

OFF - Auxiliary heat keeps on running until your setpoint is achieved.

### Aux Control

ON - Stage 2 of your auxiliary equipment automatically turns off as your home temperature approaches the setpoint, and stage 1 can efficiently reach your setpoint on its own.

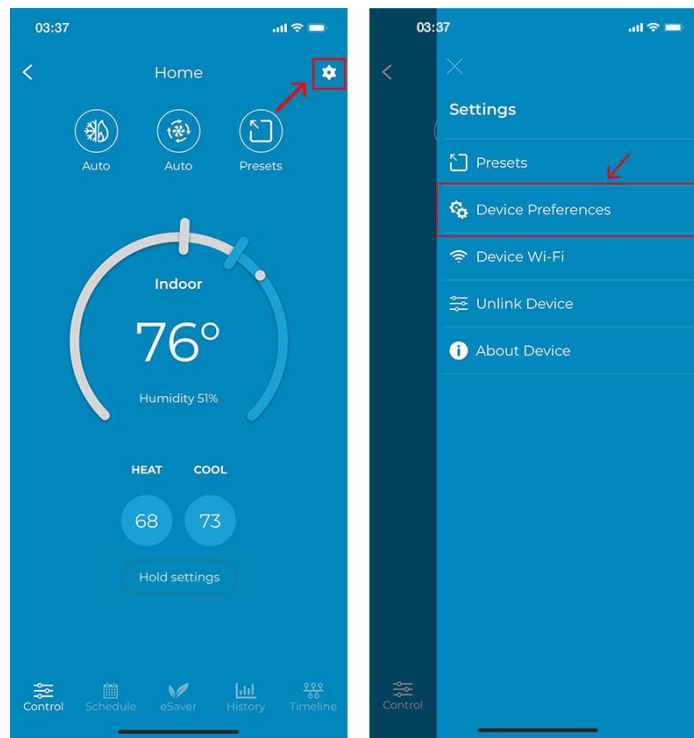
OFF - Stage 2 of auxiliary equipment keeps running until your setpoint is achieved.

## Testing Equipment

**Note:** It's advisable to test your unit before seasonal transitions to ensure it operates efficiently. Checking the heating function as summer winds down ensures it's ready for colder temperatures. Testing your cooling system in the spring ensures it's in good shape before the onset of summer. This proactive approach helps maintain your system's performance, allowing you to address any issues promptly if they arise.

**Step 1:** On the Control Screen, tap on the 'Settings' icon at the top right corner.

**Step 2:** Tap on 'Device Preferences.'



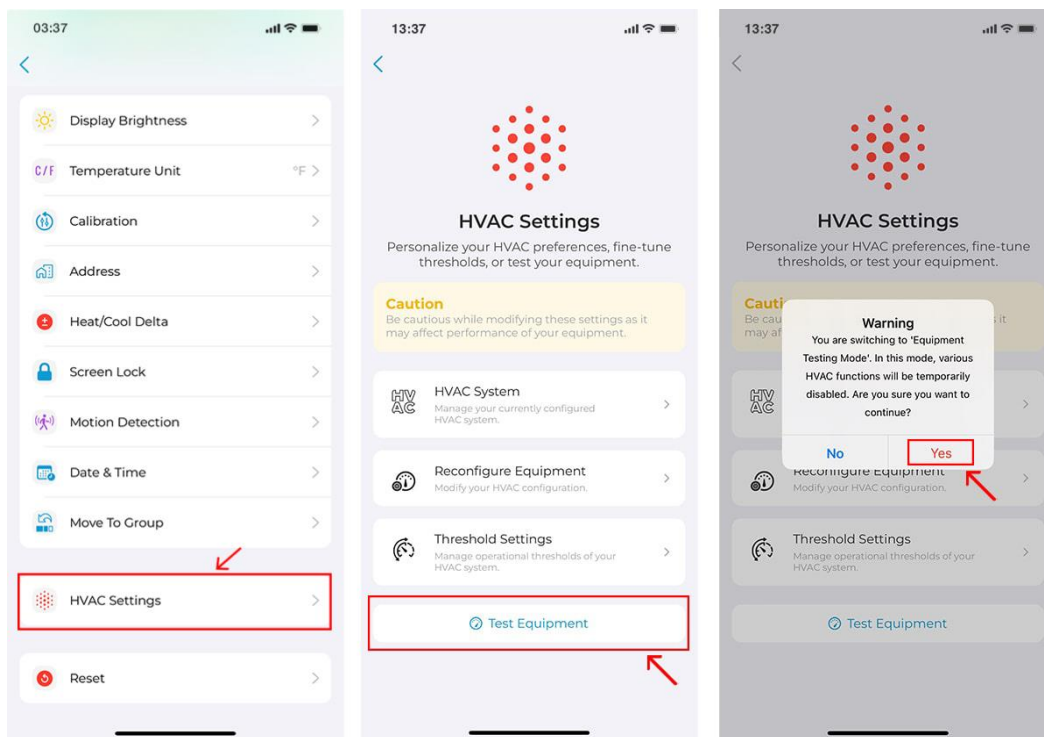
Step 1

Step 2

**Step 3:** Go to 'HVAC Settings.'

**Step 4:** Tap on 'Test Equipment.'

**Step 5:** Tap 'Yes' to proceed.



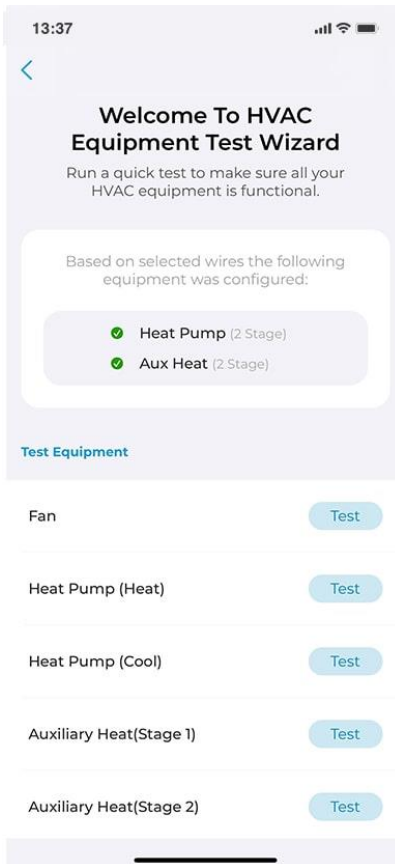
Step 3

Step 4

Step 5

The options shown on the Test Equipment screen will vary based on your configured equipment. For instance, if you only have a heat pump, the available options will differ from when you have both a heat pump and auxiliary heat connected.

Next, you will find the system components available for testing (depending on your configured equipment). You can select a particular function to test, such as the fan, heating, cooling, or auxiliary stages 1 and 2. Simply click on 'Test' to initiate the testing process.



## Resetting Thermostat

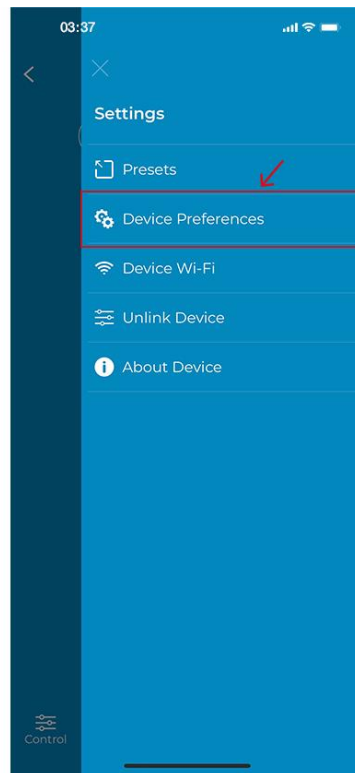
### Reset Preferences:

**Step 1:** On the Control Screen, tap on the 'Settings' icon at the top right corner.

**Step 2:** Tap on 'Device Preferences.'



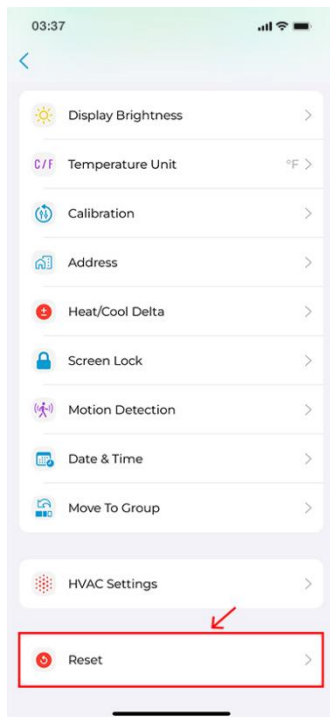
Step 1



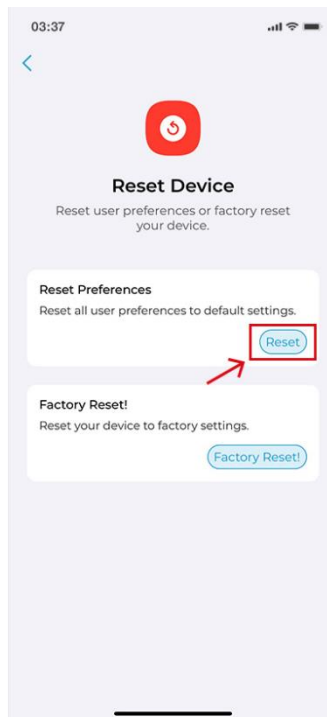
Step 2

**Step 3:** Tap on 'Reset'.

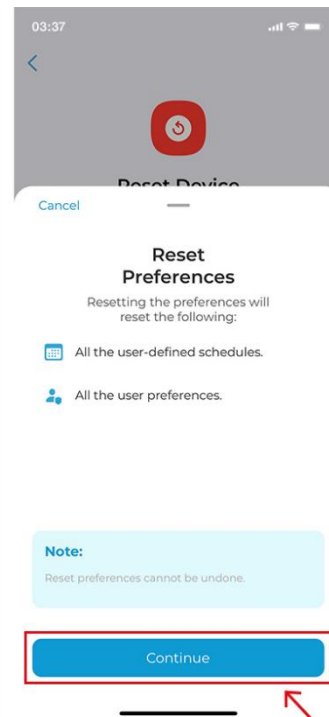
**Step 4:** Tap on 'Reset', and then tap on 'Continue'.



Step 3



Step 4

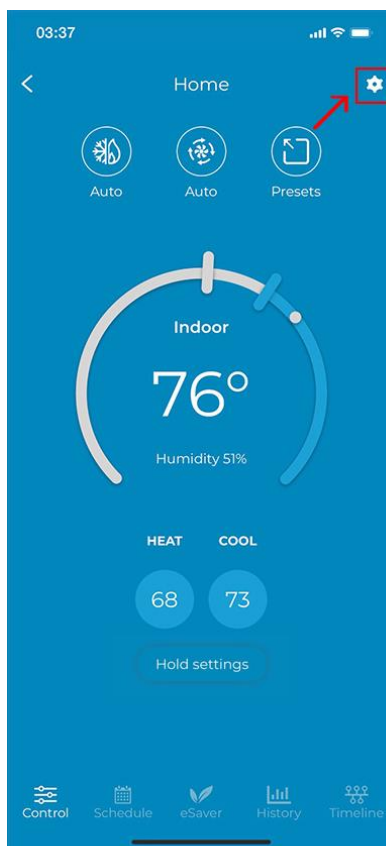




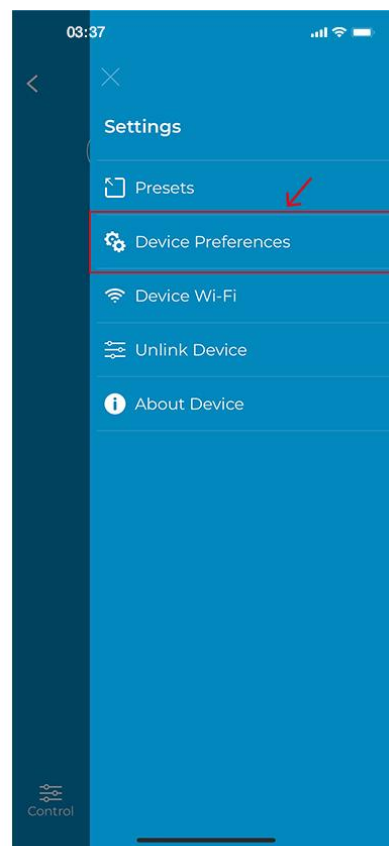
## - Factory Reset

**Step 1:** On the Control Screen, tap on the 'Settings' icon at the top right corner.

**Step 2:** Tap on 'Device Preferences'.



Step 1



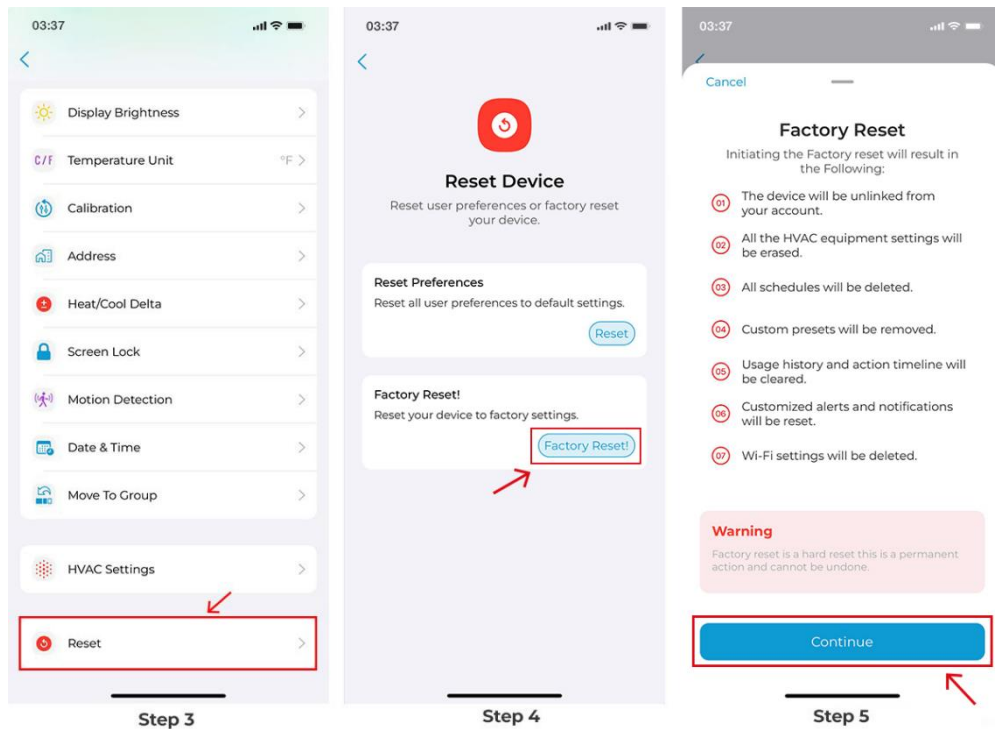
Step 2

**Step 3:** Tap on 'Reset.'

**Step 4:** Tap on 'Factory Reset.'

**Step 5:** Tap on 'Continue.'

Note: Factory Reset will delete all your schedules, preferences, HVAC equipment settings, and remove the thermostat from your account.

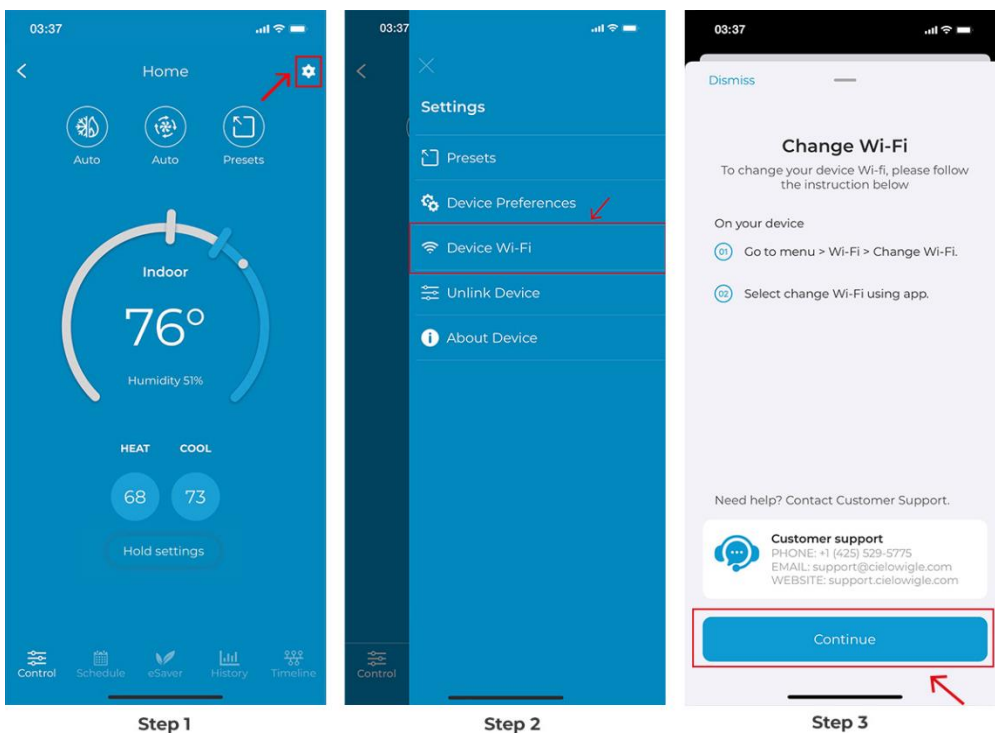


## Changing the Wi-Fi Network of Your Thermostat

**Step 1:** Now open the Cielo Home app. On the Control Screen, tap on the 'Settings' icon at the top right corner.

**Step 2:** Tap on 'Device Wi-Fi.'

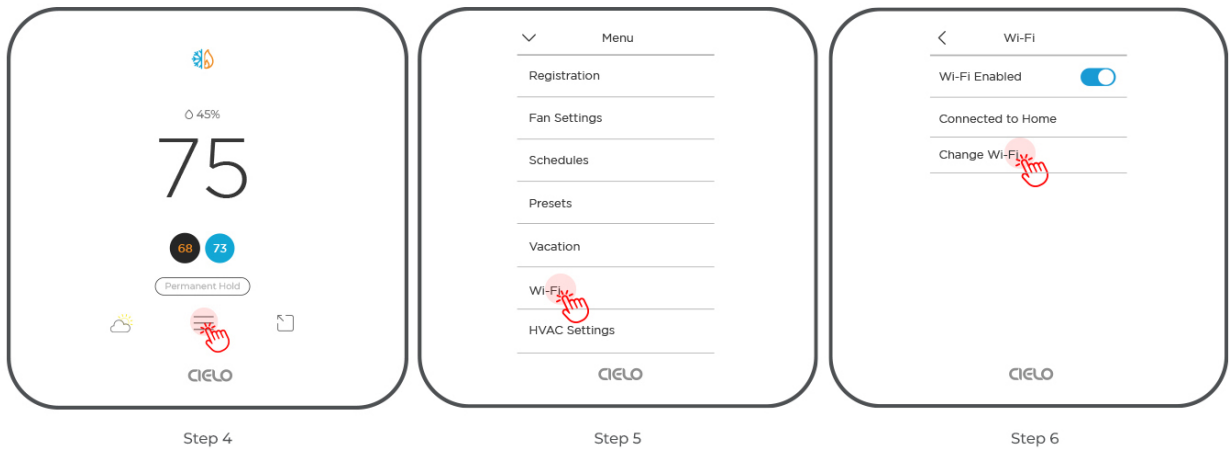
**Step 3:** Follow the on-screen instructions.



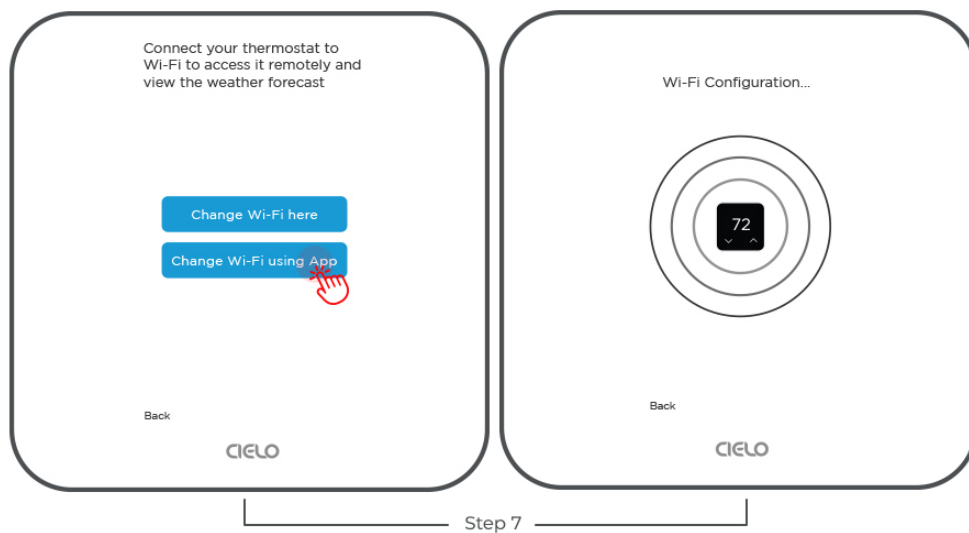
**Step 4:** Go to 'Menu' on your Cielo Smart Thermostat.

**Step 5:** Tap on 'Wi-Fi.'

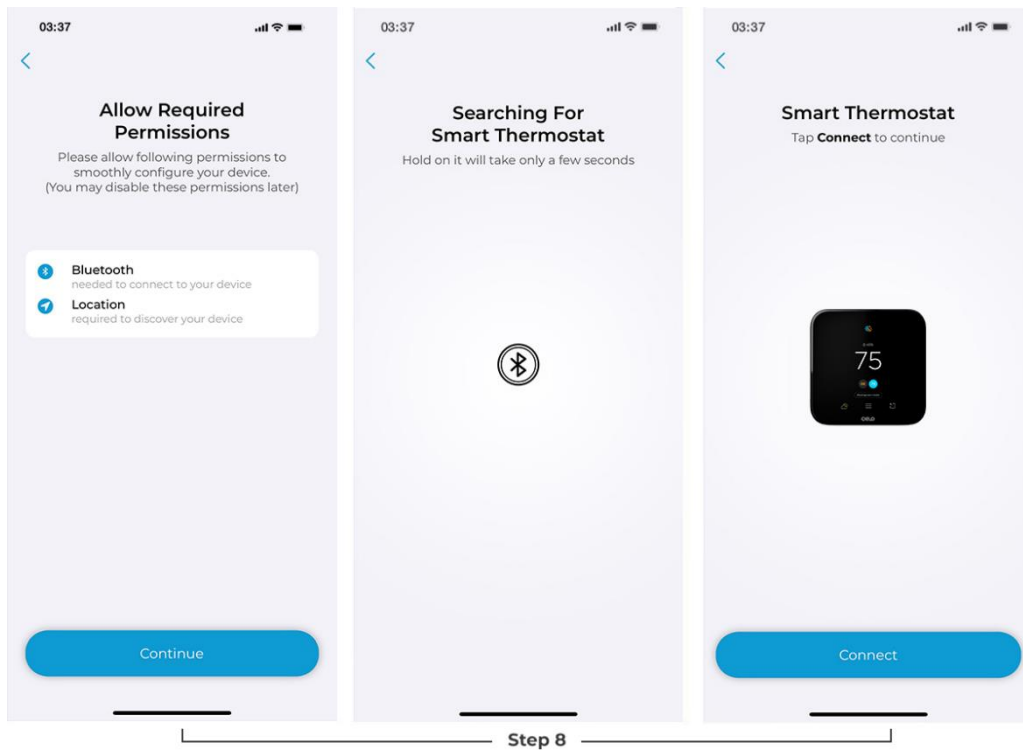
**Step 6:** Tap on 'Change Wi-Fi.'



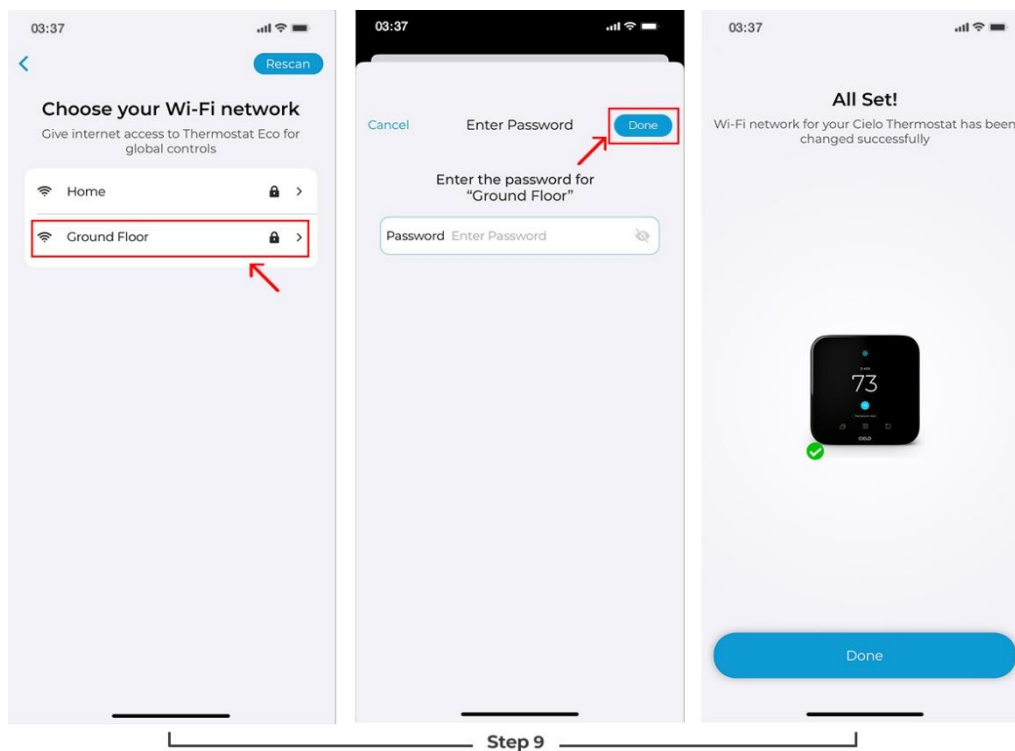
**Step 7:** Select 'Change Wi-Fi using App.' It will start the Wi-Fi configuration.



**Step 8:** Go to Cielo Home App and tap 'Continue.' It will start searching for your smart thermostat. It will take a few seconds. Tap 'Connect' to proceed.



**Step 9:** Choose your desired internet connection and enter your password to connect the smart thermostat to the internet.



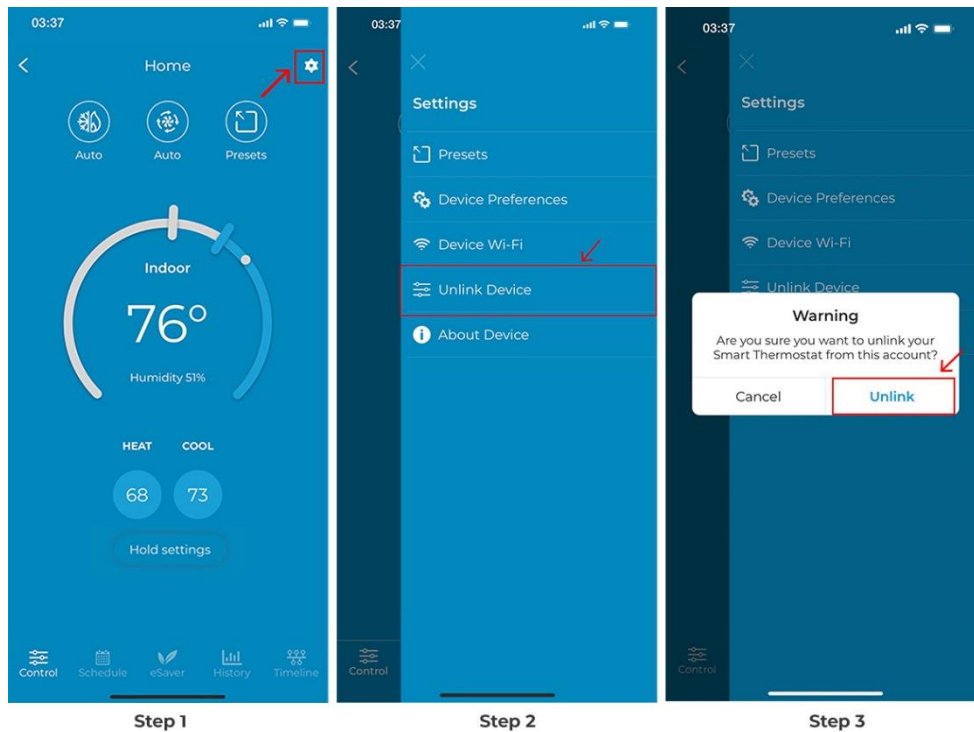
## Unlinking Device

**Step 1:** On the Control Screen, tap on the 'Settings' icon at the top right corner.

**Step 2:** Tap on 'Unlink Device.'

**Step 3:** Tap on 'Unlink.'

You have successfully unlinked the app from the device.



### Checking Details of Your Thermostat

**Step 1:** On the Control Screen, tap on the 'Settings' icon at the top right corner.

**Step 2:** Tap on 'About Device.'

You can see the device details here.

