

## **Cielo Breez Edge**

Cielo Home App Controls

## Cielo Home App Control Screen



Tap the settings icon  for more options

### Setting up Schedules for Your Heating and Cooling

Cielo Breez Edge lets you set cooling/heating schedules, allowing you to enjoy a true smart home experience and maximize your energy savings.

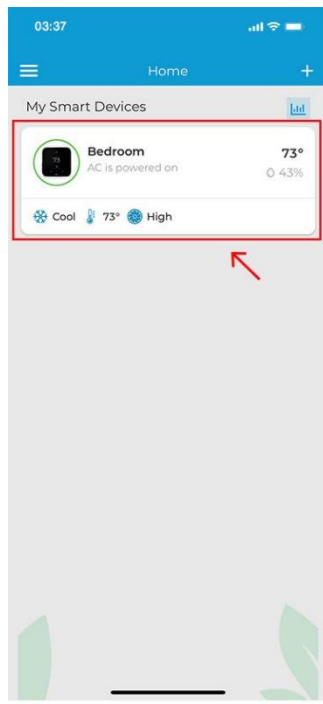
#### Setting up Schedules Using the Cielo Home App

##### 1. Setting up a Custom Schedule

**Step 1:** On the Home screen, tap the Breez Edge you want to set a schedule for.

**Step 2:** Tap on 'Schedule' in the navigation bar.

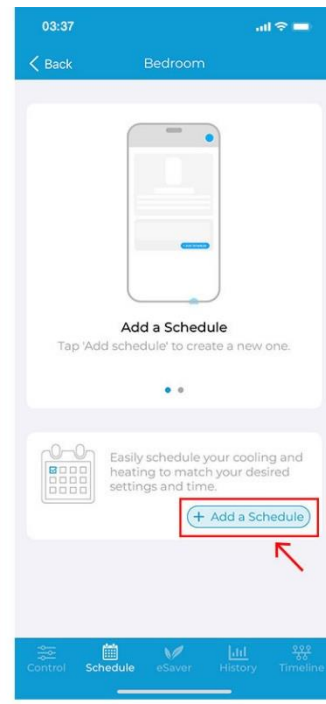
**Step 3:** Tap on '+ Add Schedule'.



Step 1



Step 2

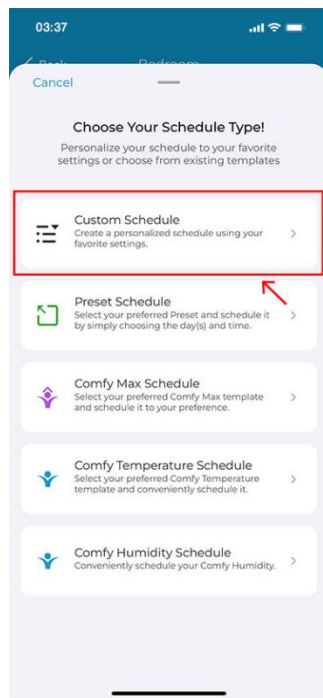


Step 3

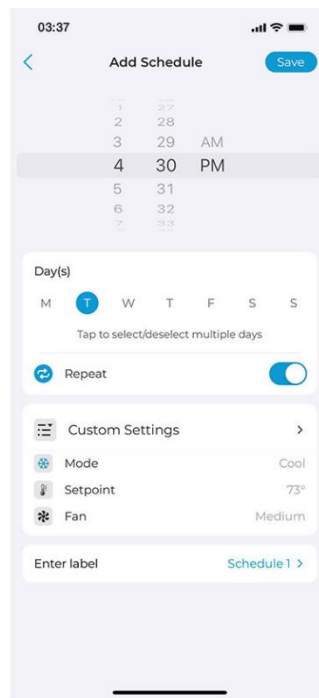
**Step 4:** Tap on 'Custom Schedule'.

**Step 5:** Select the time/days you want to set the schedule for and choose whether you want to set it up as a repeat schedule. Then tap on 'Custom Settings'.

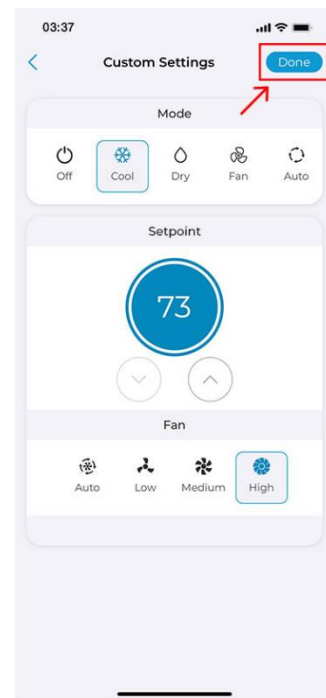
**Step 6:** Select the power state, mode, temperature, fan speed, and swing position of your choice and tap on 'Done'.



Step 4



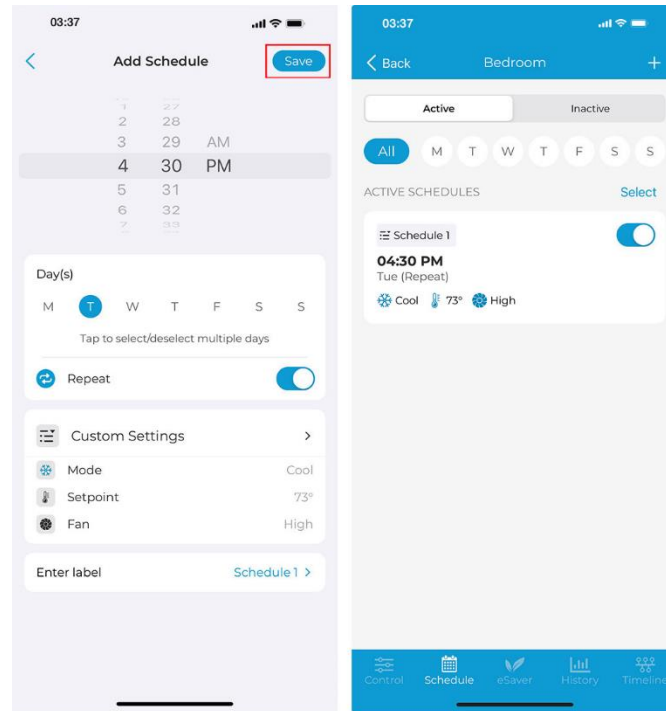
Step 5



Step 6

**Step 7:** Tap on 'Save' to set up the schedule.

Once the schedule is set, it will appear on the schedule tab. You can turn it On/Off by toggling the slider against the schedule.



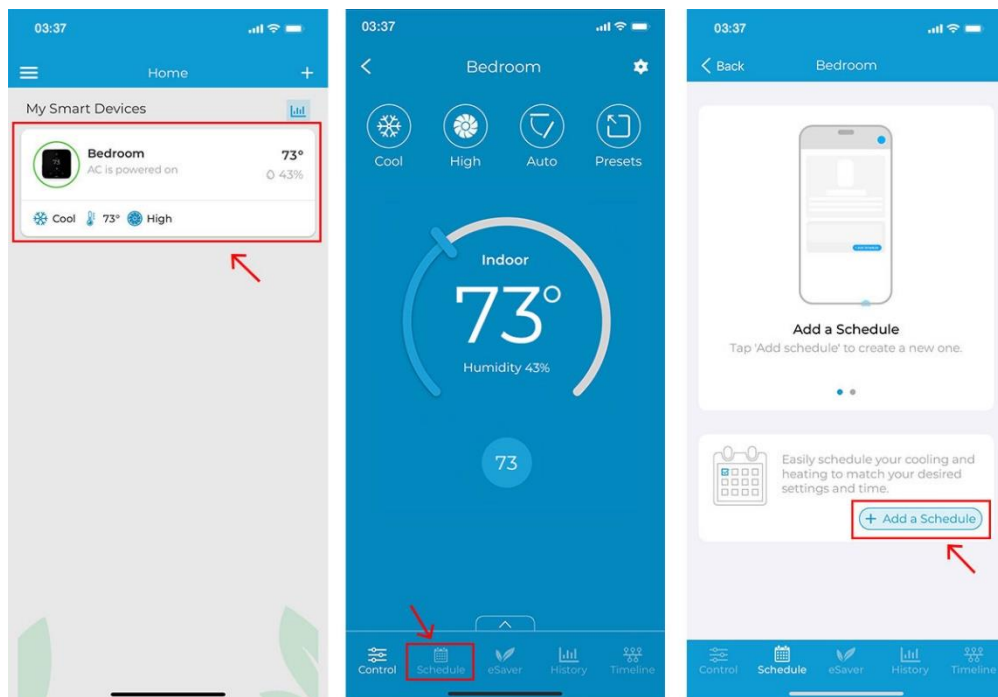
Step 7

## Scheduling a Preset

**Step 1:** On the Home screen, tap the Breez Edge you want to set a schedule for.

**Step 2:** Tap on 'Schedule' in the navigation bar.

**Step 3:** Tap on '+ Add Schedule'.



Step 1

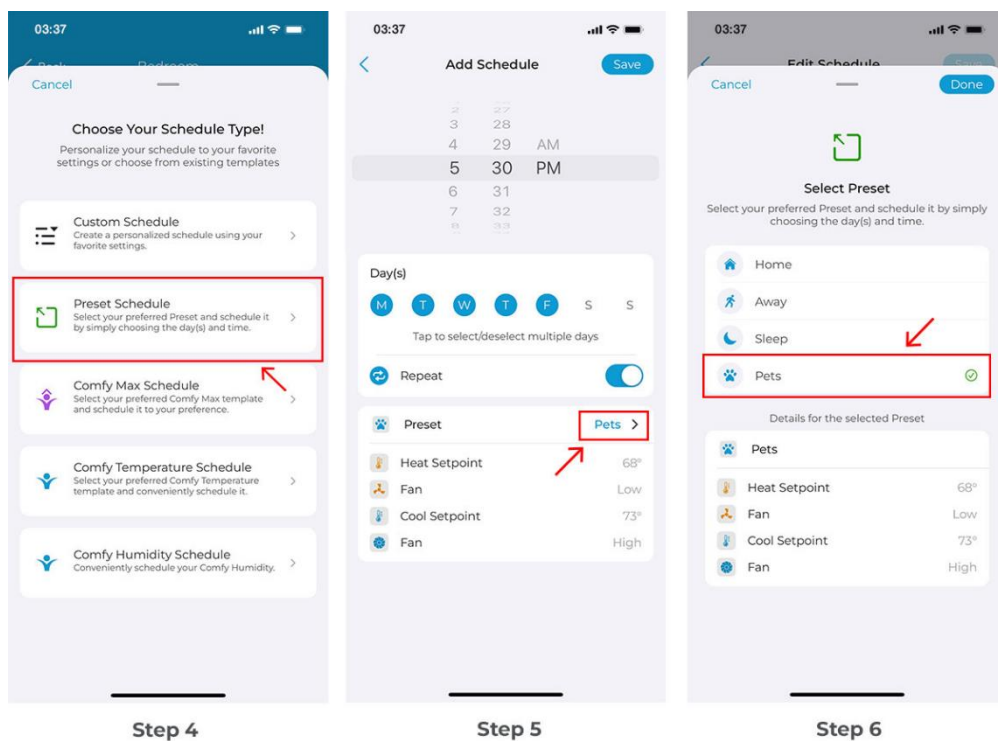
Step 2

Step 3

**Step 4:** Tap on 'Preset Schedule'.

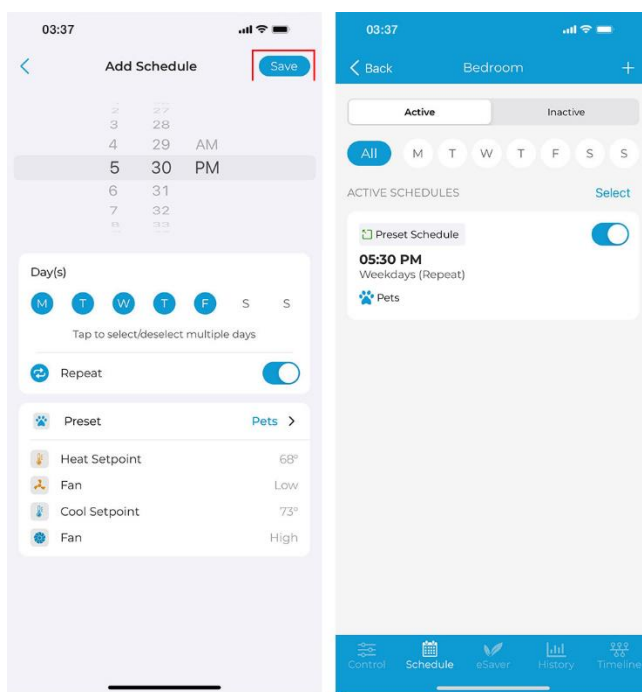
**Step 5:** Select the time/days you want to set the schedule for and choose whether you want to set it as a repeat schedule. Then, tap on 'Preset'.

**Step 6:** Select the Preset you want to schedule and tap on 'Done'.



**Step 7:** Tap on 'Save' to set up the schedule.

Once the schedule is set, it will appear on the schedule tab. You can turn it On/Off by toggling the slider against the schedule.

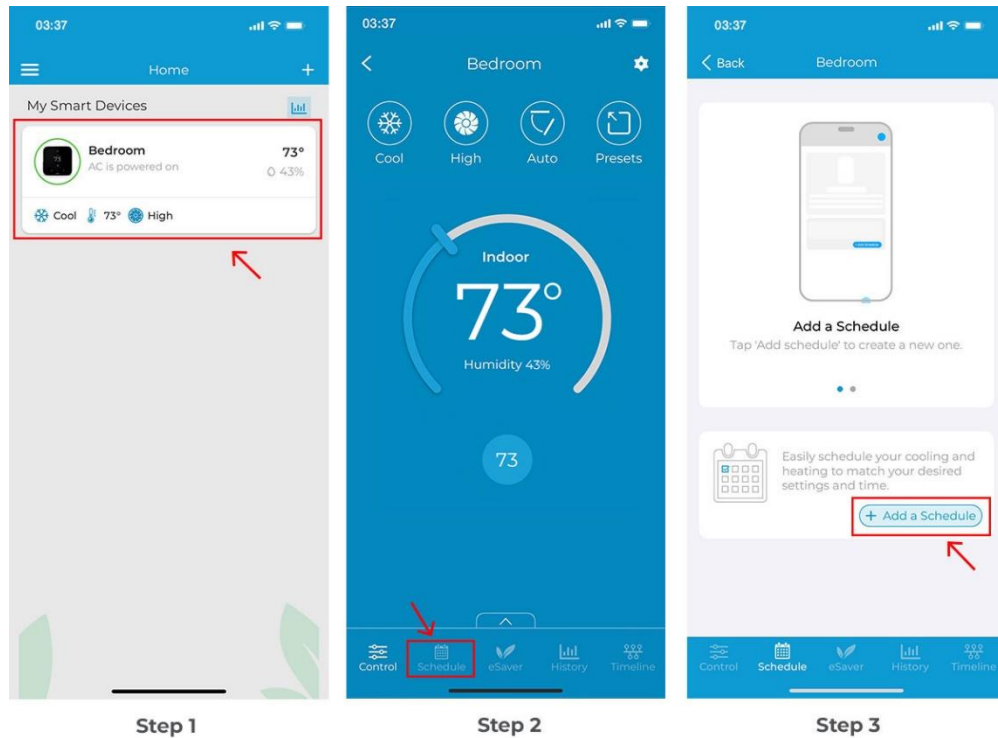


## Scheduling Comfy Max

**Step 1:** On the Home screen, tap the Breez Edge you want to set a schedule for.

**Step 2:** Tap on 'Schedule' in the navigation bar.

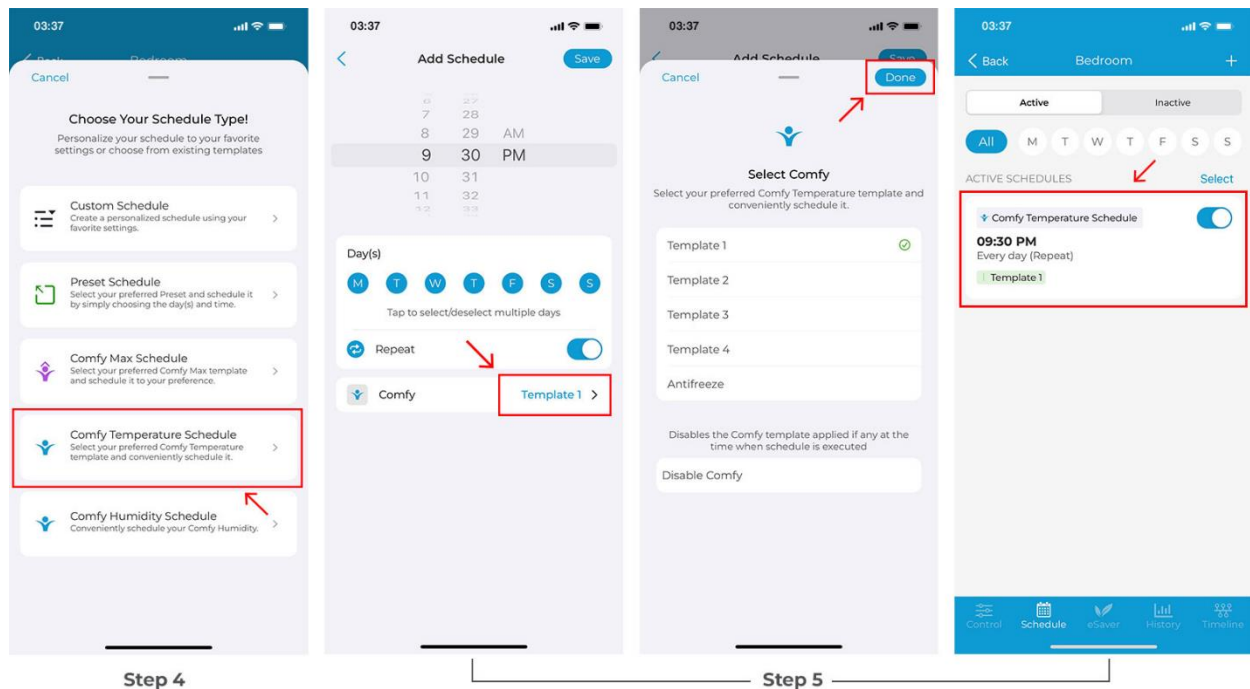
**Step 3:** Tap on '+ Add Schedule'.



**Step 4:** Select 'Comfy Max Schedule'.

**Step 5:** Select the time and day(s) and choose whether you want to set it as a repeat schedule. Then, select your desired Comfy Max template. Tap on 'Done' once selected.

Once the Comfy Max schedule is set, it will appear on the schedules tab. You can enable/disable it by toggling the slider against the schedule.

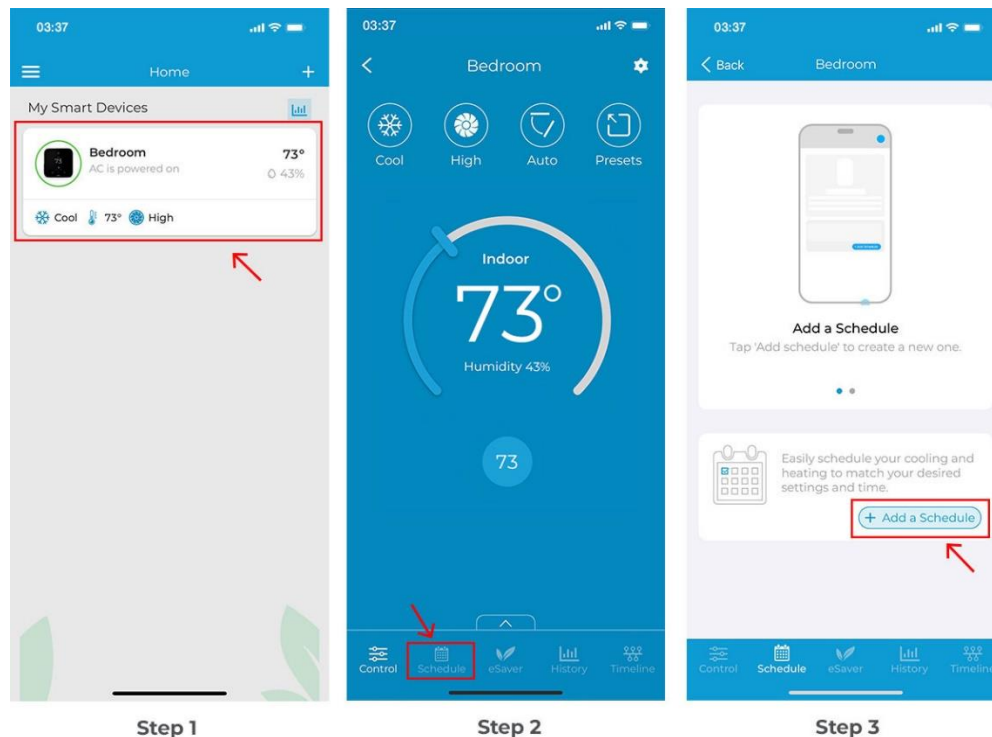


## Adding Comfy Temperature Schedule

**Step 1:** On the Home screen, tap the Breez Edge you want to set a schedule for.

**Step 2:** Tap on 'Schedule' in the navigation bar.

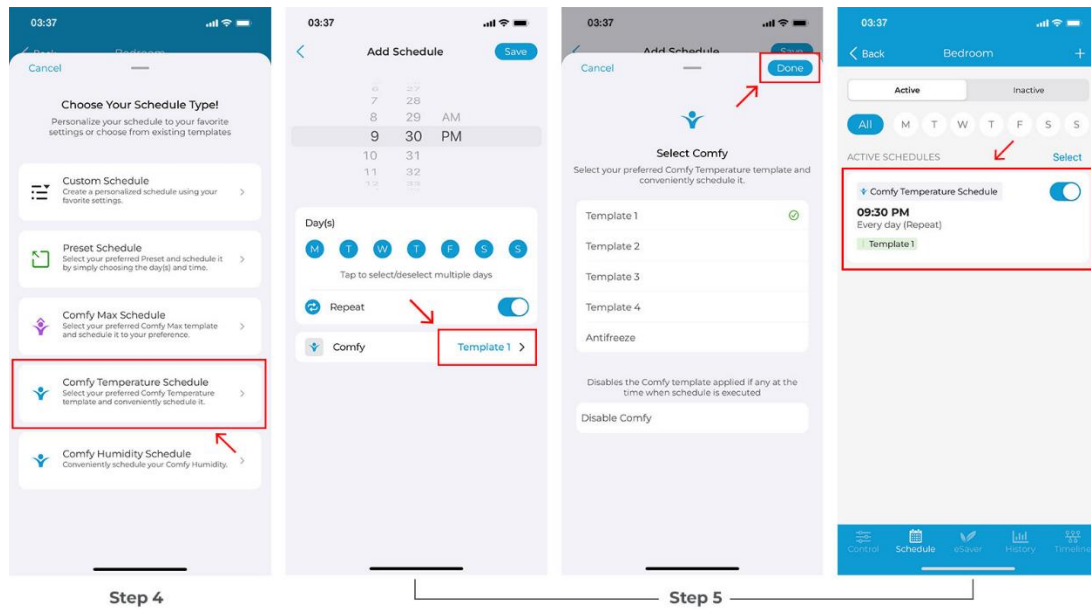
**Step 3:** Tap on '+ Add Schedule'.



**Step 4:** Select 'Comfy Temperature Schedule'.

**Step 5:** Select the time and day(s) and choose whether you want to set it as a repeat schedule. Then, select your desired Comfy template.

Once the Comfy temperature schedule is set, it will appear on the schedules tab. You can enable/disable it by toggling the slider against the schedule.

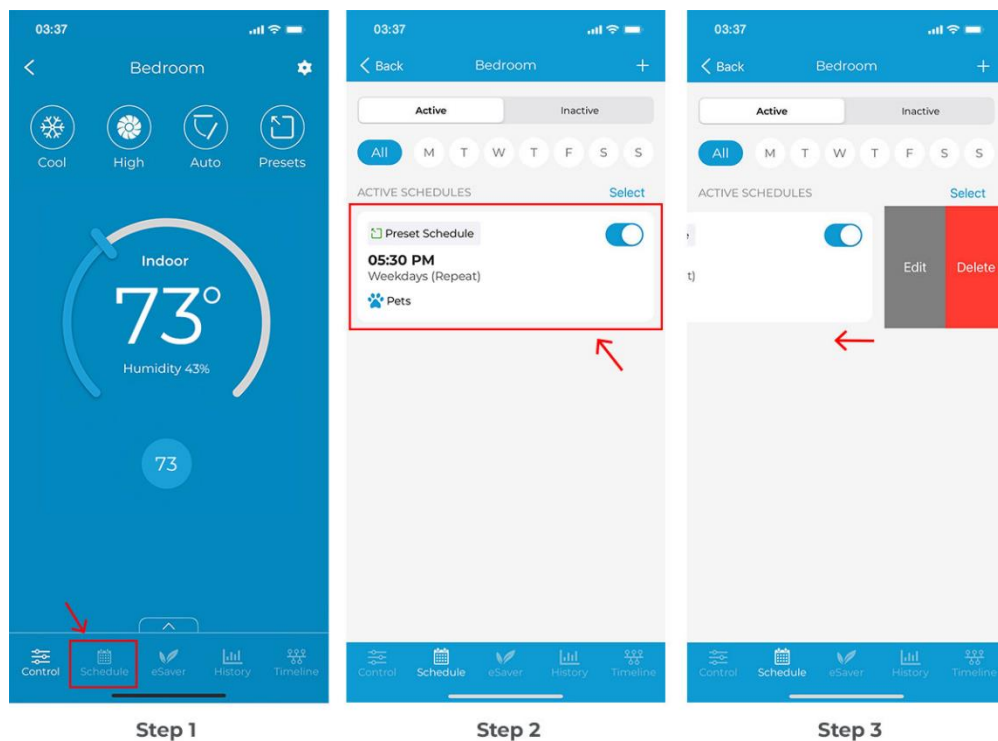


## Deleting/Editing a schedule

**Step 1:** From the device control screen, tap on 'Schedule' in the navigation bar.

**Step 2:** In the 'Schedule' tab, you will see all your set schedules.

**Step 3:** Swipe left on the schedule you want to edit or delete until both options for Edit/Delete appear. Choose your desired option and proceed.



## Setting up Comfy Max

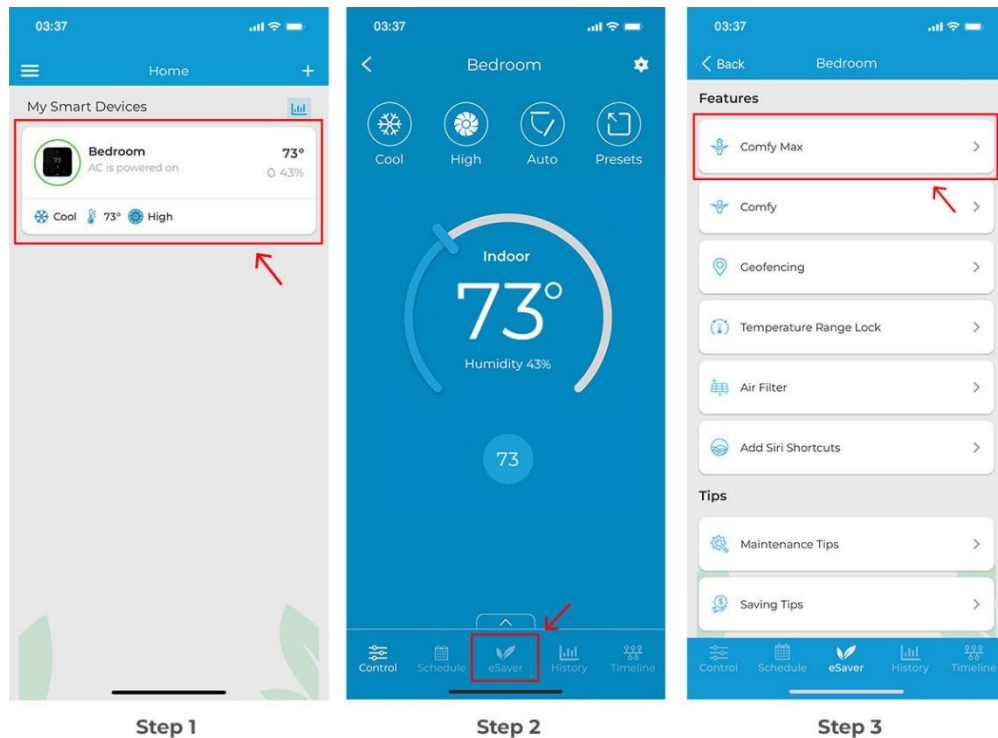
Comfy Max transforms your Breez Edge into a true smart thermostat for your mini-split. It enables your mini-split to work in a configurable and intelligent mode. It prevents overheating/overcooling while maintaining your desired comfort settings at all times.

You can set up Comfy Max for your mini-split by performing these steps via Cielo Home app:

**Step 1:** On the Home screen, tap on the Breez Edge you want to set Comfy Max on.

**Step 2:** Tap on 'eSaver' in the navigation bar.

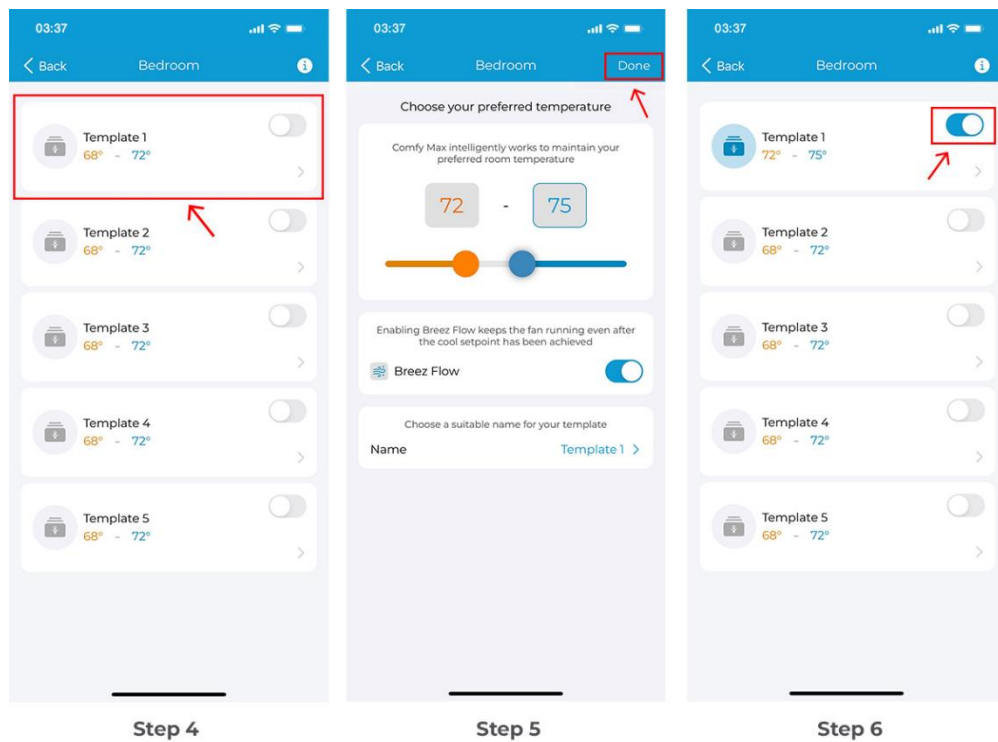
**Step 3:** Tap on 'Comfy Max'.



**Step 4:** There are 5 pre-added templates that you can edit according to your own preferences. Tap on a template to make adjustments.

**Step 5:** Choose your preferred temperature, and select whether you want the fan (Breez Flow) to run after your desired cooling temperature is reached. Add a name for this template and tap on 'Done'.

**Step 6:** Your Comfy Max settings are now saved. You can turn Comfy Max 'On' from the toggle next to the name of the Comfy Max template.

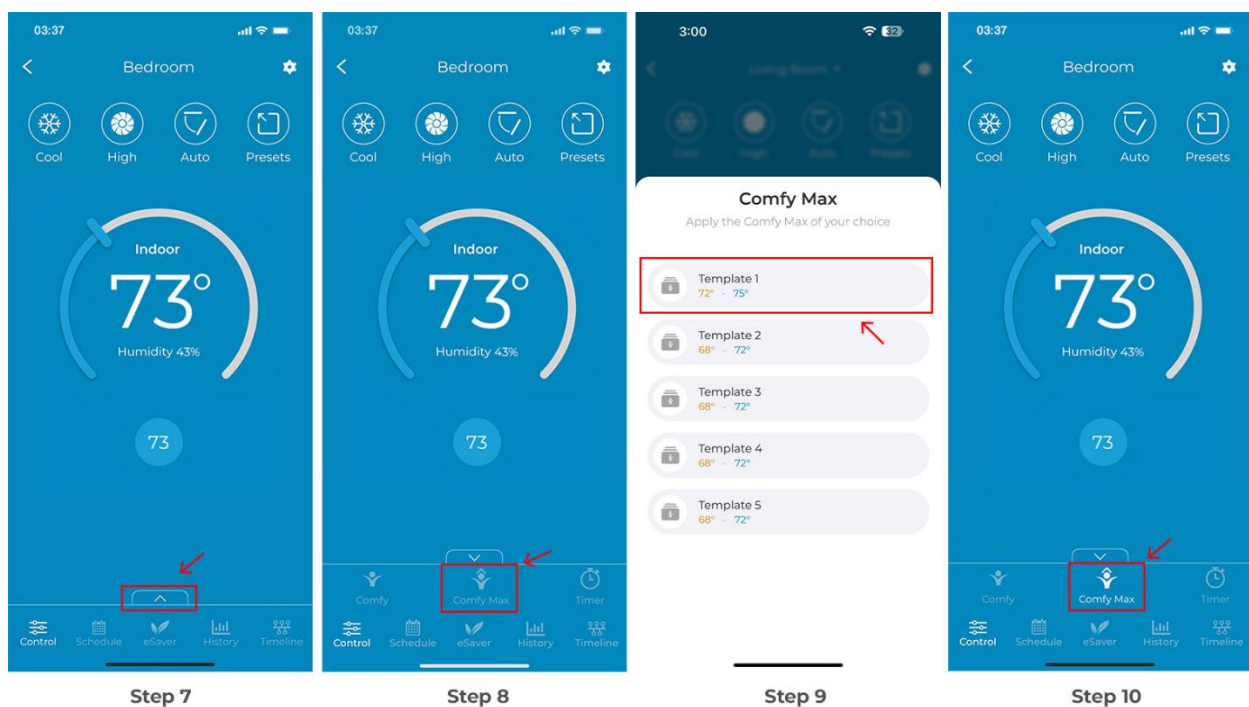


**Step 7:** You can also turn Comfy Max On/Off from the app control screen. Tap on the 'Up' arrow icon at the bottom of the control screen.

**Step 8:** In the pop-up navigation bar, tap on 'Comfy Max' to toggle it On or Off. The greyed-out icon shows that it is currently Off.

**Step 9:** Select the desired Comfy Max template from the list available.

**Step 10:** Comfy Mode is now active, and the Comfy icon will turn white. It is now turned 'On'.



## Setting up Comfy Temperature Mode

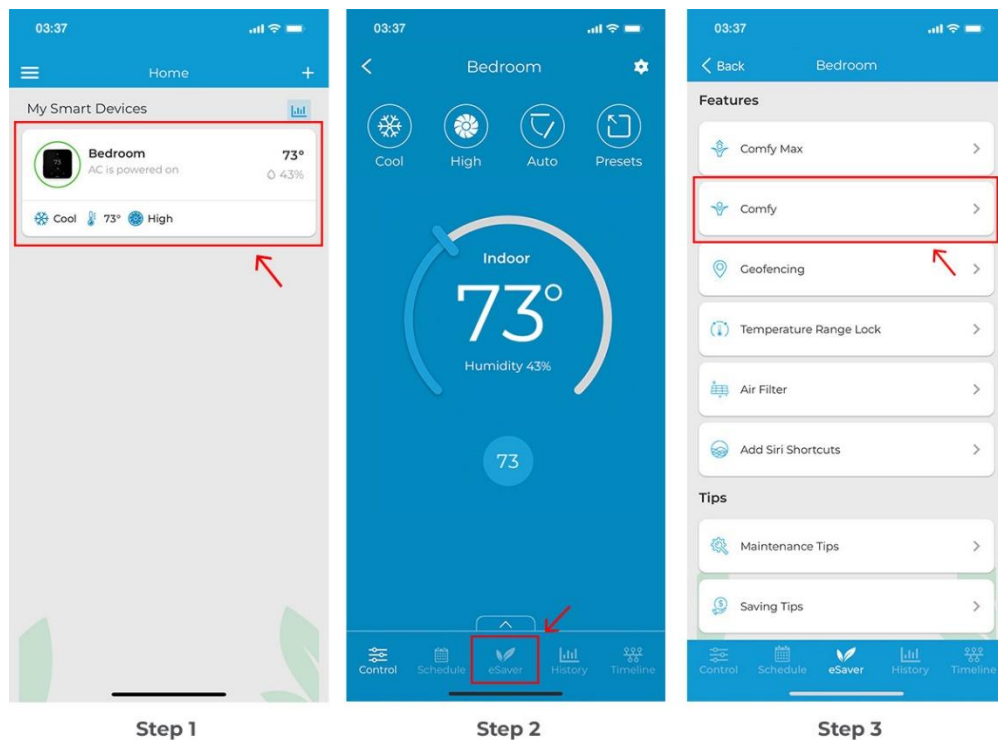
Comfy mode helps prevent temperature extremes by maintaining your desired settings based on your defined setpoints.

You can set up comfy temperature mode for your mini-split by performing these steps via the Cielo Home app:

**Step 1:** On the Home screen, tap on the Breez Edge you want to set Comfy temperature mode on.

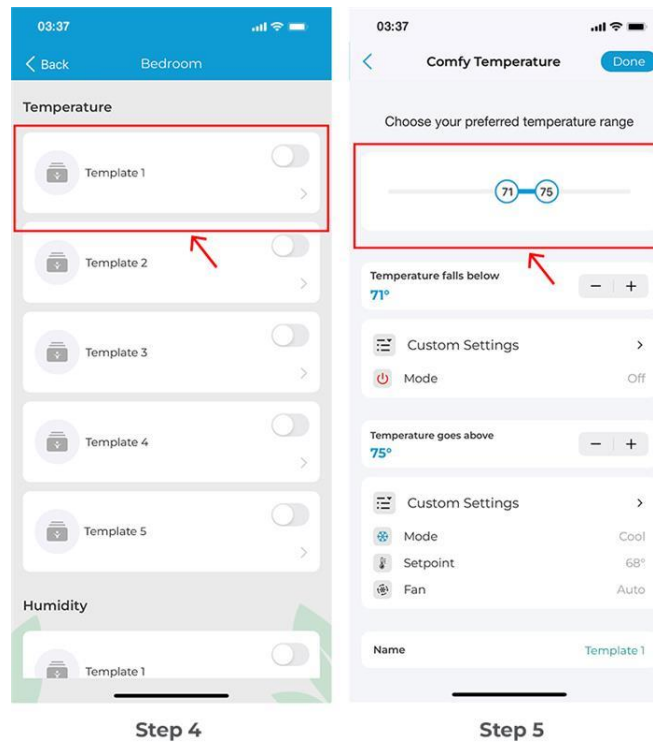
**Step 2:** Tap on 'eSaver' in the navigation bar.

**Step 3:** Tap on 'Comfy'.

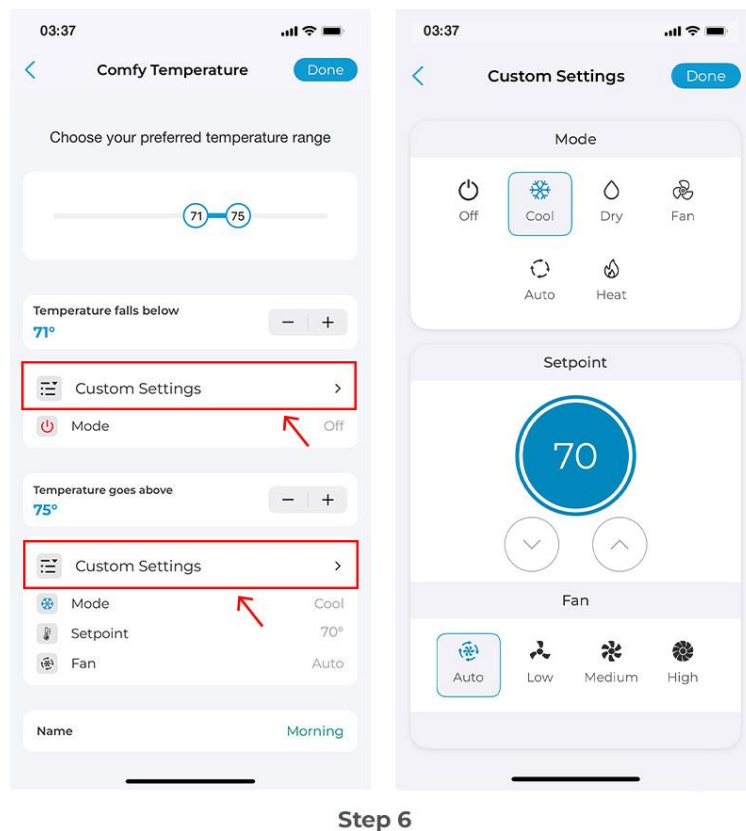


**Step 4:** Tap on a template.

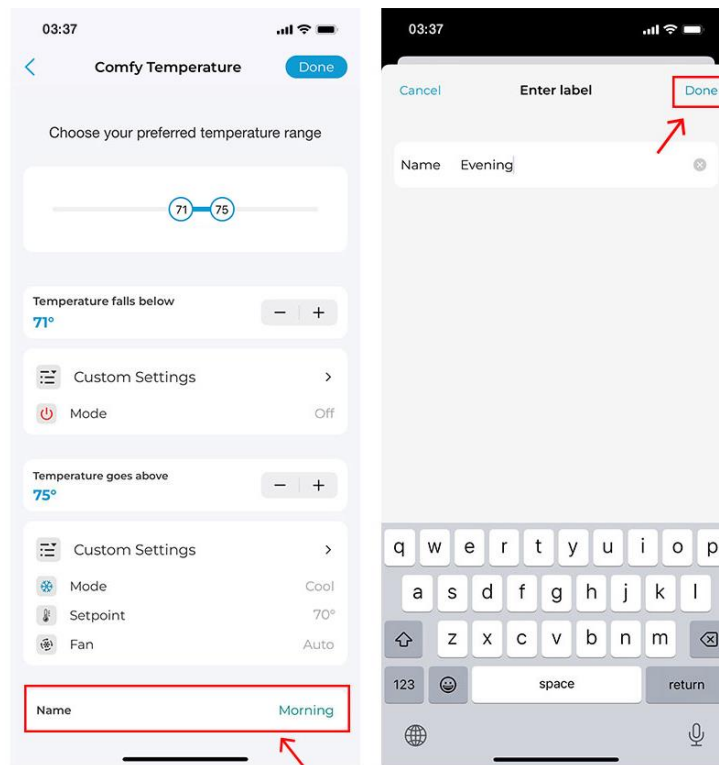
**Step 5:** Choose your preferred temperature range.



**Step 6:** Tap on 'Custom Settings' to select what actions to perform if the temperature falls below or goes above the set range, e.g., changing its mode, setpoint, and fan speed to help it get back into the preferred temperature range.



**Step 7:** Add a name for this template and tap on 'Done'.

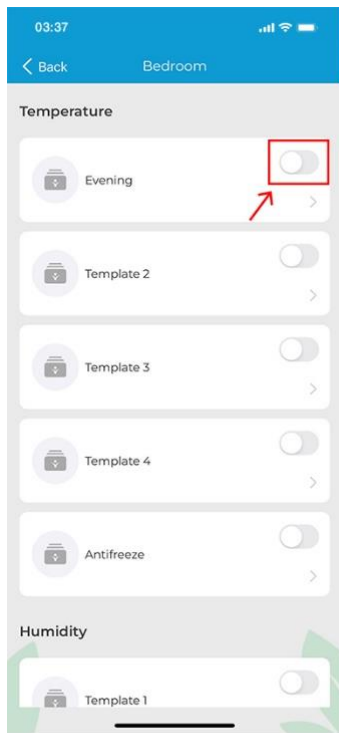


**Step 7**

**Step 8:** Your Comfy settings are now saved. It is disabled by default. You can turn Comfy 'On' from the toggle next to the name of the Comfy template. Once the device triggers the defined comfy temperature mode actions, you will get a notification in your app timeline.

**Step 9:** You can also turn Comfy Mode On/Off from the app control screen. Tap on the 'Up' arrow icon at the bottom of the control screen.

**Step 10:** In the pop-up navigation bar, tap on 'Comfy' to toggle it On or Off. The greyed-out icon shows that it is currently Off.



Step 8



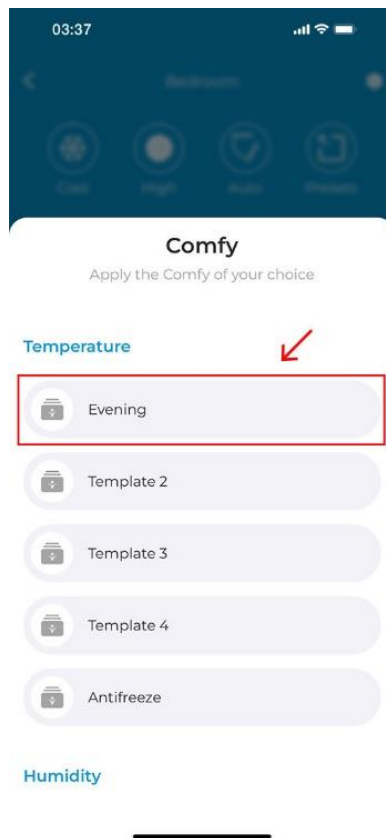
Step 9



Step 10

**Step 11:** Select the desired Comfy Mode from the list of available Comfy templates.

**Step 12:** Comfy Mode is now active, and the Comfy icon will turn white.



Step 11



Step 12

## Setting up Comfy Humidity Mode

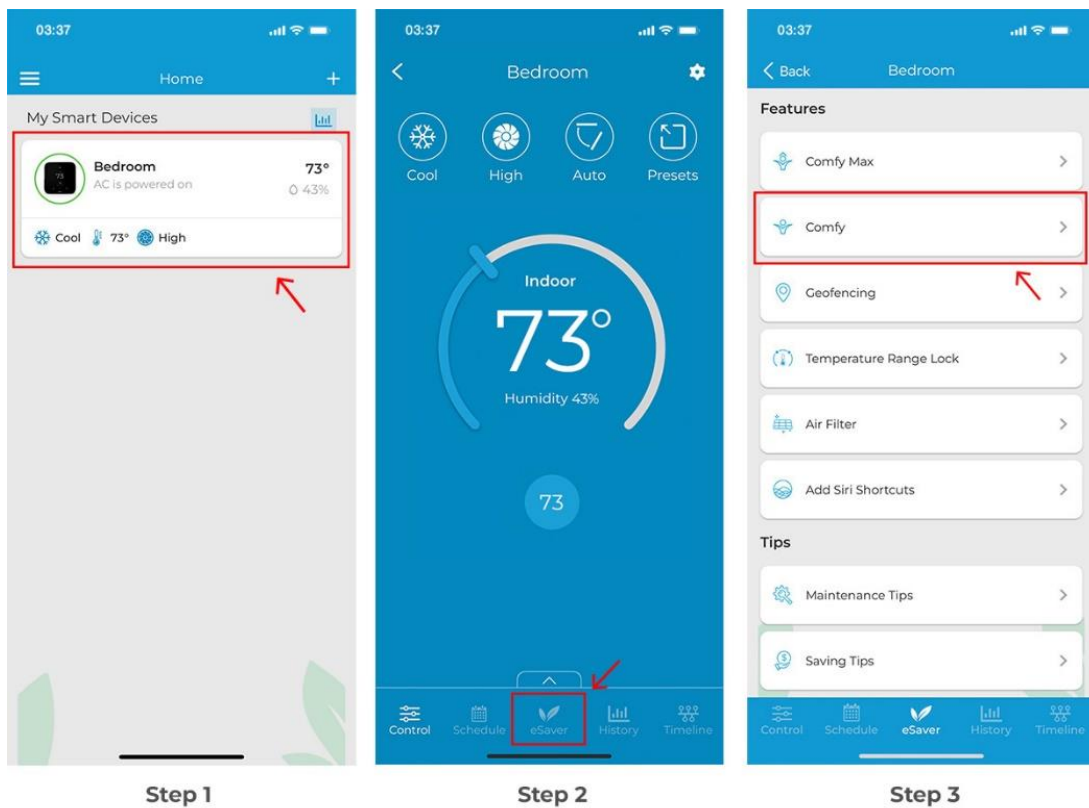
Comfy Humidity automatically changes your settings if the room humidity goes above or falls below a pre-set value, helping to maintain your ideal humidity levels.

You can set up comfy humidity mode for your mini-split by performing these steps via the Cielo Home app:

**Step 1:** On the Home screen, tap on the Breez Edge you want to set Comfy humidity mode on.

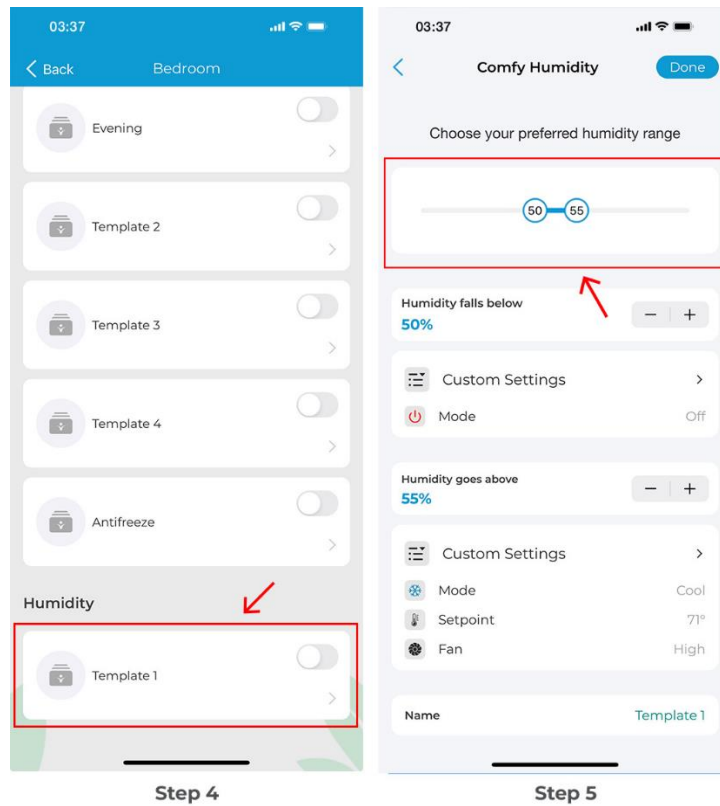
**Step 2:** Tap on 'eSaver' in the navigation bar.

**Step 3:** Tap on 'Comfy'.



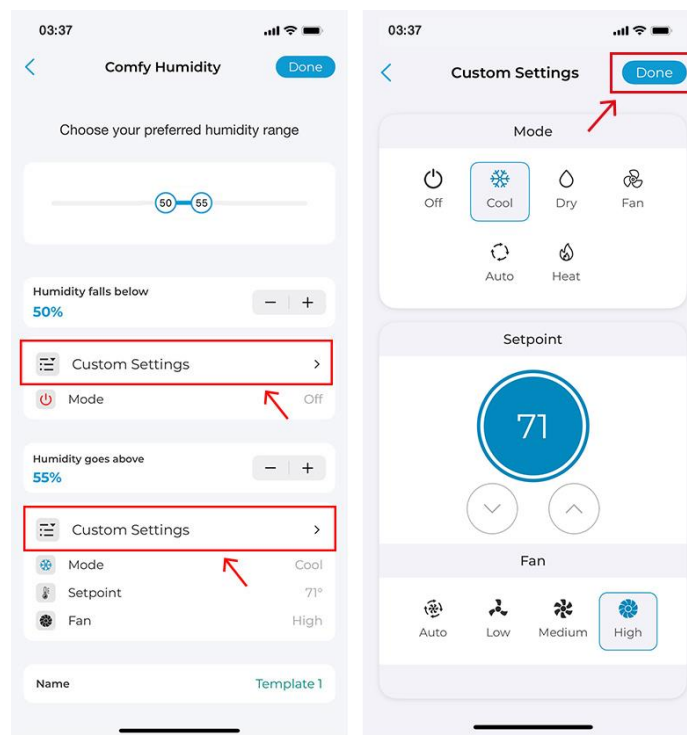
**Step 4:** Tap on a template under the 'Humidity' section.

**Step 5:** Choose your preferred humidity range.



**Step 6:** Tap on 'Custom Settings' to select what actions to perform if the humidity falls below or goes above the set range, e.g., changing its mode, setpoint, and fan speed to help it get back into the preferred humidity levels. Tap on 'Done' once you have selected your settings.

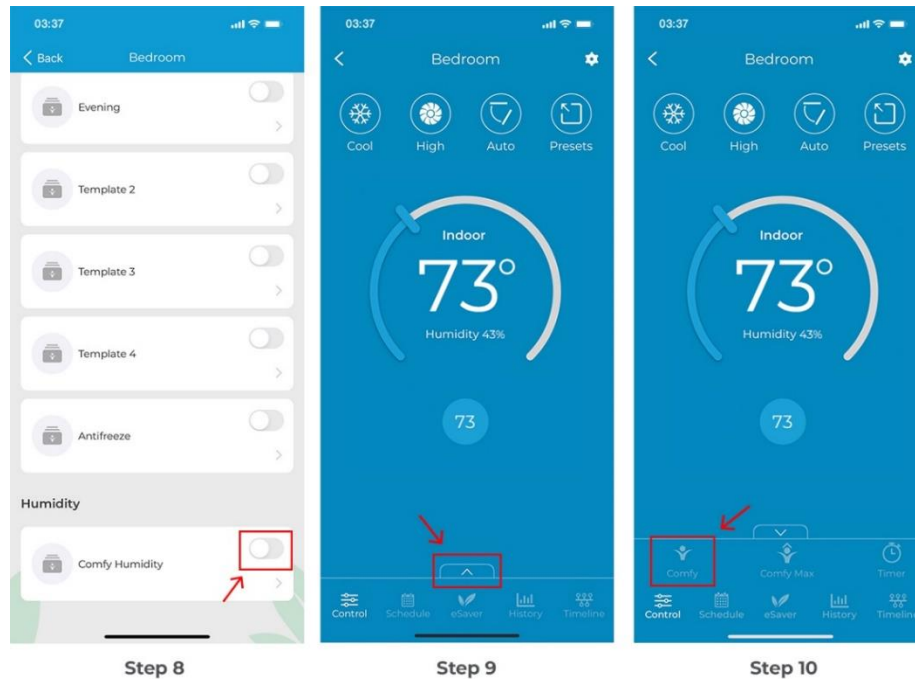
**Step 7:** Add a name for this template and tap on 'Done'.



**Step 8:** 'Comfy Humidity' is now set. You can turn Comfy Humidity 'On' or 'Off' from the toggle next to the name of the Comfy Humidity. Once the device triggers the defined comfy humidity mode actions, you will get a notification in your app timeline.

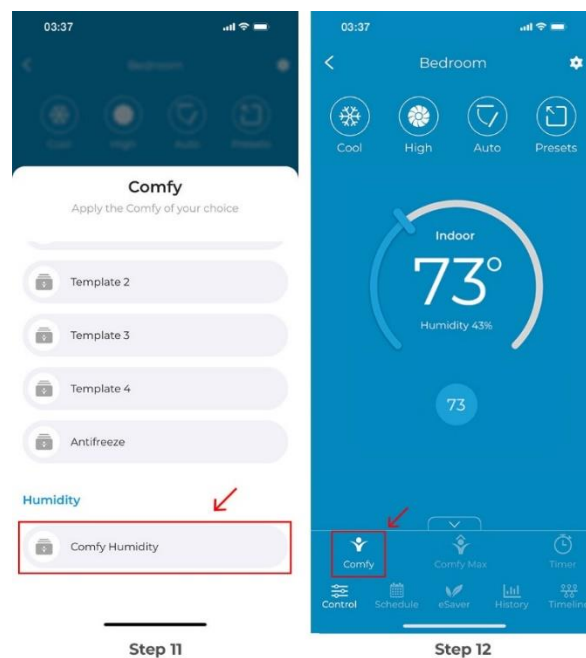
**Step 9:** You can also turn Comfy Humidity On/Off from the app control screen. Tap on the 'Up' arrow icon at the bottom of the control screen.

**Step 10:** On the pop-up navigation bar, tap on 'Comfy' to toggle it On or Off. Currently, it is turned 'Off', shown by the greyed-out icon.



**Step 11:** Select the Comfy Humidity template.

**Step 12:** Comfy Humidity is now active, and the Comfy icon will turn white.



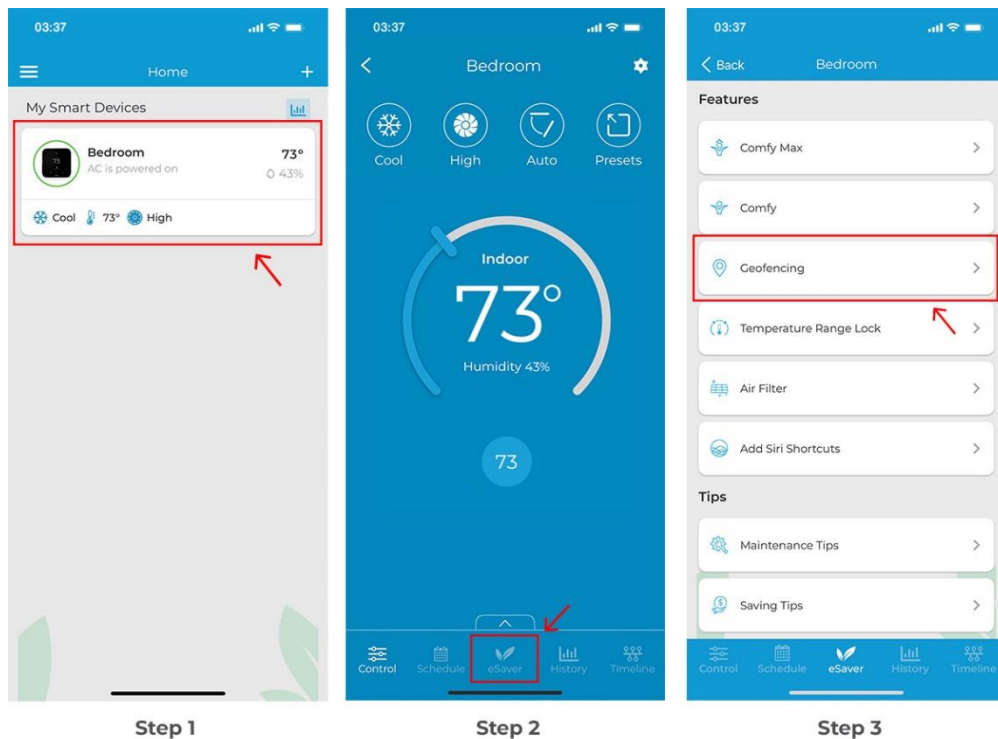
## Enabling Geofencing (Location-Based Controls)

Geofencing turns your mini-split on before you arrive and turns it off after you have left the pre-set location. You can configure location-based control for your mini-split by performing these steps via the Cielo Home app:

**Step 1:** On the Home screen, tap on the Breez Edge you want to control through location controls.

**Step 2:** Tap on 'eSaver' in the navigation bar.

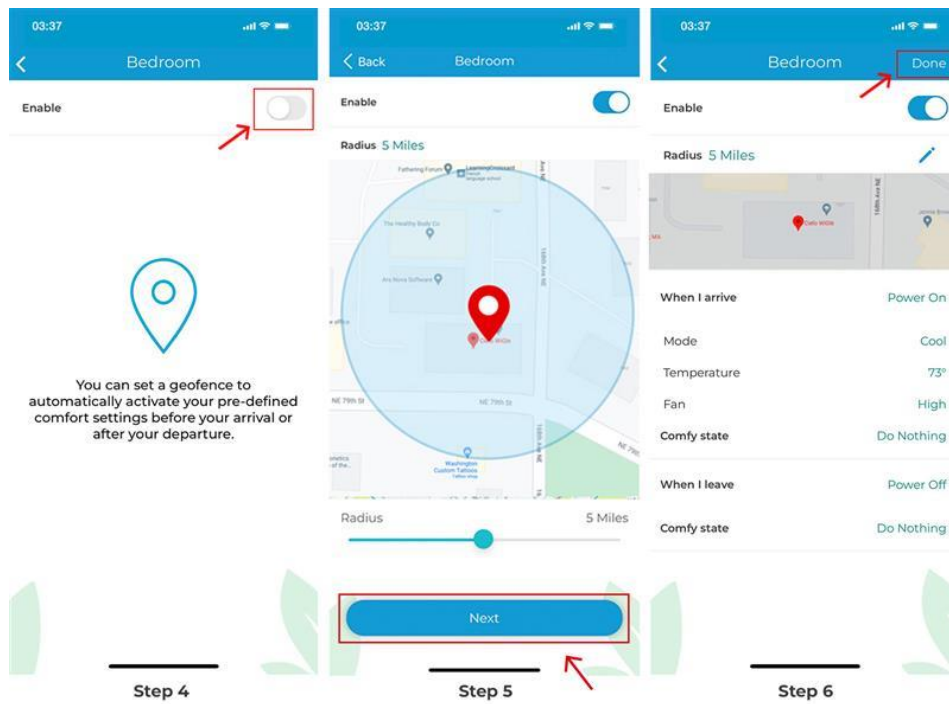
**Step 3:** Tap on 'Geofencing'.



**Step 4:** Toggle the slider to enable Location Control, as shown in the red box.

**Step 5:** You will see your current location on the map. Set a geofence range for your unit between 1 - 10 Miles using the slider. Entering or exiting this range will trigger your mini-split ON/ OFF. Tap on 'Next'.

**Step 6:** Select your desired settings to be performed when you enter or exit the pre-set location and tap on 'Done'. Once location controls are triggered, you will get a notification in your app timeline.



## Setting up Temperature Range Lock

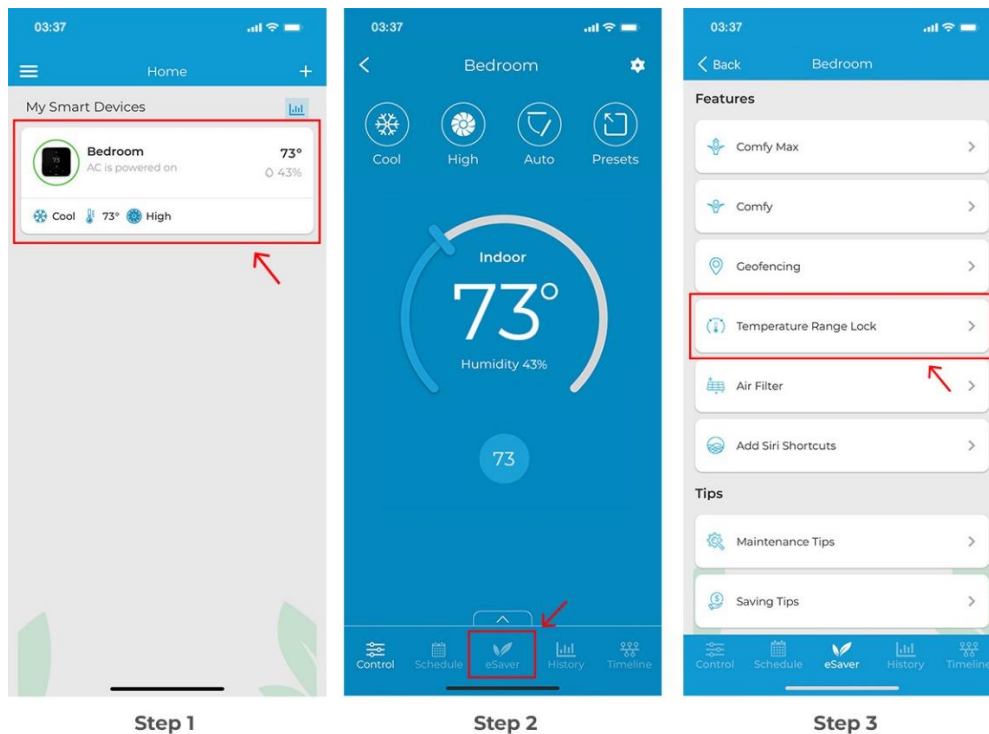
Temperature Range Lock allows you to set a minimum and maximum temperature value so that your mini-split runs within that range.

You can set up a temperature range lock for your mini-split by performing these steps via the Cielo Home app:

**Step 1:** On the Home screen, tap on the Breez Edge you want to set the temperature range lock on.

**Step 2:** Tap on 'eSaver' in the navigation bar.

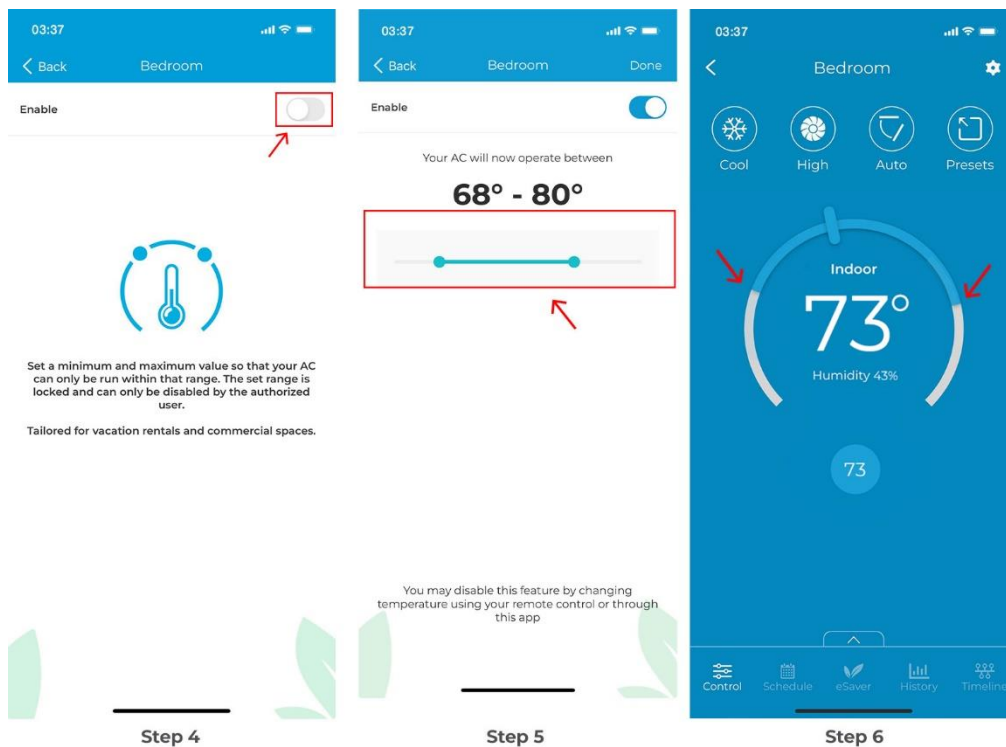
**Step 3:** Tap on 'Temperature Range Lock'.



**Step 4:** Toggle the slider to enable the range lock, as shown in the red box.

**Step 5:** Choose your preferred temperature range. Tap on 'Done'.

**Step 6:** Now the device control screen temperature slider will be restricted to the temperature range specified. The white region on the temperature slider is inaccessible.



**Note:** Setting a temperature range will disable all schedules, location controls, comfy max, and comfy mode in case the selected temperature range conflicts with the previously set values. These modes can be set later again within the specified temperature range. If you have a Preset outside the set temperature range, you'll have to edit the preset in order to enable temperature range control.

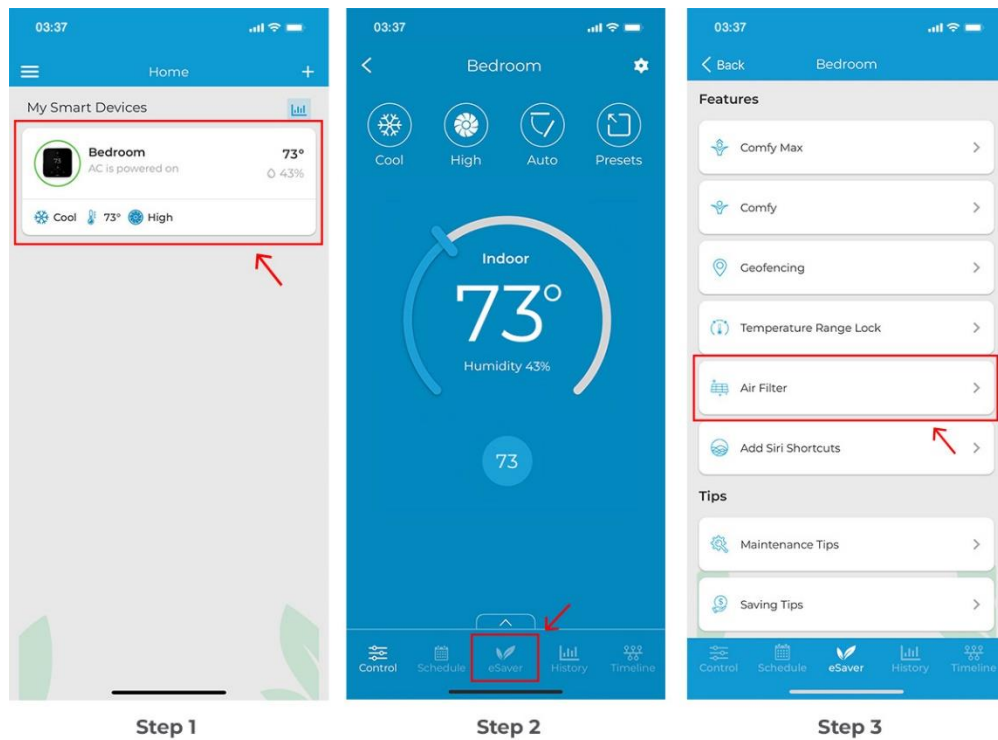
### Checking Your Air Filter Status

You can check the live air filter status of your mini-split. Simply follow the steps listed below:

**Step 1:** On the Home screen, tap on the Breez Edge you want to check the air filter status for.

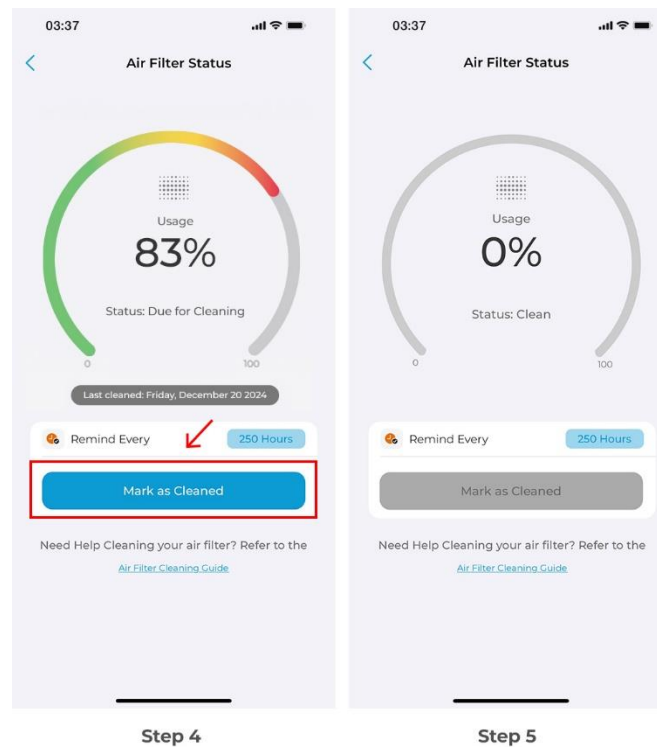
**Step 2:** Tap on 'eSaver' in the navigation bar.

**Step 3:** Tap on 'Air Filter'.



**Step 4:** You will see your current air filter status since registration (or since the last cleaning). When the range is about to fill up, manually remove the air filter and clean it. Once done, place the filter back into the mini-split. Tap on 'Mark as Cleaned'. Additionally, you can set the number of hours after which you want to be notified for the next cleaning.

**Step 5:** Your filter status has now begun a new cycle.

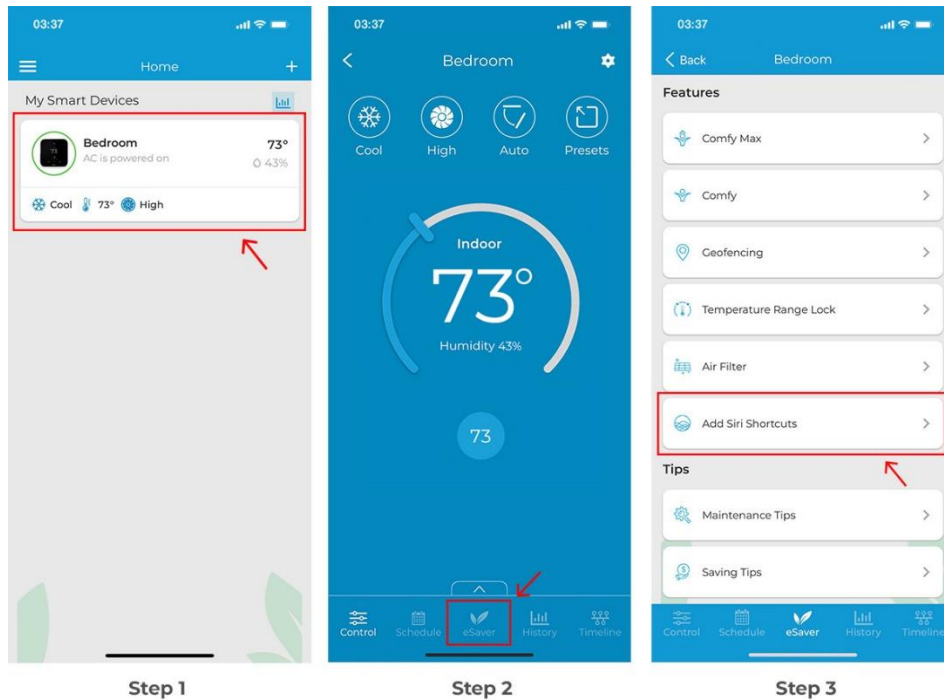


## Adding Siri Shortcuts to Cielo Home (For iOS users)

**Step 1:** On the Home screen, tap on the Breez Edge you want to add Siri Shortcuts for.

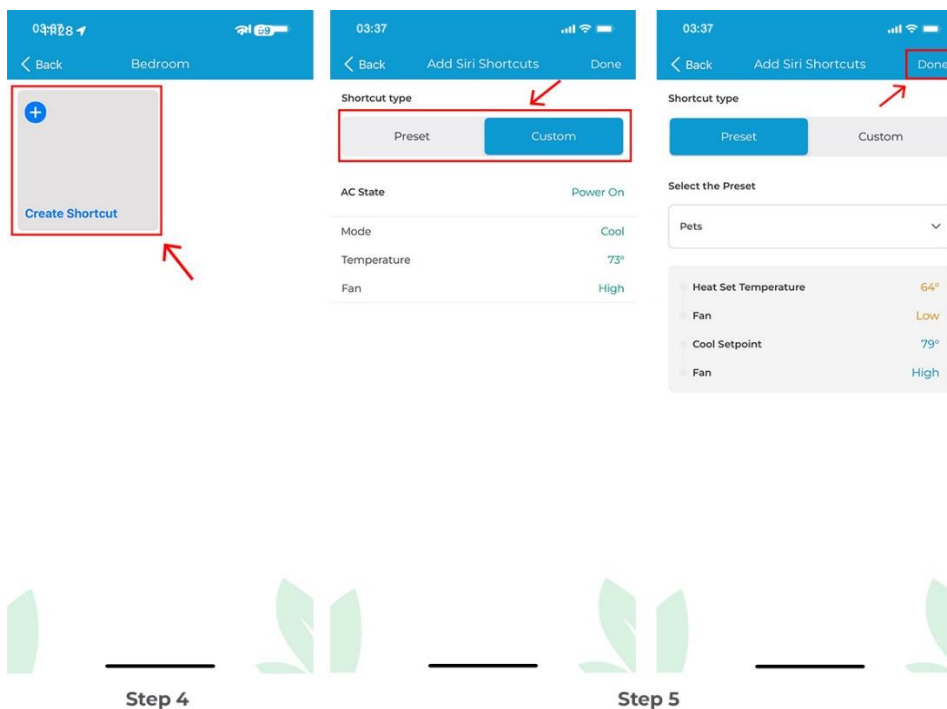
**Step 2:** Tap on 'eSaver' in the navigation bar.

**Step 3:** Tap on 'Siri Shortcuts'.



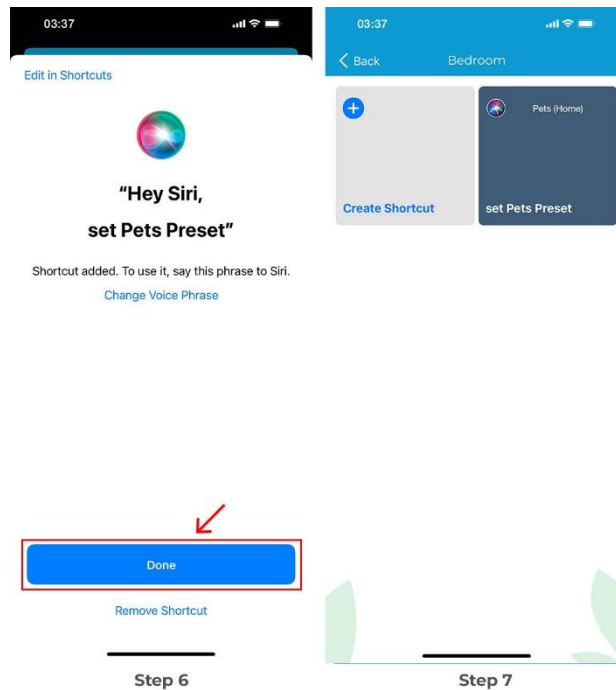
**Step 4:** Tap on 'Create Shortcut' to make a new Siri Shortcut.

**Step 5:** Choose whether you want to add "Preset" as a shortcut or select "Custom" and enter the desired settings. You can set your mini-split operating mode, temperature set point, and fan speed. Tap on 'Done'.



**Step 6:** Next, enter the phrase you want the Shortcut to be activated on. In this example, 'Pet Preset'. Tap on 'Done'.

**Step 7:** All your currently active Siri Shortcuts will now be displayed.

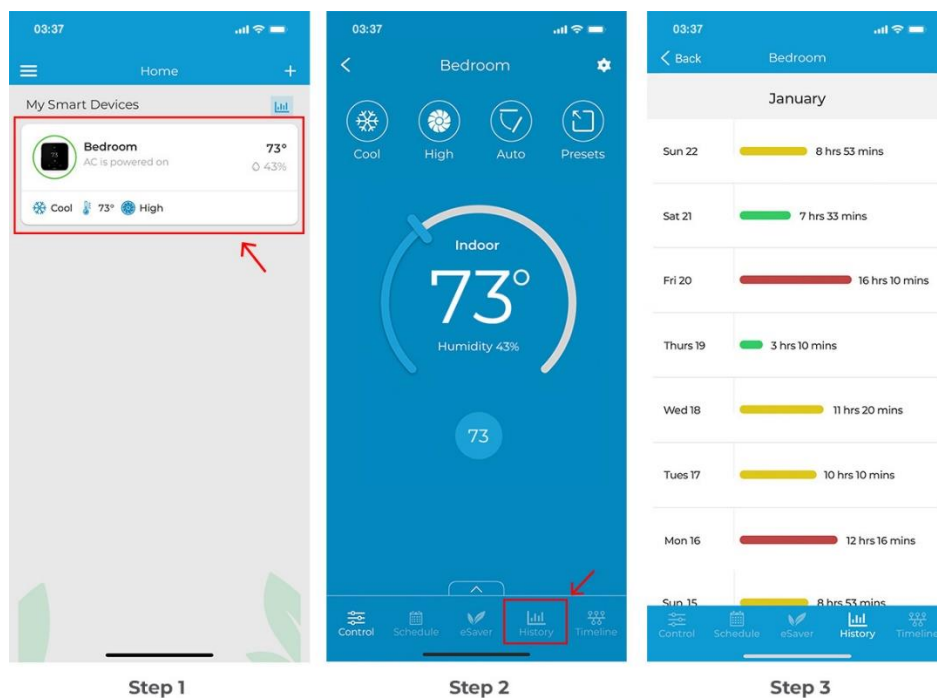


## Checking Usage History

**Step 1:** On the Home screen, tap on the Breez Edge you want to check usage history for.

**Step 2:** On the Control screen, Tap on 'History'.

**Step 3:** Your 30-day usage summary should appear on the screen. Tap on any day to learn more details about your detailed usage history.



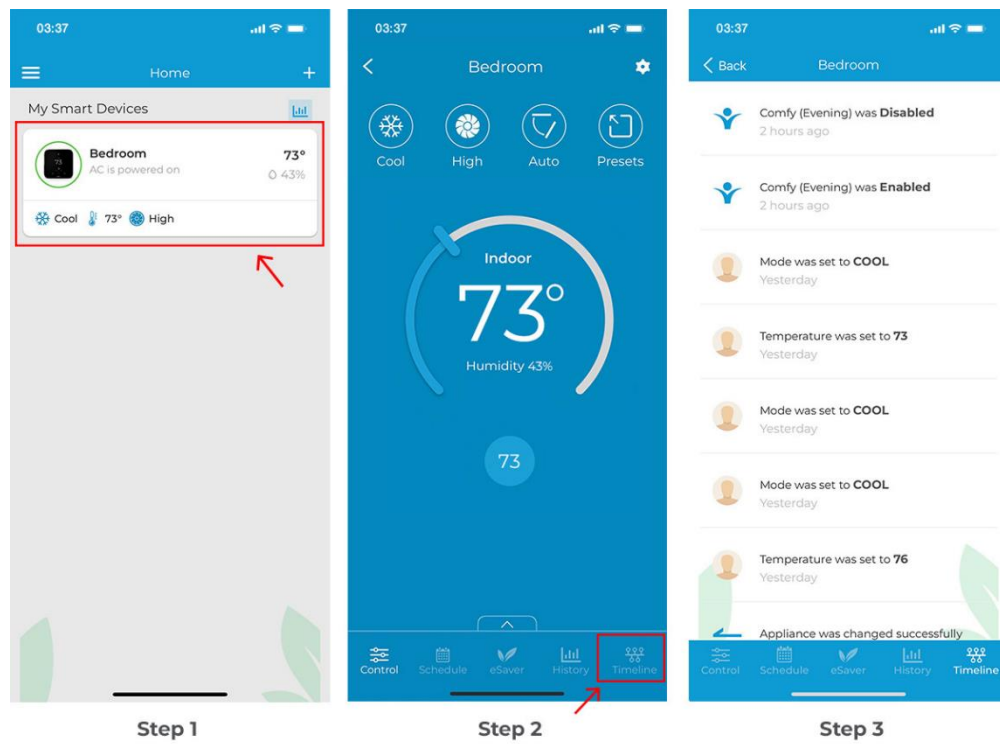
## Checking Timeline of Actions

Timeline of Actions provides details of all the changes happening on your unit, including actions performed through the app, the remote, or over voice commands. For instance, you can check when the AC is being turned on and off.

**Step 1:** On the Home screen, tap on the Breez Edge you want to check the timeline of.

**Step 2:** On the Control screen, Tap on 'Timeline'.

**Step 3:** You'll see a complete list of actions performed over the last 90 days.



## Editing a preset

You can enjoy a truly tailored experience with predefined comfort settings, including Home, Away, Sleep, and Pets.

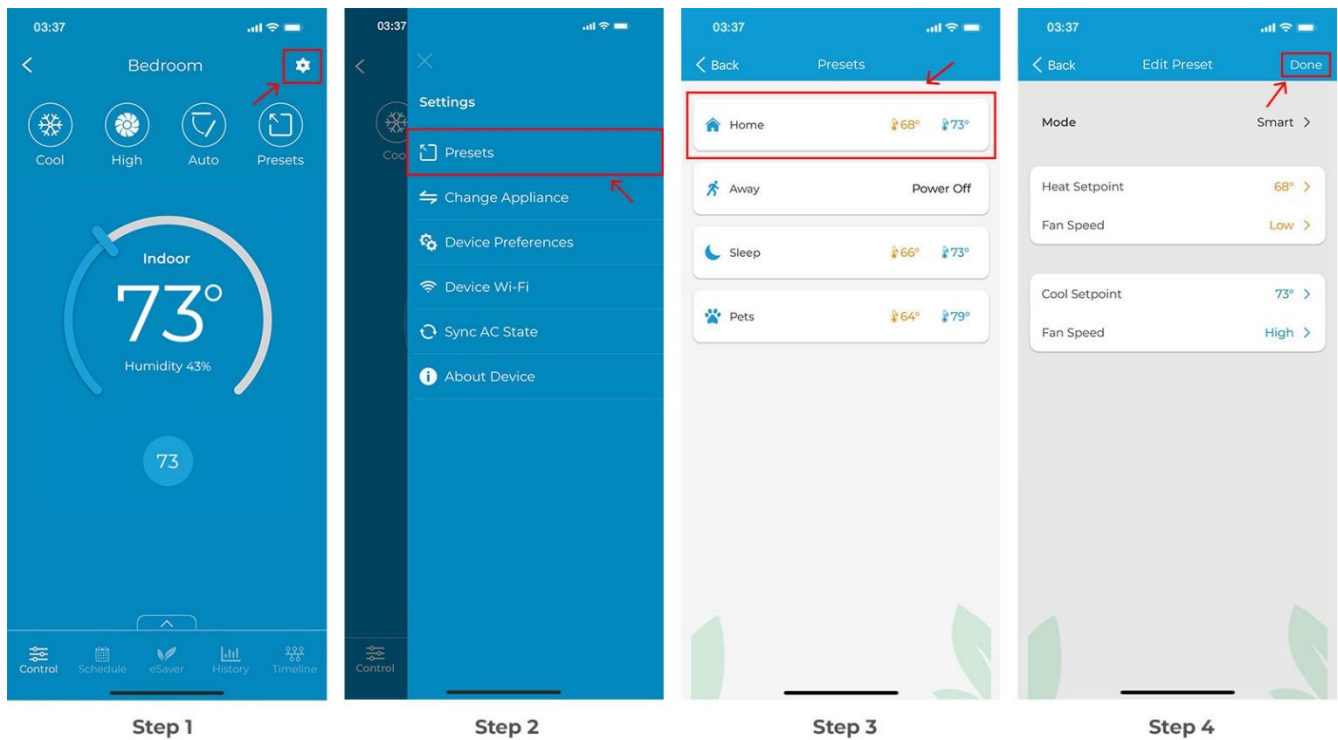
**Step 1:** From the device control screen, tap on the 'Settings' icon on the top right corner.

**Step 2:** Tap on 'Preset'.

**Step 3:** Select the Preset you want to edit.

**Step 4:** Make your desired changes for mode, set point and fan speed. Tap on the 'Done'.

Your Preset has been updated successfully.

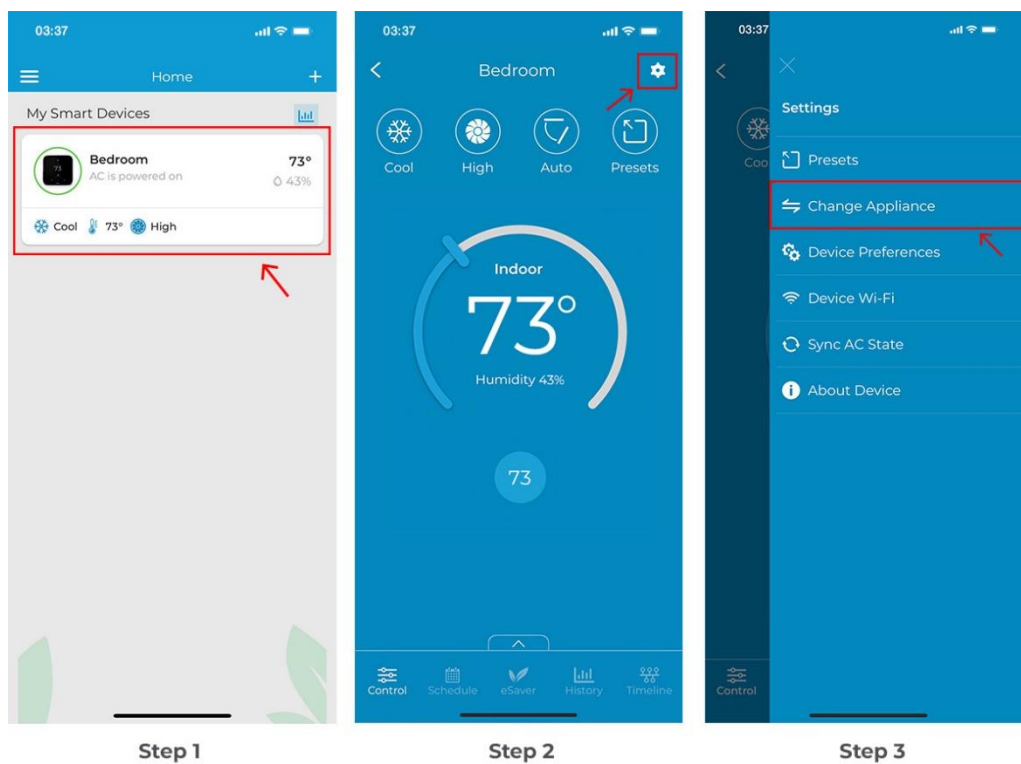


## Change Appliance (Manufacturer/Model Number)

**Step 1:** On the Home screen, tap on the Breez Edge you want to change the appliance for.

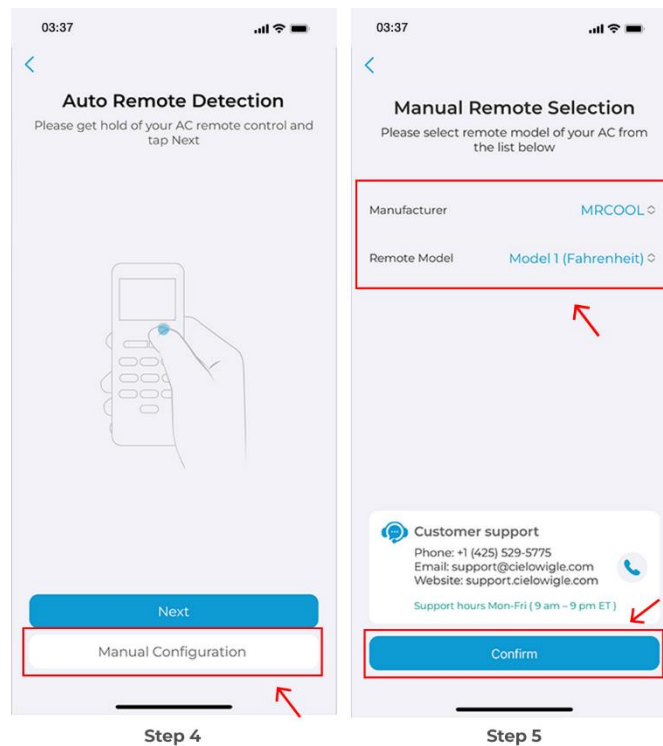
**Step 2:** Tap on the 'Settings' icon on the top right.

**Step 3:** Tap on 'Change Appliance'.



**Step 4:** Tap on 'Manual Configuration'.

**Step 5:** Select the 'Manufacturer' & 'Remote Model' of your AC from the drop-down list and tap 'Confirm'.

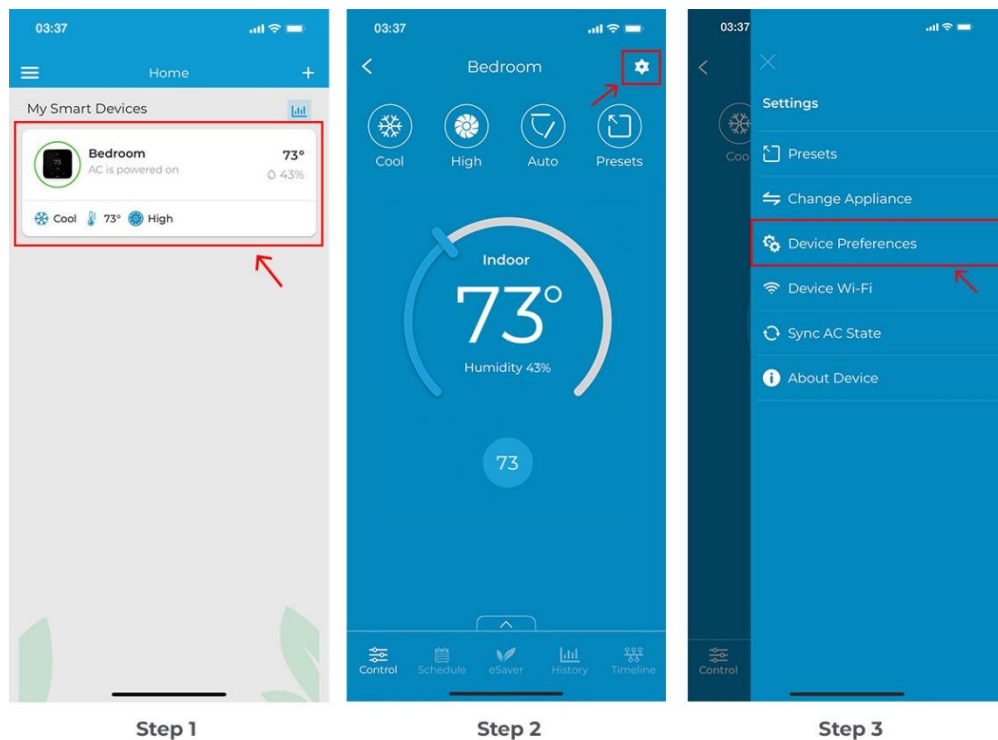


### Changing Device Name (e.g. bedroom, lounge etc.)

**Step 1:** On the Home screen, tap on the Breez Edge you want to change the name of.

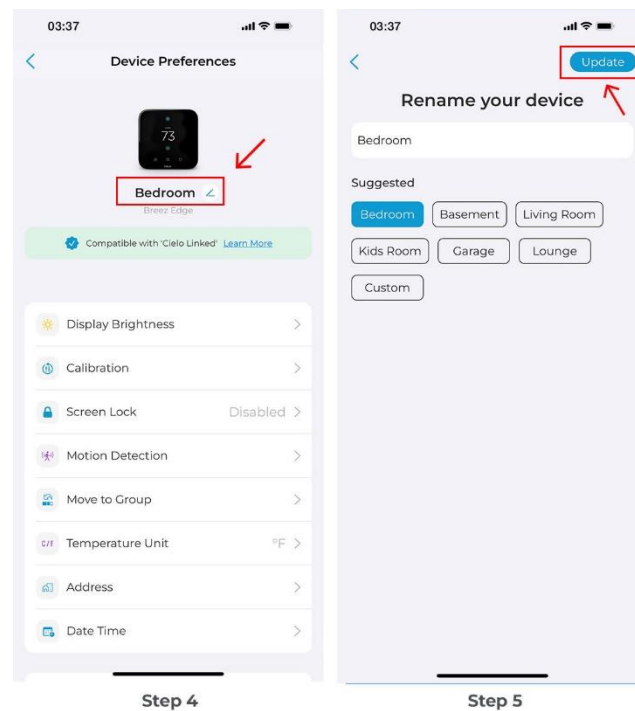
**Step 2:** Tap on the 'Settings' icon on the top right.

**Step 3:** Tap on 'Device Preferences'.



**Step 4:** Tap on the pencil icon in front of the device name.

**Step 5:** Select the new name from a list of suggested names or type a custom name and tap on the 'Update' button. The device name is now changed.

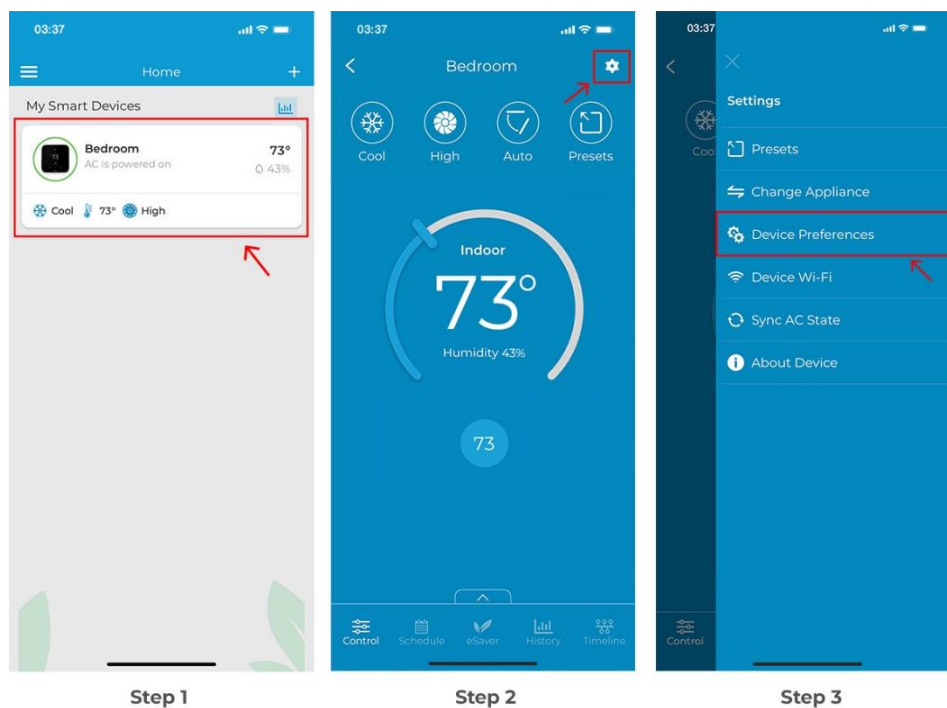


## Breez Edge Display Settings

**Step 1:** On the Home screen, tap on the Breez Edge

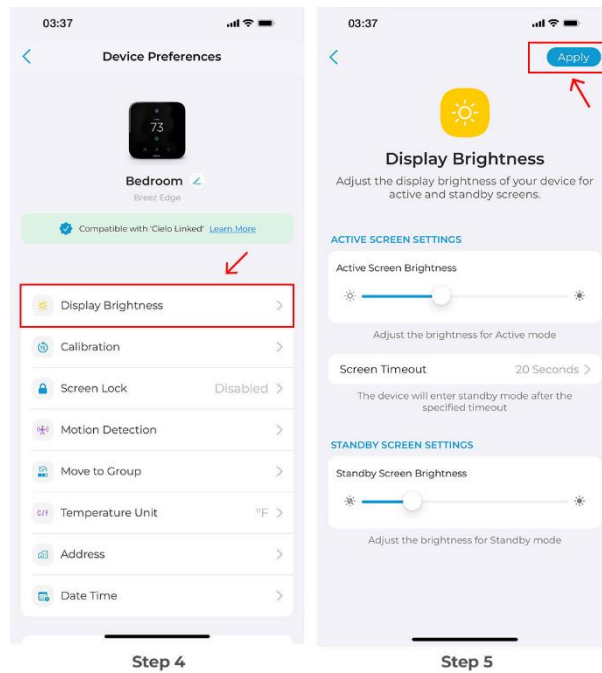
**Step 2:** Tap on the 'Settings' icon on the top right.

**Step 3:** Tap on 'Device Preferences'.



**Step 4:** In Device preferences, tap on 'Display Brightness'.

**Step 5:** Adjust the active screen brightness and standby screen brightness as needed. You can also adjust the screen timeout.



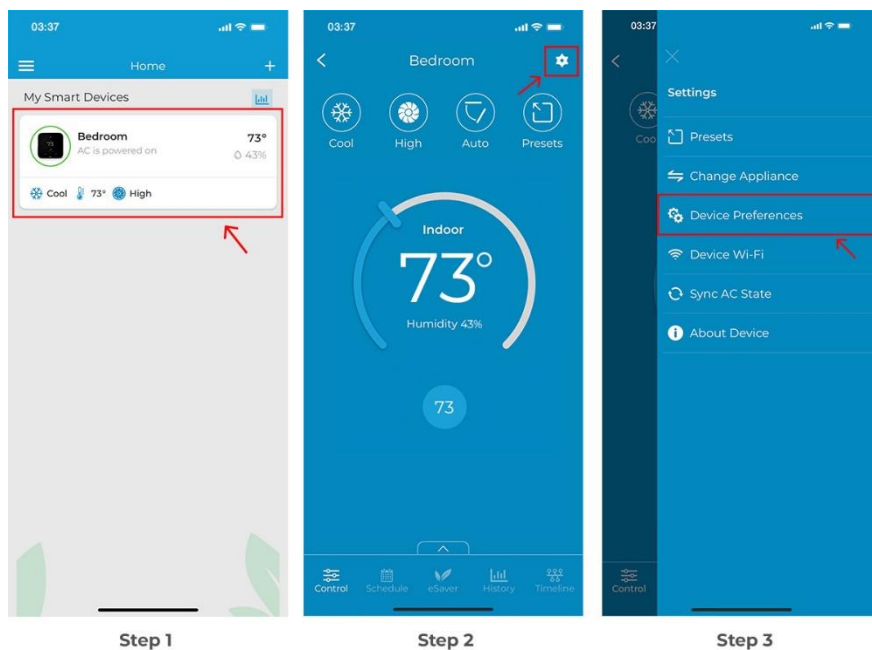
## Calibrate Room Temperature

Temperature calibration helps correct inaccuracies caused by differences between the ambient temperature near your Breez Edge and the rest of your room.

**Step 1:** On the Home screen, tap on Breez Edge.

**Step 2:** Tap on the 'Settings' icon on the top right.

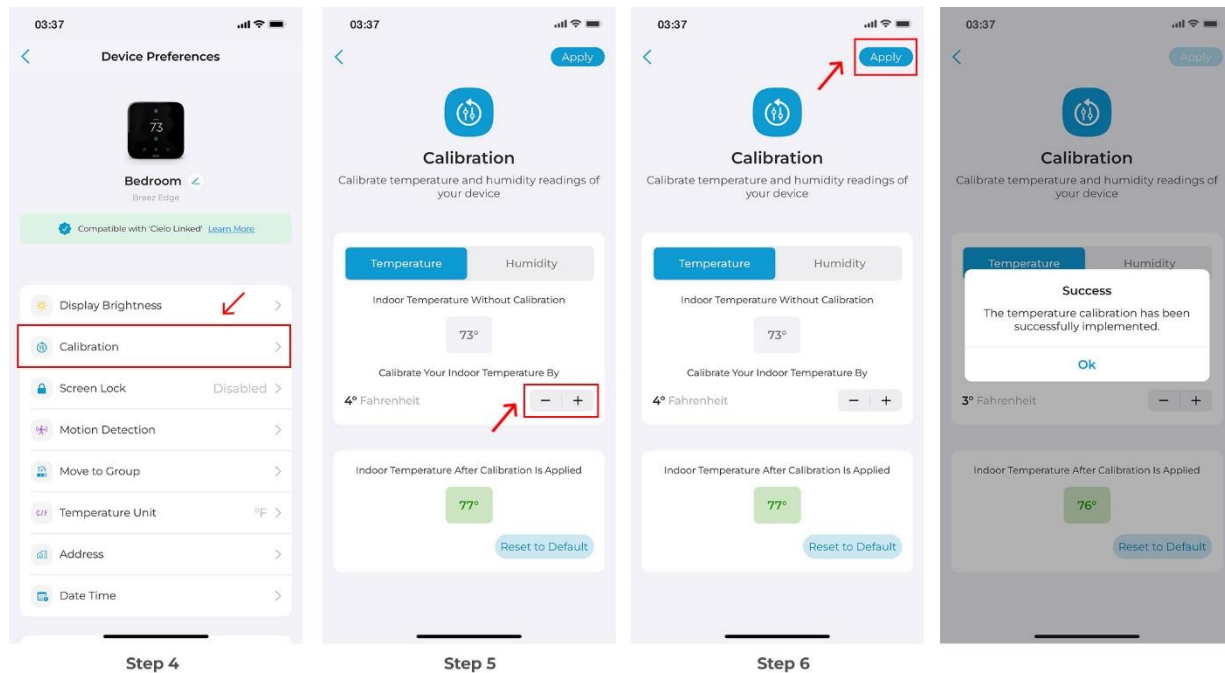
**Step 3:** Tap on 'Device Preferences'.



**Step 4:** Tap on 'Calibration'.

**Step 5:** Calibrate the temperature by tapping - or + according to your requirements.

**Step 6:** Tap on 'Apply'.



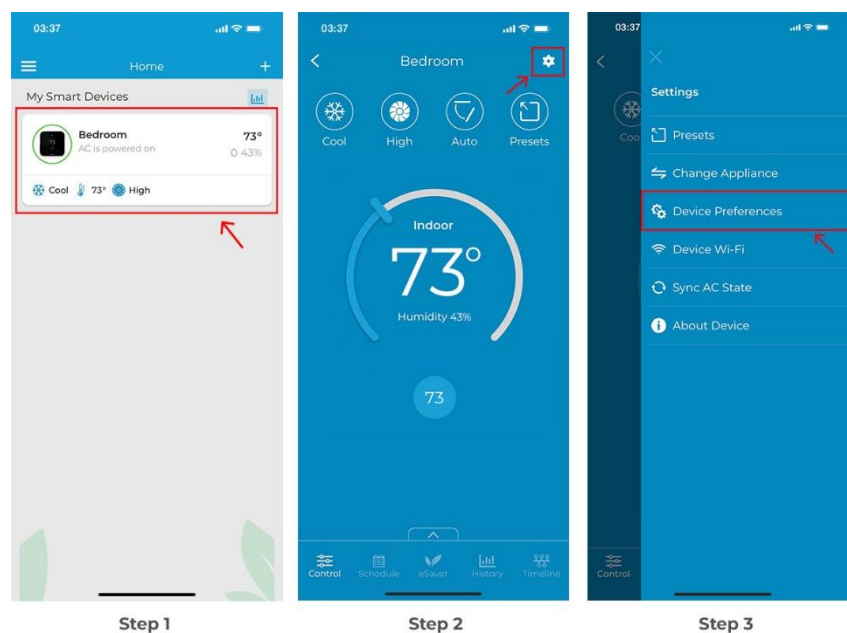
## Calibrate Room Humidity

Humidity calibration helps correct inaccuracies caused by differences between the humidity levels near your Breez Edge and the rest of your room.

**Step 1:** On the Home screen, tap on Breez Edge.

**Step 2:** Tap on the 'Settings' icon on the top right.

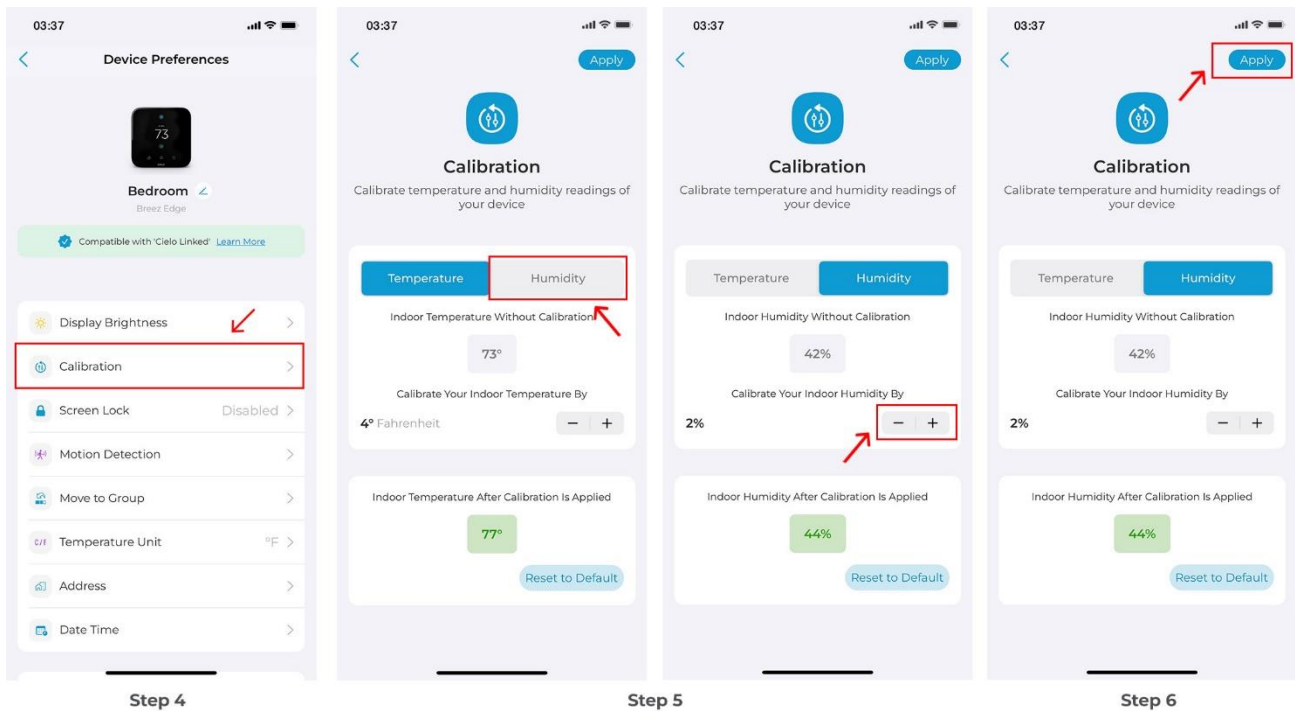
**Step 3:** Tap on 'Device Preferences'.



**Step 4:** Tap on 'Calibration'.

**Step 5:** Tap on 'Humidity' tab. Calibrate the humidity by tapping - or + according to your requirements.

**Step 6:** Tap on 'Apply'.

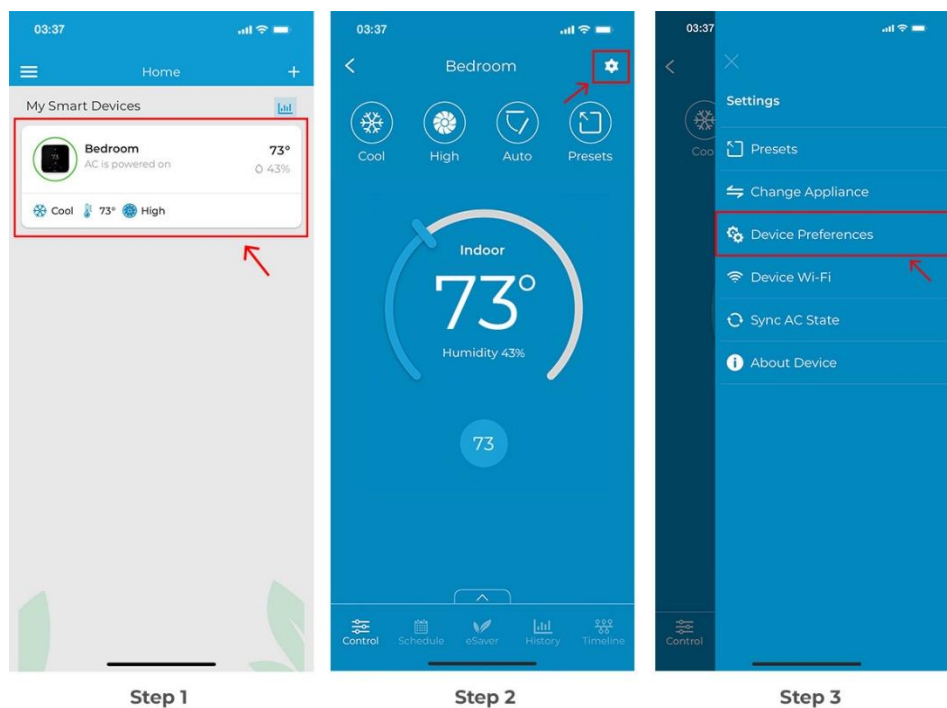


## Locking Your Breez Edge With a Passcode

**Step 1:** On the Home screen, tap on the Breez Edge you want to lock.

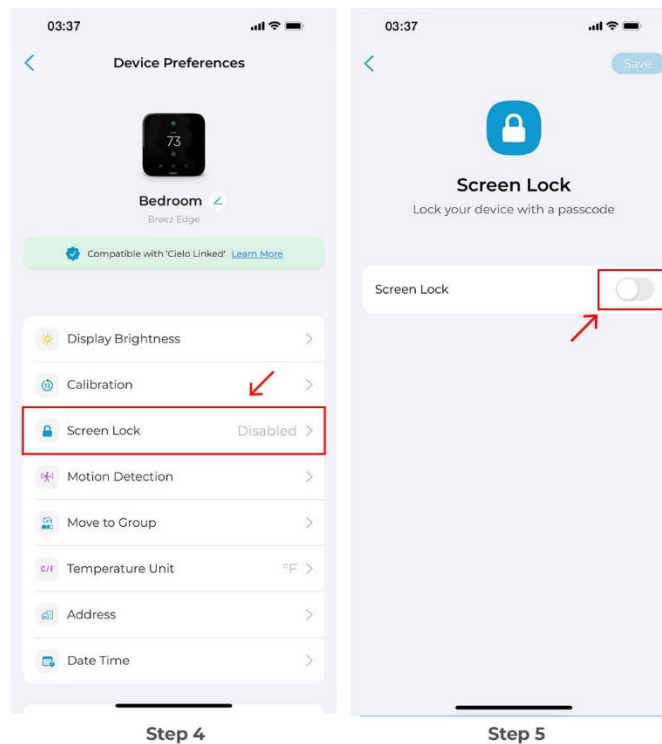
**Step 2:** Tap on the 'Settings' icon at the top right corner.

**Step 3:** Tap on 'Device Preferences'.



**Step 4:** Tap on 'Screen Lock'.

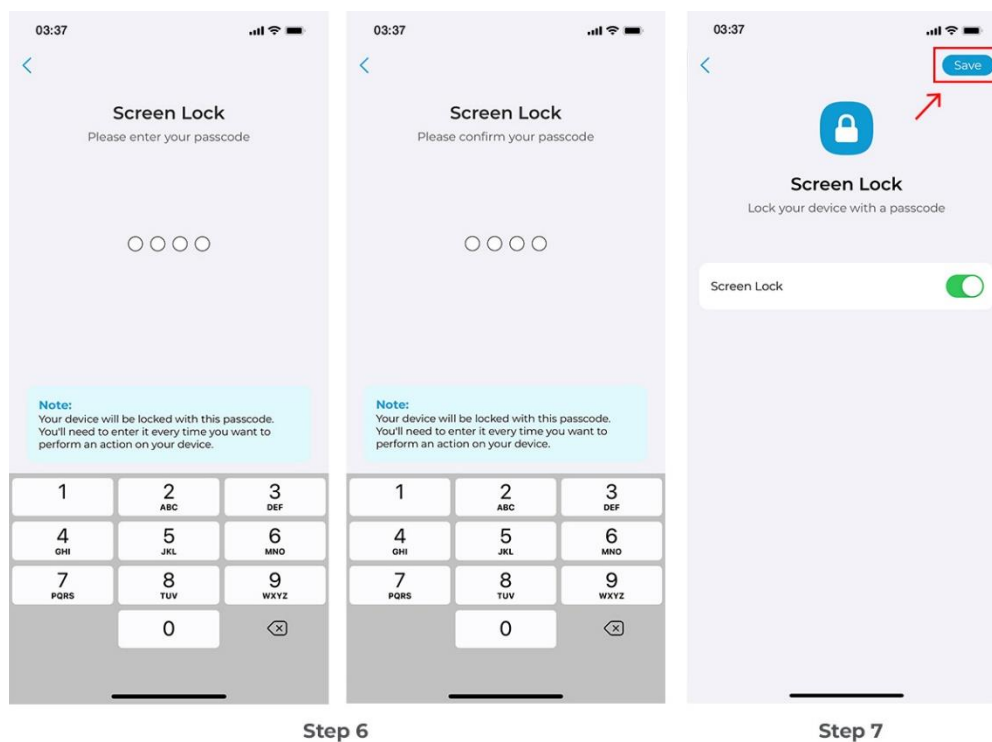
**Step 5:** Toggle the screen lock button to set your passcode.



**Step 6:** Enter your passcode. Re-enter to confirm the passcode.

**Step 7:** Tap on 'Save'.

Your Breez Edge screen will be locked. You can unlock it using your set passcode.



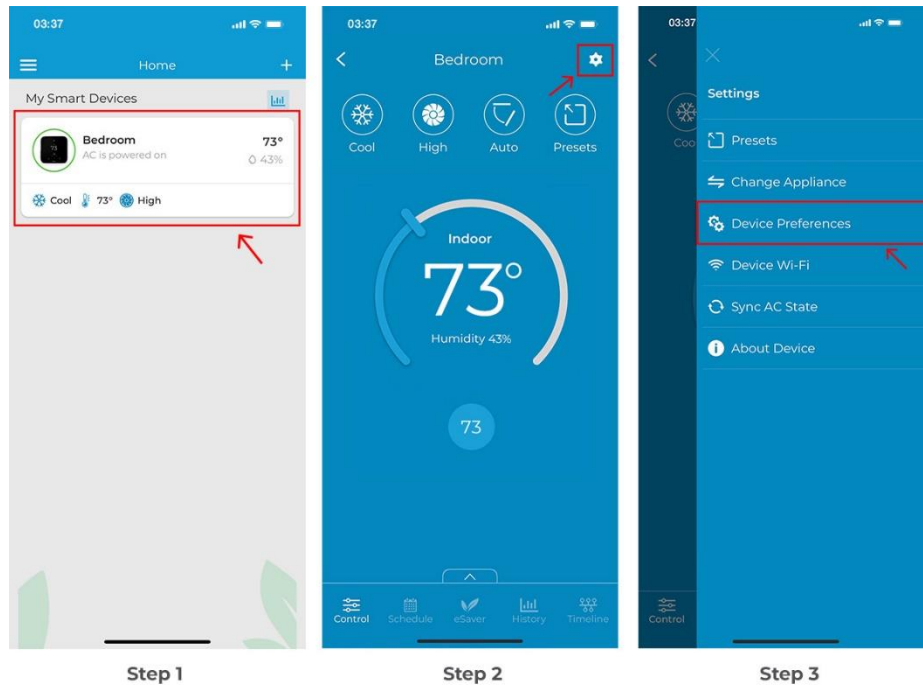
## Motion Detection

Your Breez Edge can automatically detect your presence and activate the control screen. You can also set it up to switch from Away to Home settings when motion is detected. Here's how to do it:

**Step 1:** On the Home screen, tap on the Breez Edge.

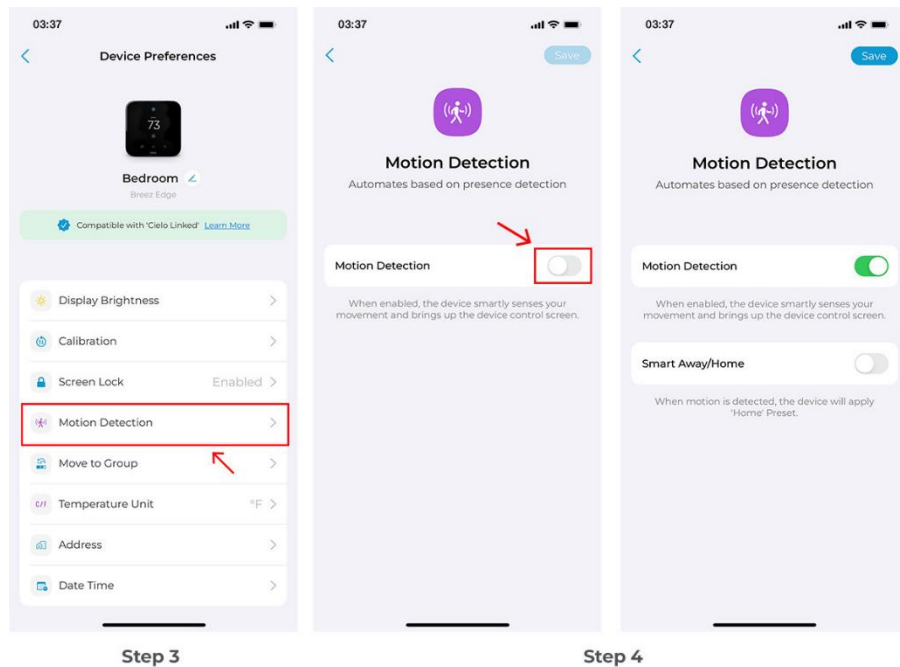
**Step 2:** Tap on the 'Settings' icon at the top right corner.

**Step 3:** Tap on 'Device Preferences'.



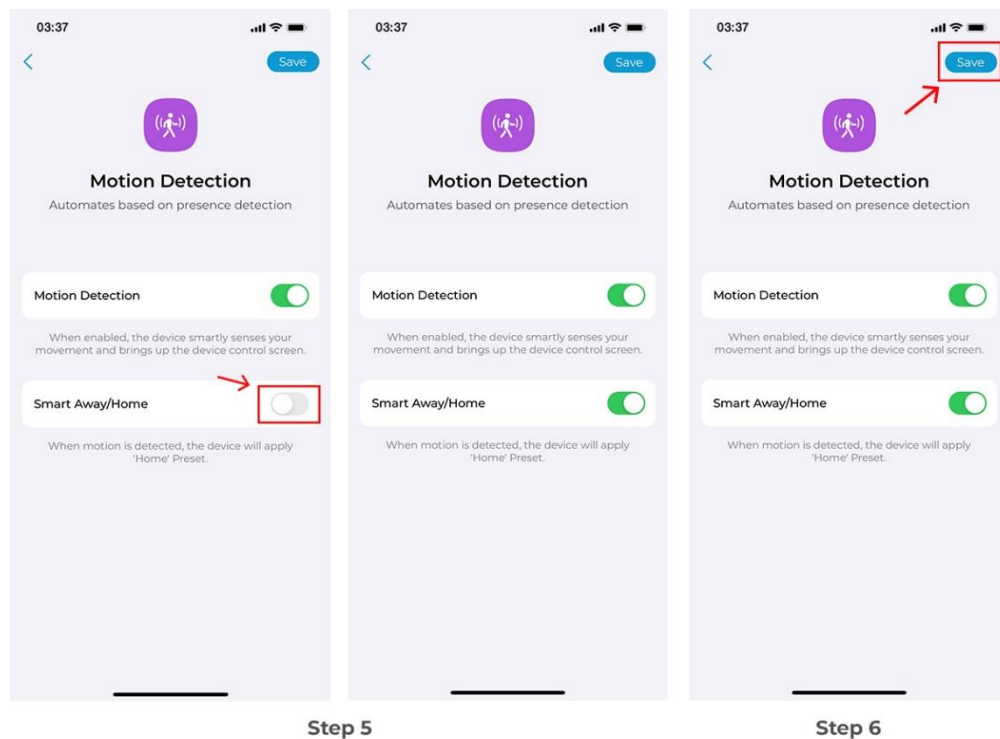
**Step 3:** Tap on 'Motion Detection'.

**Step 4:** Toggle on Motion Detection to let Breez Edge sense movement and bring up the device control screen.



**Step 5:** Toggle on Smart Home/Away. When motion is detected, the system will automatically apply the Home Preset.

**Step 6:** Tap on 'Save'.



## Group Settings of your connected mini-splits

A group will allow you to control all your registered devices together with a simple tap.

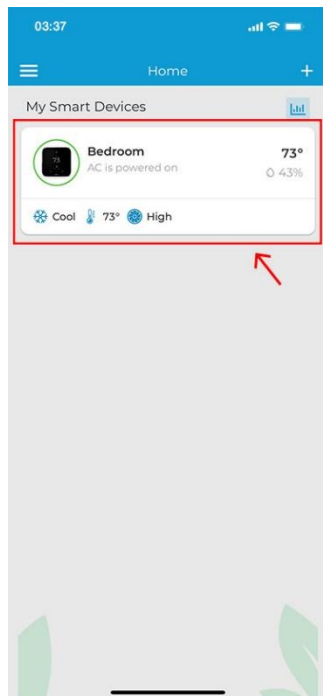
### 1. Creating a group

To create a Group in the Cielo Home app, follow these steps:

**Step 1:** On the Home screen, tap on your Breez Edge device.

**Step 2:** Tap on the 'Settings' icon on the top right.

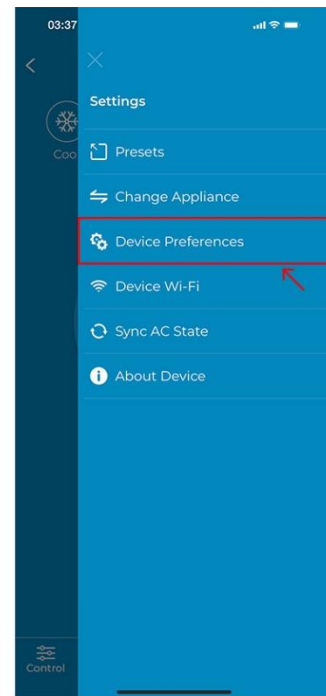
**Step 3:** Tap on 'Device Preferences'.



Step 1



Step 2

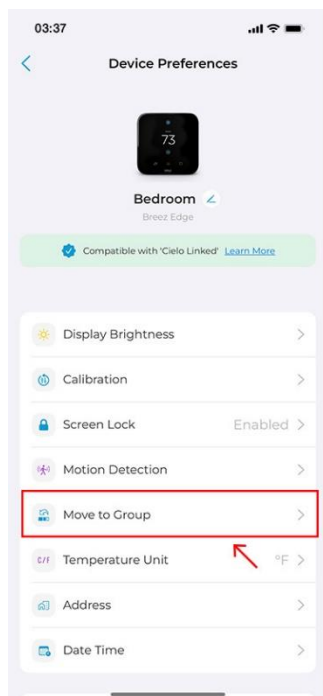


Step 3

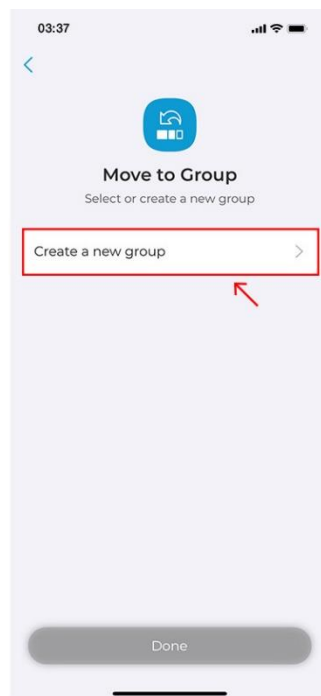
**Step 4:** Tap on 'Move to Group'.

**Step 5:** Tap on Create a new group.

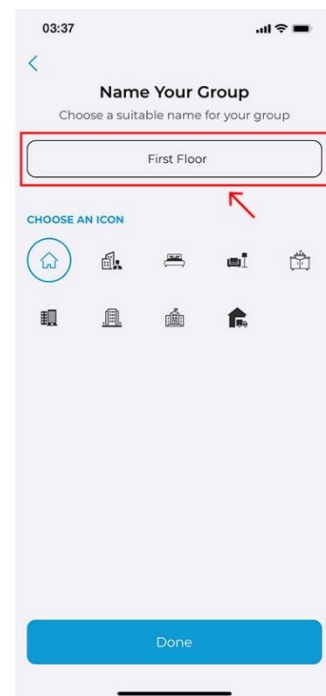
**Step 6:** Give your group a name (e.g., First floor, Basement, etc.)



Step 4



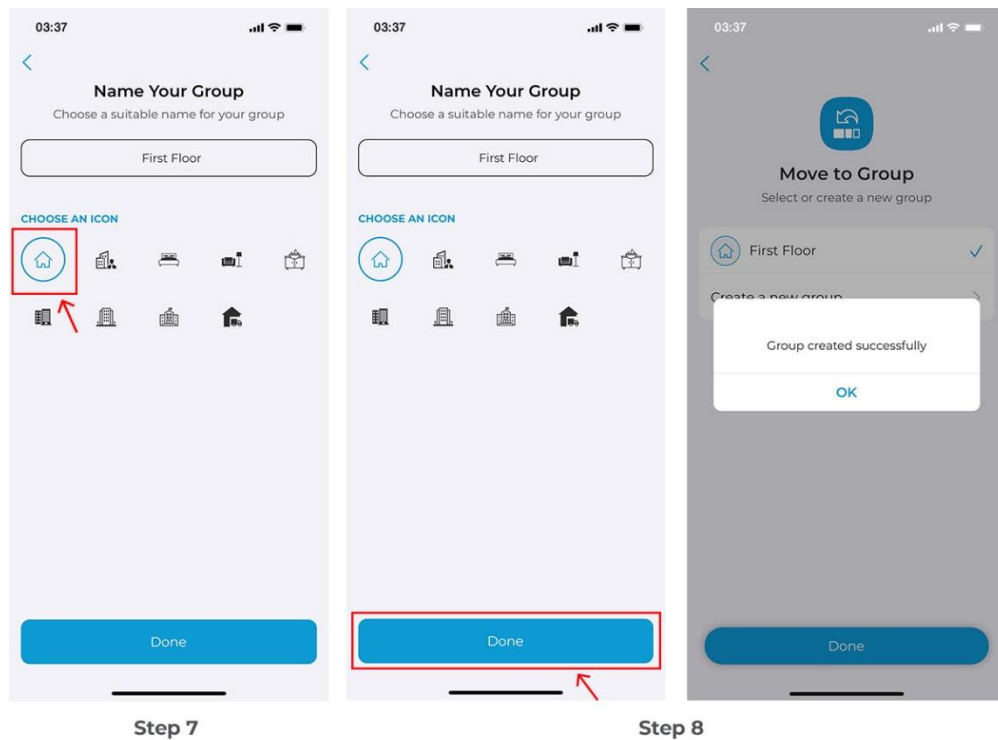
Step 5



Step 6

**Step 7:** Choose an icon.

**Step 8:** Tap on 'Done'. Group is created successfully.

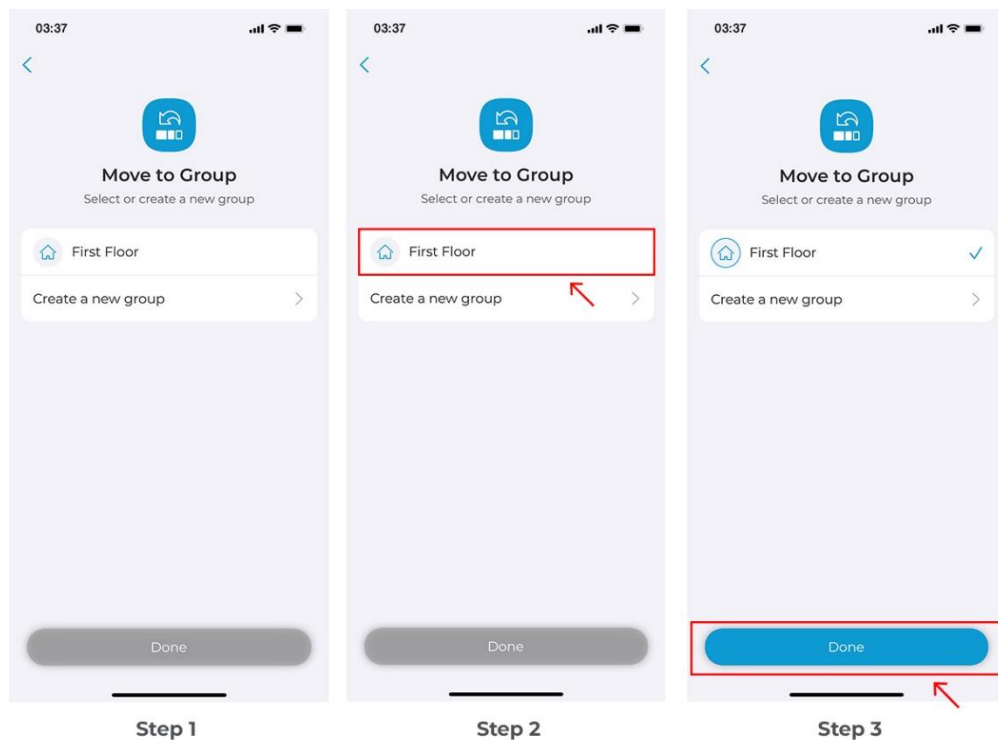


## 2. Adding a Device to a Group

**Step 1:** Once the group is created, you will be taken to the 'Move to Group' screen.

**Step 2:** You will see a list of all of your active groups. Tap on the group you wish to move the device to.

**Step 3:** You will see a checkmark next to the group name. Tap on 'Done'.

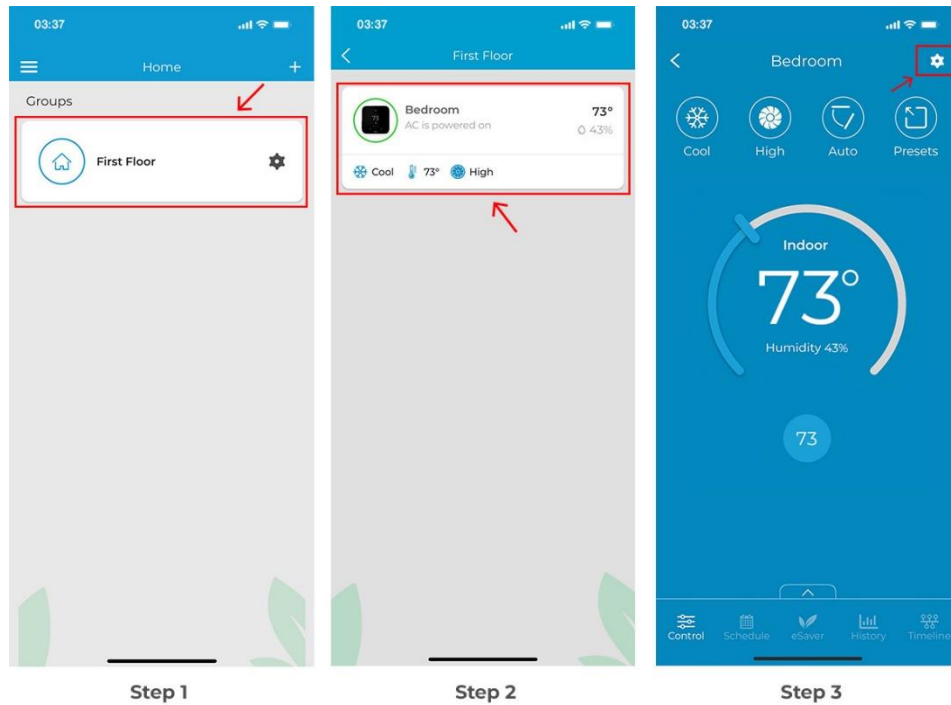


### 3. Removing a Device from a group

**Step 1:** On the Home Screen, go to the 'Groups' section and select your created group.

**Step 2:** Tap on the device you want to remove from your group.

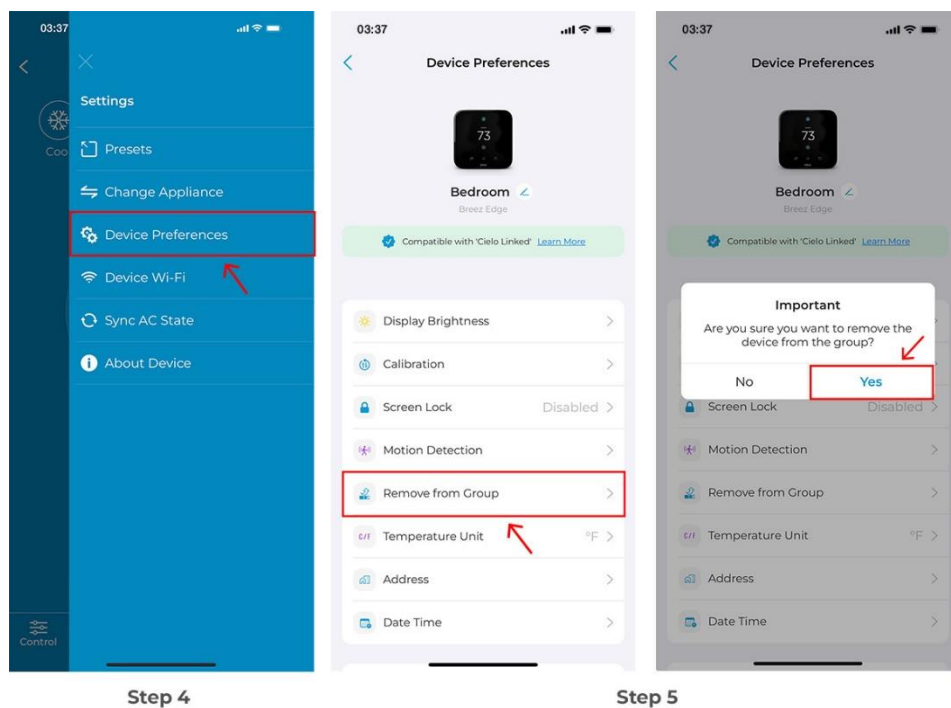
**Step 3:** Go to the 'Settings' on the top right.



**Step 4:** Tap on 'Device Preferences'.

**Step 5:** Tap on 'Remove from Group.' Tap on 'Yes'.

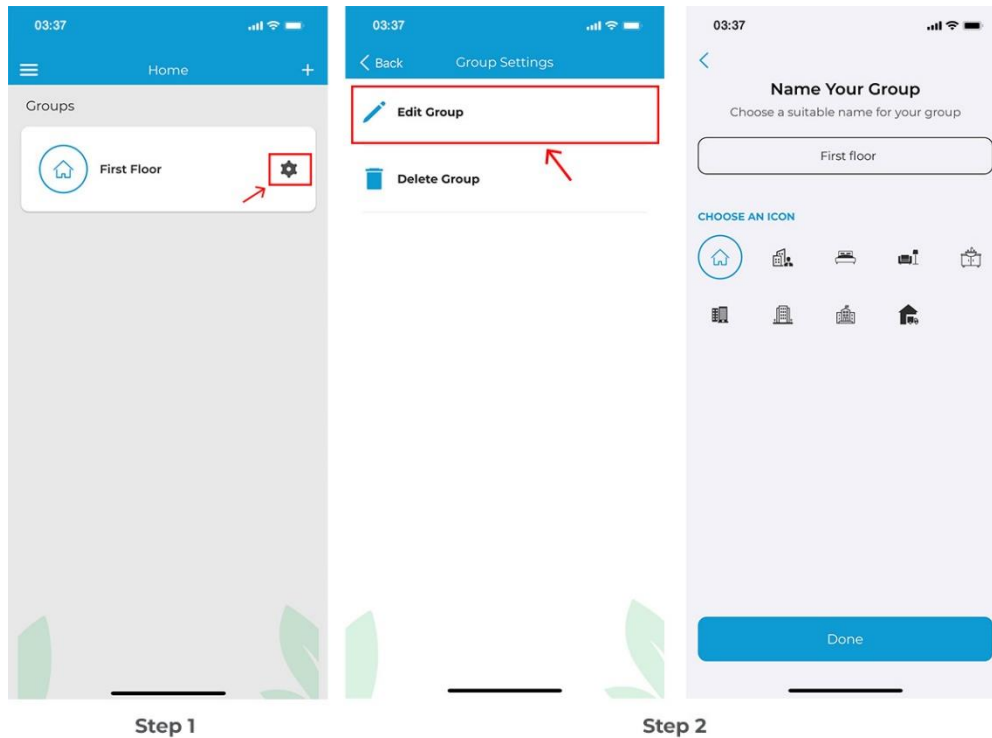
The device was removed from the group successfully.



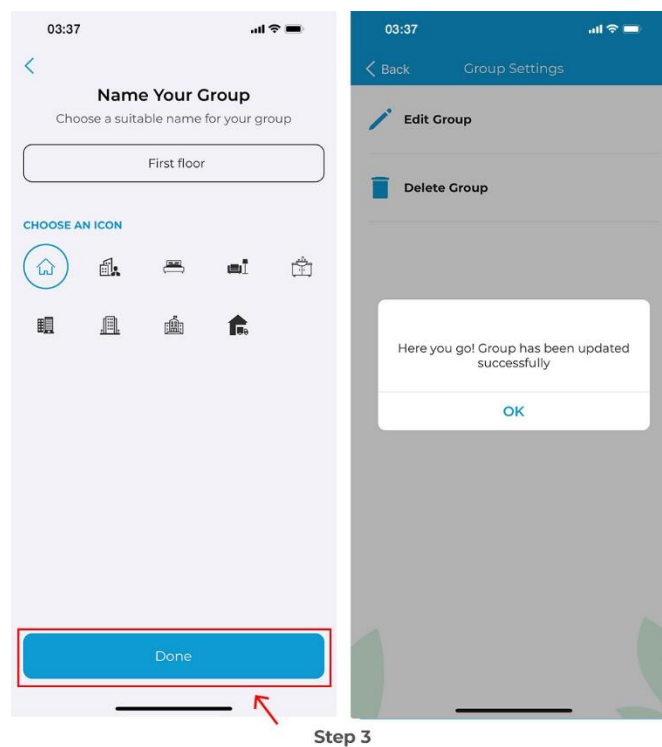
#### 4. Editing a Group

**Step 1:** Tap on the 'Settings' icon of the group you wish to edit.

**Step 2:** In group settings, tap on 'Edit Group'. You can change the icon and name of the group as you desire.



**Step 3:** Tap on 'Done'.

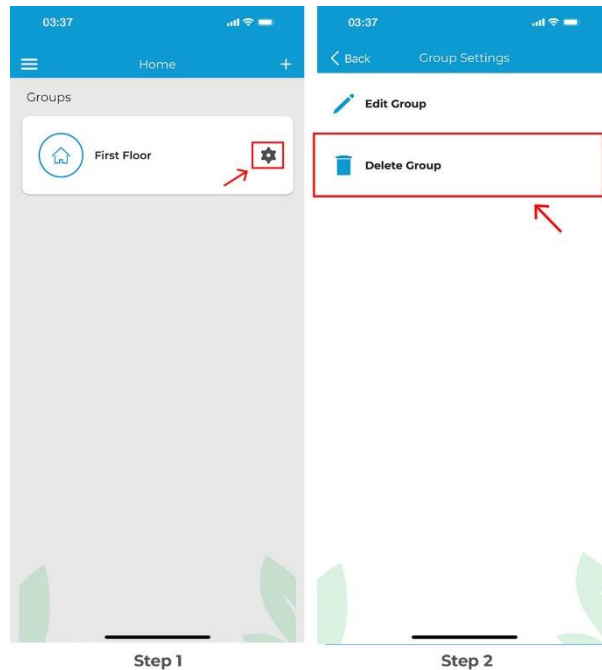


## 5. Deleting a Group

**Note:** To delete a group, you have to remove all the devices added to it individually. You may not be allowed to delete a group otherwise. To delete a device from a group, refer to Section 3.

**Step 1:** Tap on the 'Settings' icon of the group you wish to edit.

**Step 2:** In group settings, tap on 'Delete Group'.

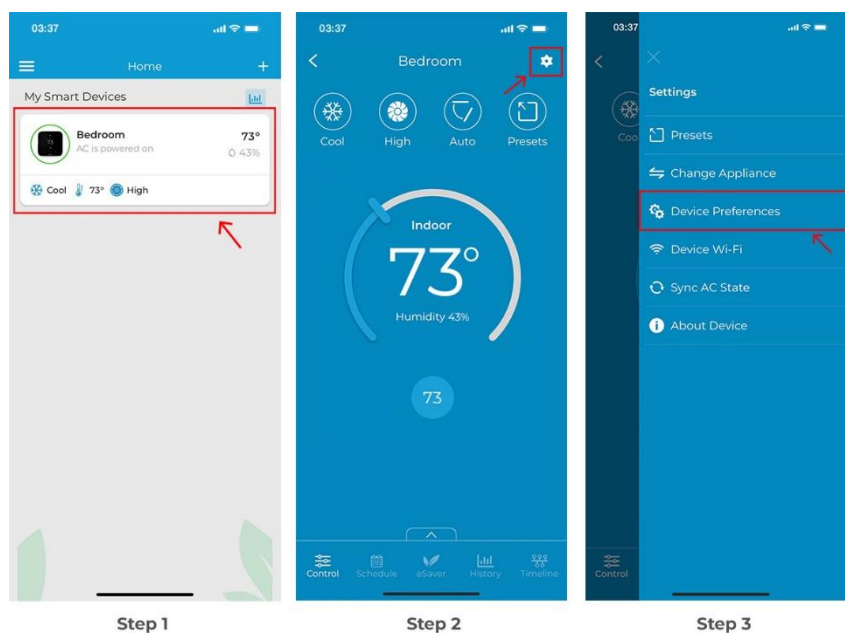


## Switch temperature units between Centigrade and Fahrenheit

**Step 1:** On the Home screen, tap on the Breez Edge you want to change the units of.

**Step 2:** Tap on the 'Settings' icon on the top right.

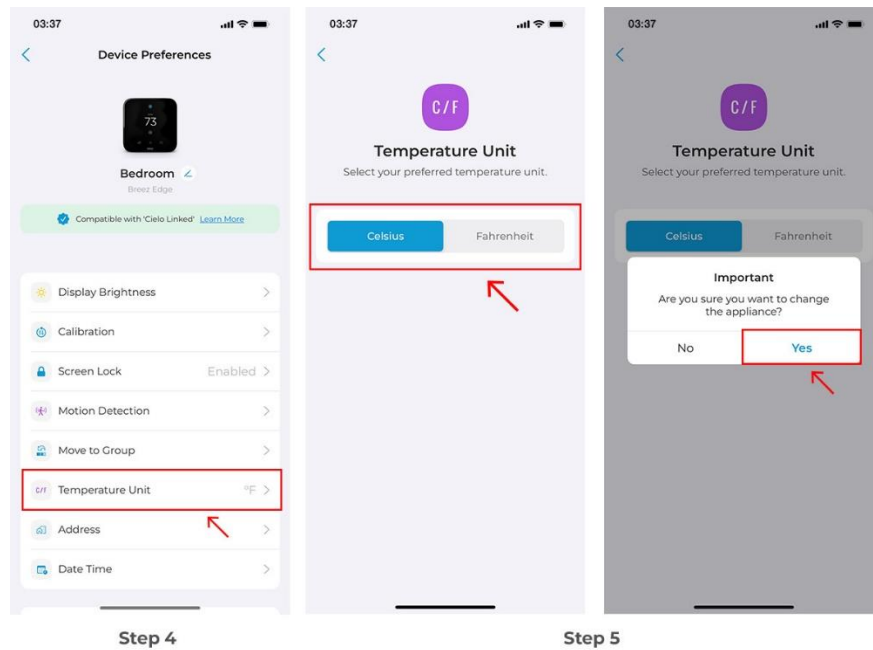
**Step 3:** Tap on 'Device Preferences'.



**Step 4:** Tap on 'Temperature Unit'.

**Step 5:** Select your preferred unit. Tap 'Yes' to proceed.

**Note:** You will be asked if you want to retain your set schedules, usage history, and other settings.



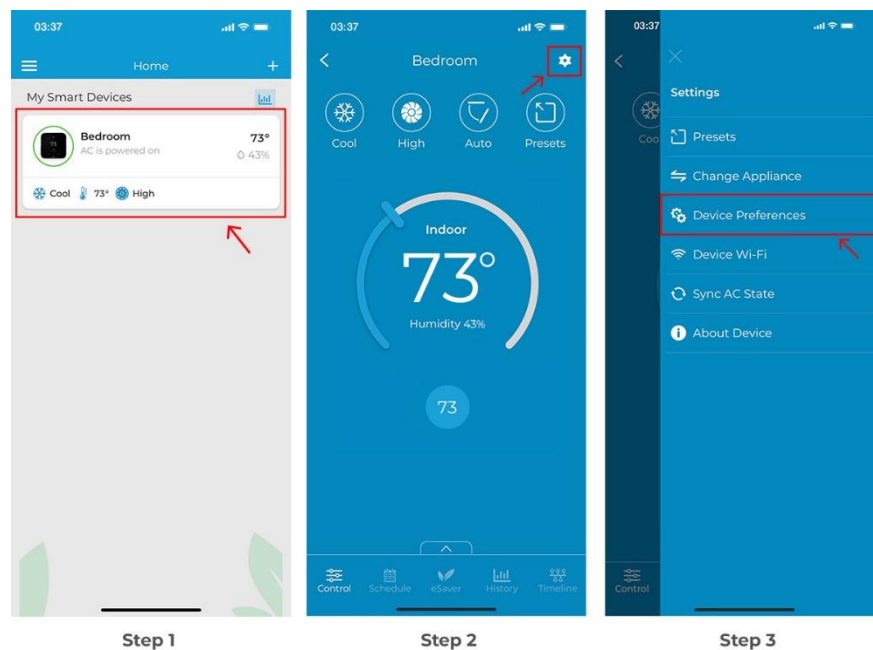
## Adding Address

Add your address to sync weather data. This will allow you to use exciting features like integrated controls (set-up automation based on outdoor temperature).

**Step 1:** On the Home screen, tap on the Breez Edge on which you want to add your address.

**Step 2:** Tap on the 'Settings' icon on the top right.

**Step 3:** Tap on 'Device Preferences'.

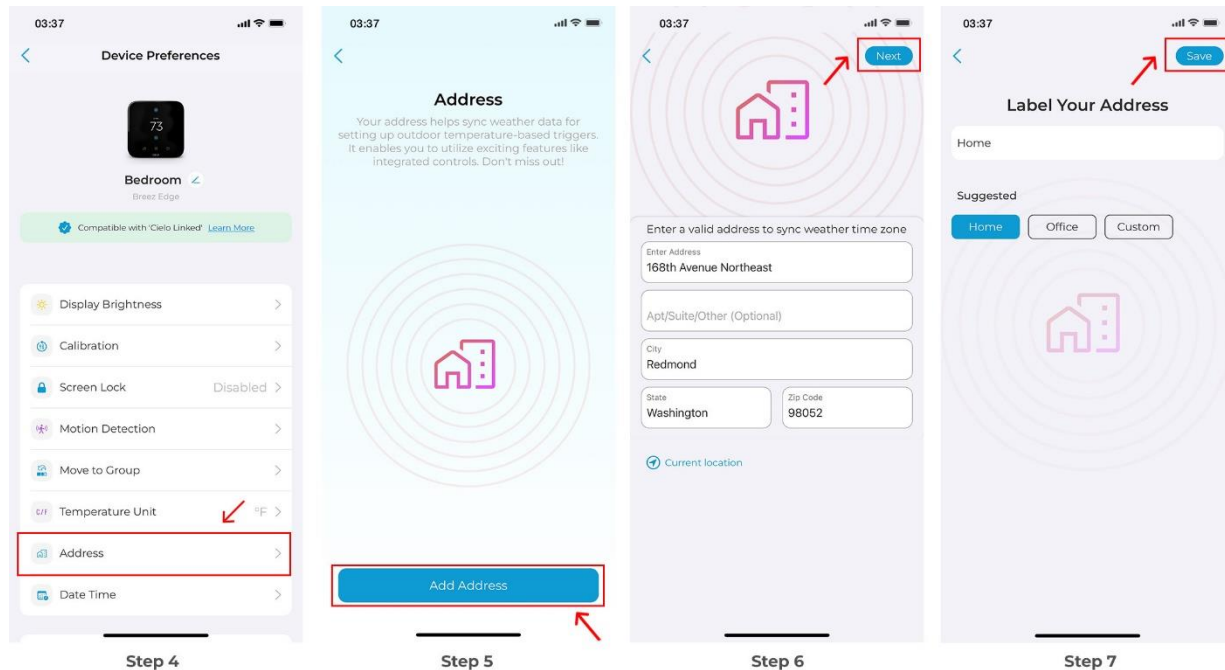


**Step 4:** Tap on 'Address'.

**Step 5:** Tap on 'Add Address'. Allow Cielo Home to access your location.

**Step 6:** Enter your address and tap on 'Next'.

**Step 7:** Add a label to your address, and tap on 'Save'.

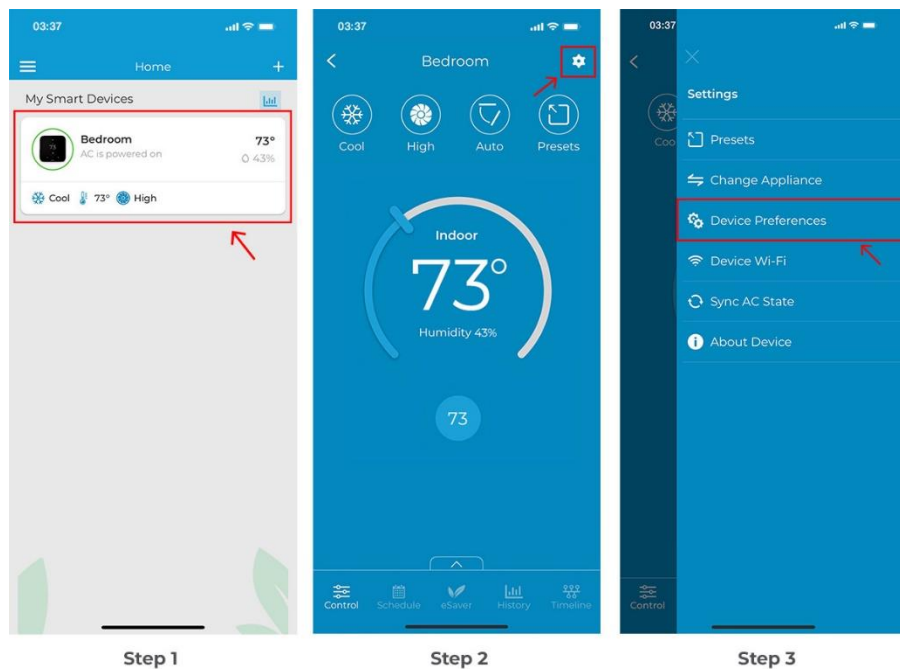


## Date & Time

**Step 1:** On the Home screen, tap on the Breez Edge on which you want to change the time format.

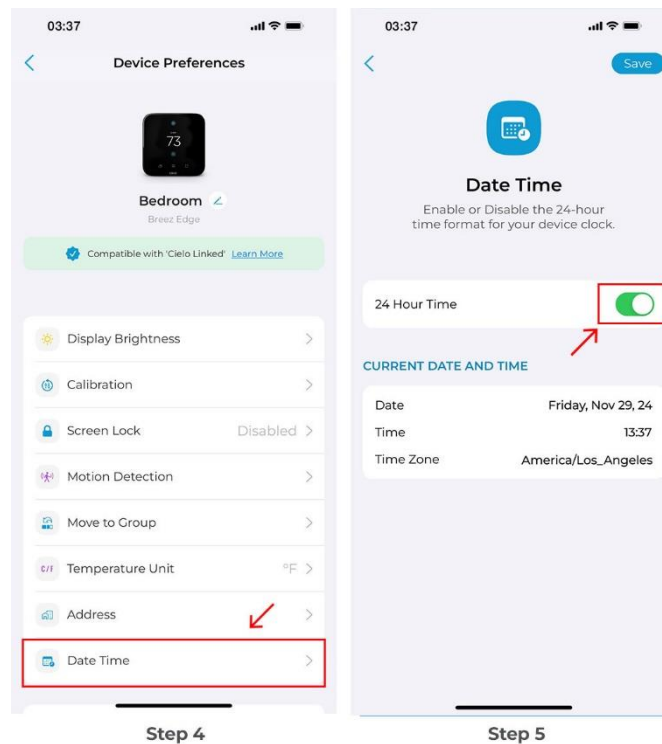
**Step 2:** Tap on the 'Settings' icon on the top right.

**Step 3:** Tap on 'Device Preferences'.



**Step 4:** Tap on Date & Time

**Step 5:** Toggle on/off the 24-hour clock, depending on your preference.

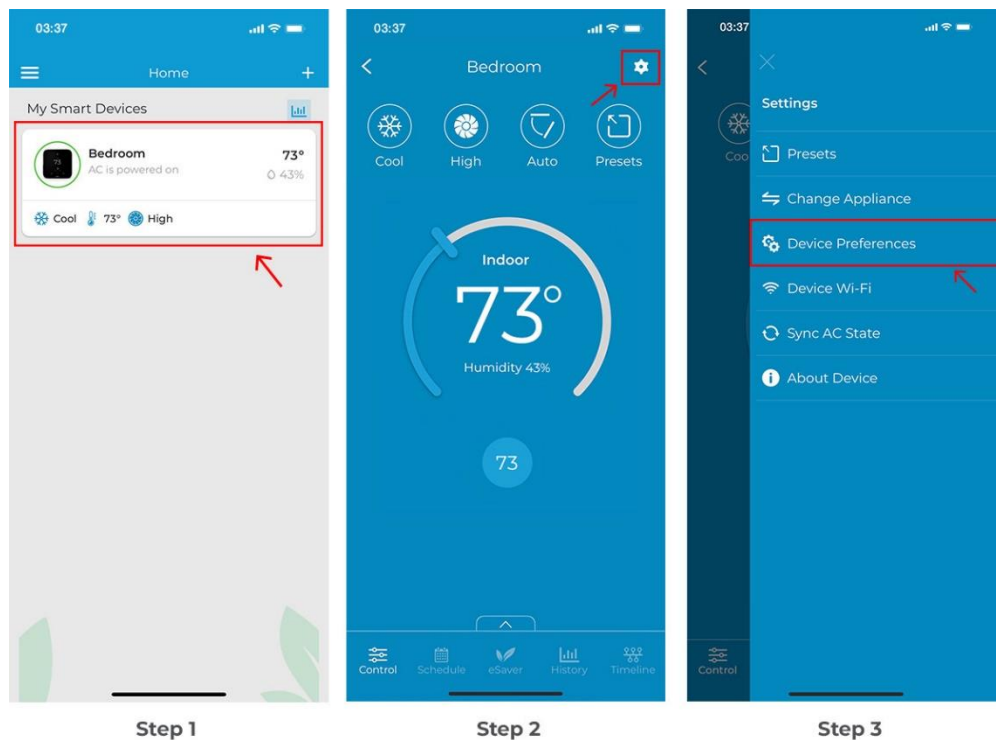


## Resetting or Removing your Device

**Step 1:** On the Home screen, tap on the Breez Edge you want to reset or remove.

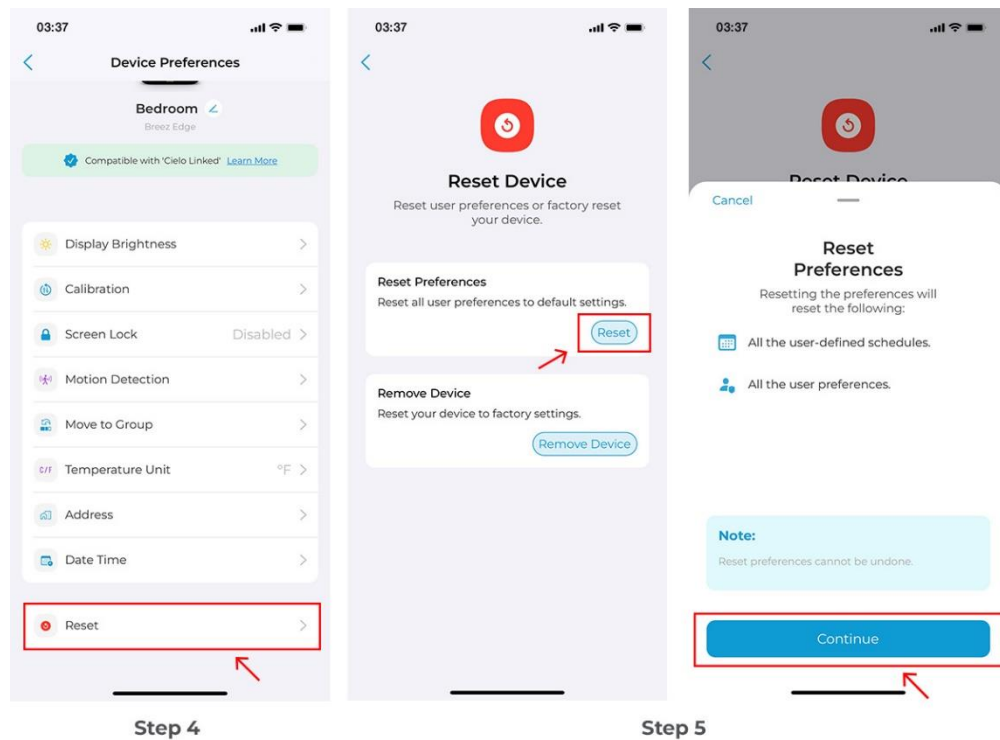
**Step 2:** Tap on the 'Settings' icon on the top right.

**Step 3:** Tap on 'Device Preferences'.

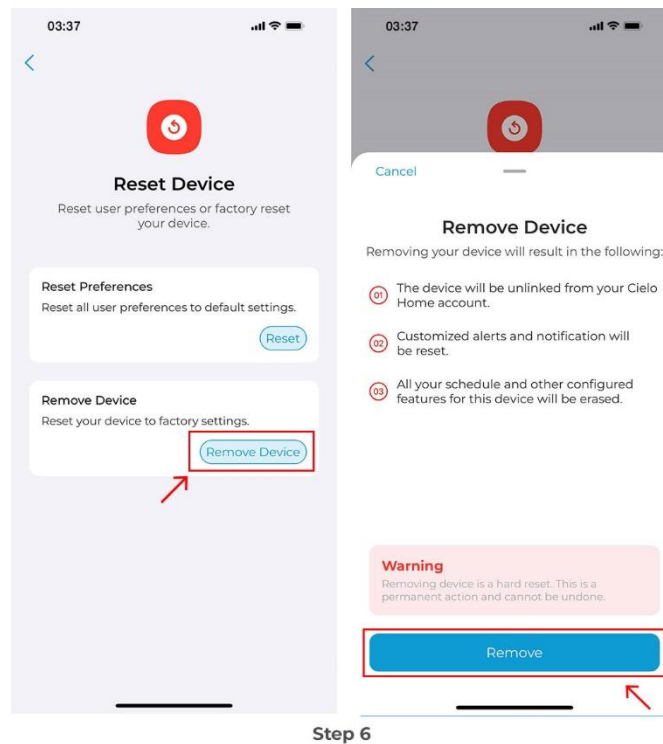


**Step 4:** Tap on Reset Device.

**Step 5:** If you want to reset all user preferences to default settings, tap on 'Reset'. Tap on 'Continue.'



**Step 6:** If you want to reset the device to factory settings, tap on 'Remove Device' then 'Remove.'

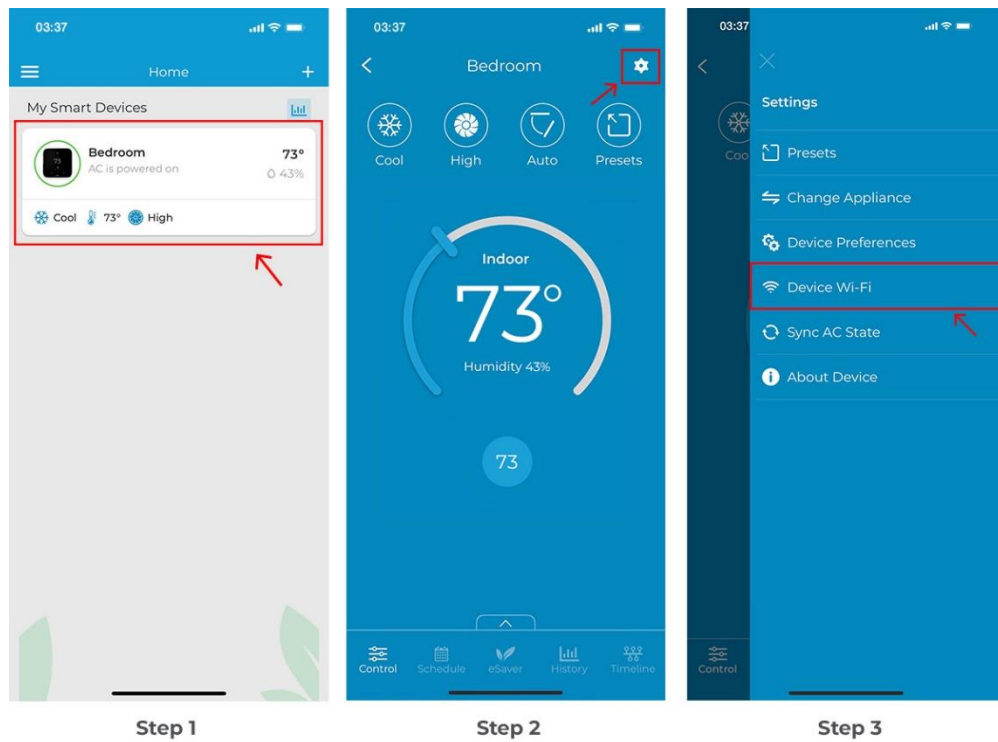


## Changing Wi-Fi

**Step 1:** On the Home screen, tap on the Breez Edge whose Wi-Fi you want to change.

**Step 2:** Tap on the 'Settings' icon on the top right.

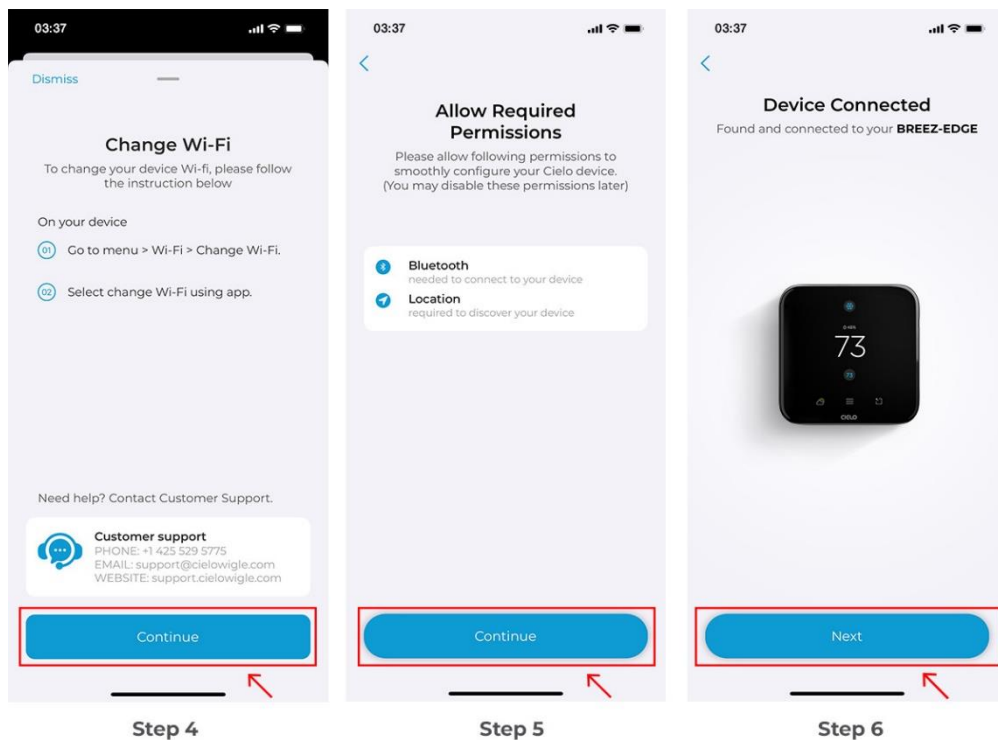
**Step 3:** Tap on 'Device Wi-Fi'.



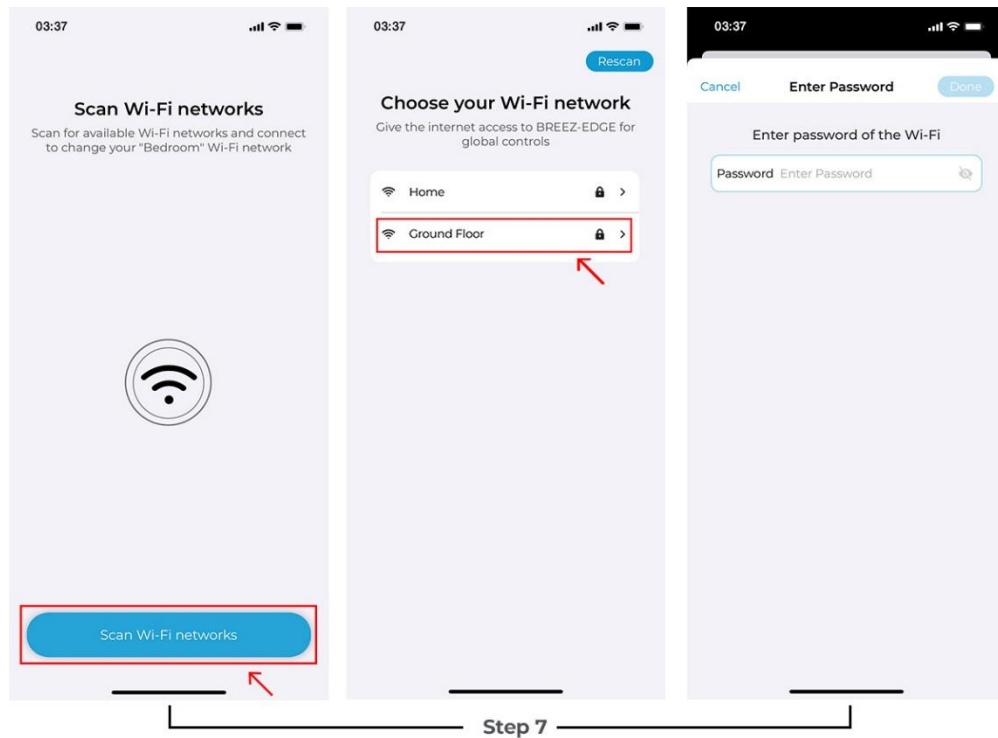
**Step 4:** Follow the instructions on the screen and tap on 'Continue'.

**Step 5:** Make sure your phone's Bluetooth and location is turned on. Tap 'Continue.'

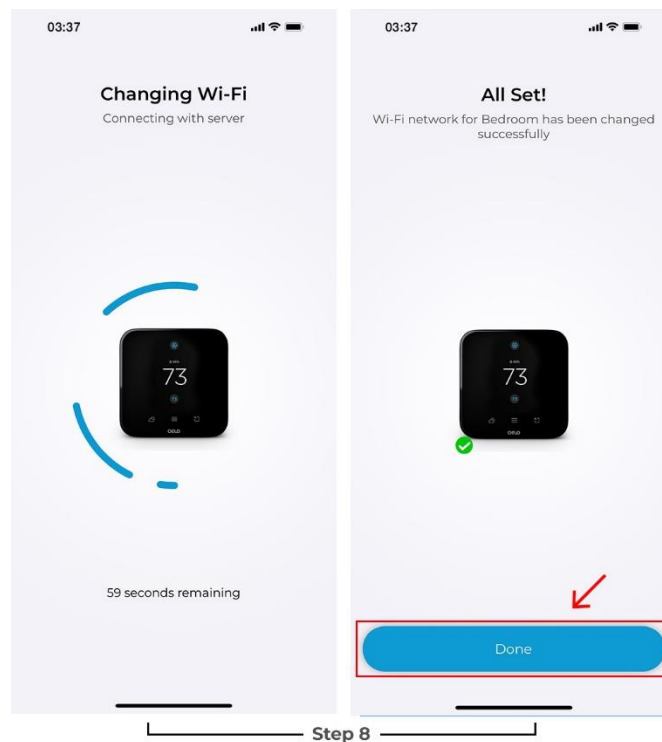
**Step 6:** You will be shown your connected device. Tap "Next".



**Step 7:** Tap 'Scan Wi-Fi Networks'. A list of available Wi-Fi networks will appear. Select your desired Wi-Fi network, and enter the password to connect.



**Step 8:** Your device Wi-Fi will be successfully changed. Tap on 'Done'.



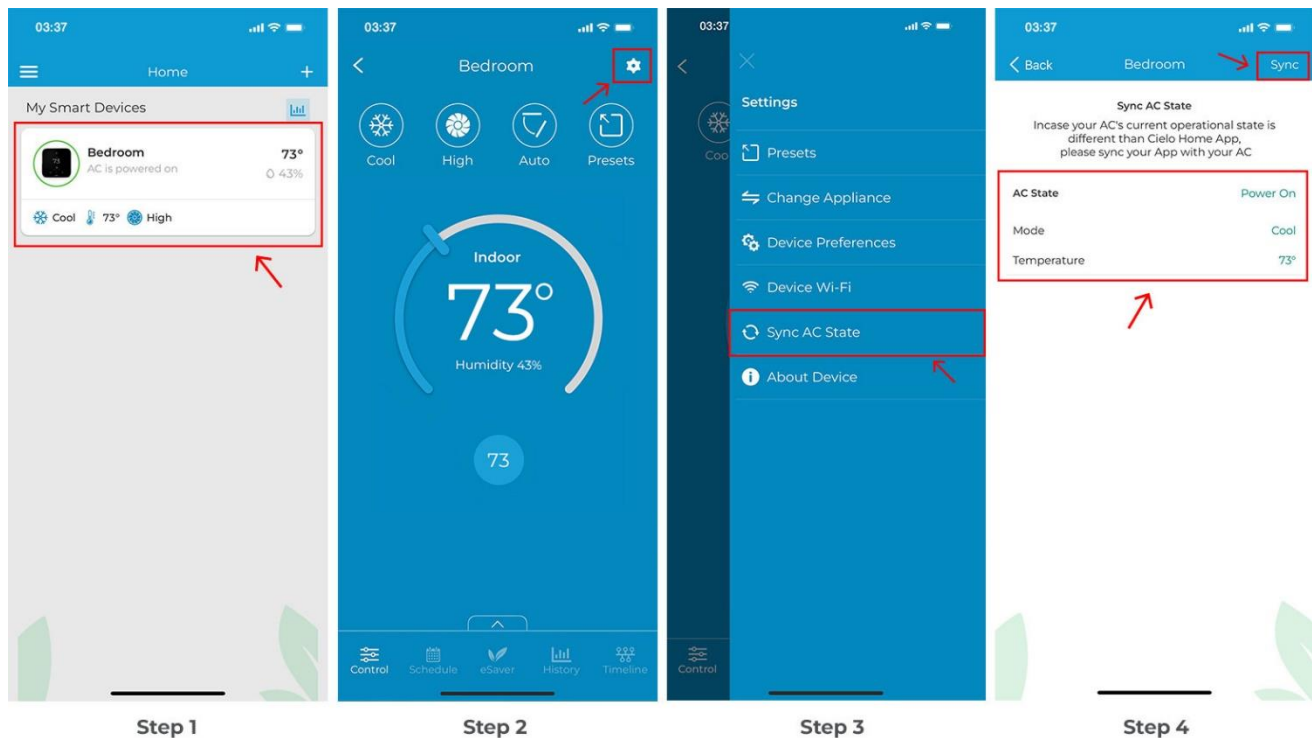
## Sync AC State (e.g. AC is ON and the App is showing it as OFF)

**Step 1:** On the Home screen, tap on the Breez Edge you want to sync with your mini-split.

**Step 2:** Tap on the 'Settings' icon on the top right.

**Step 3:** Tap on 'Sync AC State'.

**Step 4:** From the drop-down menus, select the AC parameters that you want on your Breez Edge device. Then tap on 'Sync'. The Breez Edge device will now display these selected parameter values.



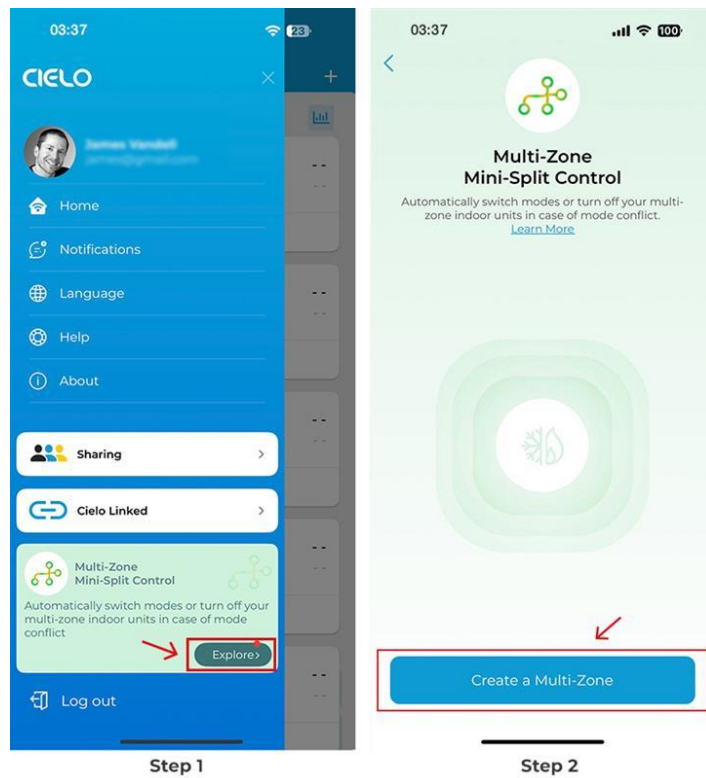
## Using Multi-Zone Mini-Split Control

A multi-zone mini-split system can only function in either cooling or heating mode at any given time, but not both simultaneously, as they have the same refrigerant flow. This limitation often leads to mode conflicts when one unit is set to heat while others are operating in cool mode or vice versa.

Cielo Breez Edge offers a unique feature to avoid mode conflict and ensure uninterrupted operation with a multi-zone system.

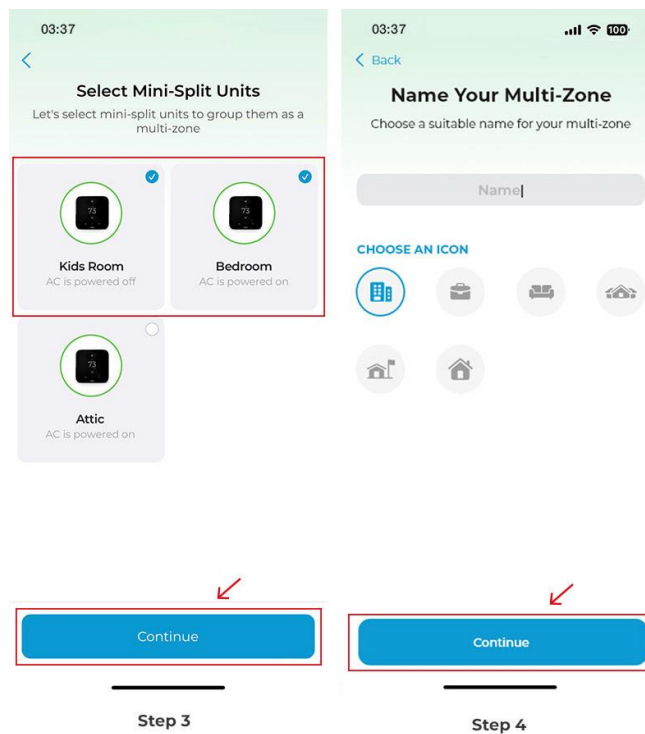
**Step 1:** Open 'Menu' from the Home screen and tap on 'Explore' under the Multi-Zone Mini-Split Control.

**Step 2:** Tap on 'Create a Multi-Zone'.



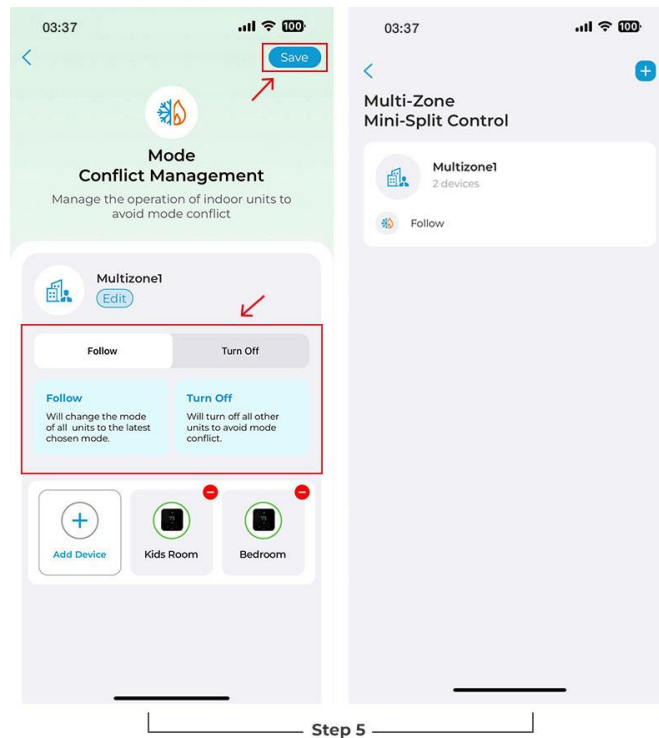
**Step 3:** Select the mini-splits that you want to group as a multi-zone. Tap on 'Continue'.

**Step 4:** Choose a name for your multi-zone. Also, select a suitable icon. Tap on 'Continue'.



**Step 5:** Select from the two options; 'Follow' or 'Turn Off'. Tap on 'Save'.

Your multi-zone mini-split control will be activated.



## Checking Details of Your Breez Edge

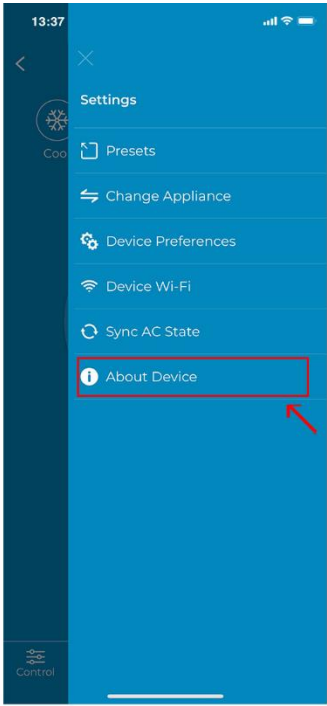
**Step 1:** Tap on the 'Settings' icon on the top right.

**Step 2:** Tap on 'About Device'.

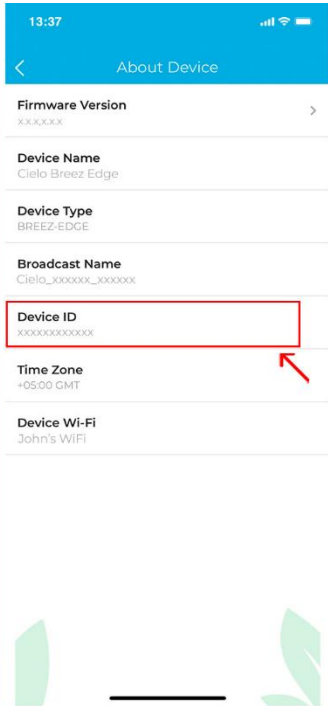
**Step 3:** You can see all the device details here.



Step 1



Step 2



Step 3